

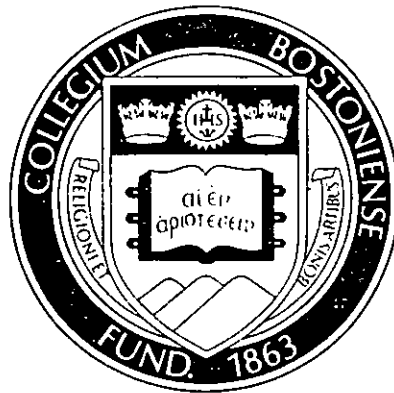
**BOSTON COLLEGE
FACT BOOK
1978**



BOSTON COLLEGE

FACT BOOK

1978





FOREWORD

The *Boston College Fact Book* is a compendium of significant statistics gathered from various sources throughout the University. It is truly a community effort to establish a single-source publication and reference document touching upon and integrating all aspects of the institution's people and its operations. Since it has been difficult to obtain information from all of our sources in the University on exactly the same basis, and for the same period of time, we have noted, where appropriate, the time frame referenced in the individual tables.

To maintain continuity and consistency with *Fact Book* statistics for prior years, most of the data in the new *Fact Book* reflect information gathered through June 30, 1978. Some information, however, is current for the Fall of 1978 and is so noted.

For future publication we shall strive to present a more up-to-date compilation so that future editions may become a reference for current materials as well as for historical data.

Cynthia Ross Lauer, Editor

Office of the Vice President
Financial and Business Affairs

October 19, 1978

**Boston College Fact Book
Table of Contents**

	Page
Foreword	i
Table of Contents	ii
Boston College Then and Now	v
Boston College Profile	vi
I. ADMINISTRATION AND FACULTY	
Chart of Administration	2
Board of Trustees	4
Officers of the University	5
Deans	5
University Administrators	5
Department Chairmen	7
Professional, Administrative and Support Staff Personnel	8
Faculty:	
- by School and Rank	8
- by School and Sex	9
- by School and Tenure Status	9
- by Highest Earned Degree and Rank	9
- by Highest Earned Degree and Sex	10
- by Rank and Sex	10
- Full-Time Equivalent by School	10
- Average Compensation by Rank	11
University Academic Senate:	
- Membership Classification	11
- Membership List — 1977-78	12
II. STUDENTS	
Freshman Applications and Enrollment (Full Time)	14
Freshman Applications and Enrollees: — Geographic Distribution, Class of 1982	14
SAT Averages by Class	15
Enrollment:	
- Undergraduate Transfer Students by Year and Sex	15
- Undergraduate Transfer Students by Type of Previous Institution	15
- Graduate and Undergraduate, Full and Part-Time	16
- Undergraduate, Day and Evening, and Graduate	16
- Undergraduate, by School	16
- Graduate, by School	16
- Graduate, by Degree Program and Discipline	17
- Undergraduate and Graduate, by Sex	18
- Full-Time Equivalent	18
- Evening College	19
- Summer Session	19
- Geographic Distribution of Students	20
- New International Students	21
- International Students by School and by Country	22
- Minority Enrollment	23
- Veterans	23
Undergraduate Degrees Conferred:	
- by Degree and Number of Majors	24
- by Major	25
- by School and by Major	26
- by Degree and by Sex	27

	Page
Undergraduate and Graduate Financial Aid	
- Number of Students	28
- Dollars	29
Health Services	30
III. ALUMNI	
Comparative Regional Analysis	32
Geographic Analysis by State	32
Boston College Alumni Clubs	33
Boston College Alumni Activities	33
New Heights Advancement Campaign Volunteer Leadership	34
IV. PHYSICAL PLANT	
Boston College Properties	36
Map - Chestnut Hill Campus	37
Map - Newton Campus	38
Buildings Related to Boston College Operation	39
Summary of Building Use	40
Dormitories	41
Classrooms	42
Dining Facilities	42
Offices	42
V. FINANCE	
Highlights of Financial Operations	45
Tuition and Fees - For the Seven Years Ended June 30, 1979	46
Tuition Restated in 1967 Dollars	47
Contracts and Grants, Source and Application	47
Contract and Grant Awards 7/1/77 - 6/30/78	48
VI. LIBRARIES	
Libraries	50
Expenditures for Books	50
Holdings by Individual Libraries	50
Volume Acquisitions	51
Circulation Statistics	51
Audio-Visual Service Statistics	51
Special Collections	52
Computer Searches	53
Special Library Services	54
VII. ATHLETICS	
Sports at Boston College	57
Varsity Sports Records	58
Varsity Football Schedules - 1978-1981	58
Varsity Hockey Schedule - 1978-79	59
Varsity Basketball Schedule - 1978-79	59
Community Use of Recreational Facilities	60
VIII. GENERAL INFORMATION	
Types of Degrees Conferred	62
Accrediting Agencies and Association Memberships	62
Founder and Presidents	63
Honorary Degrees Awarded	63
Academic Department Locations	66
Sources and Bibliography	67
Academic Calendar	68



The original arrangement of the buildings at the Old Boston College.
Photographed sometime before 1875 by Oliver Wendell Holmes.

BOSTON COLLEGE

Then And Now . . .

Boston College was founded by the Society of Jesus in 1863, and is one of twenty-eight Jesuit colleges and universities in the United States. With three teachers and twenty-two students, the school opened its doors on September 5, 1864. While it remained a small liberal arts college, the faculty was predominantly Jesuit, but today's full-time faculty is comprised of over 500 lay men and women, and 100 Jesuits. There are upwards of 60,000 alumni scattered from Beacon Hill to American Samoa.

Originally located on Harrison Avenue in the South End of Boston, where it shared quarters with the Boston College High School, the College outgrew its urban setting toward the end of its first fifty years. A new location was selected in Chestnut Hill, then almost rural, and four parcels of land were acquired in 1907. A design competition for the development of the campus was won by the firm of Maginnis and Walsh, and ground was broken on June 19, 1909, for the construction of Gasson Hall. It is located on the site of the Lawrence farm house, in the center of the original tract of land purchased by Father Gasson, and is built largely of stone taken from a quarry which occupied part of the sites of Devlin, Higgins, and Cushing Halls. The foundations were blasted out of solid ledge. Because of its historic value, Gasson was completely restored in 1976 in order to preserve its familiar Gothic spires for future generations of students and alumni.

Later purchases doubled the size of the property, with the addition of the upper campus in 1941, and the lower campus with the purchase of the Lawrence Basin and adjoining land in 1949. In 1974 Boston College acquired Newton College of the Sacred Heart, a mile-and-a-half from the main campus. With fifteen handsome Georgian buildings standing in a park-like estate of forty acres, it is now the site of the Boston College Law School, as well as several academic departments, and dormitories housing over 700 freshmen and sophomores.

Though incorporated as a University since its beginning, it was not until its second half-century that Boston College began to fill out the dimensions of its University charter. The Summer Session was inaugurated in 1924; the Graduate School of Arts and Sciences in 1925; the Law School 1929; the Evening College, 1929; the Graduate School of Social Work, 1936; the School of Management, 1938; the School of Nursing, 1947; and the School of Education in 1952.

Weston Observatory, founded in 1928, was accepted as a Department of Boston College in 1947, offering courses in geophysics and geology to graduate students. The main concerns of the Observatory are recording and locating earthquakes, research in the earth's magnetic field, and the study of the earth's crust in the Boston area. The facilities include an Earth Science Library, seismic vault, and magnetic observation complex.

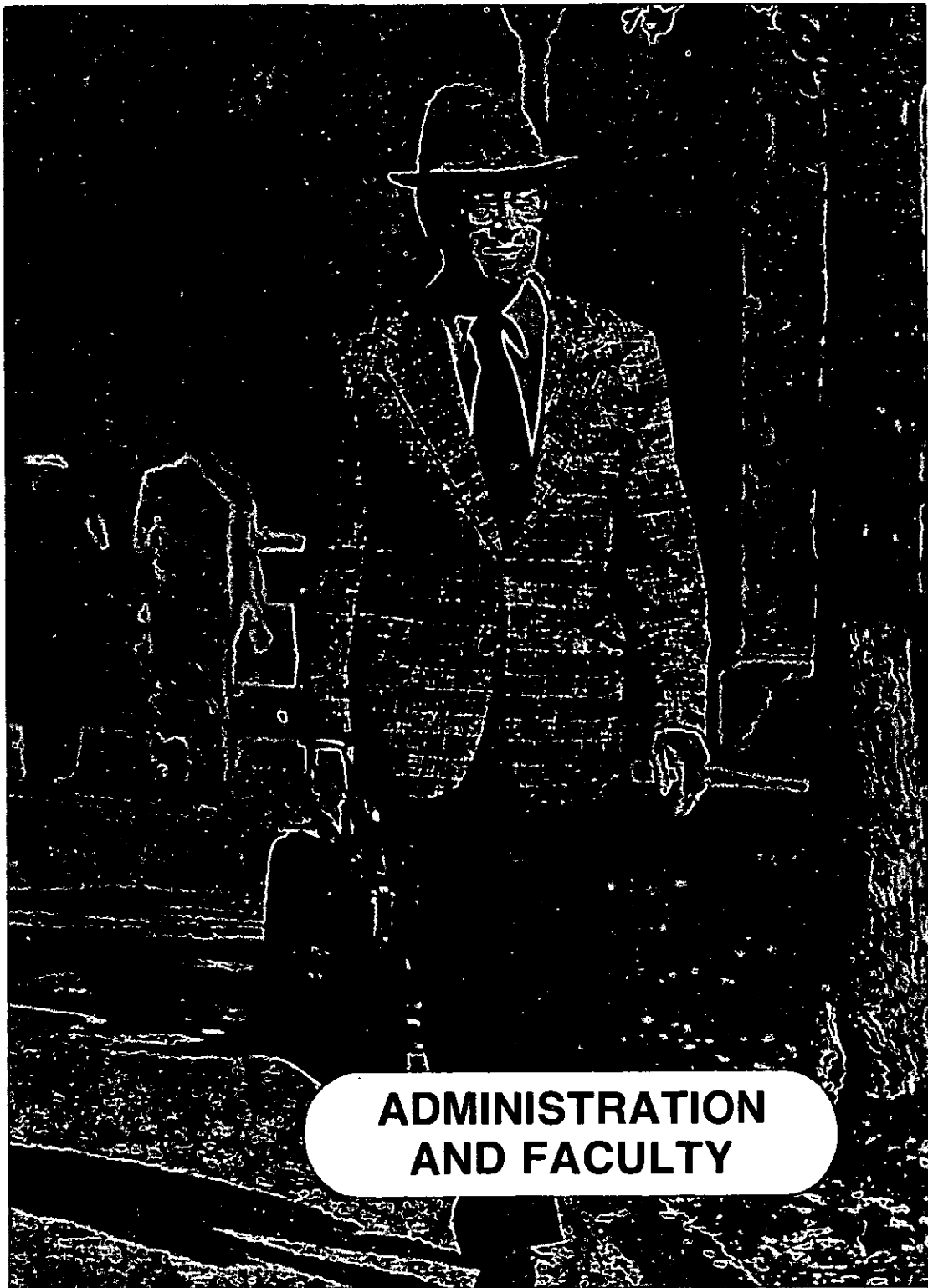
In 1929 Boston College conferred one earned bachelor's degree and fourteen master's degrees on fifteen teaching sisters through the Extension Division that was the precursor of the Graduate School of Arts and Sciences, the Evening College, and the Summer Session. Today, women students comprise at least 50% of the University's enrollment, and 25% of the total alumni.

In 1976 Boston College was accredited by, or a member of, twenty-three professional organizations and accrediting agencies. It is now the fourth largest private university in New England, with full- and part-time enrollment over 13,000, and consists of eleven schools, colleges, and institutes offering fourteen degree programs and one certification program.

-Excerpted from "A Guide to the Campus," 1976

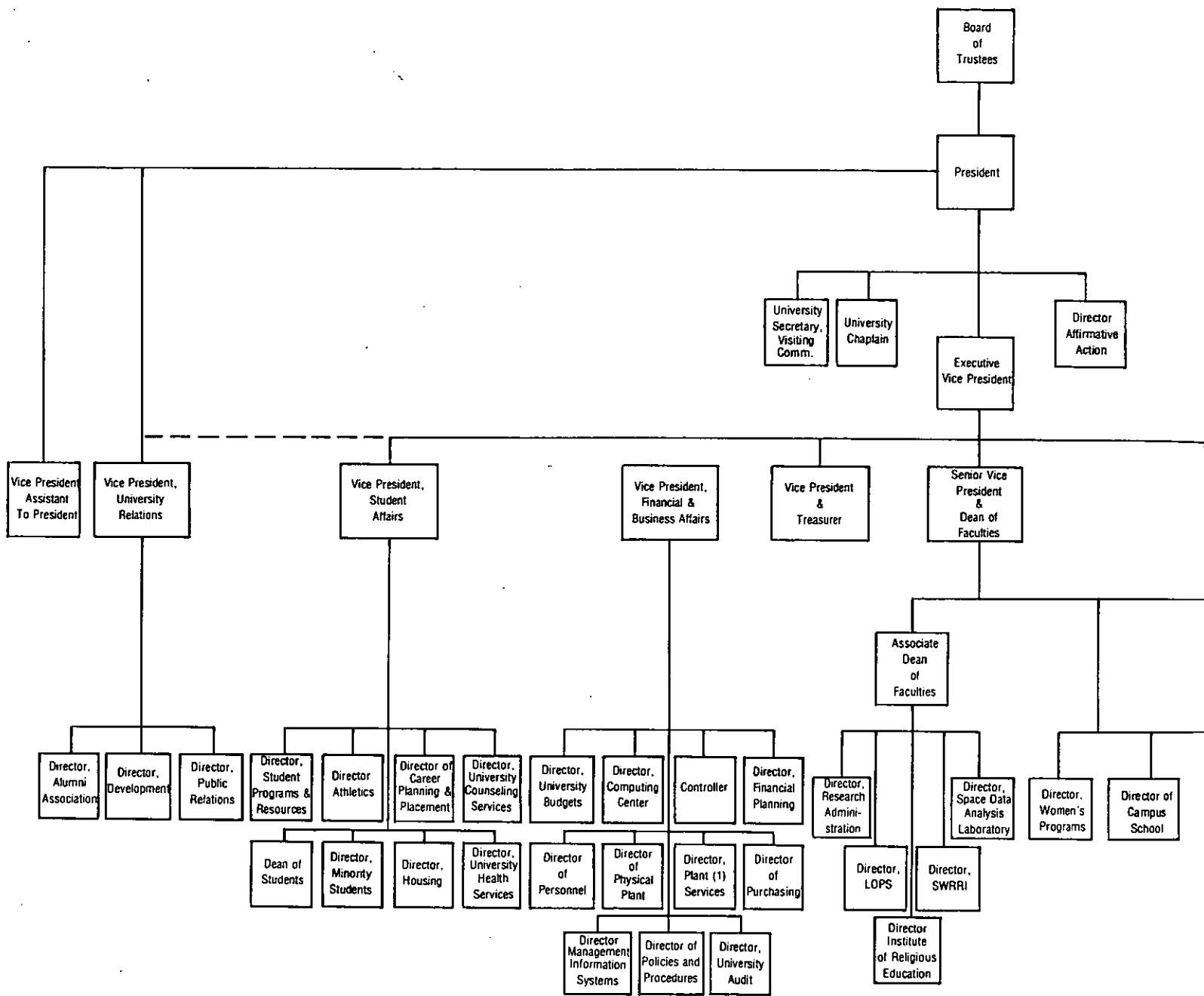
Boston College Profile

	1977-78
ADMISSIONS	
Applicants (Fall '77)	11,336
Registrants (Fall '77)	
Men	1,028
Women	1,177
Total Freshman Class	2,205
ENROLLMENT - (Full and Part-Time)	
Undergraduate (Fall '77)	10,287
Graduate (Fall '77)	3,681
	13,968
PERSONNEL	
Full-Time Faculty	542
Part-Time Faculty	294
Teaching Fellows	118
Graduate Assistants	244
Total Administrative/Professional Staff & Sponsored Research (Aug. '78)	527
Total Secretarial/Clerical & Sponsored Research (Aug. '78)	444
Total Physical Plant Positions (Aug. '78)	208
General Service (Aug. '78)	191
	2,568
DEGREES CONFERRED	
Undergraduate (May '78)	2,163
Graduate & Professional (May '78)	1,074
	3,237
ALUMNI (May '77)	64,509
LIBRARIES - (total holdings) - volumes	971,605
PHYSICAL PLANT	
Acres: (owned properties)	
Chestnut Hill Campus	110.6
Newton Campus	40.2
Other	9.77
	160.57
Buildings: (utilized properties)	
Administrative/Academic	28
Student Housing	31
Other	21
	80
FINANCE (FY '78)	
Revenues	\$64,212,000
Expenditures & Transfers	\$63,821,000



**ADMINISTRATION
AND FACULTY**

November 1977 — professor in quadrangle.



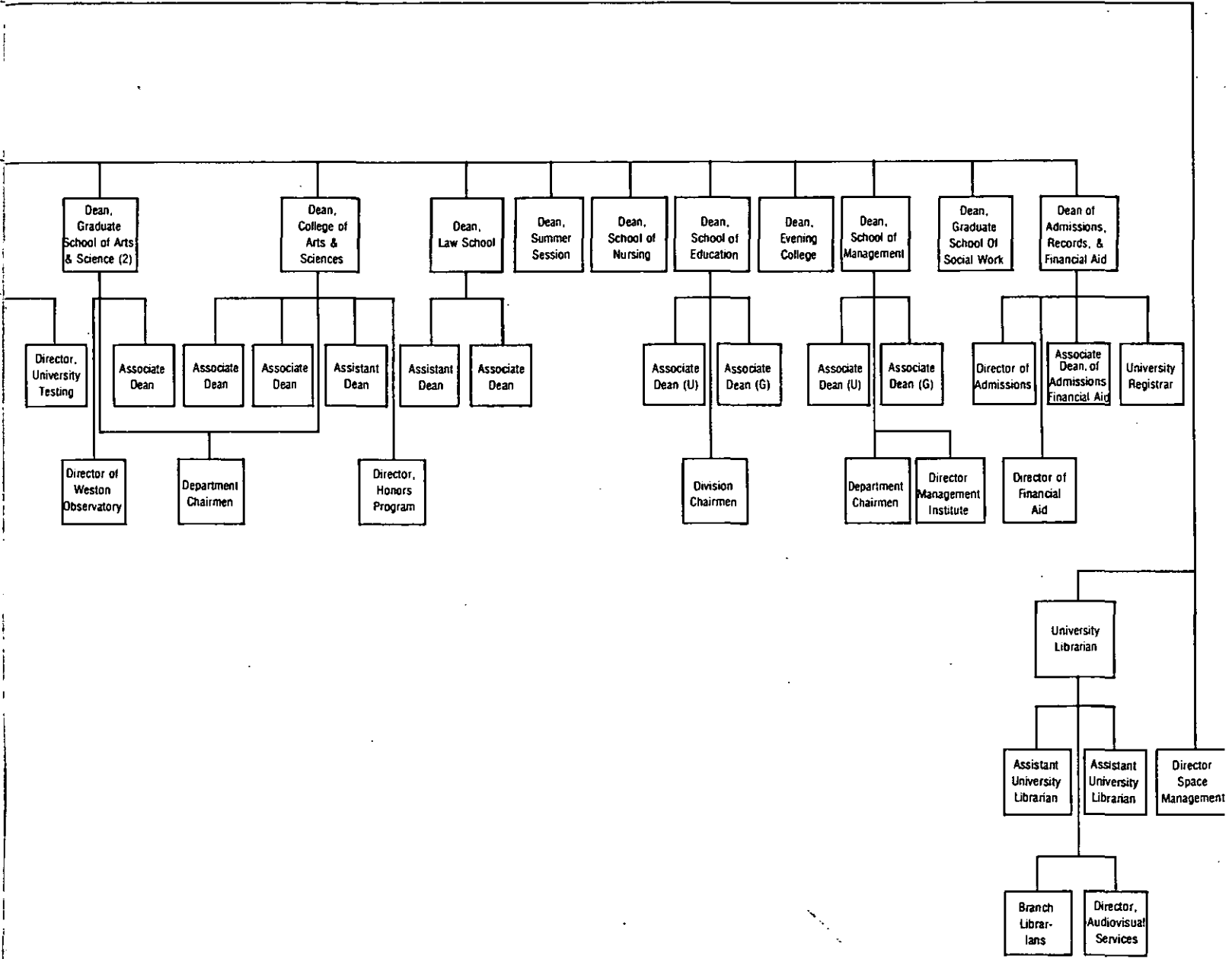
- (1) Plant Services:
 Bookstore
 Food Service
 Housekeeping
 Campus Police
 Telecommunications
 Mail
 Bureau of Conferences

- (2) Includes Graduate Program in Education and Nursing

Source: Personnel Office

BOSTON COLLEGE

CHART OF ADMINISTRATION, JANUARY 1978



**Board of Trustees
1977-78**

- Joseph F. Abely, Jr., '50
*Executive Vice President
R.J. Reynolds Industries, Inc.*
- William L. Brown
*President and Director,
First National Bank of Boston*
- James F. Cleary, '50
*Vice President of the Board
Blyth Eastman Dillon & Co., Inc.*
- William F. Connell, '59*
*Chairman of the Board and President,
Ogden Food Service Corporation*
- Joseph F. Cotter, '49*
*Senior Vice President and Controller,
The Sheraton Corporation*
- George L. Drury, S.J., '45, M.A. '46, M.S. '49
*Director,
Campion Residence and Renewal Center*
- Joseph R. Fahey, S.J., '60, M.A. '61
Academic Dean, College of the Holy Cross
- John T. Fallon
President, R.M. Bradley, Inc.
- Stephen E. Fix, '74
Ph.D. Candidate, Cornell University
- Diane J. Forte, '77
Graduate Student, Purdue University
- Thomas J. Galligan, Jr., '41, D.B.A. '75 (Hon.)*
*President,
Boston Edison Company*
- Thomas J. Gibbons, S.J., '53, M.A. '54, S.T.L. '61
*Principal,
Boston College High School*
- Avram J. Goldberg
President, The Stop and Shop Companies, Inc.
- Patricia A. Goler, M.A. '51, Ph.D. '57
*Dean, The College of Liberal Arts,
University of Lowell*
- Anne P. Jones, B.S. '58, J.D. '61
*General Counsel
Federal Home Loan Corporation*
- The Honorable Edward M. Kennedy, LL.D. '66
(Hon.)
United States Senator
- Mary M. Lai
Treasurer, Long Island University
- John Lowell*
Partner, Welch & Forbes
- Joseph F. MacDonnell, S.J., '52, M.A. '59
*Associate Professor of Mathematics
Fairfield University*
- Francis C. Mackin, S.J., M.A. '51
Provost, Fordham University at Lincoln Center
- Joseph E. McCormick, S.J., M.A. '46
*Director for Vocations
Campion Residence and Renewal Center*
- Robert A. Mitchell, S.J.
Director, Woodstock Theological Center
- J. Donald Monan, S.J.*
President, Boston College
- Giles E. Mosher, Jr., '55
*Chairman of the Board, Baybank/
Newton-Waltham Trust Company*
- The Honorable David S. Nelson, '57, J.D. '60
Magistrate, Superior Court of Massachusetts
- William J. O'Halloran, S.J., '51, M.A. '52*
President, Le Moyne College
- Joseph A. O'Hare, S.J.
Editor in Chief, America Magazine
- Robert J. O'Keefe, '51
Senior Vice President, Chase Manhattan Bank
- James P. O'Neill, '42*
Executive Vice President, Xerox Corporation
- The Honorable Thomas P. O'Neill, Jr., '36,
LL.D. '73 (Hon.)
*Speaker of the House of Representatives,
United States Congress*
- Cornelius W. Owens, '36, LL.D. '68, (Hon.)*
*Executive Vice President (retired), American
Telephone and Telegraph Company*
- John W. Padberg, S.J.
President, Weston School of Theology
- Daniel J. Shine, S.J., '44, M.A. '45
Rector of the Jesuit Community, Boston College
- Helen M. Stanton, M.S.W. '43
*Co-Chairman
Boston College Parents' Committee*
- Sandra J. Thomson, M.D., '58 (Newton College)
*Department of Orthopaedic Surgery
Children's Hospital Medical Center*
- Michael P. Walsh, S.J.*, '34, M.A. '35, L.H.D. '75
(Hon.)
*Chairman of the Board
Boston College High School*
- Vincent C. Ziegler, D.B.A. '75 (Hon.)
*Chairman of the Executive Committee and
Director, The Gillette Company, Inc.*

*Executive Committee member

Source: President's Office

Officers of the University

Fall 1978

President
Executive Vice President
Senior Vice President and Dean of Faculties
Vice President of Student Affairs
Vice President, Assistant to the President
Secretary of the University
Vice President and Treasurer
Vice President for University Relations
Vice President, Financial and Business Affairs

J. Donald Monan, S.J.
Francis B. Campanella
Charles F. Donovan, S.J.
Kevin P. Duffy
Margaret A. Dwyer
Paul A. FitzGerald, S.J.
Thomas Fleming, S.J.
James P. McIntyre
John R. Smith

Deans

Fall 1978

Mary A. Dineen
George Fuir, S.J.
Mary D. Griffin (Acting)
Edward J. Hanrahan, S.J.
June G. Hopps
Richard G. Huber
John J. Maguire

John J. Neuhauser
Thomas P. O'Malley, S.J.
Donald J. White
James A. Woods, S.J.

The School of Nursing
The Summer Session
The School of Education
Dean of Students
The Graduate School of Social Work
The Law School
Dean of Admissions, Records
and Financial Aid
The School of Management
The College of Arts and Sciences
The Graduate School of Arts and Sciences
Evening College of Arts, Sciences
and Business Administration

University Administrators

Fall 1978

John D. Beckwith
Director of Purchasing

Barry A. Bluestone
Director, Social Welfare Regional
Research Institute

James L. Bowditch
Acting Associate Dean, Graduate Program,
The School of Management

Catherine H. Briel
Controller

John M. Callahan
Director of Dining Services

J. Stephen Collins
Director of Financial Aid

Richard E. Collins
Director of Housing

Susan Coté
Assistant University Librarian

Justin C. Cronin
Associate Dean, The School of Management

James J. Daley
Director, University Safety, Security,
and Telecommunications

Margaret Dever
Director of Women's Programs
in Continuing Education

John Dunnet
Director of Internal Audit

John G. Durkin
Bookstore Manager

John R. Eichorn
Director, Campus School

John M. Flackett
Associate Dean, The Law School

Charles Flaherty
Director of Research Administration

William J. Flynn
Director of Athletics

Albert M. Folkard
Director, Honors Program, College of
Arts & Sciences

Marc A. Fried
Director, Laboratory of Psychosocial Studies

David J. Gill, S.J.
University Chaplain

Bernard W. Gleason, Jr.
Director, Management Information Systems

William T. Griffith
University Registrar

John L. Harrison
*Associate Dean, College of Arts
and Sciences*

Alice Jeghelian
Director, Affirmative Action

Weston M. Jenks, Jr.,
Director, University Counseling Services

James P. Kennedy
Director, University Budgets

Lorraine Kinnane
Director, University Testing

Joseph F. MacSweeney
Director, Plant Services

Arnold F. Mazur, M.D.
Director, Health Services

Rev. Richard P. McBrien
Director, Institute of Religious Education

F. Clifford McElroy
Chief Science Librarian

Marie M. McHugh
*Assistant Dean, The College of Arts
and Sciences*

John McKiernan
Director, Management Institute

Henry J. McMahon
*Associate Dean, The College Arts
and Sciences*

Edward D. Miller
Director, Public Relations

Francis F. Mills
Director, Financial Planning

Fred B. Mills, Jr.
*Director, University Policies
and Procedures*

Stephen G. Morrison
Chief Law Librarian

Russell G. Murphy
Assistant Dean, The Law School

Harriet J. Nemiccolo
Chief Social Work Librarian

Thomas F. O'Connell
University Librarian

Neil O'Keefe, S.J.
University Archivist

Mary L. Pekarski
Assistant University Librarian

Alfred G. Pennino
Director, Buildings and Grounds

Leo F. Power, Jr.
Director, Space Data Analysis Laboratory

Fred J. Pula
Director, University Audio-Visual Services

James J. Scannell
Director, Admissions

James W. Skehan, S.J.
Director, Weston Observatory

John D.J. Slinn
Bapst Librarian

Edward B. Smith
Associate Dean, The School of Education

John E. Steele
Director, Career Planning and Placement

Leo V. Sullivan
Director, Personnel

Roderick G. Wallick
*Assistant to the Executive Vice President
and Director, Space Management*

Edmond D. Walsh, S.J.
Associate Dean, Freshmen Financial Aid

Carole L. Wegman
Director, Student Programs & Resources

John F. Wissler
Executive Director, Alumni Association

Department Chairmen

Fall 1978

Accounting	Frederick J. Zappala
Administrative Sciences	Walter H. Klein
Biology	Donald J. Plocke, S.J.
Chemistry	Jeong-Long Lin
Classical Studies	Eugene W. Bushala
Computer Sciences	C. Peter Olivieri
Economics	Richard W. Tresch
English	Robert E. Reiter
Finance	Walter T. Greaney
Fine Arts	Marianne W. Martin
Geology and Geophysics	George D. Brown
Germanic Studies	Christoph Eykman
History	Andrew Buni
Law	William B. Hickey
Marketing	Michael P. Peters
Mathematics	Rose R. Carroll
Philosophy	Joseph F.X. Flanagan, S.J.
Physics	Robert L. Carovillano
Political Science	David Manwaring
Psychology	Peter O. Gray
Romance Languages and Literatures	Betty Rahv
Slavic and Eastern Languages	Michael J. Connolly
Sociology	Lynda Holmstrom
Speech Communication and Theater	John H. Lawton
Theology	Robert J. Daly, S.J.

Professional, Administrative and Support Staff Personnel as of August 1978*

	Full-Time				Open Pos.	Total Pos.	Part-Time			
	Men	Women					Men	Women	Open Pos.	Total Pos.
Administrative/Professional										
Dean of Faculties	44	37	5	86			17	4	2	109
Business/Finance	71	19	1	91			1	—	—	92
Student Affairs	39	34	2	75			32	11	2	120
University Relations	18	8	1	27			3	2	—	32
President's Office	4	3	—	6			—	—	—	6
Executive Vice President	2	1	—	3			—	—	—	3
Libraries	15	18	3	36			—	1	—	37
Subtotal Administrative/Professional	193	120	12	325			53	18	4	400
Sponsored Research	52	13	—	65			30	31	1	127
Total Administrative/Professional and Sponsored Research	245	133	12	390			83	49	5	527
Secretarial/Clerical										
Libraries	21	246	25	292			11	43	14	360
	19	35	6	60			2	6	2	70
Subtotal Secretarial/Clerical	40	281	31	352			13	49	16	430
Sponsored Research	1	8	—	9			1	4	—	14
Total Secretarial/Clerical and Sponsored Research	41	289	31	361			14	53	16	444
Physical Plant Personnel										
Buildings and Grounds	36	—	4	40			—	—	—	40
Tradespeople	35	—	—	35			—	—	—	35
Leadpeople	5	—	—	5			—	—	—	5
Housekeeping	88	14	—	102			—	—	—	102
Mailroom	8	3	—	11			—	2	—	13
Switchboard	4	4	—	8			1	4	—	13
Total Physical Plant	176	21	4	201			1	6	—	208
Campus Police										
Dining Department	32	2	1	35			—	—	—	35
General Service	61	22	16	99			2	10	3	114
Gen. Ser. Spon. Research	17	2	—	19			10	2	1	32
	6	4	—	10			—	—	—	10
Total General Service	116	30	17	163			12	12	4	191
TOTAL POSITIONS	578	473	64	1115			110	120	25	1370

* The totals represent all of the authorized and budgeted positions for the above classifications as of August 1978. The statistics in this new array are not comparable to those reported in prior years.

Source: Personnel Office

FACULTY

Faculty by School and Rank 1977-78

School	Professor		Associate		Assistant		Instructor		Total	
	No.	%	No.	%	No.	%	No.	%	No.	%
A & S	74	23	114	35	112	34	28	8	328	61
Education	14	25	15	27	18	32	9	16	56	10
Management	11	19	26	45	15	26	6	10	58	11
Nursing	1	2	18	32	20	34	18	32	57	10
Law	17	71	2	8	2	8	3	13	24	4
Social Work	2	10	11	58	6	32	—	—	19	4
Total*	119	22	186	34	173	32	64	12	542	100

*Excluding part-time lecturers, special contracts, and academic Administrators.

Source: Office of the Dean of Faculties

**Faculty by School and Sex
1977-78**

School	Women		Men		Total	
	No.	%	No.	%	No.	%
Arts & Sciences	48	36	280	69	328	60
Education*	15	11	41	10	56	10
Management	2	2	56	14	58	11
Nursing*	57	42	0	0	57	10
Law	4	3	20	5	24	5
Social Work	9	6	10	2	19	4
Total**	135	25	407	75	542	100

Source: Office of Dean of Faculties

**Faculty by School and Tenure Status
1977-78**

School	Tenured		Non-Tenured		Total	
	No.	%	No.	%	No.	%
Arts & Sciences	216	66	112	34	328	60
Education*	30	54	26	46	56	10
Management	34	59	24	41	58	11
Nursing*	20	35	37	65	57	10
Law	18	75	6	25	24	5
Social Work	13	68	6	32	19	4
Total**	331	61	211	39	542	100

*Graduate faculty in the departments of Education and Nursing of the Graduate School of Arts and Sciences are included in these tables, with their respective undergraduate schools.

**Totals in distribution do not include part-time staff or academic administrators

Source: Office of Dean of Faculties

**Faculty by Highest Earned Degree and Rank
1977-78**

Degree	Professor		Associate		Assistant		Instructor		Total	
	No.	%	No.	%	No.	%	No.	%	No.	%
Doctorate	109	20	168	31	118	22	—	—	395	73
Masters	2	—	14	2	44	8	59	11	119	22
First Professional*	8	2	4	1	11	2	5	1	28	5
Total**	119	22	186	35	173	32	64	12	542	100

*Including LLB, JD, STB, PhL, and STL.

**Excluding part-time lecturers, special contracts and academic administrators.

Source: Office of the Dean of Faculties

**Faculty by Highest Earned Degree and Sex
1977-78**

Degree	Women		Men		Total	
	No.	%	No.	%	No.	%
Doctorate	73	54	319	78	392	72
Masters	59	44	60	15	119	22
First Professional*	3	2	28	7	31	6
Totals**	<u>135</u>	<u>100</u>	<u>407</u>	<u>100</u>	<u>542</u>	<u>100</u>

*Including LLB, JD, PhL, and STL.

**Excluding part-time lecturers, special contracts and academic administrators

Source: Office of the Dean of Faculties

**Faculty by Rank and Sex
1977-78**

Rank	Women		Men		Total	
	No.	%	No.	%	No.	%
Professor	10	7	109	27	119	22
Associate	40	30	146	36	186	34
Assistant	58	43	115	28	173	32
Instructor	<u>27</u>	<u>20</u>	<u>37</u>	<u>9</u>	<u>64</u>	<u>12</u>
Total*	<u>135</u>	<u>100</u>	<u>407</u>	<u>100</u>	<u>542</u>	<u>100</u>

*Excluding special contracts and academic administrators.

Source: Office of the Dean of Faculties

**Full-Time Equivalent Faculty by School
1977-78**

School	Full Time	FTE of Part Time	Total FTE Faculty
Arts and Sciences	328	80	408
Education*	56	15	71
Management	58	14	72
Nursing*	57	10	67
Law	24	7	31
Social Work	<u>19</u>	<u>6</u>	<u>25</u>
Total**	<u>542</u>	<u>132</u>	<u>674</u>

*Graduate faculty of the Departments of Education and Nursing of the Graduate School of Arts and Sciences are included in this table with their respective schools.

**Does not include full-time academic administrators and full-time academic directors, nor teaching fellows.

Source: Office of the Dean of Faculties

**Average Compensation by Rank
AAUP Category I
(9-month equivalent)
1977-78**

Rank	Boston College	All Combined Category	Church-Related
Professor	\$ 31,500	\$ 30,950	\$ 28,500
Associate	24,500	22,830	22,260
Assistant	19,700	18,610	18,300
Instructor	16,500	14,860	14,450

Source: Office of Dean of Faculties; AAUP Bulletin, Table 3, September 1978

**UNIVERSITY ACADEMIC SENATE
Membership Classification
1977-78**

Classification	Total
Faculty	
Arts & Sciences	9
Education	1
Management	2
Nursing	2
Law	1
Social Work	1
	16
Administration	10
Undergraduate Students	
Arts & Sciences	5
Education	1
Management	1
Nursing	1
Evening College	1
	9
Graduate Students	1
Total	36

Source: Corresponding Secretary, University Academic Senate

University Academic Senate

Membership List 1977-1978

ELECTED FACULTY SENATORS

College of Arts and Sciences

Rev. Joseph A. Appleyard, S.J. — English
Prof. Lynne Ballew — Philosophy
Rev. Edward Callahan, S.J. — Theology
Rev. David F. Carroll, S.J. — Theology
Rev. Robert Cheney, S.J. — Economics
Prof. J. Christopher Hepburn — Geology & Geophysics
Prof. Antonio Mastrobuono — Romance Languages
Prof. Francis M. McLaughlin — Economics
Prof. Jolane Solomon — Biology

School of Management

Prof. George A. Aragon
Prof. Jerry A. Viscione

School of Education

Prof. John Junkala

School of Nursing

Prof. Marjory Gordon
Prof. Nancy C. McCarthy

Law School

Prof. Charles H. Baron

School of Social Work

Prof. Demetrius Iatridis

EX-OFFICIO MEMBERS

Dr. Mary Dineen — Dean, School of Nursing
Rev. Charles F. Donovan, S.J. — Dean of Faculties
Dr. June G. Hopps — Dean, Graduate School of Social Work
Prof. Richard G. Huber — Dean, Law School
Prof. John J. Neuhauser — Dean, School of Management

Dr. Thomas F. O'Connell — University Librarian
Rev. Thomas P. O'Malley, S.J. — Dean, College of Arts and Sciences
Dr. Lester E. Przewlocki — Dean, School of Education
Dr. Donald J. White — Dean, Graduate School of Arts and Sciences
Rev. James A. Woods, S.J. — Dean, Evening College

STUDENT SENATORS

Undergraduate Students

Larry Byron — Management
Janet Fallon — Arts & Sciences
Mary Flood — Arts & Sciences
Ellen Hutchinson — Arts & Sciences
Beth Joyce — Nursing
Ellie Mannarino — Education
Paul Nugent — Arts & Sciences
Sarah Peavey — Arts & Sciences

Graduate Student Senator

Kristine Doll

Evening College Student Senator

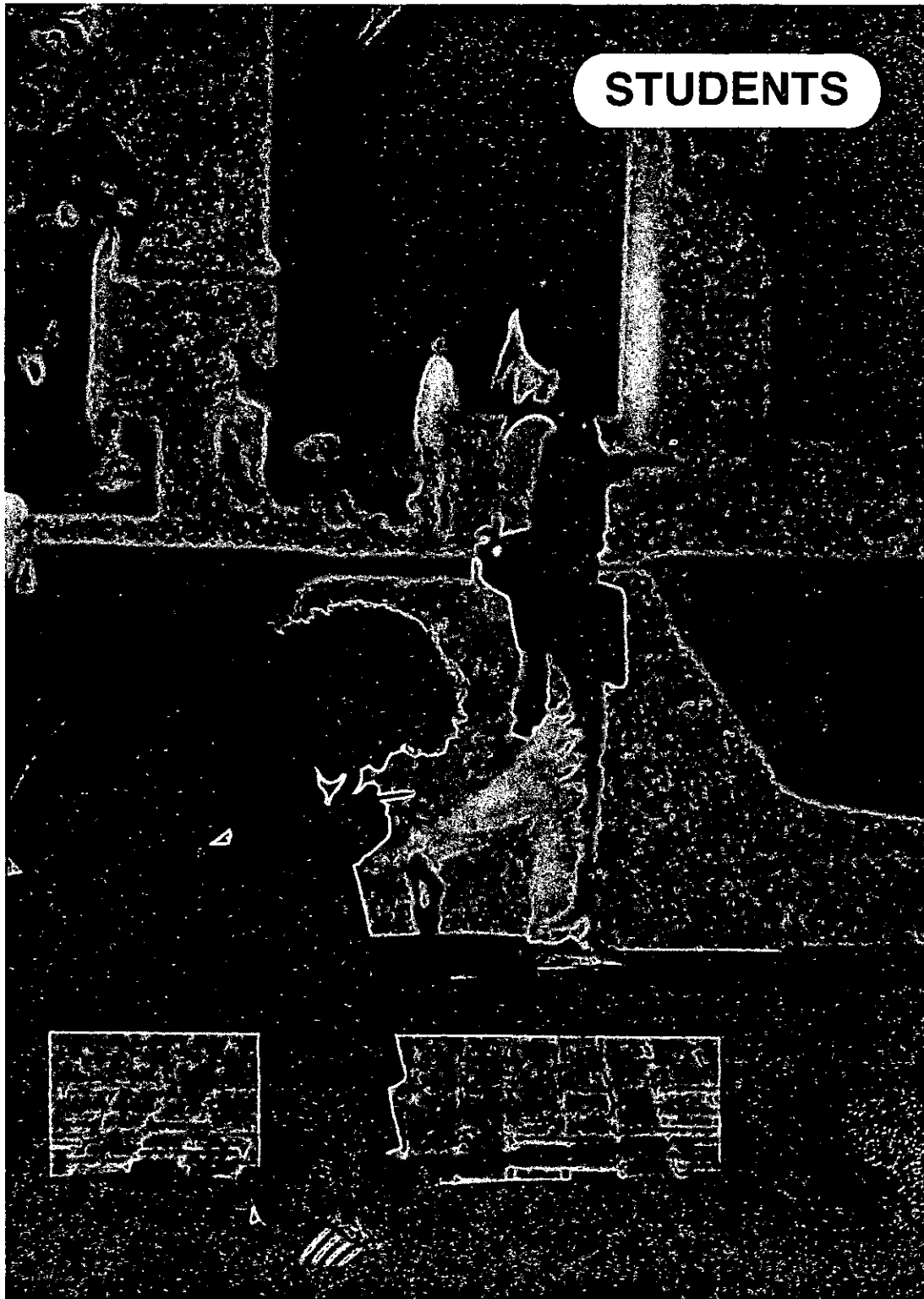
Nelson J. Desjerdins

OFFICERS

Richard G. Huber — Moderator
Nelson J. Desjerdins — Vice-Moderator
Janet Fallon — Secretary

EXECUTIVE COMMITTEE

George Aragon
Larry Byron
Rev. Edward Callahan, S.J.
Kristine Doll
Rev. Charles F. Donovan, S.J., ex officio
John Neuhauser, Chairman



September 1976 — student in quadrangle.

Freshman Applications And Enrollment (Full Time)

Fall	Applications	Enrollment		Total
		Men	Women	
1969	5,242	1,232	364	1,596
1970	6,605	1,402	685	2,087
1971	6,712	1,024	725	1,749
1972	7,286	1,253	976	2,229
1973	8,358	913	874	1,787
1974	8,377	1,144	1,008	2,152
1975	9,486	962	1,069	2,031
1976	10,848	1,041	1,091	2,132
1977	11,336	1,028	1,177	2,205
1978*	12,411	901	1,176	2,077

Source: Admissions Office

Freshmen Applications and Enrollees* Geographic Distribution Class of 1982

State	Applications	Enrollees*	State	Applications	Enrollees*
Alabama	2	1	Nebraska	5	—
Arkansas	1	—	North Carolina	6	—
Arizona	3	—	New Hampshire	170	25
California	73	6	New Jersey	1,279	176
Colorado	7	—	New Mexico	2	—
Connecticut	1,493	203	New York	2,071	248
District of Columbia	65	10	Ohio	124	19
Delaware	22	1	Oklahoma	4	—
Florida	78	5	Oregon	5	—
Georgia	15	1	Pennsylvania	451	51
Guam	1	—	Puerto Rico	115	23
Hawaii	3	1	Rhode Island	415	70
Idaho	4	—	South Carolina	5	2
Illinois	183	27	Tennessee	4	—
Indiana	24	—	Texas	19	3
Iowa	3	1	Utah	1	—
Kansas	5	—	Vermont	36	5
Kentucky	4	—	Virginia	69	10
Louisiana	5	—	Virgin Islands	1	—
Massachusetts	4,937	1,094	Washington	8	1
Maryland	225	25	Wisconsin	42	6
Maine	105	15	West Virginia	7	2
Michigan	79	18	Wyoming	1	—
Minnesota	35	7	Foreign	166	15
Missouri	32	6	TOTAL	12,411	2,077
Mississippi	1	—			

*Based on Deposits Received as of 7/25/78
Source: Admissions Office

SAT Averages by Class

Class	Verbal	Mathematical
1966	535	544
1967	544	549
1968	559	574
1969	565	576
1970	556	570
1971	546	567
1972	556	578
1973	549	574
1974	533	554
1975	530	554
1976	528	552
1977	518	554
1978	515	548
1979	504	544
1980	511	550
1981	496	538
1982	509	544

Source: Admissions Office

Undergraduate Transfer Students Enrollment by Year and Sex

Fall	Men	Women	Total
1971	88	115	203
1972	177	283	460
1973	146	267	413
1974	251	300	551
1975	163	251	414
1976	240	360	600
1977	113	233	346
1978*	120	180	300

Enrollment by Type of Previous Institution**

Fall	2-Year Public	2-Year Private	4-Year Public	4-Year Private	Total
1974	77	77	82	315	551
1975	41	58	83	232	414
1976	54	48	156	342	600
1977	35	28	79	204	346
1978 *	30	24	69	177	300

*Estimated

**Statistics for 1971, 1972 & 1973 are not available for this table.

Source: Admissions Office

**Graduate and Undergraduate Enrollment
Full- and Part-Time**

Year	Undergraduate			Graduate			Total
	F.T.*	P.T.	Total	F.T.	P.T.	Total	
1972-73	7,656	830	8,486	1,907	1,394	3,301	11,787
1973-74	7,774	967	8,741	2,005	1,635	3,640	12,381
1974-75	8,325	893	9,218	1,861	1,670	3,531	12,749
1975-76	8,749	1,095	9,844	1,881	1,820	3,701	13,545
1976-77	8,792	1,107	9,899	1,880	1,833	3,713	13,612
1977-78	9,066	1,221	10,287	1,837	1,844	3,681	13,968

*Includes full time students in Evening College
Source: Registrar

**Undergraduate Day and Evening
and
Graduate Enrollment**

Year	Undergraduate			Graduate/ Professional	Total
	Day	Evening	Total		
1969-70	6,231	984	7,115	3,099	10,214
1970-71	6,663	1,076	7,739	3,217	10,956
1971-72	6,640	1,101	7,741	3,370	11,111
1972-73	7,313	1,173	8,486	3,301	11,787
1973-74	7,543	1,198	8,741	3,640	12,381
1974-75	8,024	1,194	9,218	3,531	12,749
1975-76	8,463	1,381	9,844	3,701	13,545
1976-77	8,486	1,413	9,899	3,713	13,612
1977-78	8,705	1,582	10,287	3,681	13,968

Source: Registrar

Undergraduate Enrollment By School

Year	A & S	SOM	Education	Nursing	Evening	Total
1970-71	3,032	1,774	1,268	589	1,076	7,739
1971-72	3,145	1,641	1,284	570	1,101	7,741
1972-73	3,589	1,663	1,344	717	1,173	8,486
1973-74	3,864	1,657	1,266	756	1,198	8,741
1974-75	4,284	1,724	1,263	753	1,194	9,218
1975-76	4,651	1,947	1,150	715	1,381	9,844
1976-77	4,848	1,911	1,021	706	1,413	9,899
1977-78	5,013	2,010	926	756	1,582	10,287

Source: Registrar

Graduate Enrollment By School

Year	A&S*	SOM	Social		Total
			Work	Law	
1970-71	2,019	351	206	641	3,217
1971-72	2,107	288	244	731	3,370
1972-73	2,048	317	228	708	3,301
1973-74	2,388	320	244	688	3,640
1974-75	2,245	319	257	710	3,531
1975-76	2,302	398	267	734	3,701
1976-77	2,255	446	258	754	3,713
1977-78	2,187	493	243	758	3,681

*Includes Graduate Education and Nursing

Source: Registrar

NOTE: All enrollment statistics are as of 10-19-77.
Enrollment figures fluctuate throughout the
year as a result of withdrawals, transfers,
and mid-year graduations.

Graduate Enrollment
By Degree Program and Discipline
Full- and Part-Time

	1974-75		1975-76		1976-77		1977-78	
	Masters	Ph.D.	Masters	Ph.D.	Masters	Ph.D.	Masters	Ph.D.
American Studies	18	—	12	1	17	1	18	1
A&S Unspecified	884	14	863	20	881	15	113**	6
Biology	26	15	26	22	35	18	57	21
Chemistry	19	13	21	15	16	16	17	22
Classics	8	—	11	—	7	—	6	—
Economics	4	63	3	64	7	60	8	86
Education	717	312	672	357	660	352	1,092**	428
English	65	12	73	20	67	19	89	23
French	26	16	22	10	26	7	32	18
Geology	12	—	13	—	10	—	12	—
Geology-Geophysics	10	—	15	1	20	1	27	—
Geology NSF	—	—	1	—	—	—	—	—
Geophysics	3	—	8	—	11	—	9	—
Germanic Studies	—	—	1	10	1	1	1	1
Greek	—	—	—	—	2	—	2	—
History	22	12	39	23	34	23	40	29
Interdisciplinary	2	—	1	—	—	3	1	5
Italian	—	—	—	—	3	—	5	—
Latin	4	—	3	—	—	—	—	—
Law	725	—	758	—	767	—	767	—
Linguistics	—	—	1	—	1	—	—	—
Management	418	—	456	—	510	—	547	—
Mathematics	13	—	18	—	14	—	17	—
Mathematics NSF	—	—	2	—	—	—	34	—
Nursing	78	—	77	—	85	—	114	—
Philosophy	18	40	25	50	23	41	32	44
Physics	3	18	7	17	7	13	10	12
Political Science	27	15	25	21	28	28	42	33
Psychology	11	33	13	38	6	39	12	45
Russian	4	—	4	—	4	—	3	—
Slavic	2	—	4	—	2	—	7	—
Social Work	264	—	279	—	266	—	275	—
Sociology	36	18	26	17	28	21	32	33
Spanish	14	10	13	8	17	5	19	6
Theology	10	14	19	16	20	18	39	24
Totals*	3,443	605	3,511	710	3,575	681	3,479	837

*Figures include students who attended for just one semester, as well as those who attended a full year.

** Many of the A & S Unspecifieds now appear in Education because of stricter requirements for declaring a major department.

Source: Registrar

Undergraduate and Graduate Enrollment By Sex

Year	Undergraduate		Graduate/ Professional		Total		Total Enrollment
	Men	Women	Men	Women	Men	Women	
1968-69	5,129	1,879	1,880	1,084	7,009	2,963	9,972
1969-70	5,205	1,910	1,974	1,125	7,179	3,035	10,214
1970-71	5,311	2,428	1,983	1,234	7,294	3,662	10,956
1971-72	5,019	2,722	2,029	1,341	7,048	4,063	11,111
1972-73	4,945	3,541	1,975	1,326	6,920	4,867	11,787
1973-74	4,700	4,041	2,022	1,618	6,722	5,659	12,381
1974-75	4,745	4,473	1,831	1,700	6,576	6,173	12,749
1975-76	4,779	5,065	1,908	1,793	6,687	6,858	13,545
1976-77	4,695	5,204	1,867	1,846	6,562	7,050	13,612
1977-78	4,850	5,437	1,802	1,879	6,652	7,316	13,968

Source: Registrar

Full-Time Equivalent Enrollment**

Year	Undergraduate			Graduate/ Professional	
	Day	Evening	Total	Professional	Total
1969-70	6,170	480	6,650	2,324	8,974
1970-71	6,589	491	7,080	2,464	9,544
1971-72	6,611	638	7,249	2,545	9,794
1972-73	7,296	637	7,933	2,378	10,311
1973-74	7,518	578	8,096	2,550	10,646
1974-75	8,008	614	8,622	2,418	11,040
1975-76	8,463	651	9,114	2,486	11,600
1976-77	8,486	675	9,161	2,491	11,652
1977-78	8,705	768	9,473	2,440	11,913

** Method of computation: three part-time students equals one Full-time Equivalent Student.

Source: Registrar

Evening College Enrollments

Year	Full Time		Part Time		Total		Total
	Men	Women	Men	Women	Men	Women	
Fall 1974-75	201	124	333	536	534	660	1,194
Spring 1974-75	177	85	298	454	475	539	1,014
Fall 1975-76	180	106	427	668	607	774	1,381
Spring 1975-76	163	97	327	507	490	604	1,094
Fall 1976-77	188	118	397	710	585	828	1,413
Spring 1976-77	181	117	326	542	507	659	1,166
Fall 1977-78	224	137	449	772	673	909	1,582
Spring 1977-78	204	153	391	618	595	771	1,366

Source: Registrar

Summer Session Enrollment

Summer	Regular Session			Workshops and Institutes	
	Undergraduate	Graduate/ Professional	Total		Total
1967	1,270	1,113	2,383	870	3,253
1968	1,251	1,161	2,412	1,033	3,445
1969	1,028	1,592	2,620	1,451	4,071
1970	691	1,434	2,125	679	2,804
1971	676	1,149	1,825	508	2,333
1972	607	1,077	1,684	446	2,130
1973	622	1,155	1,777	623	2,400
1974	692	1,116	1,808	714	2,522
1975	889	1,107	1,996	769	2,765
1976	887	1,062	1,949	670	2,619
1977	898	1,026	1,924	688	2,612
1978	924	971	1,895	708	2,603

Source: Summer Session Office

**Geographic Distribution of Students
(Graduate and Undergraduate) Fall 1977***

	Undergrad	Evening	Grad. A&S	Social Work	Grad. SOM	Law School	Total
Foreign	55		40	3	4	3	105
Alaska	1		1				2
Alabama	1		1			1	3
Arkansas			1			1	2
Arizona	4		1			1	6
California	33	4	22		2	16	77
Colorado	5		5	3		1	14
Connecticut	914	16	74	10	12	30	1,056
DC	27		2				29
Delaware	19		4		1	1	25
Florida	57	4	9	1		7	78
Georgia	6		3	1		2	12
Hawaii	1					4	5
Idaho	1		1			2	4
Illinois	114	2	13		2	10	141
Indiana	12		8			4	24
Iowa	5		3			2	10
Kansas	1					1	2
Kentucky	3		2				5
Louisiana	7		1	2		1	11
Maine	79	5	14	6	2	8	114
Maryland	89	2	18	1	1	2	113
Massachusetts	4,507	1,487	1,507	165	420	435	8,521
Michigan	43	3	10	1	1	15	73
Minnesota	20		1				21
Mississippi	1		1				2
Missouri	8		3		1	3	15
Montana							0
Nebraska	2		3				5
Nevada	1						1
New Hampshire	103	6	51	4	7	17	188
New Jersey	715	13	51	1	6	29	815
New Mexico	1		1			2	4
New York	1,130	28	136	12	18	98	1,422
North Carolina	3		2	1	2		8
North Dakota			1				1
Ohio	70	4	17		1	10	102
Oklahoma	1						1
Oregon			3				3
Pennsylvania	245	3	54	6	4	16	328
Puerto Rico	49		4			2	55
Rhode Island	277	4	66	20	8	16	391
South Carolina	1		1			1	3
South Dakota	1						1
Tennessee	4		2			3	9
Texas	13		11			1	25
Utah							0
Vermont	18		5	2	1	4	30
Virginia	22	1	21	1		4	49
Virgin Islands	1						1
Washington	4		2			1	7
West Virginia	2		3	1			6
Wisconsin	27		8	2		4	41
Wyoming	2						2
Totals	8,705	1,582	2,187	243	493	758	13,968

*These figures are based on the state which the student lists as a permanent address, which may not necessarily reflect the true "home" state.

Source: Registrar

**New International Students Entering in Summer and
Fall 1977, and Spring 1978***

By Sex

Program	Men	Women	Total
Undergraduate	4	10	14
Graduate	32	27	59
Total	36	37	73

Summary By Degree

Undergraduate	
A.B. Candidates	7
B.S. Candidates	7
Total	<u>14</u>
Graduate	
Doctoral	16
Masters	41
Post Doctoral	2
Total	<u>59</u>
Total New Student Enrollment	<u>73</u>

*The totals in the statistics given above are included in the totals given below.

**International Student Enrollment
1977-78**

By Sex

Program	Men	Women	Total
Undergraduate	29	30	59
Graduate	71	51	122
Practical Training	6	4	10
Total	106	85	191

Summary by Degree

Undergraduate	
A.B. Candidates	34
B.S. Candidates	25
Total	<u>59</u>
Graduate	
Doctoral	46
Masters	74
Post Doctoral	2
Total	<u>122</u>
Practical Training (Field Work)	10
Total International Enrollment	<u>191</u>

Source: Office of Student Programs & Resources

International Student Enrollment

1977-78

By School

College of Arts & Sciences	40
School of Education	1
School of Nursing	1
School of Management	17
Graduate Arts & Sciences	100
Graduate School of Social Work	3
Graduate School of Management	17
Law School	2
Practical Training (Field Work)	10
Total	191

By Country

Country	Men	Women	Total	Country	Men	Women	Total
Algeria	1	2	3	Japan	5	5	10
Australia	6	4	10	Kenya	1	0	1
Austria	0	1	1	Lebanon	2	0	2
Bahamas	0	1	1	Lesotho	1	0	1
Bangladesh	1	1	2	Liberia	0	1	1
Bermuda	2	0	2	Libya	1	0	1
Brazil	1	2	3	Mexico	1	1	2
Canada	9	6	15	Netherlands	2	3	5
Chile	2	0	2	New Zealand	1	0	1
Colombia	2	1	3	Nicaragua	1	5	6
Dominica	1	0	1	Nigeria	3	1	4
Dominican Republic	0	1	1	Norway	1	0	1
Ecuador	3	0	3	Pakistan	0	1	1
Ethiopia	4	0	4	Panama	1	1	2
Finland	0	1	1	Peru	2	2	4
France	4	0	4	Philippines	3	2	5
Ghana	1	0	1	Somalia	1	0	1
Great Britain	1	1	2	Spain	2	1	3
Greece	1	2	3	Sri Lanka	1	0	1
Hong Kong	4	9	13	Switzerland	0	3	3
India	7	2	9	Taiwan	6	3	9
Indonesia	1	0	1	Thailand	5	7	12
Iran	3	6	9	Trinidad	2	0	2
Ireland	4	2	6	Turkey	1	1	2
Israel	2	2	4	Venezuela	2	1	3
Italy	1	1	2	Zaire	0	1	1
Jamaica	0	1	1	Totals	106	85	191

Source: Office of Student Programs & Resources

Undergraduate and Graduate Minority Enrollment

	1974-75			1975-76			1976-77			1977-78		
	Men	Women	Total	Men	Women	Total	Men	Women	Total	Men	Women	Total
Undergraduate												
Black	148	194	342	123	184	307	155	206	361	182	217	399
American Indian	2	2	4	1	3	4	1	4	5	3	7	10
Oriental	23	27	50	23	27	50	33	45	78	44	59	103
Hispanic	33	24	57	33	32	65	38	35	73	72	65	137
Other	25	14	39	15	14	29	19	23	42	21	14	35
	<u>231</u>	<u>261</u>	<u>492</u>	<u>195</u>	<u>260</u>	<u>455</u>	<u>246</u>	<u>313</u>	<u>559</u>	<u>322</u>	<u>362</u>	<u>684</u>
Graduate												
Black	32	54	86	36	71	107	36	73	109	43	74	117
American Indian		4	4	3	2	5	2	0	2	1	2	3
Oriental	17	31	48	21	34	55	20	36	56	17	34	51
Hispanic	6	5	11	12	6	18	16	16	32	20	30	50
Other	4	15	19	2	11	13	2	11	13	6	15	21
	<u>59</u>	<u>109</u>	<u>168</u>	<u>74</u>	<u>124</u>	<u>198</u>	<u>76</u>	<u>136</u>	<u>212</u>	<u>87</u>	<u>155</u>	<u>242</u>
Total Graduate and Undergraduate	290	370	660	269	384	653	322	449	771	409	517	926

Source: Registrar

Veterans Enrolled at Boston College 1977-78*

School	Men	Women	Full-Time	Part-Time	Total
Arts and Sciences	29	17	46		46
Education	5	7	12		12
Evening College	50	5	37	18	55
Nursing	8	7	15		15
Management	23	2	25		25
Graduate School of A & S	50	12	35	27	62
Graduate SOM	36	1	9	28	37
Law School	24	2	26		26
Social Work	8	1	7	2	9
Total	233	54	212	75	287
		287		287	

* Due to a change in reporting to the VA, these figures reflect a significant drop from those appearing in the 1977 Fact Book. Students (non-veterans) receiving VA pension benefits were previously included.

Source: Registrar

**Undergraduate Degrees Conferred*
By Degree and Number of Majors**

Arts and Sciences	1974-75	1975-76	1976-77	1977-78
A. B.				
Single Major	559	687	613	726
Double Major	212	242	239	277
Triple Major	3	5	3	1
	<u>774</u>	<u>934</u>	<u>855</u>	<u>1,004</u>
B. S.				
Single Major	116	136	146	162
Double Major	31	47	54	43
Triple Major	—	—	—	1
	<u>147</u>	<u>183</u>	<u>200</u>	<u>206</u>
Total A&S	921	1,117	1,055	1,210
School of Education-A.B.				
Single Major	284	334	273	119
Double Major	17	23	27	136
Triple Major	—	1	2	—
	<u>301</u>	<u>358</u>	<u>302</u>	<u>255</u>
School of Management-B.S.				
Single Major	273	430	413	396
Double Major	36	62	60	57
	<u>309</u>	<u>492</u>	<u>473</u>	<u>453</u>
School of Nursing-B.S.	205	225	168	175
Subtotal-Undergraduate Degrees	<u>1,736</u>	<u>2,192</u>	<u>1,998</u>	<u>2,093</u>
Evening College				
A. B.	71	74	63	70
B. S.	20	12	2	—
A. A.	—	1	—	—
	<u>91</u>	<u>87</u>	<u>65</u>	<u>70</u>
Total Undergraduate Degrees Conferred	1,827	2,279	2,063	2,163

*Sept.-Jan.-June

Source: Registrar

**Undergraduate Degrees Conferred
By Major***

	1974-75	1975-76	1976-77	1977-78
Accounting	115	202	190	179
Administrative Science	1	—	—	—
American Studies	—	3	—	2
Art History	19	17	14	15
Biology	116	136	151	154
Chemistry	18	34	32	29
Classics	6	1	5	1
Computer Science	18	19	12	12
Deaf/Blind	16	15	—	—
Earth Science	1	—	—	—
Economics	128	118	89	120
English	177	154	157	149
Elementary Education	103	99	84	215
Finance	54	68	64	52
Fine Arts	—	1	—	—
French	15	7	18	18
General Business	—	—	—	—
General Management	16	—	—	—
Geology	4	7	13	16
Geophysics	—	1	—	1
German	3	4	4	8
History	54	77	77	74
Independent	—	4	3	—
Italian	1	1	—	2
Linguistics	2	—	1	4
Management	3	33	34	41
Marketing	79	139	161	157
Mathematics	26	46	39	58
Modern Languages	—	1	—	—
Nursing	205	225	168	175
Operations Management	2	2	2	—
Philosophy	52	45	35	42
Physics	8	4	5	7
Political Science	115	177	161	210
Production Management	4	1	—	—
Production & Operations Mgmt.	—	—	—	—
Psychology	104	141	120	136
Romance Languages	8	3	1	7
Russian	—	6	4	2
Secondary Education	59	50	47	25
Slavic Studies	—	1	1	2
Sociology	62	123	88	97
Spanish	8	13	13	12
Special Education/Elem. Ed.**	116	176	160	—
Speech Communication	5	15	26	50
Speech Theatre	5	4	3	5
Studio Art	—	8	9	11
Theology	8	10	7	5
TOTALS	1,736	2,191	1,998	2,093 ***

*Double and Triple majors counted by first majors.

**Elem. Ed. majors with concentration in Special Ed.

*** Evening College majors are not included in this total.

Source: Registrar

Undergraduate Degrees Conferred By School and by Major

	1976						1977						1978					
	A. & S.		Ed.	SOM	Nurs.	TOT.	A. & S.		Ed.	SOM	Nurs.	TOT.	A. & S.		Ed.	SOM	Nurs.	TOT.
	A.B.	B.S.	B.A.	B.S.	B.S.		A.B.	B.S.	B.A.	B.S.	B.S.		A.B.	B.S.	B.A.	B.S.	B.S.	
Accounting				202		202				190		190				179		179
Admin. Science						—						—						—
American Studies	3					3						—						2
Art History	17					17	14					14	15					15
Biology		135	1			136		151				151		154				154
Chemistry		34				34		31	1			32		29				29
Classics	1					1	5					5	1					1
Computer Science				19		19				12		12			12			12
Deaf/Blind			15			15						—						—
Earth Science						—						—						—
Economics	90			28		118	79			10		89	108			12		120
English	147		7			154	157					157	148		1			149
Elementary Ed.			99			99			84			84			215			215
Finance				68		68				64		64				52		52
Fine Arts	1					1						—						—
French	7					7	18					18	18					18
General Management						—		13				13						—
Geology		7				7						—		15	1			16
Geophysics		1				1						—		1				1
German	4					4			1			1	8					8
History	77					77	75		2			77	72		2			74
Independent	2	2				4	3					3						—
Italian	1					1						1	2					2
Linguistics						—	1					1	4					4
Management				33		33				34		34			41			41
Marketing				139		139				161		161			157			157
Mathematics	44		2			46	37		2			39	57		1			58
Modern Languages	1					1						—						—
Nursing					225	225					168	168				175		175
Operations Management				2		2				2		2						—
Philosophy	45					45	35					35	42					42
Physics		4				4		5				5		7				7
Political Science	177					177	161					161	210					210
Production Management				1		1						—						—
Psychology	141		1			142	120					120	133		3			136
Romance Languages	3					3	1					1	7					7
Russian	6					6	4					4	2					2
Secondary Education			50			50			47			47			25			25
Slavic Studies	1					1	1					1	2					2
Sociology	118		5			123	85		3			88	92		5			97
Spanish	13					13	13					13	11		1			12
Special Education			176			176			160			160						—
Speech Communication	14		1			15	24		2			26	50					50
Speech Theatre	3		1			4	3					3	4		1			5
Studio Art	8					8	9					9	11					11
Theology	10					10	7					7	5					5
TOTALS	934	183	358	492	225	2,192*	855	200	302	473	168	1,998*	1,004	206	255	453	175	2,093*

*Evening College Majors are not included in this total.

Source: Registrar

**Undergraduate and Graduate Degrees Conferred*
By Degree and by Sex**

	1974-75			1975-76			1976-77			1977-78		
	Men	Women	Total	Men	Women	Total	Men	Women	Total	Men	Women	Total
Undergraduate												
College of A. & S.												
A.B.	461	313	774	469	465	934	402	453	855	492	512	1,004
B.S.	103	44	147	123	60	183	138	62	200	158	48	206
Total A. & S.	564	357	921	592	525	1,117	540	515	1,055	650	560	1,210
School of Ed.-A.B.	62	239	301	59	299	358	39	263	302	38	217	255
School of Nursing-B.S.	2	203	205	5	220	225	1	167	168	1	174	175
School of Mgmt.-B.S.	280	29	309	421	71	492	368	105	473	334	119	453
	344	471	815	485	590	1,075	408	535	943	373	510	883
Subtotal Undergraduate	908	828	1,736	1,077	1,115	2,192	948	1,050	1,998	1,023	1,070	2,093
Evening College												
A.B.	37	34	71	41	33	74	36	27	63	41	29	70
B.S.	19	1	20	11	1	12	2	0	2	—	—	—
A.A.	—	—	—	—	1	1	—	—	—	—	—	—
	56	35	91	52	35	87	38	27	65	41	29	70
Total Undergraduate Degrees Conferred	964	863	1,827	1,129	1,150	2,279	986	1,077	2,063	1,064	1,099	2,163
Graduate***												
Ph.D.	52	23	75	52	23	75	53	33	86	44	26	70
D.Ed.	3	1	4	13	2	15	11	1	12	7	4	11
M.A.	77	72	149	64	53	117	62	64	126	61	58	119
M.S.	19	67	86	9	65	74	24	77	101	14	85	99
M.Ed.	98	299	397	106	309	415	97	230	327	52	219	271
M.A.T.	8	13	21	10	17	27	6	7	13	10	10	20
M.S.T.	10	8	18	2	1	3	9	2	11	5	4	9
J.D.	160	46	206	166	66	232	169	76	245	167	64	231
M.B.A.	82	8	90	73	13	86	66	33	99	38	72	110
M.S.P.	7	10	17	7	8	15	9	18	27	9	9	18
M.S.W.	24	62	86	34	61	94	19	70	89	62	24	86
C.A.E.S.	15	18	33	11	21	32	5	18	23	10	20	30
Total Graduate Degrees Conferred	555	627	1,182	547	639	1,185	530	629	1,159	479	595	1,074
Total Undergraduate Degrees Conferred	964	863	1,827	1,129	1,150	2,279	986	1,077	2,063	1,064	1,099	2,163
Total Undergraduate & Graduate Degrees	1,519	1,490	3,009	1,676	1,789	3,464	1,516	1,706	3,222	1,543	1,694	3,237

*Sept.-Jan.-June

**See page 62 "Degrees Conferred by Boston College"

Source: Registrar

**Undergraduate and Graduate Financial Aid
1975-78
Number of Students**

Type of Aid — Undergrad.	1975-76	1976-77	1977-78
University Scholarships and Grants ¹	1,670	1,870	1,900
State Scholarships ²	1,023	943	1,021
Basic Educational Opportunity Grants ³	773	1,220	1,147
Supplemental Educational Opportunity Grants ⁴	768	643	790
Work-Study	1,391	1,114	1,231
National Direct Student Loans ⁵	2,091	2,141	2,308
Subtotal	7,642	7,931	8,397
Other ⁶	406	381	314
Undergraduate TOTAL ⁷	8,048	8,312	8,711
Type of Aid — Graduate			
Work-Study	340	319	282
National Direct Student Loans ⁵	303	389	345
Total Undergraduate and Graduate ⁷	8,765	9,020	9,338

¹ This statistic includes regular university scholarships and grants (through the operating budget), faculty kin tuition remission, minority scholarships (other than Black Talent), Jesuit Reduction, Alumni Association Scholarships, and endowed monies for scholarships. This statistic does not include law scholarships.

² State scholarship funds to students from Massachusetts, Vermont, Connecticut, New Jersey, Pennsylvania, Rhode Island.

³ Students who are enrolled at least half time in an undergraduate degree program are eligible to apply for these grants. Grants are awarded to students with exceptional need, and eligibility is determined directly by the federal government.

⁴ Available to students enrolled at least half time in an undergraduate degree program. These grants are awarded to students with exceptional need and are termed "last resort." The amount of the award must be matched by an equal amount of other aid.

⁵ Available to undergraduates and graduates enrolled at least half time. These loan funds are obtained by Federal Government contributions, Boston College contributions and collections of previous loans awarded. The loans have up to a 10 year repayment period with an interest rate of 3% per year on the unpaid balance. These figures do not include Law School or Nursing School loan funds.

⁶ Includes Black Talent and athletic programs.

⁷ This is a duplicated total since some students receive more than one type of aid.

Source: Director of Financial Aid

**Undergraduate and Graduate Financial Aid
1975-78
Thousands of Dollars**

Type of Aid — Undergrad.	1975-76	1976-77	1977-78
University Scholarships and Grants ¹	\$1,424	\$1,420	\$1,775
State Scholarships ²	870	795	854
Basic Educational Opportunity Grants ³	717	1,108	1,071
Supplemental Educational Opportunity Grants ⁴	564	512	646
Work-Study	1,664	1,255	1,463
National Direct Student Loans ⁵	2,217	2,319	2,523
Subtotal	<u>7,456</u>	<u>7,409</u>	<u>8,332</u>
Other ⁶	1,112	1,180	1,031
Undergraduate TOTAL	<u>8,568</u>	<u>8,589</u>	<u>9,363</u>
Type of Aid — Graduate			
Work-Study	476	317	345
National Direct Student Loans ⁵	500	853	665
Total Undergraduate and Graduate	<u>\$9,544</u>	<u>\$9,759</u>	<u>\$10,373</u>

¹ This statistic includes regular university scholarships and grants (through the operating budget), faculty kin tuition remission, minority scholarships (other than Black Talent), Jesuit Reduction, Alumni Association Scholarships, and endowed monies for scholarships. This statistic does not include law scholarships.

² State scholarship funds to students from Massachusetts, Vermont, Connecticut, New Jersey, Pennsylvania, Rhode Island.

³ Students who are enrolled at least half time in an undergraduate degree program are eligible to apply for these grants. Grants are awarded to students with exceptional need, and eligibility is determined directly by the federal government.

⁴ Available to students enrolled at least half time in an undergraduate degree program. These grants are awarded to students with exceptional need and are termed "last resort." The amount of the award must be matched by an equal amount of other aid.

⁵ Available to undergraduates and graduates enrolled at least half time. These loan funds are obtained by Federal Government contributions, Boston College contributions and collections of previous loans awarded. The loans have up to a 10 year repayment period with an interest rate of 3% per year on the unpaid balance. These figures do not include Law School or Nursing School loan funds.

⁶ Includes Black Talent and athletic programs.

Source: Director of Financial Aid

Health Services

Number of Students Served					
Grand Totals	1973-74	1974-75	1975-76	1976-77	1977-78
Total Visits to M.D.	18,299	19,488	19,123	18,718	17,949
Total Visits to R.N.	<u>7,763</u>	<u>9,879</u>	<u>10,671</u>	<u>10,143</u>	<u>10,158</u>
Totals	26,062	29,367	29,794	28,861	28,107
Men			(14,639)	(13,830)	(13,969)
Women			(15,155)	(15,031)	(14,138)
Infirmery*					
Total Admissions	485	637	604	633	546
Men	(255)	(226)	(266)	(280)	(256)
Women	(230)	(411)	(338)	(353)	(290)
Total Patient Days	1,130	1,329	1,367	1,382	1,223
Average Daily Census	5.4	6.1	6.2	6.5	5.8
Average Length of Stay (days)	2.3	2.1	2.2	2.2	2.2
Number of Days in Full Operation	209	216	219	211	210

*Included in Grand Totals
Source: Health Services Office Daily Logs



November 1977 — Gasson Hall rededication.

**Alumni
Comparative Regional Analysis**

Massachusetts	
Metropolitan Boston	
Postal Areas 01701-02009	7,854
02101-02215	16,576
	<u>24,430</u>
Massachusetts outside Metropolitan Boston	9,359
Total Massachusetts Alumni	<u>33,789</u>
New England	
Connecticut	3,012
Maine	659
New Hampshire	1,216
Rhode Island	1,313
Vermont	260
	<u>6,460</u>
Total New England outside Massachusetts	<u>6,460</u>
Massachusetts	33,789
Total New England	<u>40,249</u>
Total outside New England	17,393
Lost Alumni	6,867
TOTAL ALUMNI	<u>64,509</u>

Source: Boston College Alumni Association

**Alumni
Geographic Analysis by State**

Alabama	57	New Hampshire	1,216
Alaska	17	New Jersey	1,891
Arizona	127	New Mexico	44
Arkansas	10	New York	4,010
California	1,212	North Carolina	171
Colorado	159	North Dakota	8
Connecticut	3,012	Ohio	616
Delaware	89	Oklahoma	45
District of Columbia	339	Oregon	54
Florida	683	Pennsylvania	869
Georgia	177	Puerto Rico	81
Guam	1	Rhode Island	1,313
Hawaii	41	South Carolina	51
Idaho	13	South Dakota	18
Illinois	645	Tennessee	78
Indiana	133	Texas	275
Iowa	39	Utah	16
Kansas	49	Vermont	260
Kentucky	86	Virginia	850
Louisiana	82	Virgin Islands	19
Maine	659	Washington	119
Maryland	944	West Virginia	29
Massachusetts	33,789	Wisconsin	171
Michigan	360	Wyoming	8
Minnesota	141	Total U.S.	55,350
Mississippi	10	Foreign Nations	648
Missouri	185	Total Active Alumni	55,998
Montana	23	Inactive Alumni	1,644
Nebraska	39	Lost	6,867
Nevada	17	Total Alumni	64,509*

Source: Boston College Alumni Association

*Exclusive of Class of 1978

Boston College Alumni Clubs

Buffalo	Mid-Hudson
Cape Cod	Minnesota
Central New York	New Hampshire
Chicago	New Jersey
Cincinnati	New Orleans
Cleveland	North Shore
Denver	Northern California (San Francisco)
Detroit	Philadelphia
Fairfield County	Rhode Island
Fall River	Rochester
Florida	St. Louis
Hartford	San Diego
Houston	Seattle
Long Island	Southeastern United States (Georgia)
Los Angeles	Washington, D.C.
Maine	Western Massachusetts (Springfield)
Manhattan Business Group	Wisconsin
Merrimack Valley	Worcester

Source: Boston College Alumni Association

Boston College Alumni Association Activities

Alumni Admissions Counselling	Publications & Communications:
Alumni Programs for Students:	FOCUS
Career Counselling	BOSTON COLLEGE MAGAZINE
Career Fairs	Class Notes
Opportunities Seminars	Social Activities:
Project OUTREACH	Family Day
Alumni Senate Awards:	Homecoming
Nominations-McKenney Award	Fall Football Tour
Nominations-Alumni Awards	Holy Cross Pre-Game Brunch
of Excellence	Laetare Sunday
Nominations-Young Alumni	Alumni Golf Tournament
Achievement Award	Alumni Tennis Tournament
The Boston College Alumni Clubs	Alumni Weekend
Class Organizations & Activities	Overseas Tours
Continuing Education	Boston Alumni Business Lunches
Nominations and Elections	Alumnae Breakfast Club
Placement Services	Young Alumni Events
	Women's Resources

Source: Boston College Alumni Association

**New Heights Advancement Campaign
Volunteer Leadership
1977-1978**

General Chairman
James P. O'Neill, '42
Executive Vice President
Xerox Corporation

Alumni Chairman
Robert J. O'Keefe, '51
Senior Vice President
Chase Manhattan Bank

Annual Gifts and Telethon Chairman
Edward A. Zmijewski, '54
C.P.A.
General Accounting Office

Blue Chips Chairman
James F. McDonough, M.D., '35, D.Sc. '77 (Hon.)

Major Gifts Chairman
John J. Griffin, '35
Vice President
Metropolitan Petroleum Company

Special Gifts Chairman
Samuel T. Church, '43
Executive Vice President
Hospital Laundry Associates

Bequests and Planned Giving Chairman
John G. McElwee, '43, J.D. '50
President and Chief Operating Officer
John Hancock Mutual Life Insurance Co.

Communications Chairman
John M. Connors, Jr., '63
President
Hill, Holiday, Connors & Cosmopolous

Corporations New England Chairman
Thomas A. Sampson, '50
Managing Partner
Arthur Andersen & Company

National Chairman
Joseph F. Abely, Jr., '50
Executive Vice President
R. J. Reynolds Industries, Inc.

Foundations Chairman
John Lowell
Partner
Welch and Forbes

Law School National Chairman
Thomas M. Joyce, J.D. '41
Attorney
Joyce, Capeless, Kilroy, McNulty & Roddy

Law School Executive Vice Chairman
Robert T. Capeless, J.D. '41
Attorney
Joyce, Capeless, Kilroy, McNulty & Roddy

Parents Co-Chairmen
James F. Stanton, '42
Partner
Coleman & Sons
Helen M. Stanton, M.S.W. '43
Trustee, Boston College

Theater Chairman
John M. Cataldo, '41
President
National Freight Traffic Services

PHYSICAL PLANT



October 1976 aerial.

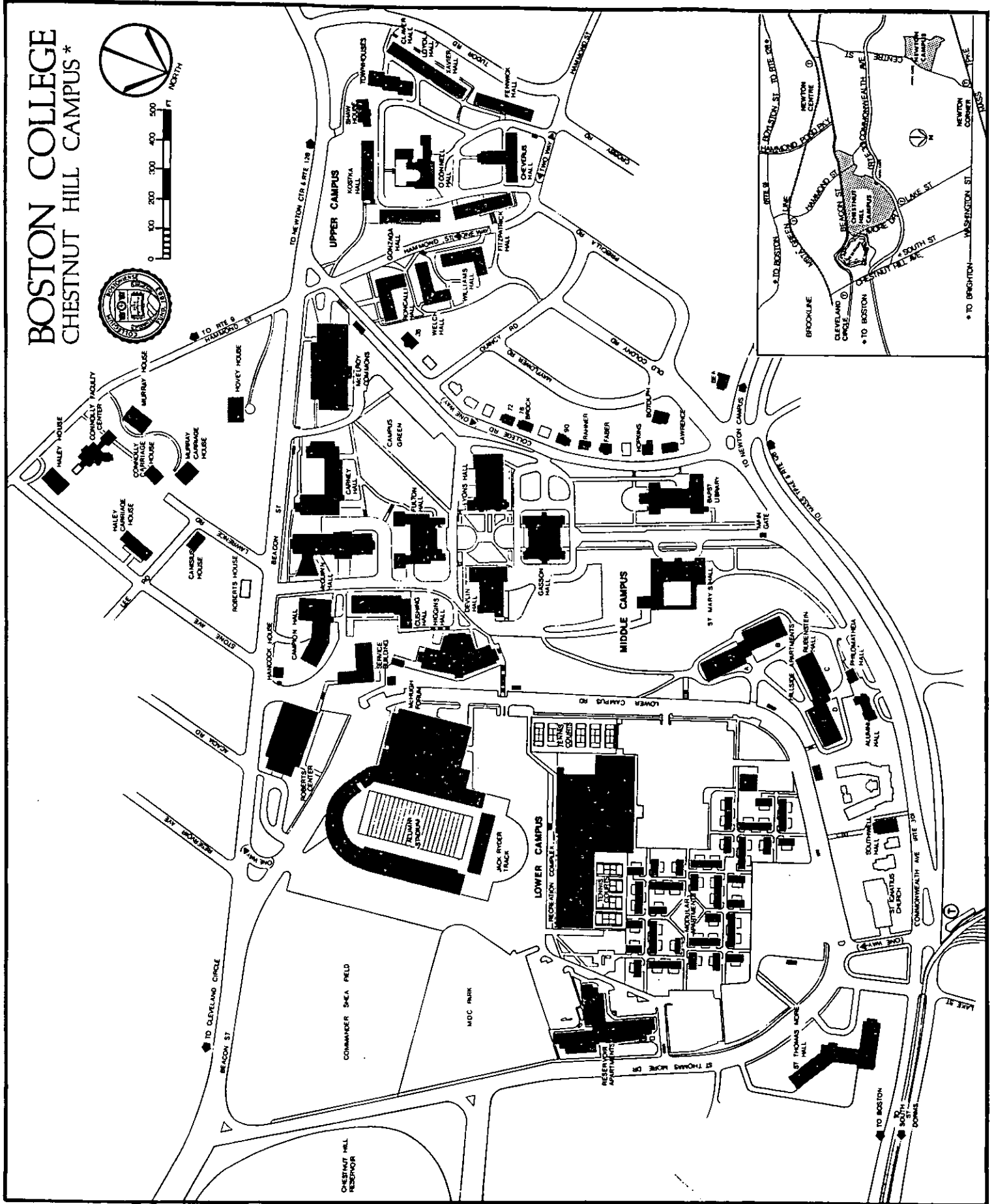
**Boston College Properties
Fall 1978**

	Square Feet	Acres	
UPPER CAMPUS			
Roncalli-Welch-Williams	137,466	3.1	
O'Connell & Upper Dorms	472,838	10.9	
Total Upper Campus	<u>609,730</u>		14.0
MIDDLE CAMPUS			
Area bounded by Beacon St., Lower Campus Rd., College Rd., Commonwealth Avenue - including Hillside, Alumni, Philomatheia, Southwell	1,677,845	38.5	
18 Old Colony Rd. (Botolph)	17,346	.4	
122 College Rd. (Lawrence)	9,579	.2	
116 College Rd. (Hopkins)	7,349	.2	
102 College Rd. (Faber)	7,191	.2	
96 College Rd. (Rahner)	6,463	.1	
90 College Rd.	7,960	.2	
78 College Rd. (Brock)	6,308	.1	
72 College Rd.	7,100	.2	
36 College Rd.	9,126	.2	
176 Commonwealth (Bea)	18,184	.4	
Total Middle Campus	<u>1,774,451</u>		40.7
LOWER CAMPUS			
Area bounded by Lower Campus Rd., Beacon St., & St. Thomas More Drive (excluding MDC property)	2,279,266	52.3	
2150 Commonwealth Ave. (St. Thomas More Hall)	156,575	3.6	
Total Lower Campus	<u>2,435,841</u>		55.9
Total Upper, Middle & Lower Campuses	4,820,022		110.6
NEWTON CAMPUS	1,751,112		40.2
Total Chestnut Hill & Newton Campuses	<u>6,571,134</u>		150.8
OUTLYING PROPERTIES			
Newton:			
258 Beacon St. (Hovey)	178,390	4.1	
292 Hammond St. (Murray)	50,554	1.2	
300 Hammond St. (Connolly)	70,767	1.6	
314 Hammond St. (Haley)	55,710	1.3	
67 Lee Rd. (Canisius)	10,436	.2	
55 Lee Rd.	16,032	.37	
	<u>381,889</u>		8.77
Boston:			
210 Chestnut Hill Ave. (Chestnut)	4,833	.1	
2051 Commonwealth (Greycliff)	4,623	.1	
5 South St. (Linden)	2,407	.1	
9 South St. (Radnor)	3,164	.1	
15 South St. (Pine)	3,759	.1	
19 South St. (Kirkwood)	9,365	.2	
25 South St. (Phelps)	4,711	.1	
39-41 South St. (South)	7,760	.2	
	<u>40,622</u>		1.0
TOTAL PROPERTIES OWNED BY BOSTON COLLEGE	<u>6,993,645</u>		160.57

Source: Director of Physical Plant

NOTE: The above statistics do not include rented properties used in University operations.

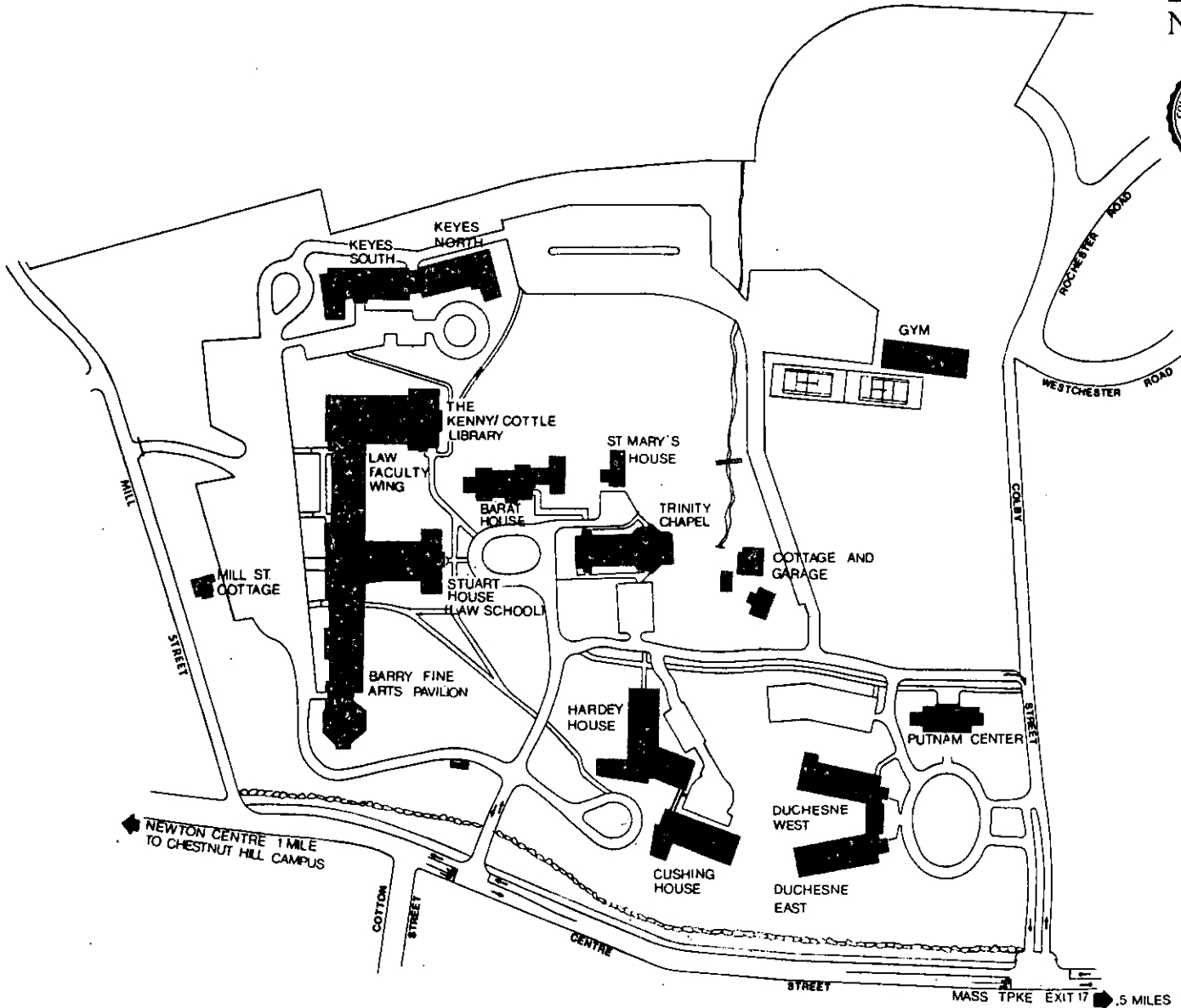
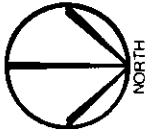
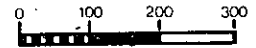
BOSTON COLLEGE CHESTNUT HILL CAMPUS*



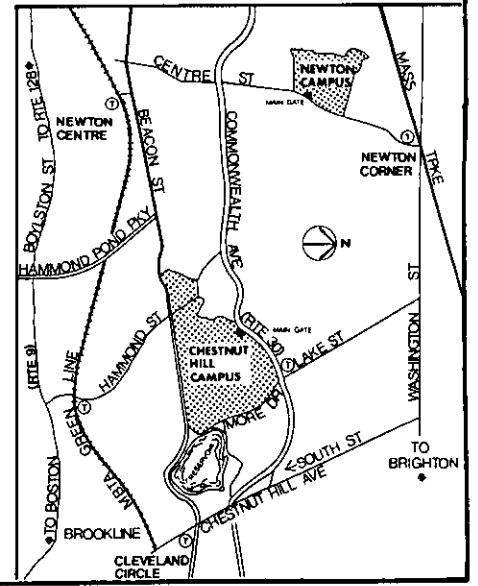
* These maps do not include Weston Observatory, South Street Properties or the temporary rentals — Pine Manor and St. Gabriel's.

* These maps do not include Weston Observatory, South Street Properties or the temporary rentals — Pine Manor and St. Gabriel's.

BOSTON COLLEGE NEWTON CAMPUS*



NEWTON CENTRE 1 MILE
TO CHESTNUT HILL CAMPUS



**Buildings Related To Boston College Operation
Location and Primary Use**

Name	Location	Primary Use	Date Constructed or Acquired
Alumni Hall	74 Commonwealth Ave.	Administrative	1948
Alumni Stadium	Beacon St.	Sports	1957
Bapst Library	Main Campus	Library	1928
Barat House	Newton Campus	Jesuit Res. & Admin.	1974
Barry Fine Arts Pavilion	885 Centre St.	Academic & Admin.	1974
Bea House ¹	176 Commonwealth Ave.	Jesuit Residence	1965
Botolph House	18 Old Colony Road	Administrative	1967
Brock House	78 College Road	Administrative	1972
Campion Hall	Main Campus	Academic & Admin.	1955
Canisius House ¹	67 Lee Road	Jesuit Residence	1966
Cottage & Garage	885 Centre St.	Residence	1974
Carney Hall	Main Campus	Academic & Admin.	1962
Trinity Chapel (Newton)	885 Centre St.	Chapel	1974
Chestnut Hall	210 Chestnut Hill Ave.	Student Residence	1969
Cheverus Hall	127 Hammond St.	Student Residence	1960
Claver Hall	40 Tudor Road	Student Residence	1956
----- Bourneuf -----	36 College Rd.	Administrative	1974
-----	72 College Rd.	Jesuit Residence	1970
-----	90 College Rd.	Administrative	1975
Connolly Faculty Center	300 Hammond St.	Academic	1975
Cushing Hall	Main Campus	Academic & Admin.	1960
Cushing House	885 Centre St.	Student Residence	1974
Devlin Hall	Main Campus	Academic & Admin.	1924
Duchesne East	885 Centre St.	Student Residence	1974
Duchesne West	885 Centre St.	Student Residence	1974
Faber House ¹	102 College Road	Jesuit Residence	1938
Faculty Wing	885 Centre St.	Academic & Admin.	1974
Fenwick Hall	46 Tudor Road	Student Residence	1960
Fitzpatrick Hall	137 Hammond St.	Student Residence	1960
Fulton Hall	Main Campus	Academic & Admin.	1948
Gasson Hall	Main Campus	Academic & Admin.	1913
Gonzaga Hall	149 Hammond St.	Student Residence	1958
Greycliff Hall	2051 Commonwealth Ave.	Student Residence	1969
Haley House	314 Hammond St.	Residence	1969
Hancock House	223 Beacon St.	Residence	1907
Hardey House	885 Centre St.	Student Residence	1974
Higgins Hall ²	Main Campus	Academic & Admin.	1966
Hillside A	100 Commonwealth Ave.	Student Residence	1973
Hillside B	100 Commonwealth Ave.	Student Residence	1973
Hillside C (Renamed Rubenstein Hall)		Student Res. & Admin.	1973
Hillside D	90 Commonwealth Ave.	Student Residence	1973
Hopkins House	116 College Road	Administrative	1968
Hovey House	258 Beacon St.	Academic	1971
Kenny-Cottle Library	885 Centre St.	Library	1974
Keyes North	885 Centre St.	Student Residence	1974
Keyes South	885 Centre St.	Student Residence	1974
Kirkwood Hall	19 South St.	Student Residence	1969
Kostka Hall	149 Hammond St.	Student Residence	1958
Lawrence House	122 College Rd.	Administrative	1968
-----	55 Lee Rd.	Residence	1978
Linden Hall	5 South St.	Student Residence	1969
Loyola Hall	42 Tudor Rd.	Student Residence	1956
Lyons Hall	Main Campus	Academic & Admin.	1951

McElroy Commons	Main Campus	Student Services & Admin.	1955
McGuinn Hall	Main Campus	Academic & Admin.	1968
McHugh Forum	Lower Campus	Ice Skating rink	1958
Mill St. Cottage	Newton Campus	Residence	1974
Modular Apartments	Lower Campus	Student Residence	1971
Murray House	292 Hammond St.	Commuter Center	1967
O'Connell Hall	185 Hammond St.	Student Union	1938
Phelps Hall	25 South St.	Student Residence	1969
Philomatheia Hall	86 Commonwealth Ave.	Administrative	1920
Pine Hall	15 South St.	Student Residence	1969
Pine Manor ⁴	-----	Student Residence	—
Putnam Center	885 Centre St.	Academic	1974
Gym (Newton)	885 Centre St.	Gymnasium	1974
Radnor Hall	9 South St.	Student Residence	1969
Rahner House	96 College Road	Residence	1952
Recreation Complex	Lower Campus	Sports	1972
Reservoir Apartments	200 St. Thomas More Dr.	Student Residence	1975
Roberts Center	Main Campus	Academic & Admin. & Gym.	1958
Roncalli Hall	182 Hammond St.	Student Residence	1965
Rubenstein Hall	90 Commonwealth Ave.	Student Residence	1973
Service Building	Main Campus	Admin. & Trade Shops	1948
Shaw House	377 Beacon St.	Student Residence	1962
Commander Shea Field	Beacon St.	Baseball Diamond	1960
South Hall	39-41 South St.	Student Residence	1969
Southwell Hall	38 Commonwealth Ave.	Administrative	1937
St. Gabriel's ⁴	Washington St.	Student Residence	—
St. Mary's Hall ⁵	Main Campus	Jesuit Residence	1917
St. Mary's House	885 Centre St.	Academic & Admin.	1974
St. Thomas More Hall	St. Thomas More Drive	Administrative	1955
Stuart House (Law School)	885 Centre St.	Academic & Admin.	1974
Townhouse	60 Tudor Rd.	Student Residence	1971
Welch Hall	200 Hammond St.	Student Residence	1965
Weston Observatory ⁶	Weston, Ma.	Research & Admin.	1948
Williams Hall	143 Hammond St.	Student Residence	1965
Xavier Hall	44 Tudor Rd.	Student Residence	1956

¹ Rented to Jesuit Community of Boston College.

² Academic & Administrative = classrooms and offices.

³ Student Services in McElroy Commons include bookstore, dining halls, mail room, U.S. Post Office.

⁴ Temporary Rentals for dormitory purposes in 1978-79.

⁵ Owned by the Jesuit Community of Boston College.

⁶ Land rented from the New England Province of the Society of Jesus. Building owned by Boston College.

Summary of Building Use 1977-78

Building Use	Number of Buildings
Student Residences ¹	31
Administrative ¹	11
Administrative & Academic ²	18
Jesuit Residences	7
Miscellaneous use ³	13
TOTAL	80

¹ Keyes North & South = 1
Duchesne East & West = 1
Hillside A & B = 1
Hillside C & D = 1
Modulars = 1

² Administrative and Academic = offices and classrooms
Also includes Weston Observatory.

³ Includes gymnasiums, libraries, student union, etc.

Source: Director of Space Management

1978 — 1979 Dormitory Statistics

CHESTNUT HILL:		Living Units	Students	Staff	Total
Upper Campus					
Cheverus	127 Hammond St.	68	138	3	141
Claver	40 Tudor Road	40	75	3	78
Fenwick	46 Tudor Road	74	139	4	143
Fitzpatrick	137 Hammond Road	73	141	3	144
Gonzaga	149 Hammond Street	80	157	3	160
Kostka	149 Hammond Street	81	159	3	162
Loyola	42 Tudor Road	52	101	2	103
Roncalli	182 Hammond Street	69	134	3	137
Shaw	377 Beacon Street	8	18	1	19
Townhouse	60 Tudor Road	51	98	3	101
Welch	200 Hammond Street	72	150	3	153
Williams	142 Hammond Street	72	138	3	141
Xavier	44 Tudor Road	40	78	2	80
		<u>780</u>	<u>1,526</u>	<u>36</u>	<u>1,562</u>
Lower Campus					
Hillside A	100 Commonwealth Avenue	108	210	3	213
Hillside B	100 Commonwealth Avenue	80	152	2	154
Hillside C (Rubenstein)	90 Commonwealth Avenue	90	174	3	177
Hillside D	90 Commonwealth Avenue	96	192	0	192
Modulars	St. Thomas More Drive	258	498	9	507
Reservoir	200 St. Thomas More Drive	408	792	9	801
		<u>1,040</u>	<u>2,018</u>	<u>26</u>	<u>2,044</u>
NEWTON CAMPUS:					
Cushing	885 Centre Street	64	121	3	124
Duchesne East	885 Centre Street	64	128	3	131
Duchesne West	885 Centre Street	72	127	2	129
Hardey	885 Centre Street	97	176	3	179
Keyes North	885 Centre Street	74	137	4	141
Keyes South	885 Centre Street	55	105	3	108
		<u>426</u>	<u>794</u>	<u>18</u>	<u>812</u>
OFF CAMPUS:					
South Street					
Chestnut Hall	210 Chestnut Hill Avenue	19	34	1	35
Greycliff	2051 Commonwealth Avenue	29	40	2	42
Linden	5 South Street	12	19	1	20
Kirkwood	19 South Street	36	60	2	62
Phelps	25 South Street	12	20	2	22
Pine	15 South Street	12	24	1	25
Radnor	9 South Street	12	20	1	21
South	39-41 South Street	30	50	2	52
		<u>162</u>	<u>267</u>	<u>12</u>	<u>279</u>
Temporary Rentals					
Pine Manor		41	80	2	82
St. Gabriel's, Washington St., Brighton		98	93	5	98
		<u>139</u>	<u>173</u>	<u>7</u>	<u>179</u>
TOTALS		<u>2,547</u>	<u>4,778</u>	<u>99</u>	<u>4,877</u>

Source: Housing Office

Classrooms
1977-78

Building	Number of Classrooms	Stations
Barry	5	490
Campion	14	793
Carney	25	1,042
Cushing	11	768
Devlin	2	298
Fulton	14	1,140
Gasson	18	1,037
Higgins	9	603
Kenny-Cottle Lib.	1	125
Lyons	10	555
McGuinn	17	597
Stuart	9	704
Totals	<u>135</u>	<u>8,152</u>

Source: Director of Space Management

Dining Facilities

Name	Location	Capacity
Eagle's Nest Snack Bar	McElroy Commons	500
Faculty Dining Room	McElroy Commons	175
Kirkwood Cafeteria	Kirkwood Hall	125
Lyons Cafeteria	Lyons Hall	550
McElroy Dining Hall	McElroy Commons	1,000
Newton Campus Cafeteria	Stuart House	300
Newton Campus Snack Bar	Stuart House	200
Snake 'n' Apple	Lower Campus	90
Trustees' Room	McElroy Commons	40
Total Capacity		<u>2,980</u>

Source: Dining Department

Offices
1977-78

Chestnut Hill:		Newton Campus:	
Building	No. of Offices	Building	No. of Offices
Alumni Hall	8	Lawrence House	10
Bapst Library	8	36 College Rd.	9
Botolph House	10	Lyons Hall	75
Brock House	7	McElroy Commons	32
Campion Hall	56	McGuinn Hall	184
Carney Hall	222	Philomatheia Hall	12
Cushing Hall	55	Roberts Center	24
Devlin Hall	40	Rubenstein Hall	12
Fulton Hall	70	Service Building	17
Gasson Hall	36	Southwell Hall	26
Higgins Hall	53	St. Thomas More Hall	65
Hovey House	8		
Hopkins House	11	Subtotal	<u>1,057</u>
90 College Rd.	7		
		Building	No. of Offices
		Barat House	9
		Barry Fine Arts Pav.	25
		Law Faculty Wing	21
		Kenny-Cottle Library	8
		Stuart House	61
		St. Mary's House	5
		Subtotal	<u>129</u>
		Weston Observatory*	17
		Total Offices	<u>1,203</u>

*In addition to 17 offices, Weston Observatory houses 12 laboratories.

Source: Director of Space Management

FINANCE

**JOHNSON
AND
GENTRY**

**FINNEY
AND
MILLER'S**

*Principles
of
Accounting*

**SEVENTH
EDITION**

Prentice-Hall

CORPORATION FINANCE

Statement on Auditing Standards

**College and University
Business Administration**

**FINANCIAL
MANAGEMENT
AND POLICY**

Van Horne

SECOND EDITION

PRENTICE-HALL

AMERICAN COUNCIL ON EDUCATION

AICPA



**NDIKI
LOPEI
OF
KING
ND
NCIAI
BLES**

**Highlights of Financial Operations
For The Five Years Ended June 30, 1978
(Dollars in Millions)**

	1974	1975	1976	1977	1978
Revenues:					
Tuition and Fees	\$27.4	\$30.2	\$33.2	\$36.1	\$39.6
Contracts and Grants	7.1	7.6	8.7	9.4	9.5
Organized Activities	1.2	1.3	2.1	1.5	1.8
Gifts, Investments and Other	1.7	2.1	2.1	2.4	2.6
Auxiliary Enterprises	5.7	7.8	8.7	9.6	10.7
Total Revenue	<u>\$43.1</u>	<u>\$49.0</u>	<u>\$54.8</u>	<u>\$59.0</u>	<u>\$64.2</u>
Expenditures and Transfers:*					
Instruction	\$15.9	\$17.8	\$19.2	\$22.2	\$23.4
Libraries	1.3	1.4	1.6	2.1	2.3
Sponsored Research	2.2	2.3	2.5	3.2	3.1
Student Services	1.7	1.9	2.2	2.6	2.7
Organized Activities	2.1	2.4	2.8	3.0	3.3
Plant Maintenance	2.4	2.9	3.9	4.1	4.8
General Administration	3.6	4.3	5.2	5.5	5.9
Student Aid	4.0	3.9	5.1	5.0	5.4
Auxiliary Enterprises	6.5	8.3	8.9	10.7	11.4
Other Transfers (Net)	3.2	3.5	3.1	.4	1.8
Total Expenditures and Transfers	<u>\$42.9</u>	<u>\$48.7</u>	<u>\$54.5</u>	<u>\$58.8</u>	<u>\$64.1</u>

* Beginning with the fiscal year 1977, a facilities use charge consisting of depreciation and interest on long-term debt was allocated to functional expenditures on the basis of building usage.

Source: Office of the Controller

Tuition and Fees
For The Seven Years Ended June 30, 1979

	1979	1978	1977	1976	1975	1974	1973
Undergraduate Schools							
Arts & Sciences, Education, Management, Nursing	\$3,645	\$3,420	\$3,175	\$2,950	\$2,800	\$2,650	\$2,600
Evening College (per course)	230	220	210	200	190	180	180
Summer Session (per credit hour)	80	75	75	70	70	70	70
Graduate Schools							
Law School	3,810	3,500	3,200	2,950	2,750	2,550	2,450
Social Work	3,645	3,380	3,125	2,900	2,750	2,600	2,500
Arts & Sciences (per credit hour)	113	105	100	95	90	85	75
Management (per credit hour)	113	100	86	80	75	70	60
Room Charge Per Student							
Upper Campus, South Street	950	850	775	750	750	650	650
Modulars	1,150	1,050	950	900	850	750	750
Hillside — 3 bedroom	1,150	1,050	975	950	950	800	—
Hillside — 2 bedroom	1,200	1,100	1,025	1,000	1,000	850	—
Reservoir	1,200	1,100	1,025	1,000	—	—	—
Newton	950	850	775	750	—	—	—
Kilsyth	—	—	—	850	850	650	650
Cleveland Circle	—	—	775	750	750	650	650
Pine Manor	950	—	—	—	—	—	—
St. Gabriel	950	—	—	—	—	—	—
Board Per Student	875	825	750	700	650	600	600
Representative Fees							
Laboratory (Science)	100	100	100	100	100	100	100
Undergraduate Government	24	24	24	20	20	20	20
Graduate Student Association	5	5	5	5	5	5	5
Health	70	70	70	60	60	60	130
Recreation	32	32	32	25	25	25	25

**Boston College
Tuition Restated in 1967 Dollars**

Fiscal Year	Consumer Price Index*	Tuition in Absolute Dollars	Tuition in 1967 Dollars
1967	98.6	\$1,400	\$1,420
1968	101.9	1,600	1,570
1969	107.0	1,600	1,495
1970	113.1	2,000	1,768
1971	119.0	2,240	1,882
1972	123.3	2,500	2,028
1973	128.2	2,600	2,028
1974	139.7	2,650	1,897
1975	155.2	2,800	1,804
1976	166.2	2,950	1,775
1977	175.8	3,175	1,806
1978	187.6	3,420	1,823
1979	201.0**	3,645	1,813

*Fiscal Year Average

**Estimate

Source: Office of the Controller

**Contracts and Grants
Source and Application of Funding
(thousands of dollars)**

SOURCE	1973-74	1974-75	1975-76	1976-77	1977-78
Federal Gov't.	\$6,087	\$6,413	\$7,524	\$7,997	\$8,409
State Gov't.	252	418	366	379	432
Local Gov't.	147	137	134	199	127
Non-Gov't.	596	682	657	837	555
TOTALS	7,082	7,650	8,681	9,412	9,523
APPLICATION					
Sponsored Research	2,885	3,409	3,355	4,113	4,052
Other Sponsored Programs	2,265	2,483	2,379	2,221	2,287
Student Aid	1,932	1,758	2,947	3,078	3,184
TOTALS	\$7,082	\$7,650	\$8,681	\$9,412	\$9,523

Source: Office of the Controller

Summary of Contract and Grant Awards
July 1, 1977 — June 30, 1978

	No. of Awards		Award Total
Biology	4		\$167,800
Chemistry	11		434,600
Economics	5		97,800
School of Education	3	192,600	
Special Education	5	725,300	
Lab of Statistical and Policy Research	4	165,200	1,083,100
Geology	1	38,900	
Weston Observatory	10	1,408,000	
NECEP	7	159,700	1,606,600
History	2		39,700
Laboratory of Psychosocial Studies	1		9,000
Law School	4		247,400
Math Institute	2		26,700
School of Nursing	6		822,600
Philosophy	2		101,200
Physics	8		310,800
Psychology	3		190,700
School of Social Work	10		486,500
SWRRI	3		79,500
Sociology	4		24,000
Space Data Analysis Laboratory	6		1,031,700
Miscellaneous	6		212,000
	<hr/>		
	107		<hr/> \$6,911,700

Source: Office of Research Administration

LIBRARIES



September 1976 — Bapst interior.

Boston College Libraries

Bapst Library	Main Library, Middle Campus
Audiovisual Services	Campion 10
Geophysics Library	Weston Observatory Weston, Ma.
Law Library	Kenny-Cottle Library Newton Campus
Resource Center	Kenny-Cottle Library (Undergraduate) Newton Campus
School of Management Library	Fulton Hall, 2nd Floor
School of Nursing Library	Cushing Hall, 4th Floor
School of Social Work Library	McGuinn Hall, Basement
Science Library	Devlin Hall, Rooms 103-108

Expenditures for Books

Library	1974-75	1975-76	1976-77	1977-78
Bapst	\$315,246	\$350,150	\$371,927	\$344,521
Law	85,000	92,704	108,801	112,084
Management	28,850	29,757	30,710	44,324
Nursing	19,900	19,500	25,090	24,380
Science	58,000	68,080	81,010	104,144
Social Work	5,500	6,300	7,650	10,142
TOTALS	\$512,496	\$566,491	\$625,188	\$639,595

Holdings by Individual Libraries

1978

Library	Volumes	Periodical Subscriptions	Microform Units
Bapst	640,555	2,219	405,635
Law	122,179	710	75,391
School of Mgmt.	60,456	798	13,776
School of Nursing	31,420	601	2,776
Science	55,787	540	9,345
Weston	10,847	45	63
Social Work	20,861	280	118
Resource Center	29,500	0	0
TOTALS	971,605	5,193	507,104

**Volume Acquisitions
(all libraries)**

Year	Number
1969-70	34,206
1970-71	36,262
1971-72	34,758
1972-73	40,835
1973-74	29,945
1974-75	25,770
1975-76	31,091
1976-77	29,095
1977-78	26,095

Source: University Librarian

Circulation Statistics

Year	Student	Faculty	Inter-library loans	Reserve	Total
1971-72	132,368	14,307	1,520	17,848	166,043
1972-73	141,230	10,199	951	19,688	172,068
1973-74	171,321	11,052	2,451	38,137	222,961
1974-75	114,688	10,030	2,576	36,976	164,270
1975-76	113,395	11,577	2,887	96,906	224,765
1976-77	108,364	11,453	3,646	98,118	221,581
1977-78	78,609	12,406	3,420	113,107	207,542

Source: University Librarian

**Audiovisual Services Statistics
1977-1978**

Equipment Utilization*	5,616
TV Studio Productions**	1,654
Film Rental Requests	600
Equipment Purchases	\$10,215

*This represents the number of times audio-visual equipment was borrowed.

**This represents the number of times the studio was used for productions throughout the year.

Source: University Librarian

Boston College Libraries Special Collections

Many rare and valuable materials are included in Special Collections, ranging from medieval manuscripts to modern limited editions, fine bindings, autographed copies, and letters of established authors. Because of their scarcity, value, or fragile nature, access is limited. Below are brief notes on some of the more outstanding collections. Contact Special Collections Librarian for further information.

FRANCIS THOMPSON COLLECTION

This, the most complete collection of Thompsoniana in existence, includes first and rare editions, manuscripts, notebooks, letters, and other material relating to the poet, his times, and his work.

MEYNELL COLLECTION

The most extensive collection in the Western Hemisphere of the works of Wilfrid and Alice Meynell and three of their children — Everard, Viola, and Sir Francis — providing a well-rounded view of this remarkable family of poets, biographers, novelists, essayists, editors and publishers.

PATMORE COLLECTION

Coventry Patmore, poet, essayist, critic, contemporary and close friend of Francis Thompson, is represented here by numerous first editions, manuscripts, articles, book reviews and letters. Among the correspondents are Arnold, Browning, Carlyle, Emerson, Hawthorne, Rossetti, Tennyson and Thackeray.

SPECIAL IRISH COLLECTION

Nearly every aspect of Irish history and literature is covered in this collection. Of special interest are the many papers of Patrick Andrew Collins, president of the Irish Land League, and letters of Jeremiah O'Donovan Rossa, poet, editor and leader of the Fenian and related organizations. Included also is a facsimile, in color, of the famous *Book of Kells*, and complete editions of Malton's *Views of Dublin, 1792-1799*; *The Ordinance Surveys*, *The Irish Bulletin*, and the *Acta Sanctorum Hiberniae*.

JESUITANA

A collection of early and rare works by and about Jesuits. It includes *Lettere e Relazione Orientale*, a series of annual letters from Jesuit missionaries in Indo-China, Tibet, Japan, etc., published in Italy between 1590 and 1661. Most treasured is an original letter of St. Francis Xavier to John III, King of Portugal, dated January 31, 1552.

MERTON COLLECTION

The original typescript and galleys of *The Seven Storey Mountain* are gifts of the author, along with galleys of *The Waters of Siloe*, and his own copy of *The Poetry and Prose of William Blake*. There is an autographed copy of each book published by Merton, and numerous periodicals containing the first printing of poems and essays, many of them uncollected.

WILLIAMS COLLECTION

Approximately 10,000 books and pamphlets are contained in this collection, which provides valuable source material on the ethnology, social and natural history of the West Indies, with special emphasis on Jamaica. Some unusual items of Africana and Judaica are also included.

MORRISSEY COLLECTION OF JAPANESE PRINTS

Of particular value to those interested in the history of Japanese art, this collection contains over 100 prints, paintings and reproductions, Japanese artifacts, and several books. Especially noteworthy are landscape designs of Hiroshige (1797-1858) and Hokusai (1760-1849).

THE BOSTON COLLEGE GUILD OF ST. LUKE OF BOSTON HEALTH ETHICS COLLECTION

Initiated in 1974, this contains books, pamphlets, periodicals, reprints and tapes which concern the ethics of medicine and health care.

RITA P. KELLEHER COLLECTION

In recognition of her twenty-five years of service to the School of Nursing, including twenty years as Dean, this collection contains archival, historical, research, and other significant materials in nursing.

Boston College Libraries Computer Searches

The following data bases are available to the Boston College Community for customized computer searching of the literature in the science and social studies areas. The computer search is an alternative to manual literature search. It is recommended when a literature search involves several concepts or groups of concepts, or when limiting factors are introduced. Request forms and further information is available from the reference staff in each library.

SOCIAL SCIENCES AND HUMANITIES

ASI (American Statistics Index)
America: History and Life
Art Bibliographies Modern
CIS (Congressional Information Service)
CRECORD (Congressional Record Index)
Child Abuse and Neglect
ERIC (RIE, CIJE, AIM/ARM, ECEA)
Historical Abstracts
Language and Language Behavior Abstracts
PAIS (Public Affairs Information Service)
Psychological Abstracts
SOCIAL SCISEARCH
(Social Sciences Citation Index)
Sociological Abstracts

BUSINESS, ECONOMICS

CIN (Chemical Industry Notes)
Federal Index
INFORM (Abstracted Business Information)
MANAGEMENT
PREDICASTS (Bibliographic)
(Market Abstracts, F & S Index, Domestic and
International Statistics, EIS Plants)
PREDICASTS (Computational)

BIOMEDICINE

MEDLINE (AVLINE, CANCERLINE,
CANCERPROJ, CATLINE, CHEMLINE,
CLINPROT, EPILEPSY, MEDLINE and
BACKFILES, TOXLINE)
PNI (Pharmaceutical News Index)

SCIENCES

AGRICOLA (Bibliography of Agriculture)
ASFA (Aquatic Sciences & Fisheries Abstracts)
BIOSIS (Biological Abstracts)
CAB (Commonwealth Agricultural Bureau)
CA Condensates (Chemical Abstracts)
CA Patent Concordance

CHEMNAME

CRIS (Current Research Information Service —
USDA)
GEOREF (Bibliography and Index of Geology)
INSPEC — PHYSICS (Physics Abstracts)
MGA (Meteorological and Geostrophysical
Abstracts)
Oceanic Abstracts
Pollution Abstracts
SCISEARCH (Science Citation Index)
SPIN (Searchable Physics Information Notices)

TECHNOLOGY, ENGINEERING

APTIC (Air Pollution Technical Information
Center)
COMPENDEX (Engineering Index)
ENERGYLINE (Energy Information Abstracts)
ENVIROBIB (Environmental Periodicals
Bibliography)
ENVIROLINE (Environment Abstracts)
Food Science and Technology Abstracts
INSPEC - ELEC/COMP (Electrical and
Electronics Abstracts, Computer and Control
Abstracts)
ISMEC (Mechanical Engineering)
METADEX (Metals Abstracts, Alloys Index)
PAPERCHEM (Institute of Paper Chemistry)
World Aluminum Abstracts

MULTIDISCIPLINARY

CDI (Comprehensive Dissertation Index)
Foundation Directory
Foundation Grants Index
GRANTS
INFORMATION BANK (N.Y. Times)
LISA (Library and Information Science
Abstracts)
NTIS (National Technical Information Service)
SSIE (Smithsonian Science Information)

Special Library Services

INTERLIBRARY LOAN

Interlibrary loan is a service offered to graduate students, faculty and administrators to obtain research materials not available in the Boston College libraries. Request forms and further information is available from the reference staff in each library.

BOSTON LIBRARY CONSORTIUM

The library is a member of the Boston Library Consortium, a group of area libraries which includes Brandeis, Boston University, Tufts, Wellesley, Northeastern, MIT, Massachusetts State Library, Boston Public Library, and University of Massachusetts. Faculty and graduate students may apply for a Consortium borrowers card at the reference department in Bapst. The Consortium maintains a central office at the Boston Public Library, publishes a newsletter, and maintains the following committees: Directors, Acquisitions, Serials, Readers Services, and Cataloging. Further information may be found in the User Guide and the Consortium Handbook, available in all libraries.

UNITED STATES GOVERNMENT DOCUMENTS

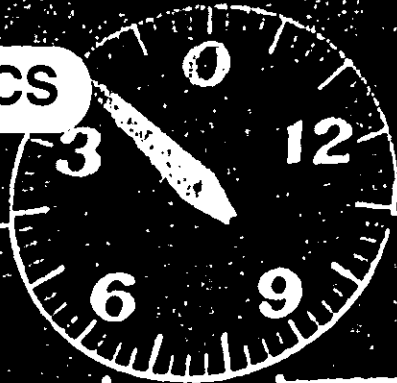
The Boston College Libraries have been a partial federal depository since 1963 and therefore automatically receive United States government publications in specified subject areas. Many of these materials are listed in either the Union Card Catalog located in Bapst Library, or in the annual *Boston College Libraries Periodical List*. A complete record of holdings is kept in the Serials Office in Bapst Library. U.S. government materials not owned by the Boston College Libraries may be found at the Boston Public Library.

Inquiries related to the retrieval and use of these documents should be directed to librarians in the Reference Departments.

NEW ENGLAND LIBRARY INFORMATION NETWORK

Through membership in the New England Library Information Network (NELINET), there is on-line access to publishing, cataloging, and inter-library loan location information from the data bank of the Ohio College Library Center (OCLC), which contains over one million records from the Library of Congress and more than 500 contributing institutions. Other special subject data bases may be accessed through referral service by the reference librarians.

ATHLETICS



VISITORS 0 BOSTON 76

VISITORS BALL

1 DOWN

PLAY BY

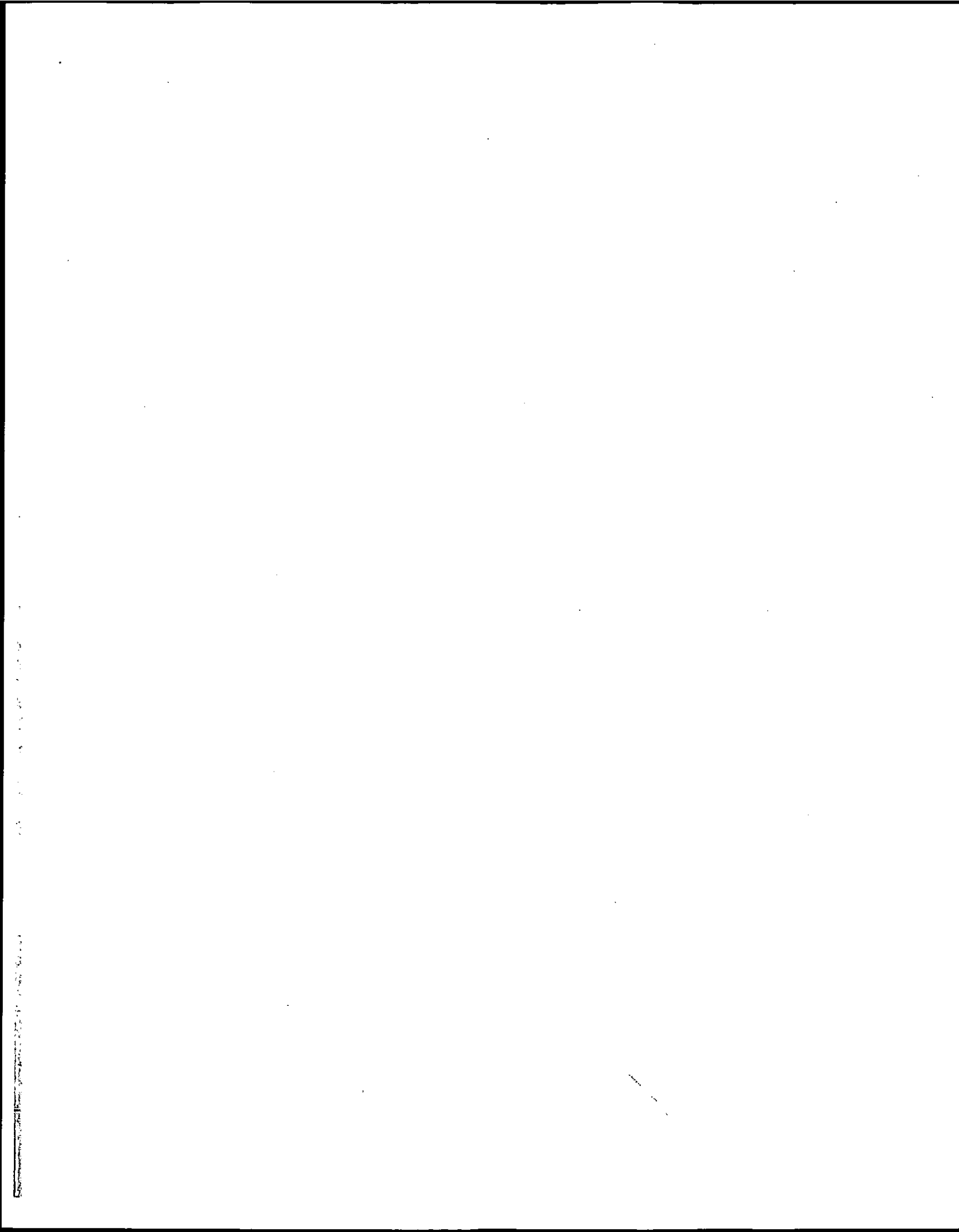
10 YDS. TO GO

PENALTY

0 10 20 30 40 50



B.C.-Holy Cross football game November 26, 1949.



Sports at Boston College

Men's Varsity

Football
Ice Hockey
Basketball
Baseball
Track
Soccer
Lacrosse
Golf
Tennis
Wrestling
Skiing
Sailing
Swimming

Men's Intramurals

Touch Football
Tennis Doubles
Tennis Singles
Racquetball Doubles
Racquetball Singles
Handball
Ice Hockey
Volleyball
Cross Country
Basketball
Squash
Water Basketball
Track
Swimming

Women's Varsity

Volleyball
Basketball
Field Hockey
Swimming
Tennis
Fencing
Golf
Track
Sailing
Skiing

Women's Intramurals

Tennis Singles
Tennis Doubles
Basketball
Racquetball Doubles
Racquetball Singles
Table Tennis
Squash Doubles
Squash Singles
Volleyball

Coed Intramurals

Volleyball
Swimming
Track
Softball
Racquetball Doubles
Squash Doubles
Tennis Doubles

Lessons

Tennis
Fencing
Figure Skating
Gymnastics
Modern Dance
Exercise
Golf
Squash
Swimming

Clubs

Men's Water Polo
Women's Water Polo
Women's Ice Hockey
Women's Lacrosse
Women's Soccer

Unstructured Recreation

Badminton
Baseball
Basketball
Dance
Diving
Physical Exercise
Figure Skating
Football
Golf
Gymnastics
Handball
Jogging
Lacrosse
Racquetball
Soccer
Softball
Squash
Swimming
Tennis
Volleyball
Weightlifting

Varsity Sports Records

	1973-1974	1974-1975	1975-1976	1976-1977	1977-78
Men's Records	W-L-T*	W-L-T	W-L-T	W-L-T	W-L-T
Football	7-4	8-3	7-4	8-3	6-5
Basketball	11-14	21-9	9-17	8-18	15-11
Ice Hockey	22-7-1	16-12	15-13-1	18-11-2	24-10
Wrestling	2-6	8-8	5-5	3-7	5-5
Soccer	3-9-1	6-8-1	4-11-1	6-7-1	6-9-1
Lacrosse	10-1	8-2	7-4	7-4	2-9
Tennis	17-1	4-1	10-5	11-1	11-1
Baseball	17-9-1	13-12	10-13	14-8	14-10-1
Swimming	4-6	8-0	11-0	4-6	7-4
Golf	8-6	7-7	10-4	5-7	7-7
Women's Records					
Basketball	4-6	9-2	7-5	7-6	4-10
Field Hockey	2-2	4-0	7-1	6-3-1	7-3-2
Swimming	8-3	6-2	11-0	12-0	10-0
Tennis	3-3	4-2	11-2	5-1	7-2
Volleyball	0-8	2-8	6-5	7-5	12-7
Lacrosse					5-3

Football Schedules

1978		
Sept. 16	Air Force	6:00 p.m. E.D.T.
Sept. 23	Texas A&M	6:00 p.m. E.D.T.
Sept. 30	Navy	6:00 p.m. E.D.T.
Oct. 7	Pittsburgh	1:30 p.m. E.D.T.
Oct. 14	at Tulane	7:30 p.m. C.D.T.
Nov. 4	at Villanova	1:30 p.m. E.S.T.
Nov. 11	at Army	1:30 p.m. E.S.T.
Nov. 18	Syracuse	1:30 p.m. E.S.T.
Nov. 25	at Massachusetts	1:00 p.m. E.S.T.
Dec. 2	Holy Cross	1:30 p.m. E.S.T.
Dec. 10	Temple at Japan	2:00 p.m. J.S.T.

1979		1980		1981	
Sept. 15	Tennessee	Sept. 13	at Pittsburgh	Sept. 26	at North Carolina
Sept. 22	Villanova	Sept. 20	Stanford	Oct. 3	West Virginia
Sept. 29	at Stanford	Sept. 27	at Villanova	Oct. 10	at Penn State
Oct. 6	at Pittsburgh	Oct. 4	at Navy	Oct. 17	Navy
Oct. 13	West Virginia	Oct. 18	at Florida State	Oct. 24	at Army
Oct. 20	at Miami	Oct. 25	Army	Oct. 31	Pittsburgh
Oct. 27	at Army	Nov. 1	at Air Force	Nov. 7	Villanova
Nov. 3	Tulane	Nov. 15	Syracuse	Nov. 14	at Syracuse
Nov. 17	at Syracuse	Nov. 22	at Mass	Nov. 21	Massachusetts
Nov. 24	Massachusetts	Nov. 29	Holy Cross	Nov. 28	at Holy Cross
Dec. 1	at Holy Cross				

1978-79 Varsity Hockey Schedule

		November			
21	Tuesday	St. Anselm's	20	Saturday	at Boston University (TV-2 pm)
27	Monday	at Brown	24	Wednesday	Yale
		December	25	Thursday	at Providence
1	Friday	at Vermont	28	Sunday	St. Lawrence
5	Tuesday	Northeastern			February
8	Friday	Providence	1	Thursday	Dartmouth
11	Monday	Lowell	5	Monday	at Beanpot Tourna- ment (BC vs. Northeastern, BU vs. Harvard)
16	Saturday	at New Hampshire			at Army
22	Friday	Notre Dame	9	Friday	at Beanpot Finals
30	Saturday	at Dartmouth Tourna- ment	12	Monday	Clarkson
31	Sunday	(BC, Bowdoin, Clarkson, Dartmouth)	17	Saturday	(TV-2 pm)
		January	20	Tuesday	Bowdoin
2	Tuesday	New Hampshire	23	Friday	at Colgate
5	Friday	at Air Force	24	Saturday	at R.P.I.
6	Saturday	at Air Force	27	Tuesday	Boston University
9	Tuesday	Harvard			March
13	Saturday	Cornell	2	Friday	at Princeton
16	Tuesday	at Dartmouth			

1978-79 Basketball Schedule

Monday	November 27	Stonehill
Thursday	November 30	Bentley
Sunday	December 3	at LeMoyne
Sunday	December 10	New Hampshire
Tuesday	December 12	Vermont
Saturday	December 16	at Boston Garden (BC vs. Harvard, Holy Cross vs. Cincinnati)
Thursday	December 21	at St. Mary's (CA)
Saturday	December 23	at U.C.L.A.
Tuesday-Sat.	December 26-30	at Rainbow Classic (Arizona State, BC, Fordham, Harvard, Hawaii, Purdue, Tennessee, Utah)
Saturday	January 6	Northeastern
Wednesday	January 10	at Rhode Island
Friday	January 12	Baltimore
Monday	January 15	St. Anselm's
Wednesday	January 17	Connecticut
Saturday	January 20	Holy Cross
Tuesday	January 23	Villanova
Friday-Sat.	January 26-27	at Colonial Classic (BC, Connecticut, Holy Cross, Massachusetts)
Wednesday	January 31	Providence
Saturday	February 3	Fordham
Tuesday	February 6	at St. John's
Saturday	February 10	at Holy Cross
Tuesday	February 13	Dartmouth
Thursday	February 15	Merrimack
Saturday	February 17	at Georgetown
Wednesday	February 21	Boston University
Saturday	February 24	at Fairfield

Community Use Of Boston College Recreational Facilities

Roberts Center

CYO and Parochial League basketball tournaments
State high school cheerleading championships
Concerts and lectures sponsored by Boston College student groups
Locker room facilities for schoolboy football teams

Jack Ryder Track

"Home" facility for St. Sebastian track team
Practice track used almost daily by Boston State College
"Home" facility for the Greater Boston Track Club

Open for general public use when specially authorized, at times
not conflicting with Boston College team practices.

Commander Shea Field

Eastern Massachusetts school boy baseball championships.

Open for university use at any time not conflicting with
Boston College team practices.

McHugh Forum

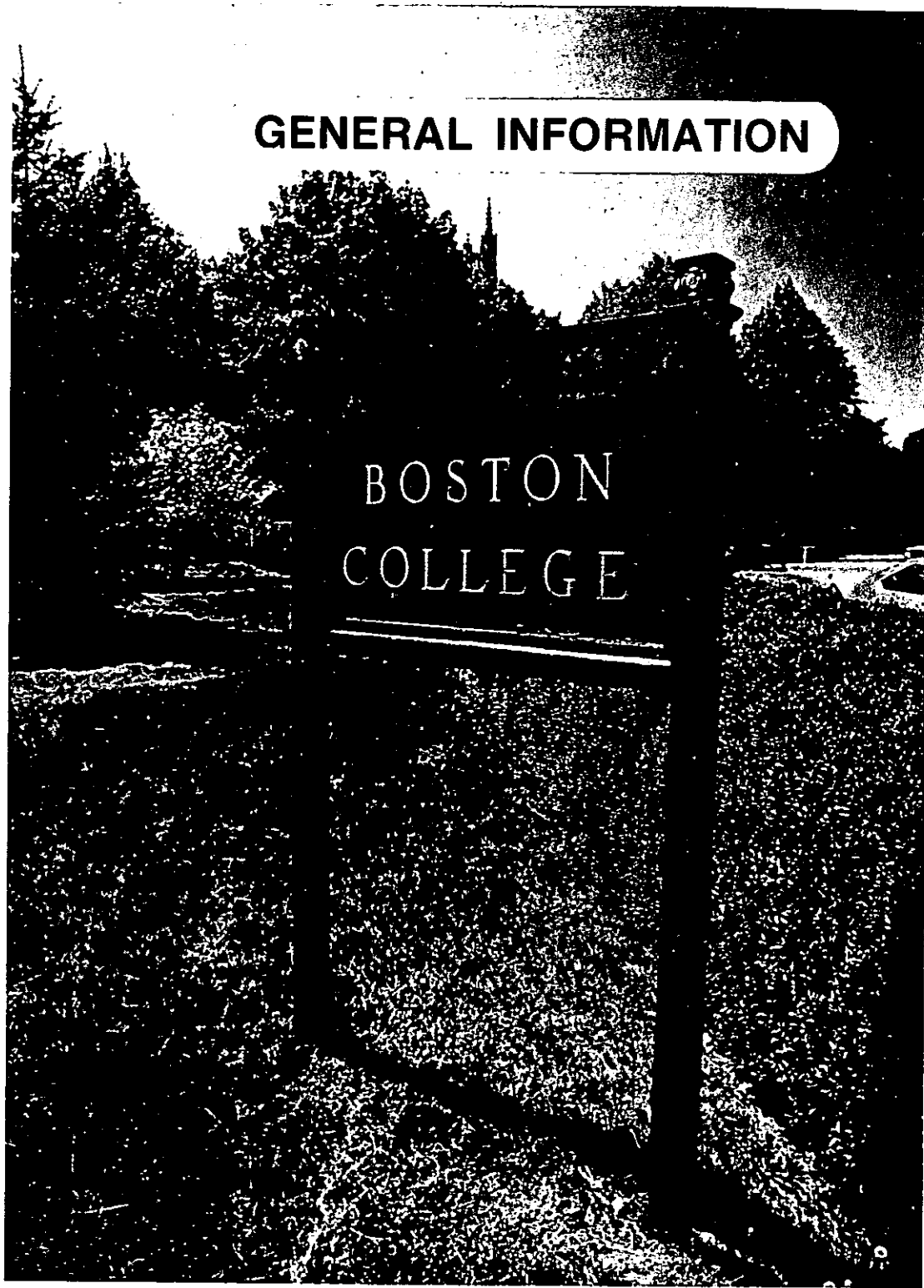
CYO League hockey games
"Home" facility for Boston College High, Catholic Memorial and Don
Bosco hockey teams
Greater Boston Bantam League games
Site of 1974 New England PeeWee championships
Chestnut Hill Figure Skating Club meets twice weekly
CYO Color Guard annual competition
Site of a weekend-long antique show and flea market run by local
group each fall

Open ice time daily from 12:00 to 6:00 a.m. General ice skating five
nights per week. Open to students. Season memberships available
at \$30 per person, \$75 per family, \$25 per family with a 50c fee for
each use, or a straight fee collected from those not holding a
membership.

Alumni Stadium

Boston College High School Memorial Thanksgiving game
Eastern Massachusetts Schoolboy Superbowl
CYO Drum and Bugle Corps annual competition
Open for university use at any time not conflicting with
Boston College team practices.

GENERAL INFORMATION



May 1974 — sign at Comm. Ave. entrance.

Types of Degrees Conferred at Boston College

Bachelor of Arts (A.B.)
Bachelor of Science (B.S.)
Master of Arts (A.M.)
Master of Arts in Teaching (M.A.T.)
Master of Business Administration (M.B.A.)
Master of Education (M.Ed.)
Master of Science (M.S.)
Master of Science in Teaching (M.S.T.)
Master of Social Planning (M.S.P.)
Master of Social Work (M.S.W.)
Master of Theology (Th.M.)
Certificate of Advanced Educational Specialization (C.A.E.S.)
Doctor of Philosophy (Ph.D.)
Doctor of Law (J.D.)
Doctor of Education (D.Ed.)

Source: *Boston College Bulletin*

Accreditation and Memberships of the University

ACCREDITING AGENCIES

American Assembly of Collegiate Schools of Business
American Bar Association
American Chemical Society
Association of American Law Schools
Board of Regents of the University of New York
Council on Social Work Education
National Association of State Directors of Teacher Education
Interstate Certification Compact
National Council of Accreditation of Teacher Education
National League of Nursing
New England Association of Schools and Colleges

ASSOCIATION MEMBERSHIPS*

American Association of Colleges of Nursing	College Entrance Examination Board
American Association of Colleges for Teacher Education	Conference of Deans of Schools of Social Work
American Association of Comparative Law	Council of Graduate Schools
American Association for Higher Education	International Association of Universities
American Association of University Women	International Association of Catholic Universities
American Council on Education	National Association of College and University Business Officers
American Public Welfare Association	National Association of Social Workers
Association of American Colleges	National Catholic Education Association
Association of Collegiate Schools of Planning	National Conference of Catholic Charities
Association of Jesuit Colleges and Universities	National Conference on Social Welfare
Association for Continuing Higher Education	National League for Nursing
Association of Urban Universities	North American Association of Summer Sessions
Boston Library Consortium	Phi Beta Kappa**
Boston Theological Institute	Order of the Coif**

* The above listing is meant only to be representative of the major types of memberships to which the University belongs.

** A complete listing of honor societies to which the University belongs may be found in the University Student Guide.

Founder of Boston College

Rev. John McElroy, S.J. Pastor,
Immaculate Conception Parish, Boston
1861-1863

Presidents of Boston College

1. John Bapst, S.J.	1863-1869	13. Thomas I. Gasson, S.J.	1907-1914
2. Robert W. Brady, S.J.	1869-1870	14. Charles W. Lyons, S.J.	1914-1919
3. Robert Fulton, S.J.	1870-1880	15. William Devlin, S.J.	1919-1925
4. Jeremiah O'Conner, S.J.	1880-1884	16. James H. Dolan, S.J.	1925-1932
5. Edward V. Boursaud, S.J.	1884-1887	17. Louis J. Gallagher, S.J.	1932-1937
6. Thomas H. Stack, S.J.	1887	18. William J. McGarry, S.J.	1937-1939
7. Nicholas Russo, S.J.	1887-1888	19. William J. Murphy, S.J.	1939-1945
8. Robert Fulton, S.J.	1888-1891	20. William L. Keleher, S.J.	1945-1951
9. Edward I. Devitt, S.J.	1891-1894	21. Joseph R. N. Maxwell, S.J.	1951-1957
10. Timothy Brosnahan, S.J.	1894-1898	22. Michael P. Walsh, S.J.	1957-1968
11. W. G. Read Mullan, S.J.	1898-1903	23. W. Seavey Joyce, S.J.	1968-1972
12. William F. Gannon, S.J.	1903-1907	24. J. Donald Monan, S.J.	1972-

Honorary Degrees Awarded by Boston College 1952-1977

1952

Gregory Peter XV Cardinal Agagianian, LL.D. (January 14, 1952)
James B. Connolly, Litt.D.
James M. O'Neill, LL.D.
Most Rev. Thomas F. Markham, LL.D.*
Rt. Rev. Thomas J. Riley, LL.D.
James J. Ronan, LL.D.

1953

Dorothy L. Book, LL.D.
Most Rev. James L. Connolly, LL.D.
Clifford J. Laube, LL.D.
Francis J. O'Halloran, A.M.
Most Rev. Leonard J. Raymond, LL.D.*
Alex Ross, A.M.
John C. H. Wu, LL.D.

1954

Edward H. Chamberlin, LL.D.
John J. Hearne, LL.D.*
James W. Manary, Sc.D.
Thomas A. Printon, LL.D.
Ven. Bro. William Sheehan, C.F.X., LL.D.
Most Rev. Christopher J. Weldon, LL.D.
Louis de Wohl, Litt.D.
William J. O'Keefe, LL.D. (November 21, 1954)

* Commencement Speaker

1955

Fred J. Driscoll, LL.D.
Christian A. Herter, LL.D.
Edward A. Hogan, Jr., LL.D.*
Rear Adm. Bartholomew W. Hogan, Sc.D.
John B. Hynes, LL.D.
His Beatitude Maximus IV, LL.D. (August 23, 1955)
Valerian Cardinal Gracias, LL.D.
Russel Kirk, Litt.D.
Edward A. Sullivan, LL.D.

1956

Bartholomew A. Brickley, LL.D.
Peter J. W. Debye, Sc.D.
Most Rev. Frederick A. Donaghy, LL.D.
John F. Kennedy, LL.D.*
John W. King, LL.D.
Charles Munch, D.Mus.
Edward F. Williams, LL.D.

1957

Wallace E. Carroll, LL.D.
Arthur J. Kelly, LL.D.
Augustus C. Long, LL.D.*
Adrian O'Keefe, LL.D.
Very Rev. Msgr. Patrick W. Skehan, LL.D.
Nils Y. Wessell, LL.D.

1958

Most Rev. Amleto G. Cicognani, LL.D. (April 21, 1958)

Carl J. Gilbert, LL.D.
 Paul Horgan, Litt.D.
 Barnaby C. Keeney, LL.D.*
 Henry M. Leen, LL.D.
 Jacques Maritain, LL.D.
 Raissa Maritain, LL.D.
 Harold Marston Morse, D.Sc.
 Rev. John B. Sheerin, C.S.P., LL.D.
 Francis Cardinal Spellman, LL.D.
 (December 8, 1958)

1959

His Excellency Sean T. O'Kelly, LL.D. (March 22, 1959)

Ernest Henderson, LL.D.
 Rev. John LaFarge, S.J., LL.D.
 Henry Cabot Lodge, LL.D.
 George Meany, LL.D.
 Carlos P. Romulo, LL.D.*
 Helen C. White, Litt.D.

1960

Marian Anderson, D.Mus.
 J. Peter Grace, LL.D.
 Caryl P. Haskins, LL.D.
 Robert F. Kennedy, LL.D.
 Charles Malik, LL.D.*
 Most. Rev. Russell J. McVinney, LL.D.
 Samuel Eliot Morison, LL.D.
 Rt. Rev. Matthew P. Stapleton, LL.D.
 Rev. Henry M. Brock, S.J., D.Sc. (October 12, 1960)

1961

Allen W. Dulles, LL.D.
 Anthony Julian, LL.D.
 Robert D. Murphy, LL.D.*
 Louis R. Perini, LL.D.
 Abraham Ribicoff, LL.D.
 Rt. Rev. Robert J. Sennott, LL.D.
 Edward Teller, LL.D.

1962

Detlev W. Bronk, D.Sc.*
 Ralph J. Bunche, LL.D.
 Christopher J. Duncan, LL.D.
 Sir Alec Guinness, D.F.A.
 Rt. Rev. Francis J. Lally, Litt.D.
 Ralph Lowell, LL.D.
 Phyllis McGinley, Litt.D.
 Perry G. Miller, Litt.D.

1963

Augustin Cardinal Bea, S.J., J.U.D. (March 26, 1963)
 Rev. Edward B. Bunn, S.J., LL.D. (April 20, 1963)
 Lady Barbara Ward Jackson, Litt.D. (April 20, 1963)

* Commencement Speaker

Nathan Marsh Pusey, L.H.D. (April 20, 1963)
 Bruce Catton, Litt.D.
 Anthony Joseph Celebrezze, LL.D.*
 Arthur Joseph Goldberg, LL.D.
 John Jay McCloy, LL.D.
 James Barrett Reston, LL.D.
 Rt. Rev. John Joseph Ryan, L.H.D.
 Jose Luis Sert, Litt.D.
 Joseph Leo Sweeney, LL.D.
 Robert Clifton Weaver, LL.D.
 James Edwin Webb, D.Sc.

1964

John Coleman Bennett, LL.D.
 Henri Maurice Peyre, LL.D.
 Most Rev. Ernest John Primeau, LL.D.
 Sidney R. Rabb, L.H.D.
 Paul Anthony Samuelson, LL.D.
 Rev. Joseph L. Shea, S.J., LL.D.
 Robert Sargent Shriver, Jr., LL.D.*
 Mary Sullivan Stanton, LL.D.

1965

John P. Birmingham, LL.D.
 Robert McAfee Brown, LL.D.
 J. N. Douglas Bush, Litt.D.
 Victor L. Butterfield, L.H.D.
 John T. Connor, LL.D.
 Edith Green, LL.D.
 Rev. John Courtney Murray, S.J., L.H.D.*
 Rt. Rev. Lawrence J. Riley, LL.D.
 Alan T. Waterman, D.Sc.

1966

Most Rev. John W. Comber, M.M., L.H.D.
 Edward F. Gilday, L.H.D.
 Edward M. Kennedy, LL.D.
 Francis Keppel, LL.D.*
 Mother Eleanor M. O'Byrne, R.S.C.J., LL.D.
 Stephen P. Mugar, LL.D.
 Abram L. Sachar, L.H.D.
 Rene Wellek, Litt.D.
 George Wells Beadle, D.Sc. (November 12, 1966)
 William Bosworth Castle, M.D., L.H.D. (November 12, 1966)
 Donald Frederick Hornig, LL.D. (November 12, 1966)
 James Alfred Van Allen, D.Sc. (November 12, 1966)

1967

Sarah Caldwell, Litt.D.
 Richard Palmer Chapman, LL.D.
 Very Rev. John Francis Fitzgerald, C.S.P., L.H.D.
 John Kenneth Galbraith, LL.D.
 John William Gardner, LL.D.*
 Everett Cherrington Hughes, LL.D.
 John Anthony Volpe, LL.D.

1968

Kingman Brewster, Jr., LL.D.*
 Rev. Henri de Lubac, S.J., L.H.D.
 Erwin N. Griswold, LL.D.
 Rita P. Kelleher, D.Sc.
 Most Rev. John J. McEleney, S.J., LL.D.
 Cornelius W. Owens, LL.D.
 James J. Shea, Sr., LL.D.
 Roger J. Traynor, LL.D.

1969

R. Buckminster Fuller, D.F.A.*
 Katharine Graham, D.Journ.
 Philip J. McNiff, L.H.D.
 Talcott Parsons, D.S.S.
 A. Philip Randolph, LL.D.
 Henry Lee Shattuck, D.C.S.
 Terence Cardinal Cooke, LL.D.

1970

James Edward Allen, Jr., D.Sc.Ed.
 Rt. Rev. John Melville Burgess, LL.D.
 Joan Ganz Cooney, D.Sc.Ed.
 Sterling Dow, L.H.D.
 Hartford Nelson Gunn, Jr., L.H.D.
 Rev. Bernard Joseph Francis Lonergan, S.J.,
 Hist.Phil.D.
 Elliot Norton, L.H.D.
 Perry Townsend Rathbone, D.F.A.
 Earl Warren, D.Sc.L.*

1971

Walter Jackson Bate, H.D.
 Andrew Felton Brimmer, S.S.D.
 Rev. Msgr. George William Casey, Litt.D.
 Mircea Eliade, R.D.
 Eli Goldston, L.L.D.
 Elma Lewis, D.F.A.
 Michael Joseph Mansfield, LL.D.*
 William James McGill, S.S.D.
 Most Rev. Humberto Sousa Medeiros, S.T.D.
 Walter George Muelder, D.Sc.T.
 Leverett Saltonstall, LL.D.

1972

Mary Ingraham Bunting, D.Sc.
 Arthur Fiedler, D.Mus.
 Northrop Frye, L.H.D.
 John James Griffin, D.C.S.
 Sir William Arthur Lewis, L.H.D.
 Louis Martin Lyons, D.Journ.
 Rev. John Anthony McCarthy, S.J., Litt.D.
 Hildegard Elizabeth Peplau, D.N.S.
 Adlai Ewing Stevenson, III, LL.D.*
 Walter Edward Washington, LL.D.

1973

A. J. Antoon, L.H.D.
 Harold Bloom, L.H.D.
 Fred J. Borch, D.B.A.
 Vernon E. Jordan, Jr., LL.D.
 John George Kemeny, D.Sc.*
 Daniel Linehan, S.J., D.Sc.
 Thomas Philip O'Neill, Jr., LL.D.

1974

Soia Mentschikoff, LL.D.*
 Thomas L. Phillips, D.B.A.
 Carl Thomas Rowan, L.H.D.
 Thomas Paul Salmon, LL.D.
 Sir Ronald Syme, L.H.D.
 Henry Bradford Washburn, Jr., L.H.D.

1975

Malnea A. Cass, L.H.D.
 The Honorable Silvio O. Conte, LL.D.
 John Thomas Dunlop, LL.D.
 Rev. Francis J. Gilday, S.J., L.H.D.
 Edward Lewis Hirsh, L.H.D.
 Paul Ricoeur, L.H.D.*
 Vincent Charles Ziegler, D.B.A.

Bicentennial Convocation
Sept. 28, 1975

Thomas Joseph Galligan, Jr., D.B.A.
 Oscar Handlin, L.H.D.
 William J. Harrington, M.D., D.Sc.
 Edward Hirsch Levi, LL.D.
 Rev. Michael Patrick Walsh, S.J., L.H.D.
 Mary Lou Williams, D.A.

1976

Abram Thurlow Collier, D.B.A.
 John Hope Franklin, L.H.D.
 Rev. Martin Patrick Harney, S.J., H.D.
 Mildred Fay Jefferson, D.Sc.
 Asa Smallidge Knowles, D.Sc.Ed.
 Joseph Francis Maguire, LL.D.
 Daniel Patrick Moynihan, LL.D.*

1977

Rev. Raymond Edward Brown, Litt.D.*
 Gerhard D. Bleicken, LL.D.
 Alice Bourneuf, D.Sc.
 James F. McDonough, M.D., D.Sc.
 Maria Tallchief Paschen, D.A.
 Michael Joseph Walsh, Litt.D.

1978

Bruno Bettelheim, Litt.D.
 Rev. Charles F. Donovan, S.J., L.H.D.
 Charles D. Ferris, LL.D.*
 Marvin E. Frankel, LL.D.
 John William McDevitt, LL.D.
 Leo Perlis, D.S.S.

* Commencement Speaker

Source: Secretary of the University

Academic Department Locations

Accounting Department	Fulton 100
Administrative Sciences Department	Fulton 301
Arts and Sciences	Gasson 103
Biology Department	Higgins 321
Center for East Europe, Russia & Asia	Carney 201A
Chemistry Department	Devlin 223B
Classical Studies Department	Carney 122
Computer Sciences Department	Fulton 406
Counselor Education and Counseling Psychology Program	McGuinn 314
Early Childhood Program	Campion 200C
Counselors:	
Arts and Sciences	Gasson 108
Education	Campion 301
Management	Fulton 205
Nursing	Cushing 103
Curriculum and Instruction Program:	
Director	Campion 219
Elementary	Campion 307
Media Specialist	Campion 10
Reading Specialist	Campion 312
Science Education	Campion 219
Secondary Education	Campion 115
Economics Department	Carney 132
Education	Campion 100-104A
Educational Administration and Supervision Program	McGuinn 604
Educational Research, Measurement and Evaluation Program	Campion 311
English Department	Carney 446
Evening College	Fulton 317
Finance Department	Fulton 310
Fine Arts Department	Barry Pavilion, Newton Campus
General Management Program	Fulton 214B
Geology and Geophysics Department	Devlin 209
Germanic Studies Department	Carney 325
Graduate Arts and Sciences	McGuinn 221A
Higher Education Program	Campion 214
History Department	Carney 116
History and Philosophy of Education Program	Campion 313
Honor Programs:	
Arts and Sciences	Gasson 111
Education	Campion 104A
Management	Fulton 100
Law School	Stuart, Newton Campus
Law Department	Fulton 403
Management Institute	Fulton 405
Marketing Department	Fulton 303
Mathematics Department	Carney 317
Music Program	St. Mary's Hall, Newton Campus
Nursing	Cushing 203
Organizational Studies Program	Fulton 216
Philosophy Department	Carney 272
Physics Department	Higgins 355
Political Science Department	McGuinn 200
Psychology Department	McGuinn 349
Institute of Religious Education and Pastoral Ministry	Lyons 215
Romance Languages and Literatures Department	Carney 333

Slavic and Eastern Languages Department
Social Work Graduate School
Sociology Department
Special Education and Rehabilitation Program
Speech Communication and Theatre
Summer Session
Theology Department

Carney 236
McGuinn 132
McGuinn 416
McGuinn B15
McGuinn 500
McGuinn 401
Carney 418

Source: Registrar

Sources

Admissions Office
Alumni Association
Controller's Office
Dean of Faculties
Deans' Offices
Development Office
Dining Department
Director of Physical Plant
Director of Space Management
Director of Sports Information
Financial Aid Office
Health Services Office
Housing Office
Office of Research Administration
Office of Student Programs and Resources
Office of Student Loans and Student Accounts
Personnel Office
President's Office
Registrar
Secretary of the University
Summer Session Office
University Academic Senate
University Librarian
Vice President, Financial and Business Affairs

Bibliography

AAUP Bulletin - August 1977
"A Guide to the Campus", 1976
Boston College Bulletin-Undergraduate Admissions Information, September, 1978
Boston College Bulletin-University General Catalog, 1977-78 and 1978-79
Boston College Information for New Students, 1977-78
Boston College Student Guide, 1978-79

*N.B. Sources are responsible for the accuracy and completeness
of data submitted for publication*

ACADEMIC CALENDAR

First Semester

1978-79		1979-80
Sept. 3-5	Freshman Orientation	Sept. 2-4
Sept. 5-6	Registration for students not pre-registered	Sept. 4-5
Sept. 7	Classes begin	Sept. 5
Sept. 8	Faculty Convocation	Sept. 7
Oct. 9	Columbus Day - No Classes	Oct. 8
	Veteran's Day - No Classes	Nov. 12
Nov. 22	Thanksgiving Holidays begin at noon	Nov. 21
Dec. 11-12	Study Days - No Classes	Dec. 11-12
Dec. 13-19	Term Examinations	Dec. 13-19
Dec. 20-		Dec. 20-
Jan. 15	Holidays	Jan. 11

Second Semester

Jan. 16	Classes Begin	Jan. 14
	Martin Luther King Day - No Classes	Jan. 15
Feb. 19-23	Winter Vacation	Feb. 18-22
April 12-16	Holy Thursday - Easter Monday: Easter Recess	April 3-7
April 16	Patriots' Day - No Classes	April 21
April 30- May 1	Study Days - No Classes	April 29-30
May 2-8	Term Examinations	May 1-7
May 21	Monday: Commencement	May 19

