

**BOSTON COLLEGE
FACT BOOK
1976**



BOSTON COLLEGE
TUITION FEES
PER YEAR OR SEMESTER YEAR

PERCENTAGE INCREASE 1965-66 to 1976-77: 126.8%

PERCENTAGE INCREASE PER YEAR (A&S):

SCHOOL	1978/79	1977/78	PERCENTAGE INCREASE PER YEAR (A&S):										
			7.6%	5.4%	5.7%	1.9%	4%	11.6%	12%	25%	-	14.3%	-
	1976/77	1975/76	1974/5	1973/4	1972/3	1971/2	1970/71	1969/70	1968/9	1967/8	1966/7	1965/6	
Arts & Sciences		\$3,175.	\$2,950.	\$2,800.	\$2,650.	\$2,600.	\$2,500.	\$2,240.	\$2,000.	\$1,600.	\$1,600.	\$1,400.	\$1,400.
Graduate Arts & Sciences /hr.		100.	95.	90.	85.	75.	70.	70.	60.	50.	50.	45.	45.
Summer Session /hr.		75.	70.	70.	70.	70.	70.	60.	50.	45.	45.	40.	40.
Law School		3,200.	2,950.	2,750.	2,550.	2,450.	2,350.	2,240.	2,000.	1,700.	1,600.	1,500.	1,400.
Evening College (A)		210.	200.	190.	45.	45.	45.	45.	45.	35.	35.	30.	30.
Social Work		3,125.	2,900.	2,750.	2,600.	2,500.	2,350.	2,240.	2,000.	1,700.	1,500.	1,500.	1,350.
Management		3,175.	2,950.	2,800.	2,650.	2,600.	2,500.	2,240.	2,000.	1,600.	1,600.	1,400.	1,400.
Nursing		3,175.	2,950.	2,800.	2,650.	2,600.	2,500.	2,240.	2,000.	1,600.	1,600.	1,400.	1,400.
Education		3,175.	2,950.	2,800.	2,650.	2,600.	2,500.	2,240.	2,000.	1,600.	1,600.	1,400.	1,400.
Graduate Management (A)		86.	80.	225.	70.	60.	60.	60.	60.	55.	55.	50.	50.
<u>ROOM</u>													
Reservoir		1,025.	1,000.										
Kilsyth		--	850.										
Upper Campus, South Street, Cleveland Circle		775.	750.	750.	650.	650.	650.	680.	380.	380.	380.	350.	350.
Modulars & Kilsyth		950.	900.	850.	750.	750.							
Hillside - 3 bedroom		975.	950.	950.	800.								
Hillside - 2 bedroom		1,025.	1,000.	1,000.	850.								
Newton		775.	750.										
<u>BOARD</u>		750.	700.	650.	600.	600.	600.	600.	600.	600.	600.	600.	600.
Laboratory Fees		100.	100.	100.	100.	100.	50.	50.	50.	50.	50.	50.	50.
Undergraduate Government Fee		24.	20.	20.	20.	20.	20.	20.	18.	10.	5.		
Grad. Student Assoc. Fee		5.	5.	5.	5.	5.							
Health Fee		70.	60.	60.	60.	130.	115.	70.	70.	70.	70.		
Recreation Fee		32.	25.	25.	25.	25.	10.						

(A) = per course

ACADEMIC CALENDAR

1976-77

First Semester

1977-78

Sept. 5-8	Sunday-Wednesday: Freshman Orientation	Sept. 3-6
Sept. 7-8	Tuesday-Wednesday: Registration for students not pre-registered	Sept. 6-7
Sept. 8	Wednesday: Classes begin	Sept. 7
Sept. 10	Faculty Convocation	Sept. 6
Oct. 11	Monday: Columbus Day-No Classes	Oct. 10
Nov. 11	Veterans' Day-No Classes	Nov. 11
Nov. 24	Wednesday: Thanksgiving Holidays begin at noon.	Nov. 23
Dec. 13-14	Monday-Tuesday: Study Days-No Classes	Dec. 12-13
Dec. 15-21	Wednesday-Tuesday: Term Examinations	Dec. 14-20
Dec. 22- Jan. 14	Holidays	Dec. 21- Jan. 6

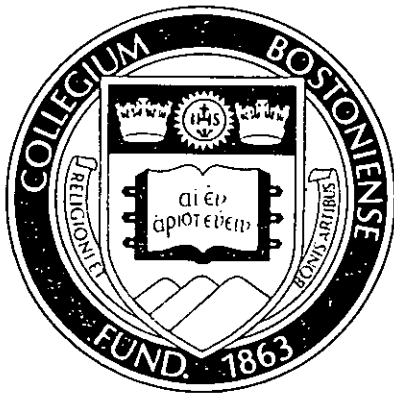
Second Semester

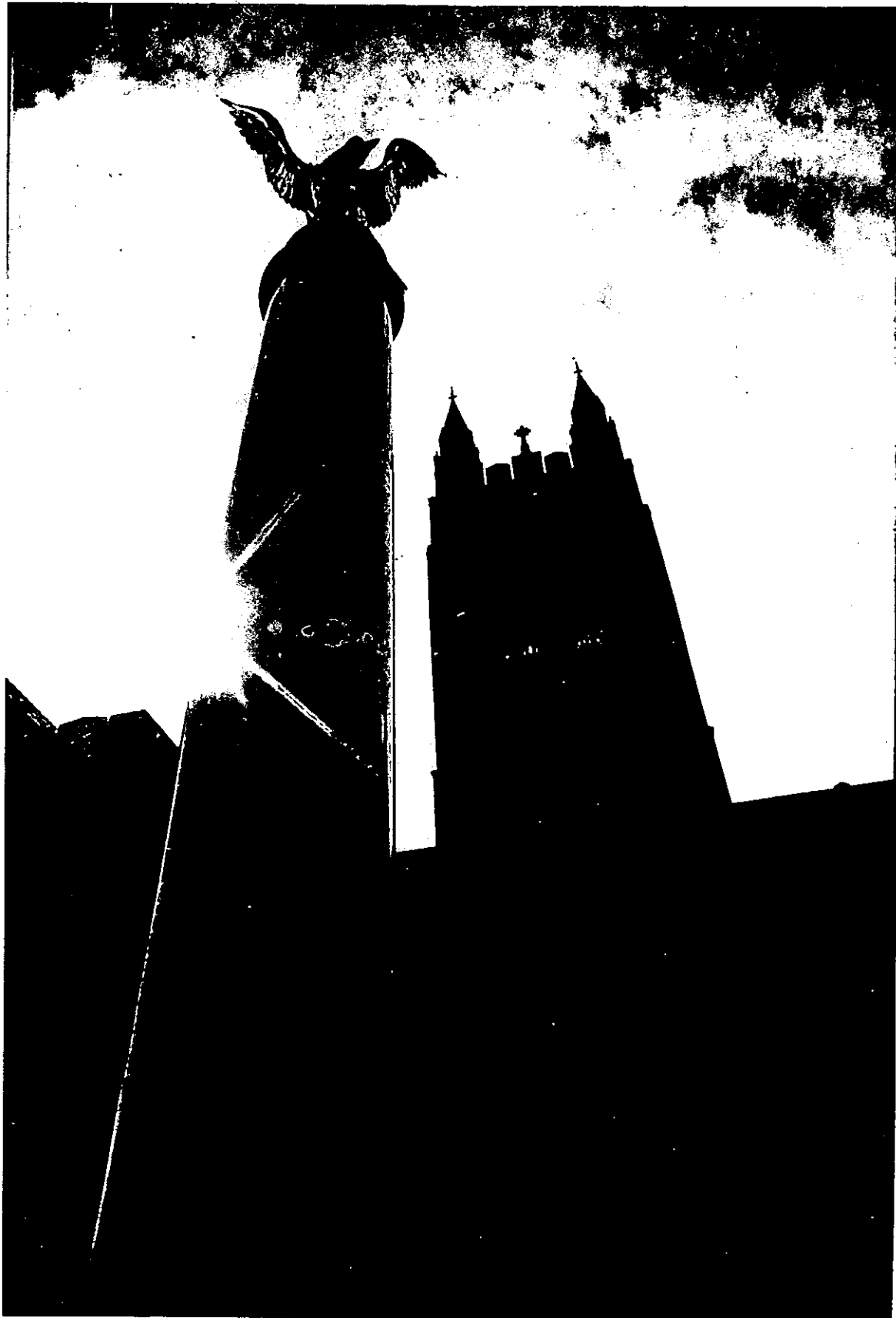
Jan. 17	Monday: Classes begin	Jan. 9
—	Monday: Martin Luther King Day-No Classes	Jan. 16
Feb. 21-25	Monday-Friday: Winter Vacation	Feb. 20-24
March 18	Friday: No Classes	—
Apr. 7-11	Holy Thursday-Easter Monday: No Classes	March 23-27
April 18	Monday: Patriots' Day-No Classes	April 17
May 2-3	Monday-Tuesday: Study Days-No Classes	May 1-2
May 4-10	Wednesday-Tuesday: Term Examinations	May 3-9
May 23	Monday: Commencement	May 22

Source: Office of the Dean of Faculties

Judy Kessene

BOSTON COLLEGE FACT BOOK 1976





PREFACE

While there has been no significant departure from the familiar style, the contents of the 1976 Boston College Fact Book have been expanded to incorporate information requested by readers and contributors.

Institutional statistics are needed for many purposes - such as government proposals, accreditation reports, and financial planning - and our objective is to provide in a single, convenient reference document the vital statistics of Boston College, plus generally interesting and useful information. Figures are the latest available, and wherever possible, both historical and current data have been checked against secondary sources to assure accuracy and consistency. When necessary, footnotes are used to explain quantitative anomalies or computational eccentricities.

The interest, cooperation, and suggestions of our readers and contributors have enabled us to produce a more comprehensive Fact Book, and with their continued assistance, we hope to further improve and enlarge subsequent editions. Special thanks to Assistant Editor Kim Watson for her painstaking attention to the detail and design of every page.

Judith Jack, Editor

Office of the Vice President
Financial and Business Affairs

September 1, 1976

BOSTON COLLEGE FACT BOOK

Table of Contents

	<u>Page</u>
Academic Calendar	<i>Inside Front Cover</i>
Preface	i
Table of Contents	ii
Boston College Then and Now	vi
Boston College Data Summary	viii

I. ADMINISTRATION AND FACULTY

Chart of Administration	3
Board of Trustees	4
Officers of the University.	6
University Administrators	7
Deans	9
Department Chairmen	9
Non-Faculty Personnel	11
Faculty and Non-Faculty Personnel - Geographic Distribution	12
Faculty:	
-by School and Rank	14
-by School and Sex.	15
-by School and Tenure Status.	16
-by Highest Earned Degree and Rank.	17
-by Highest Earned Degree and Sex	18
-by Rank and Sex.	19
-Full-Time Equivalent by School	20
-Average Compensation by Rank	21
University Academic Senate:	
-Membership Classification.	22
-Membership List - 1975-76.	23

	<u>Page</u>
 II. STUDENTS	
Freshman Applications and Enrollment.	26
SAT Averages by Class	27
Class of 1979, Geographic Distribution.	28
Undergraduate Transfer Students:	
-by Year and Sex.	29
-by Type of Previous Institution.	29
Enrollment:	
-Graduate and Undergraduate, Full- and Part-Time.	30
-Undergraduate, Day and Evening, and Graduate	31
-Undergraduate, by School	32
-Graduate, by School.	33
-Graduate, by Degree Program and Discipline	34
-Undergraduate and Graduate, by Sex	35
-Full-Time Equivalent	37
-Evening College.	38
-Summer Session	39
-International Students	40
-Veterans	42
Undergraduate Degrees Conferred:	
-by Degree and Number of Majors	43
-by Major	44
-by School and by Major	46
Undergraduate and Graduate Degrees Conferred, by Degree and by Sex.	48
Undergraduate Financial Aid:	
-Dollars.	50
-Number of Students	51
Boston College Health Services.	52

	<u>Page</u>
III. ALUMNI	
Geographic Analysis by State.	54
New England	55
Boston College Alumni Activities.	56
Boston College Alumni Clubs	57
New Heights Campaign Leadership	58
IV. FACILITIES	
Map - Boston College & Vicinity	62
Boston College Properties - Summary	63
Map - Chestnut Hill Campus.	64
Map - Newton Campus	65
Boston College Properties	66
Summary of Building Use	68
Buildings - Location and Primary Use.	69
Dormitories	72
Classrooms.	74
Offices	75
Dining Facilities	76
V. FINANCE	
Revenues and Expenditures	79
Contracts and Grants, by Source of Funding.	80
Summary of Contract and Grant Awards.	81
Sample of Sponsored Programs.	82
Purchasing - Documents Processed.	83
VI. LIBRARIES	
Libraries and Library Hours	86
Holdings by Individual Libraries.	87
Expenditures for Books.	88

	<u>Page</u>
Volume Acquisitions	89
Circulation Statistics.	89
Special Collections	90
Data Bases Available	92
VII. ATHLETICS	
Sports at Boston College.	94
Varsity Sports Records.	96
Varsity Football Schedules - 1976-78.	97
Varsity Hockey Schedule - 1976-77	98
Varsity Basketball Schedule - 1976-77	99
Community Use of Recreational Facilities.	100
Community Use of Recreation Complex.	101
VIII. GENERAL INFORMATION	
Types of Degrees Conferred.	104
Accreditation	105
Founder and Presidents.	106
Honorary Degrees Awarded.	109
Academic Department Locations	116
Contributors and Bibliography	118
Directions to Boston College.	<i>Inside back cover</i>

BOSTON COLLEGE
THEN AND NOW . . .

Boston College was founded by the Society of Jesus in 1863, and is one of twenty-eight Jesuit colleges and universities in the United States. With three teachers and twenty-two students, the school opened its doors on September 5, 1864. While it remained a small liberal arts college, the faculty was predominantly Jesuit, but today's full-time faculty is comprised of over 500 men and women, and 100 Jesuits. There are upwards of 60,000 alumni scattered across the planet from Beacon Hill to American Samoa.

Originally located on Harrison Avenue in the South End of Boston, where it shared quarters with the Boston College High School, the College outgrew its urban setting toward the end of its first fifty years. A new location was selected in Chestnut Hill, then almost rural, and four parcels of land were acquired in 1907. A design competition for the development of the campus was won by the firm of Maginnis and Walsh, and ground was broken on June 19, 1909, for the construction of Gasson Hall. It is located on the site of the Lawrence farm house, in the center of the original tract of land purchased by Father Gasson, and is built largely of stone taken from a quarry which occupied part of the sites of Devlin, Higgins, and Cushing Halls. The foundations were blasted out of solid ledge. Because of its historic value, Gasson is undergoing complete restoration in order to preserve its familiar Gothic spires for future generations of students and alumni.

Later purchases doubled the size of the property, with the addition of the upper campus in 1941, and the lower campus with the purchase of the Lawrence Basin and adjoining land in 1949. In 1974 Boston College acquired Newton College of the Sacred Heart, a mile-and-a-half from the Main Campus. With fifteen handsome Georgian buildings standing in a park-like estate of forty acres, it is now the site of the Boston College Law School, as well as several academic departments, and dormitories housing over 700 freshmen and sophomores.

Though incorporated as a University since its beginning, it was not until its second half-century that Boston College began to fill out the dimensions of its University charter. The Summer Session was inaugurated in 1924; the Graduate School of Arts and Sciences in 1925; the Law School, 1929; the Evening College, 1929; the Graduate School of Social Work, 1936; the School of Management, 1938; the School of Nursing, 1947; and the School of Education in 1952.

Weston Seismological Observatory, founded in 1928, was accepted as a Department of Boston College in 1947, offering courses in geophysics and geology to graduate students. The main concerns of the Observatory are recording and locating earthquakes, research in the earth's magnetic field, and the study of the earth's crust in the Boston area. The facilities include an Earth Science Library, seismic vault, and magnetic observation complex.

In 1929 Boston College conferred one earned bachelor's degree and fourteen master's degrees on fifteen teaching sisters through the Extension Division that was the precursor of the Graduate School of Arts and Sciences, the Evening College, and the Summer Session. Today, women students represent at least 50% of the University's enrollment, and 25% of total alumni.

In 1976 Boston College was accredited by, or a member of, twenty-two professional organizations and accrediting agencies. It is now the fourth largest private university in New England, with full- and part-time enrollment over 13,000, and is comprised of eleven schools, colleges, and institutes offering fourteen degree programs and one certification program.

-Excerpted from "A Guide to the Campus"

BOSTON COLLEGE DATA SUMMARY

1975-76

ADMISSIONS

Applicants	7,485
Registrants (Fall '75)	
Men	962
Women	1,069
Total Freshman Class	2,031

ENROLLMENT - (Full- & Part-Time)

Undergraduate	9,844
Graduate	3,701
	<u>13,545</u>

PERSONNEL

Full-Time Faculty	540
Part-Time Faculty	355
Teaching Fellows	74
Graduate Assistants	247
Administrative/Professional Staff	366
Secretarial/Clerical/Service Staff	864
	<u>2,446*</u>

DEGREES CONFERRED

Undergraduate	2,279
Graduate & Professional	1,186
	<u>3,465</u>

ALUMNI

63,200

LIBRARIES - (total holdings)

933,454

FACILITIES

Acres:

Chestnut Hill Campus	110.6
Newton Campus	40.2
Other	9.6
	<u>160.4</u>

Buildings:

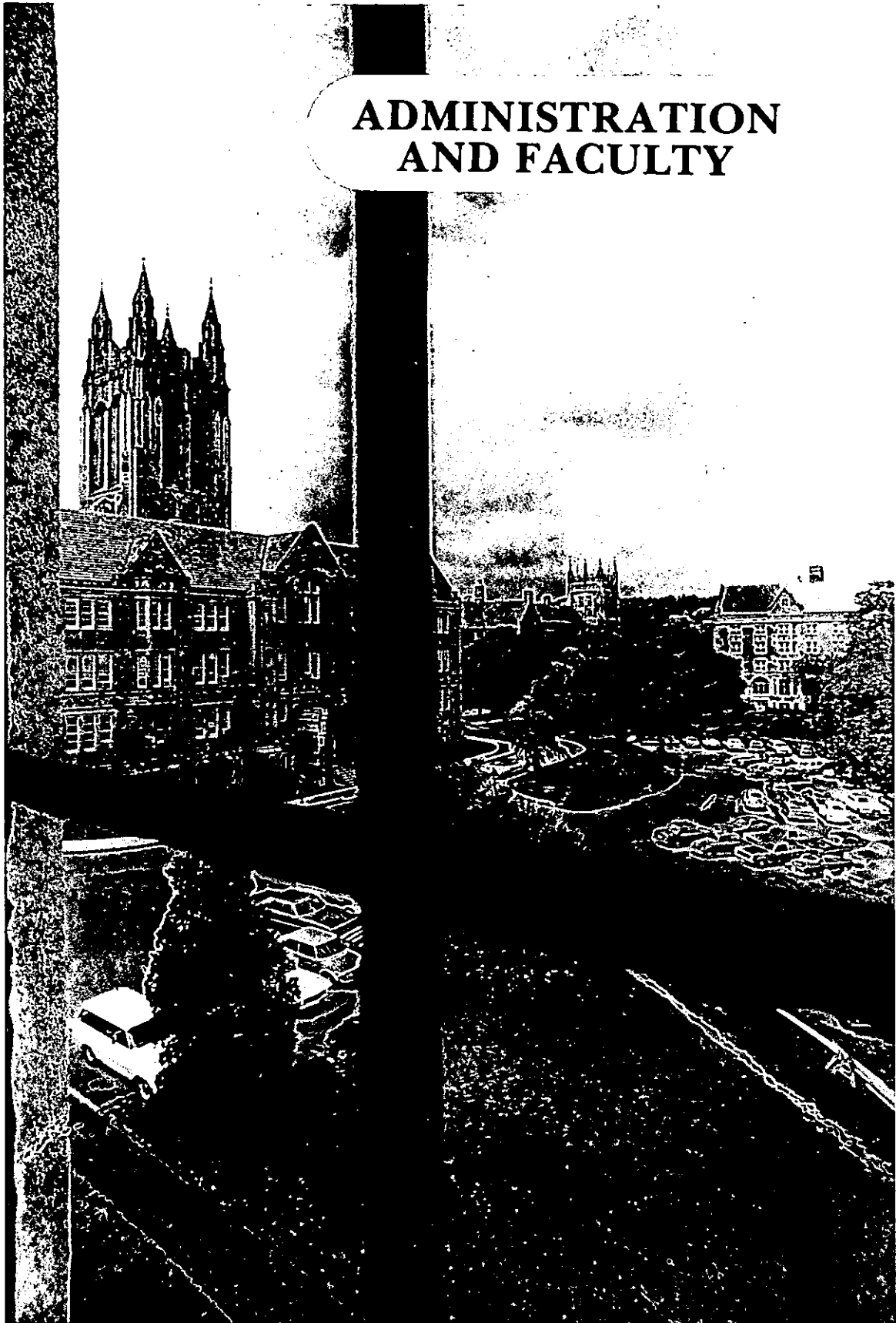
Administrative/Academic	25
Student Housing	31
Other	19
	<u>75</u>

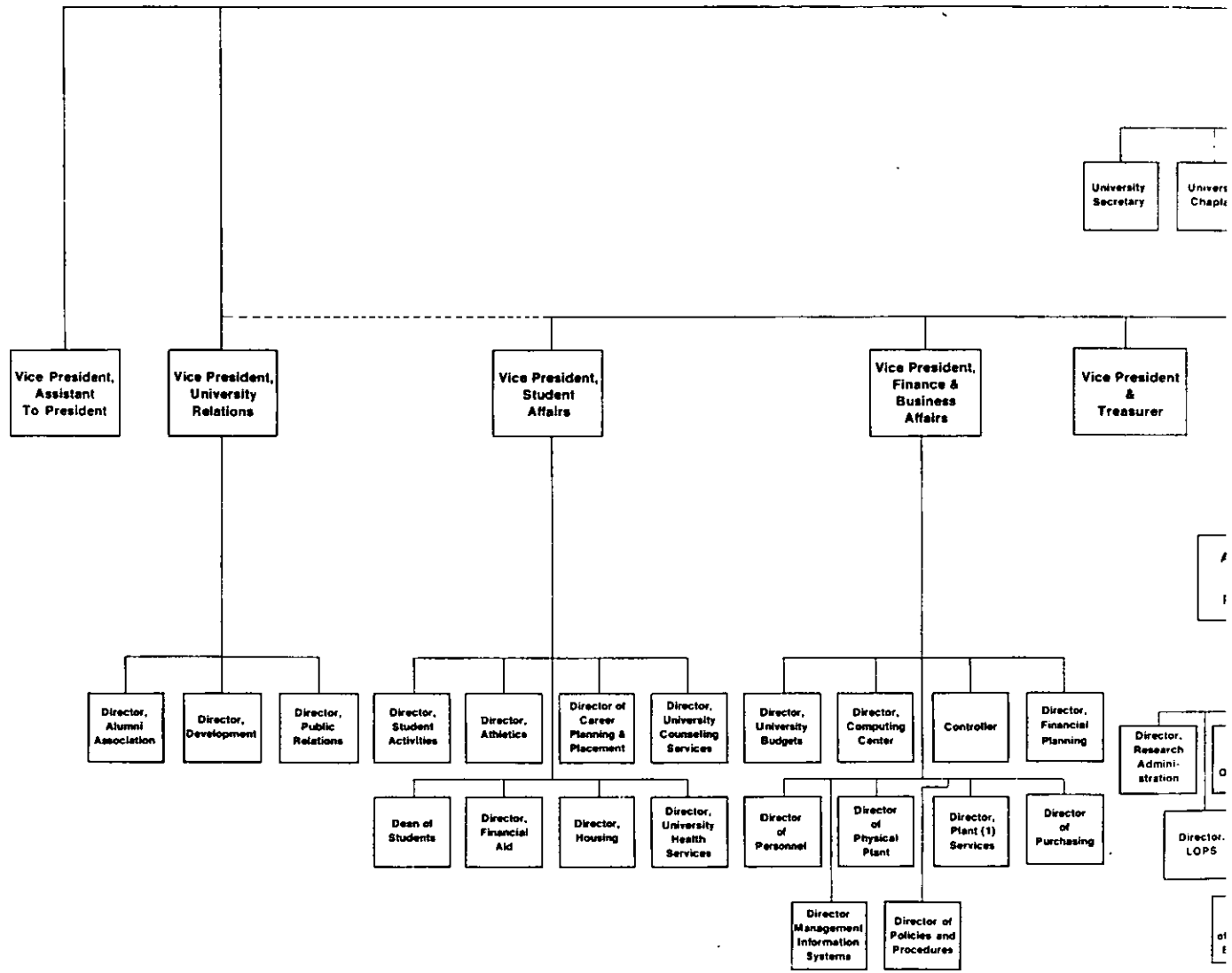
FINANCE**

Revenues	\$48,990
Expenditures	\$48,712

*As of 2/27/76
**1974-75

ADMINISTRATION AND FACULTY

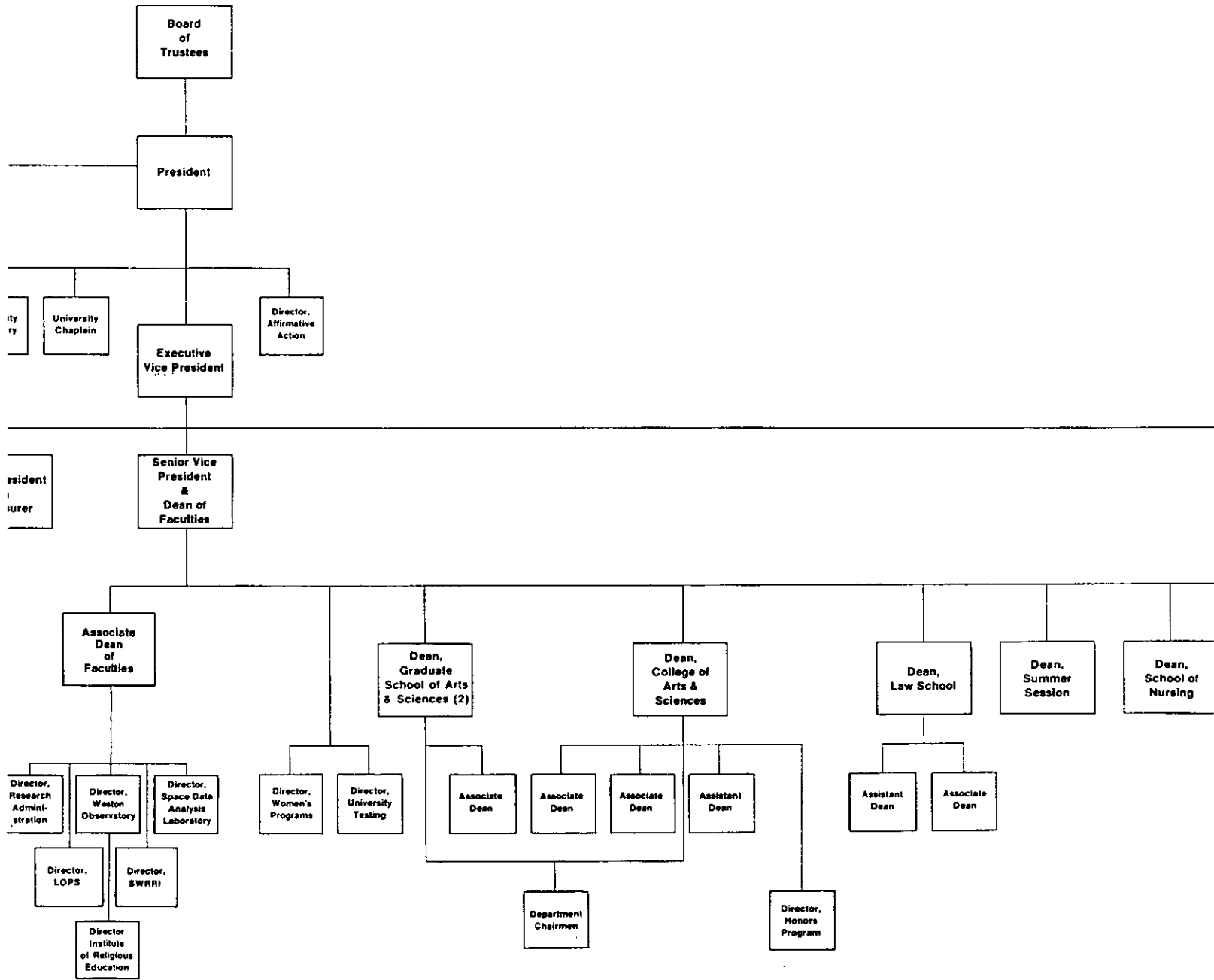




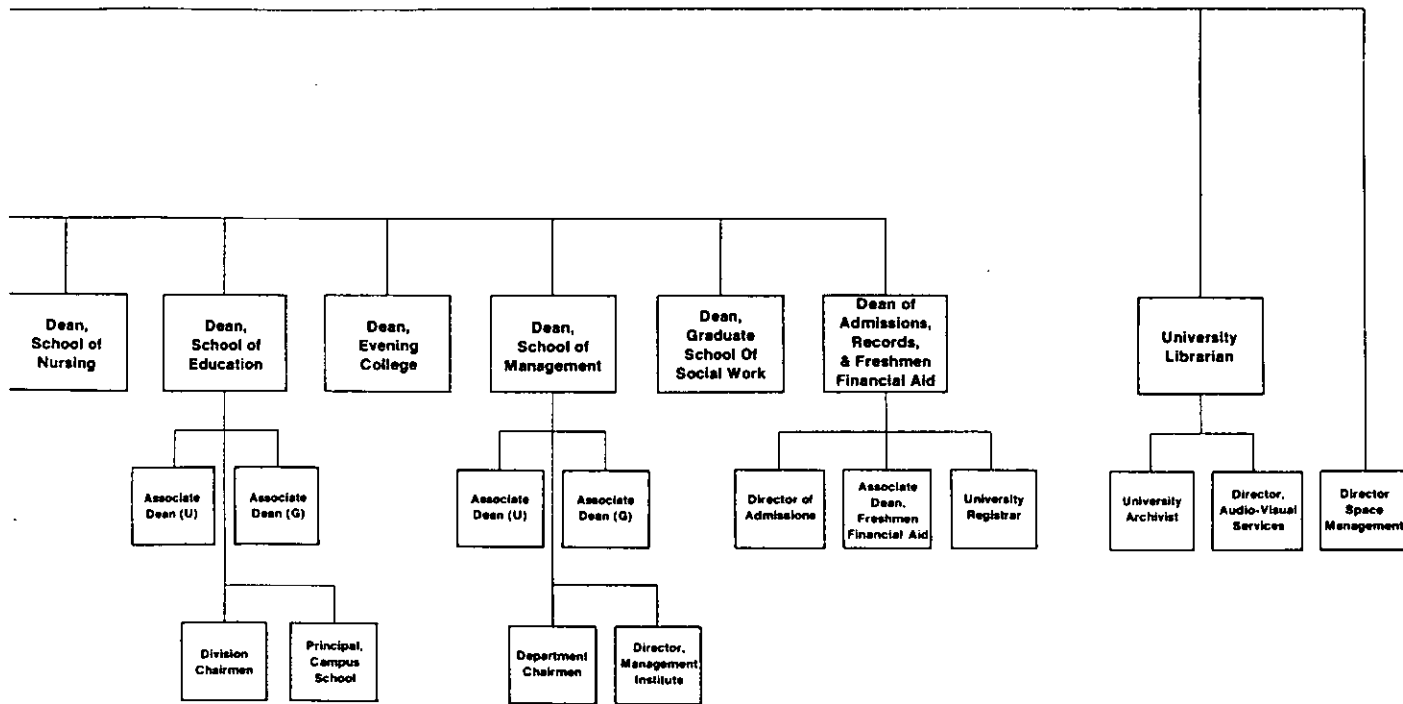
(1) Plant Services
 Bookstore
 Food Service
 Housekeeping
 Safety and Security
 Telecommunications
 Mail

(2) Includes Graduate
 Program in Education
 and Nursing

Source: Personnel Office



BOSTON COLLEGE
 CHART OF ADMINISTRATION, 1976



BOSTON COLLEGE BOARD OF TRUSTEES

1975-76

Joseph F. Abely, Jr., '50	Vice Chairman, General Foods Corporation
William L. Brown	President & Director, First National Bank of Boston
James F. Cleary, '50	President & Chief Executive Officer, Blythe, Eastman, Dillon & Co., Inc.
William F. Connell, '59	Chairman & Chief Executive Officer, Ogden Food Service Corporation
Joseph F. Cotter, '49*	Senior Vice President & Controller, ITT Sheraton Corporation
Joseph F. Fahey, S.J., '60, M.A.'61	Academic Dean, College of the Holy Cross
John T. Fallon	President, R.M. Bradley, Inc.
Maureen Foley, '71	Nursing Supervisor, Clinical Research Center, Boston Children's Hospital
Jean Ford, R.S.C.J.	Provincial, Washington Province, Society of the Sacred Heart
Thomas J. Galligan, Jr., '41, L.L.D.'75 (Hon.)*	President, Boston Edison Company
Thomas Gibbons, S.J., '53, S.T.L.'61	Principal, Boston College High School
Avram Goldberg	President, The Stop and Shop Companies
Patricia A. Goler, '51, Ph.D.'57	Dean, The College of Liberal Arts, Lowell University
The Honorable Edward M. Kennedy L.L.D.'66 (Hon.)	United States Senator
Mary M. Lai	Treasurer, Long Island University
T. Vincent Learson	Chairman of the Board (retired), International Business Machines
S. Joseph Loscocco, '43	President, Stagecoach Management Corporation
John Lowell*	Partner, Welsh and Forbes
Joseph F. MacDonnell, S.J., S.T.L.'62	Assistant Professor of Mathematics, Fairfield University
Francis C. Mackin, S.J., M.A.'53	Provost, Fordham University at Lincoln Center
Leo J. McGovern, S.J., '46, M.A.'47	Vice Provincial of Communities, Society of Jesus of New England
Robert A. Mitchell, S.J.	President, U.S. Jesuit Conference
J. Donald Monan, S.J.*	President, Boston College
Giles E. Mosher, Jr., '55	Chairman of the Board, Newton-Waltham Bank and Trust Company
The Honorable David S. Nelson, '57, J.D.'60	Magistrate, Superior Court of Massachusetts
Francis J. Nicholson, S.J., '42, M.A.'47	Professor of Law, Boston College Law School
William J. O'Halloran, S.J., '51, M.A.'52*	President, Le Moyne College

Joseph A. O'Hare, S.J.	Editor in Chief, America Magazine
Robert J. O'Keefe, '51	Senior Vice President, Chase Manhattan Bank
James P. O'Neill, '42	Senior Vice President, Xerox Corporation
The Honorable Thomas P. O'Neill, Jr., '36 L.L.D.'73 (Hon.)	House Majority Leader, United States Congress
Cornelius W. Owens, '36, L.L.D.'68 (Hon.)*	Executive Vice President (retired), American Telephone and Telegraph Company
John W. Padberg, S.J.	President, Weston College School of Theology
Joseph L. Shea, S.J., '40, L.L.D.'64 (Hon.)	President, Cheverus High School
Michael P. Walsh, S.J., '33, L.L.D.'75 (Hon.)*	Chairman of the Board, Boston College High School
Vincent C. Ziegler, L.L.D.'75 (Hon.)	Chairman of the Executive Committee, The Gillette Company, Inc.

*Member of the Executive Committee

OFFICERS OF THE UNIVERSITY

President	J. Donald Monan, S.J.
Executive Vice President	Francis B. Campanella
Senior Vice President and Dean of Faculties	Charles F. Donovan, S.J.
Vice President for University Relations	James P. McIntyre
Vice President and Treasurer	Thomas Fleming, S.J.
Acting Vice President of Student Affairs	Kevin P. Duffy
Secretary of the University	Paul A. FitzGerald, S.J.
Vice President, Financial and Business Affairs	John R. Smith
Vice President, Assistant to the President	Margaret A. Dwyer

Source: Secretary of the University

UNIVERSITY ADMINISTRATORS

Robert J. Braunreuther, S.J. (Cand.) Ph.D.	University Chaplain
Catherine H. Briel, M.B.A.	Controller
Henry A. Callahan, S.J., S.T.L.	University Archivist
John M. Callahan, B.S.	Director of Dining Services
J. Stephen Collins, Ph.D.	Director of Financial Aid
Richard E. Collins, B.B.A.	Acting Director of Housing
Justin C. Cronin, M.B.A.	Associate Dean, The School of Mgmt.
James J. Daley, M.A.	Dir., University Safety, Security, and Telecommunications
Margaret Dever, M.Ed.	Director of Women's Programs in Continuing Education
Edward C. Driscoll, A.B.	Director of Purchasing
John G. Durkin, B.A.	Bookstore Manager
John M. Flackett, LL.M.	Associate Dean, The Law School
Charles Flaherty, B.S.	Director of Research Administration
William J. Flynn, M.Ed.	Director of Athletics
Albert M. Folkard, A.M.	Director, Honors Program
Marc A. Fried, Ph.D.	Director, Laboratory of Psychosocial Studies
Bernard W. Gleason, Jr., M.B.A.	Director, Management Information Systems
Mary D. Griffin, Ph.D.	Associate Dean, School of Education
William T. Griffith, (Cand.) Ph.D.	University Registrar
Edward J. Hanrahan, S.J., A.M.	Dean of Students
John L. Harrison, Ph.D.	Associate Dean, College of Arts and Sciences
James A. Hayden, Jr., A.B.	Director of Development
Norma Jean Hemphill, Ph.D.	Principal, Campus School
Alice Jeghelian, Ph.D.	Director, Affirmative Action
Weston M. Jenks, Jr., M.Ed.	Director, University Counseling Serv.
Paul M. Kane, J.D.	Assistant Dean, The Law School
James P. Kennedy, B.B.A.	Director, University Budgets
Lorraine Kinnane, A.M.	Director, University Testing
Martin D. Lowenthal, Ph.D.	Director, Social Welfare Regional Research Institute

Continued. . .

Joseph F. MacSweeney, B.A.	Director, Plant Services
Richard Maffei, Ph.D.	Associate Dean, The School of Mgmt.
John J. Maguire, Ph.D.	Dean, Admissions, Records, and Freshman Financial Aid
Raymond J. Martin, Ph.D.	Associate Dean, The School of Education
Arnold F. Mazur, M.D.	Director, Health Services
Richard P. McBrien, S.T.D.	Director, Institute of Religious Education
Marie M. McHugh, Ph.D.	Assistant Dean, The College of Arts and Sciences
John McKiernan, M.B.A.	Director, Management Institute
Henry J. McMahon, M.B.A.	Associate Dean, The College of Arts and Sciences
Edward D. Miller, M.B.A.	Director, Public Relations
Francis F. Mills, B.A.	Director, Financial Planning
Fred B. Mills, Jr., (Cand.)M.B.A.	Director, University Policies and Procedures
Thomas F. O'Connell, D.C.L.	University Librarian
Alfred G. Pennino, B.S.	Director, Buildings and Grounds
Joseph B. Pomeroy, S.J., M.A.	Director, Computer Center
Leo F. Power, M.B.A., M.A.	Director, Space Data Analysis Laboratory
Fred J. Pula, Ed.D.	Director, University Audio-Visual Services
James J. Scannell, M.A.T.	Director, Admissions
James W. Skehan, S.J., Ph.D.	Director, Weston Observatory
John E. Steele, M.C.S.	Director, Career Planning and Placement
Leo V. Sullivan, B.S.	Director, Personnel
Roderick G. Wallick, M.B.A.	Director, Space Management
Edmond D. Walsh, S.J., A.M.	Associate Dean, Freshman Financial Aid
Carole L. Wegman, A.M.	Director, Student Activities
John F. Wissler, M.B.A.	Executive Director, Alumni Association

Sources: Chart of Administration, 1976
Boston College Bulletin

DEANS

Mary A. Dineen, Ed.D.	The School of Nursing
George Fuir, S.J., A.M., S.T.L.	The Summer Session
June G. Hopps, Ph.D.	The Graduate School of Social Work
Richard G. Huber, LL.M.	The Law School
Albert J. Kelley, Sc.D.	The School of Management
Thomas P. O'Malley, S.J., D.Litt.	The College of Arts and Sciences
Lester E. Przewlocki, Ph.D.	The School of Education
Donald J. White, Ph.D.	The Graduate School of Arts and Sciences
James A. Woods, S.J., M.A.T.	Evening College of Arts, Sciences, and Business Administration

DEPARTMENT CHAIRMEN

Accounting	Frederick J. Zappala, M.B.A.
Administrative Sciences	Walter H. Klein, Ph.D.
Biology	Donald J. Plocke, S.J., Ph.D.
Chemistry	Robert F. O'Malley, Ph.D.
Classical Studies	Robert F. Renehan, Ph.D.
Computer Sciences	John J. Neuhauser, Ph.D.
Economics	Harold A. Petersen, Ph.D.
English	Paul C. Doherty, Ph.D.
Finance	Walter T. Greaney, LL.M., Ph.D.
Fine Arts	Marianne W. Martin, Ph.D.
Geology and Geophysics	George D. Brown, Ph.D.
Germanic Studies	Christoph Eykman, Ph.D.
History	John L. Heineman, Ph.D.
Law	William B. Hickey, M.Ed., LL.M.
Marketing	Joseph D. O'Brien, Ph.D.
Mathematics	Gerald G. Bilodeau, Ph.D.
Philosophy	Joseph F.X. Flanagan, S.J., Ph.D.
Physics	Robert L. Carovillano, Ph.D.
Political Science	David R. Manwaring, Ph.D.

Continued. . .

Psychology	Norman H. Berkowitz, Ph.D.
Romance Languages and Literatures	Betty Rahv, Ph.D.
Slavic and Eastern Languages	Michael J. Connolly, Ph.D.
Sociology	Michael A. Malec, Ph.D.
Speech Communication and Theater	John H. Lawton, Ph.D.
Theology	Robert Daly, S.J., Ph.D.

Source: Boston College Bulletin

NON-FACULTY PERSONNEL

	1974-75				1975-76*			
	Men	Women	Total	%T**	Men	Women	Total	%T**
Professional & Administrative Staff	153	84	237	23%	154	89	243	23%
Sponsored Program Staff	41	27	68	7%	43	23	66	6%
Secretarial/Clerical	<u>26</u>	<u>310</u>	<u>336</u>	<u>33%</u>	<u>27</u>	<u>336</u>	<u>363</u>	<u>34%</u>
Subtotal	<u>220</u>	<u>421</u>	<u>641</u>	<u>63%</u>	<u>224</u>	<u>448</u>	<u>672</u>	<u>63%</u>
Support Services:								
Trade Supervisors	18	-	18	2	18	-	18	2
Tradesmen	47	1	48	5	52	-	52	5
Maintenance	119	12	131	14	119	15	134	13
Security	30	-	30	3	38	1	39	4
Switchboard	4	14	18	2	2	9	11	1
Dining Department	50	33	83	8	63	32	95	9
Nurses	-	11	11	1	-	12	12	1
Computer Technicians	3	-	3	-	4	-	4	-
General Service	<u>18</u>	<u>2</u>	<u>20</u>	<u>2</u>	<u>18</u>	<u>3</u>	<u>21</u>	<u>2</u>
Subtotal	<u>289</u>	<u>73</u>	<u>362</u>	<u>36%</u>	<u>314</u>	<u>72</u>	<u>386</u>	<u>36%</u>
TOTAL	<u>509</u>	<u>494</u>	<u>1,003</u>	<u>100%</u>	<u>538</u>	<u>520</u>	<u>1,058</u>	<u>100%</u>

*As of 7-20-76

**Percent of total non-faculty personnel, rounded.

Note: No longer includes St. Mary's personnel, who are employed by the Society of Jesus.

Source: Personnel Office

Faculty and Non-Faculty Personnel
(Full- and Part-Time)*

Geographic Distribution

Acton	4	Foxboro	2	Newtonville	30
Allston	32	Framingham	57	N. Chelmsford	1
Amherst	1	Gloucester	2	N. Quincy	5
Andover	1	Halifax	1	N. Reading	1
Arlington	39	Hanover	2	N. Andover	3
Ashland	5	Hatchville	1	N. Walpole	1
Auburndale	18	Haverhill	1	Norton	2
Bedford	3	Hingham	5	Norwell	1
Belmont	29	Holbrook	1	Norwood	10
Beverly	4	Holliston	13	Osterville	1
Billerica	4	Hopkinton	2	Peabody	3
Boston	85	Hudson	4	Plymouth	2
Braintree	16	Humarock	1	Quincy	13
Bridgewater	1	Hyde Park	18	Randolph	5
Brighton	167	Jamaica Plain	30	Reading	2
Brockton	12	Lee	1	Readville	1
Brookline	130	Lexington	16	Revere	2
Burlington	7	Lincoln	8	Rockland	4
Cambridge	82	Littleton	2	Rockport	2
Canton	5	Lynn	4	Roslindale	22
Carver	1	Magnolia	1	Roxbury	20
Centerville	1	Malden	6	Salem	5
Charlestown	2	Mansfield	1	Saugus	1
Chelmsford	2	Marblehead	4	Saxonville	1
Chelsea	2	Marlborough	7	Scituate	6
Chestnut Hill	177	Marshfield	2	Seekonk	1
Clinton	1	Mattapan	27	Segreganset	1
Cohasset	8	Maynard	1	Sharon	5
Concord	3	Medfield	5	Sherborn	5
Danvers	3	Medford	11	Shrewsbury	1
Dartmouth	2	Medway	5	Somerville	30
Dedham	17	Melrose	6	S. Bellingham	2
Dorchester	43	Middleboro	1	S. Boston	7
Dover	2	Milford	3	S. Natick	1
Duxbury	2	Millis	3	S. Weymouth	2
E. Boston	2	Milton	19	Southborough	6
E. Bridgewater	1	Natick	27	Squantum	1
E. Walpole	2	Needham	47	Stoneham	1
E. Weymouth	1	Needham Hgts.	29	Stoughton	4
E. Dedham	1	Newton	123	Sudbury	14
Easton	1	Newton Center	48	Swampscott	1
Everett	7	Newton Corner	2	Swansea	1
Falmouth	1	Newton Hglds.	24	Tewksbury	1
Florence	1	Newton U.F.	5	Waban	22

Wakefield	4	W. Roxbury	37	Woburn	11
Walpole	6	W. Somerville	1	Wollaston	1
Waltham	46	Westborough	3	Worcester	5
Watertown	48	Westfield	1	Wrentham	1
Wayland	17	Weston	11		
Wellesley	31	Westwood	5		
Wellesley Hills	10	Weymouth	7	<u>OUT-OF-STATE</u>	
W. Barnstable	1	Whitman	1	Connecticut	6
W. Boylston	1	Wilbraham	1	Maine	1
W. Bridgewater	1	Wilmington	2	New Hampshire	5
W. Medford	4	Winchester	9	Rhode Island	6
W. Newton	34	Winthrop	5		

*8/12/76

Source: Personnel Department

Faculty by School and Rank
1975-76

<u>School</u>	<u>Professor</u>		<u>Associate</u>		<u>Assistant</u>		<u>Instructor</u>		<u>Total</u>	
	<u>No.</u>	<u>%</u>	<u>No.</u>	<u>%</u>	<u>No.</u>	<u>%</u>	<u>No.</u>	<u>%</u>	<u>No.</u>	<u>%</u>
A & S	72	22	105	32	121	37	28	9	326	60
Education	16	27	15	25	18	30	11	18	60	11
Management	12	22	21	38	15	27	7	13	55	10
Nursing	0	0	15	27	18	32	23	41	56	11
Law	16	64	4	16	2	8	3	12	25	5
Social Work	<u>2</u>	11	<u>10</u>	55	<u>6</u>	33	<u>0</u>	0	<u>18</u>	3
Total*	<u>118</u>	22	<u>170</u>	32	<u>180</u>	33	<u>72</u>	13	<u>540</u>	100

*Excluding part-time lecturers, special contracts, and academic Administrators.

Source: Office of the Dean of Faculties

Faculty by School and Sex
1975-76

<u>School</u>	<u>Women</u>		<u>Men</u>		<u>Total</u>	
	<u>No.</u>	<u>%</u>	<u>No.</u>	<u>%</u>	<u>No.</u>	<u>%</u>
A & S	49	36.0	277	68.6	326	60.4
Education*	18	13.2	42	10.4	60	11.0
Management	1	0.7	54	13.3	55	10.2
Nursing*	56	41.3	0	--	56	10.4
Law	4	2.9	21	5.2	25	5.0
Social Work	<u>8</u>	5.9	<u>10</u>	2.5	<u>18</u>	3.0
Total**	<u>136</u>		<u>404</u>		<u>540</u>	100.0

*Graduate faculty in the Departments of Education and Nursing of the Graduate School of Arts and Sciences are included in this table with their respective undergraduate schools.

**Totals in distribution do not include part-time staff, or academic administrators.

Source: Office of the Dean of Faculties

Faculty by School and Tenure Status
1975-76

<u>School</u>	<u>Tenured</u>		<u>Non-Tenured</u>		<u>Total</u>	
	<u>No.</u>	<u>%</u>	<u>No.</u>	<u>%</u>	<u>No.</u>	<u>%</u>
A & S	211	65	115	35	326	60
Education	31	52	29	48	60	11
Management	24	44	31	56	55	10
Nursing*	18	32	38	68	56	11
Law	16	64	9	36	25	5
Social Work	<u>12</u>	67	<u>6</u>	33	<u>18</u>	3
Total**	<u>312</u>	58	<u>228</u>	42	<u>540</u>	3

*Graduate faculty in the departments of Education and Nursing of the Graduate School of Arts and Sciences are included in this table with their respective undergraduate schools.

**Totals in distribution do not include part-time staff or academic administrators

Source: Office of the Dean of Faculties

Faculty by Highest Earned Degree and Rank
1975-76

<u>Degree</u>	<u>Professor</u>		<u>Associate</u>		<u>Assistant</u>		<u>Instructor</u>		<u>Total</u>	
	<u>No.</u>	<u>%</u>	<u>No.</u>	<u>%</u>	<u>No.</u>	<u>%</u>	<u>No.</u>	<u>%</u>	<u>No.</u>	<u>%</u>
Doctorate	106	27	155	40	119	31	6	2	386	72
First Professional*	8	29	4	14	12	43	4	14	28	5
Masters	4	3	11	9	49	39	62	49	126	23
Bachelors	-	-	-	-	-	-	-	-	-	-
Total**	<u>118</u>	22	<u>170</u>	32	<u>180</u>	33	<u>72</u>	13	<u>540</u>	100

*Including LLB, JD, STB, PhL, and STL.

**Excluding part-time lecturers, special contracts and academic administrators.

Source: Office of the Dean of Faculties

Faculty by Highest Earned Degree and Sex
1975-76

<u>Degree</u>	<u>Women</u>		<u>Men</u>		<u>Total</u>	
	<u>No.</u>	<u>%</u>	<u>No.</u>	<u>%</u>	<u>No.</u>	<u>%</u>
Doctorate	74	54.4	312	77.2	386	71.5
First Professional*	4	2.9	24	5.9	28	5.2
Masters	58	42.7	68	16.8	126	23.3
Totals**	<u>136</u>		<u>404</u>		<u>540</u>	100.0

*Including LLB, JD, PhL, and STL.

**Excluding part-time lecturers, special contracts and academic administrators

Source: Office of the Dean of Faculties

Faculty by Rank and Sex
1975-56

<u>Rank</u>	<u>Women</u>		<u>Men</u>		<u>Total</u>	
	<u>No.</u>	<u>%</u>	<u>No.</u>	<u>%</u>	<u>No.</u>	<u>%</u>
Professor	8	6	110	27	118	22
Associate	35	26	135	33	170	32
Assistant	52	38	128	32	180	33
Instructor	<u>41</u>	30	<u>31</u>	8	<u>72</u>	13
Total*	<u>136</u>		<u>404</u>		<u>540</u>	

*Excluding special contracts and academic administrators.

Source: Office of the Dean of Faculties

Full-Time Equivalent Faculty
by School
1975-76

<u>School</u>	<u>Full Time</u>	<u>FTE of Part Time</u>	<u>Total FTE Faculty</u>
Arts and Sciences	326	67.0	393.0
Education*	60	13.5	73.5
Management	55	08.0	63.0
Nursing*	56	10.0	66.0
Law	25	07.5	32.5
Social Work	<u>18</u>	<u>04.7</u>	<u>22.7</u>
Total**	<u>540</u>	<u>110.7</u>	<u>650.7</u>

*Graduate faculty of the Departments of Education and Nursing of the Graduate School of Arts and Sciences are included in this table with their respective schools.

**Does not include 23 full-time academic administrators and 21 full-time academic directors

Source: Office of the Dean of Faculties

FACULTY

Average Compensation by Rank*
 AAUP Category I
 (9-month equivalent)
 1974-75

<u>Rank</u>	<u>Boston College</u>	<u>All Combined Category</u>	<u>Church- Related</u>
Professor	\$24,794	\$26,270	\$23,740
Associate	19,512	19,280	18,650
Assistant	15,858	15,780	15,330
Instructor	13,924	12,340	12,460

*Includes salary and fringe benefits.

Source: AAUP Bulletin, Summer 1975

UNIVERSITY ACADEMIC SENATE
 Membership Classification
 1975-76

Classification	Total
Faculty	
Arts & Sciences	9
Education	2
Management	2
Nursing	1
Law	1
Social Work	<u>1</u>
	16
Administration	10
Undergraduate Students	
Arts & Sciences	5
Education	1
Management	1
Nursing	1
Evening College	<u>1</u>
	9
Graduate Students	1
TOTAL	<u><u>36</u></u>

Source: Corresponding Secretary, University Academic Senate

UNIVERSITY ACADEMIC SENATE

Membership List - 1975-76

ELECTED FACULTY SENATORS

College of Arts and Sciences

Prof. Pamela Berger
Rev. Edward Callahan, S.J.
Rev. David F. Carroll, S.J.
Rev. Robert Cheney, S.J.
Prof. J. Christopher Hepburn
Prof. Diana Hyman
Prof. Antonio Mastrobuono
Prof. Kristin Morrison
Prof. Dennis Taylor

School of Management

Prof. Louis Corsini
Prof. John Neuhauser

School of Education

Prof. Ronald Nuttall
Prof. Michael Schiro

School of Nursing

Prof. Marjory Gordon

Law School

Prof. James L. Houghteling

School of Social Work

Prof. Anne McInvale

EX-OFFICIO MEMBERS

Jeanne Aber - Associate University Librarian
Dr. June G. Hopps - Dean, Graduate School of Social Work
Dr. Mary Dineen - Dean, School of Nursing
Rev. Charles F. Donovan, S.J. - Dean of Faculties
Prof. Richard E. Huber - Dean, Law School
Dr. Albert Kelley - Dean, School of Management
Rev. Thomas P. O'Malley, S.J. - Dean, College of Arts and Sciences
Dr. Lester E. Przewlocki - Dean, School of Education
Dr. Donald J. White - Dean, Graduate School of Arts and Sciences
Rev. James A. Woods, S.J. - Dean, Evening College

MEMBERSHIP LIST - 1975-76

UNDERGRADUATE STUDENT SENATORS

Thomas Donnelly - SOM
Margaret Everard - Evening College
Wen Huwa Ho - A & S
Frank Marinelli - A & A
Elizabeth Melville - Nur.
Kathleen Norris - Ed.
Godfrey Ohadugha - A & S
Timothy Ryan - A & S
Susan Santos - A & S

GRADUATE STUDENT SENATOR

Charles Mole

OFFICERS

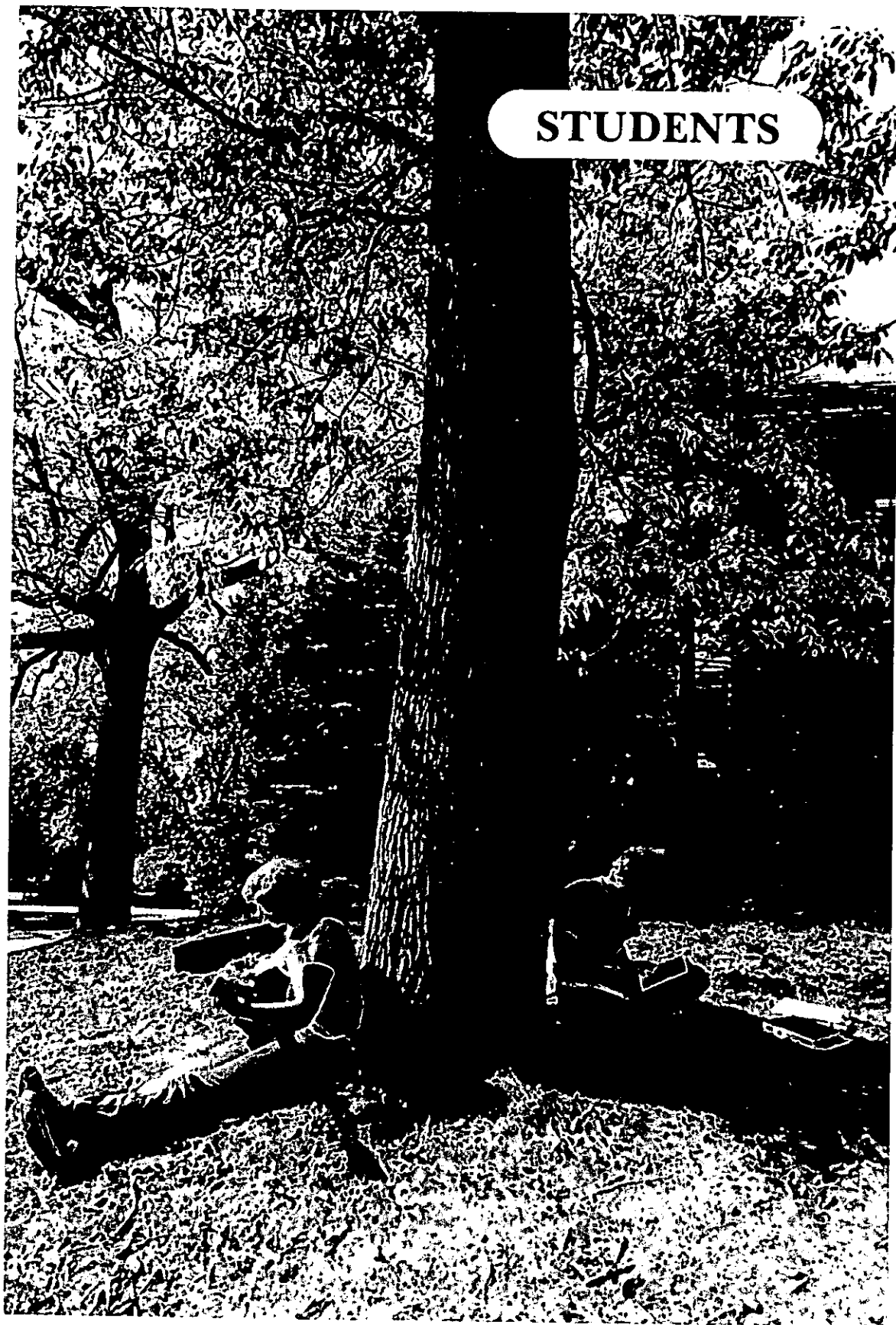
Augustus J. Fabens - Moderator
Richard Huber - Vice-Moderator
Wen Huwa Ho - Secretary

EXECUTIVE COMMITTEE

Rev. Edward Callahan, S.J.
Frank Marinelli, Chairman
Charles Molé
Rev. Thomas P. O'Malley, S.J.
Prof. John Neuhauser

Source: Corresponding Secretary, University Academic Senate

STUDENTS



Freshman Applications and Enrollment

<u>Fall</u>	<u>Applications</u> ¹	<u>Enrollment</u> ²		
		<u>Men</u>	<u>Women</u>	<u>Total</u>
1969	5,242	1,232	364	1,596
1970	6,605	1,402	685	2,087
1971	6,712	1,024	725	1,749
1972	7,286	1,253	976	2,229
1973	8,358	913	874	1,787
1974	8,377	1,144	1,008	2,152
1975	9,486	962	1,069	2,031
1976	10,831*	-	-	2,150*

*Estimated

Sources: ¹ Admissions Office

² Office of the Registrar

SAT Averages by Class

<u>Class</u>	<u>Verbal</u>	<u>Mathematical</u>
1964	521	522
1965	504	539
1966	535	544
1967	544	549
1968	559	574
1969	565	576
1970	556	570
1971	546	567
1972	556	578
1973	549	574
1974	533	554
1975	530	554
1976	528	552
1977	518	554
1978	515	548
1979	504	544

Source: Admissions Office

CLASS OF 1979
Geographic Distribution

California	3	New Jersey	163
Delaware	7	New York	283
Florida	4	North Carolina	2
Georgia	4	Ohio	20
Illinois	27	Oklahoma	2
Indiana	5	Pennsylvania	58
Iowa	2	Puerto Rico	7
Kansas	1	Texas	5
Louisiana	3	Virgin Islands	1
Maryland	16	Virginia	4
Michigan	8	Washington, D.C.	10
Minnesota	1	Washington	1
Missouri	2	Wisconsin	<u>7</u>
			<u>646</u>

Massachusetts	1,028
Other New England	327
Other United States	646
International	<u>18</u>
Total	<u>2,019*</u>

*May, 1976

Source: Office of the Registrar

Undergraduate Transfer Students

by Year and Sex

<u>Fall</u>	<u>Men</u>	<u>Women</u>	<u>Total</u>
1969	NA	NA	58
1970	60	36	96
1971	88	115	203
1972	177	283	460
1973	146	267	413
1974	251	300	551
1975	163	251	414

by Type of Previous Institution

<u>Fall</u>	<u>2-Year Public</u>	<u>2-Year Private</u>	<u>4-Year Public</u>	<u>4-Year Private</u>	<u>Total</u>
1973	56	70	71	216	413
1974	77	77	82	315	551
1975	41	58	83	232	414

NA = Breakdown not available

Source: Admissions Office

Graduate and Undergraduate Enrollment
Full- and Part-Time

	Undergraduate			Graduate			TOTAL
	F.T.	P.T.	TOTAL	F.T.	P.T.	TOTAL	
1972-73	7,656	830	8,486	1,907	1,394	3,301	11,787
1973-74	7,774	967	8,741	2,005	1,635	3,640	12,381
1974-75	8,325	893	9,218	1,861	1,670	3,531	12,749
1975-76	8,749	1,095	9,844	1,881	1,820	3,701	13,545

Source: Admissions Office

Undergraduate Day and Evening
and
Graduate Enrollment

<u>Year</u>	<u>Undergraduate</u>			<u>Graduate/ Professional</u>	<u>Total</u>
	<u>Day</u>	<u>Evening</u>	<u>Total</u>		
1969-70	6,231	984	7,115	3,099	10,214
1970-71	6,663	1,076	7,739	3,217	10,956
1971-72	6,640	1,101	7,741	3,370	11,111
1972-73	7,313	1,173	8,486	3,301	11,787
1973-74	7,543	1,198	8,741	3,640	12,381
1974-75	8,024	1,194	9,218	3,531	12,749
1975-76	8,463	1,381	9,844	3,701	13,545

Source: Secretary of the University

Undergraduate Enrollment
by School

<u>Year</u>	<u>A&S</u>	<u>SOM</u>	<u>Education</u>	<u>Nursing</u>	<u>Evening</u>	<u>Total</u>
1970-71	3,032	1,774	1,268	589	1,076	7,739
1971-72	3,145	1,641	1,284	570	1,101	7,741
1972-73	3,589	1,663	1,344	717	1,173	8,486
1973-74	3,864	1,657	1,266	756	1,198	8,741
1974-75	4,284	1,724	1,263	753	1,194	9,218
1975-76	4,651	1,947	1,150	715	1,381	9,844

Source: Secretary of the University

Graduate Enrollment
by School

<u>Year</u>	<u>A&S*</u>	<u>SOM</u>	<u>Social Work</u>	<u>Law</u>	<u>Total</u>
1970-71	2,019	351	206	641	3,217
1971-72	2,107	288	244	731	3,370
1972-73	2,048	317	228	708	3,301
1973-74	2,388	320	244	688	3,640
1974-75	2,245	319	257	710	3,531
1975-76	2,302	398	267	734	3,701

*Includes Graduate Education and Nursing

Source: Secretary of the University

GRADUATE ENROLLMENT

By Degree Program & Discipline
Full- and Part-Time

	1973-74		1974-75		1975-76	
	<u>Masters</u>	<u>Ph.D.</u>	<u>Masters</u>	<u>Ph.D.</u>	<u>Masters</u>	<u>Ph.D.</u>
American Studies	24	1	18	-	12	1
A&S Unspecified	655	29	884	14	863	20
Biology	37	13	26	15	26	22
Chemistry	23	23	19	13	21	15
Classics	4	-	8	-	11	-
Economics	8	60	4	63	3	64
Education	814	336	717	312	672	357
English	81	18	65	12	73	20
French	37	20	26	16	22	10
Geology	17	-	12	-	13	-
Geology-Geophysics	1	1	10	-	15	1
Geology NSF	36	-	-	-	1	-
Geophysics	8	-	3	-	8	-
Germanic Studies	5	14	-	-	1	10
Greek	2	-	-	-	-	-
History	30	23	22	12	39	23
Interdisciplinary	1	-	2	-	1	-
Italian	-	-	-	-	-	-
Latin	4	-	4	-	3	-
Law	709	-	492	-	395	-
Linguistics	-	-	-	-	1	-
Management	357	-	418	-	456	-
Mathematics	25	-	13	-	18	-
Mathematics NSF	64	-	-	-	2	-
Nursing	105	1	78	1	77	2
Philosophy	14	50	18	40	25	50
Physics	5	23	3	18	7	17
Political Science	35	16	27	15	25	21
Psychology	19	30	11	33	13	38
Russian	9	-	4	-	4	-
Slavic	1	-	2	1	4	-
Social Work	251	-	264	-	279	-
Sociology	34	19	36	18	13	8
Spanish	20	7	14	10	16	19
Theology	21	17	10	17	16	19
Totals*	<u>3,456</u>	<u>701</u>	<u>3,443</u>	<u>606</u>	<u>3,508</u>	<u>715</u>

*Figures include students who attended for just one semester, as well as those who attended a full year.

Source: Office of the Registrar

Undergraduate and Graduate Enrollment
By Sex

<u>Year</u>	<u>Undergraduate</u>		<u>Graduate/ Professional</u>		<u>Total</u>	
	<u>Men</u>	<u>Women</u>	<u>Men</u>	<u>Women</u>	<u>Men</u>	<u>Women</u>
1967-68	5,191	1,784	1,865	898	7,056	2,682
1968-69	5,129	1,879	1,880	1,084	7,009	2,963
1969-70	5,205	1,910	1,974	1,125	7,179	3,035
1970-71	5,311	2,428	1,983	1,234	7,294	3,662
1971-72	5,019	2,722	2,029	1,341	7,048	4,063
1972-73	4,945	3,541	1,975	1,326	6,920	4,867
1973-74	4,700	4,041	2,022	1,618	6,722	5,659
1974-75	4,745	4,473	1,831	1,700	6,576	6,173
1975-76	4,779	5,065	1,908	1,793	6,687	6,858

Source: Secretary of the University

Full-Time Equivalent Enrollment*

<u>Year</u>	<u>Undergraduate</u>			<u>Graduate/ Professional</u>	<u>Total</u>
	<u>Day</u>	<u>Evening</u>	<u>Total</u>		
1969-70	6,170	480	6,650	2,324	8,974
1970-71	6,589	491	7,080	2,464	9,544
1971-72	6,611	638	7,249	2,545	9,794
1972-73	7,296	637	7,933	2,378	10,311
1973-74	7,518	578	8,096	2,550	10,646
1974-75	8,008	614	8,622	2,418	11,040
1975-76	8,463	651	9,114	2,486	11,600

*Method of computation: three part-time students equals one Full-time Equivalent Student.

Source: Secretary of the University

Evening College Enrollment

	<u>First Semester</u>			<u>Second Semester</u>		
	<u>Men</u>	<u>Women</u>	<u>Total</u>	<u>Men</u>	<u>Women</u>	<u>Total</u>
1974-75	534	660	1,194	475	539	1,014
1975-76	607	774	1,381	490	604	1,094

Source: Office of the Registrar

Summer Session Enrollment

<u>Summer</u>	<u>Regular Session</u>			<u>Workshops and Institutes</u>	<u>Total</u>
	<u>Undergraduate</u>	<u>Graduate/ Professional</u>	<u>Total</u>		
1967	1,270	1,113	2,383	870	3,253
1968	1,251	1,161	2,412	1,033	3,445
1969	1,028	1,592	2,620	1,451	4,071
1970	691	1,434	2,125	679	2,804
1971	676	1,149	1,825	508	2,333
1972	607	1,077	1,684	446	2,130
1973	622	1,155	1,777	623	2,400
1974	692	1,116	1,808	714	2,522
1975	889	1,107	1,996	769	2,765
1976	894	1,224	2,118	676	2,794

Source: Summer Session Office

International Student Enrollment
1975-76

	<u>Men</u>	<u>Women</u>	<u>Total</u>		<u>Men</u>	<u>Women</u>	<u>Total</u>
Austria	0	1	1	Ireland	4	2	6
Australia	2	0	2	Israel	0	1	1
Bangladesh	1	0	1	Italy	3	0	3
Bahamas	0	1	1	Jamaica	1	2	3
Bermuda	2	0	2	Japan	12	5	17
Brazil	2	2	4	Kenya	1	0	1
Canada	8	9	17	Korea	1	1	2
Chile	1	0	1	Kuwait	0	1	1
Colombia	1	1	2	Lebanon	1	0	1
Cyprus	1	0	1	Lesotho	1	0	1
Dominica	1	0	1	Liberia	0	1	1
Ecuador	3	1	4	Libya	1	0	1
El Salvador	1	0	1	Macao	0	1	1
Egypt	0	1	1	Malaysia	0	1	1
England	1	1	2	Mexico	3	1	4
Ethiopia	3	0	3	Morocco	2	0	2
France	2	0	2	Netherlands	0	1	1
Ghana	2	0	2	Netherlands- Antilles	0	1	1
Greece	1	4	5	Nicaragua	0	5	5
Hong Kong	6	2	8	Nigeria	4	0	4
India	10	2	12	Panama	1	1	2
Iran	4	3	7	Peru	1	2	3

International Student Enrollment
1975-76

	<u>Men</u>	<u>Women</u>	<u>Total</u>		<u>Men</u>	<u>Women</u>	<u>Total</u>
Philippines	1	3	4	Taiwan	7	3	10
Portugal	1	1	2	Thailand	5	1	6
Somalia	1	0	1	Trinidad	1	0	1
South Vietnam	1	0	1	Uganda	0	1	1
Spain	0	1	1	Venezuela	<u>3</u>	<u>1</u>	<u>4</u>
Sweden	0	1	1	TOTAL	<u>108</u>	<u>66</u>	<u>174*</u>

*This figure does not include two currently enrolled students from the Soviet Union who have refugee visas. Students with permanent residency visas are also not included.

Source: Office of Student Activities

Veterans Enrolled at Boston College
1975-76

<u>School</u>	<u>Male</u>	<u>Female</u>	<u>Full Time</u>	<u>Part Time</u>	<u>Total</u>
Arts & Sciences	118	88	206		206
Education	19	33	52		52
Evening College	74	3	45	32	77
Nursing	6	32	38		38
Management	71	15	86		86
Graduate School of Arts & Sciences	48	14	33	29	62
Graduate School of Management	50		15	35	50
Law School	35	3	38		38
Social Work	<u>8</u>	<u>1</u>	<u>9</u>	<u>—</u>	<u>9</u>
TOTAL	<u>429</u>	<u>189</u>	<u>522</u>	<u>96</u>	<u>618</u>
		<u>618</u>		<u>618</u>	

Source: Office of the Registrar

Undergraduate Degrees Conferred*
By Degree and Number of Majors

<u>Arts and Sciences</u>	<u>1973-74</u>	<u>1974-75</u>	<u>1975-76</u>
<u>B.A.</u>			
Single Major	543	559	687
Double Major	231	212	242
Triple Major	<u>2</u>	<u>3</u>	<u>5</u>
	<u>776</u>	<u>774</u>	<u>934</u>
<u>B.S.</u>			
Single Major	130	116	136
Double Major	<u>26</u>	<u>31</u>	<u>47</u>
	<u>156</u>	<u>147</u>	<u>183</u>
Total A&S	<u>932</u>	<u>921</u>	<u>1,117</u>
<u>School of Education-B.A.</u>			
Single Major	289	284	334
Double Major	17	17	23
Triple Major	<u>4</u>	<u>-</u>	<u>1</u>
	<u>310</u>	<u>301</u>	<u>358</u>
<u>School of Management-B.S.</u>			
Single Major	326	273	430
Double Major	<u>44</u>	<u>36</u>	<u>62</u>
	<u>370</u>	<u>309</u>	<u>492</u>
<u>School of Nursing-B.S.</u>			
	<u>164</u>	<u>205</u>	<u>225</u>
Subtotal - Undergraduate Degrees	<u>1,776</u>	<u>1,736</u>	<u>2,192</u>
<u>Evening College</u>			
B.A.	-	71	74
B.S.	-	20	12
A.A.	<u>-</u>	<u>-</u>	<u>1</u>
	<u>-</u>	<u>91</u>	<u>87</u>
Total Undergraduate Degrees Conferred	<u>1,776</u>	<u>1,827</u>	<u>2,279</u>

*Sept.-Jan.-June

Source: Office of the Registrar

Undergraduate Degrees Conferred
by Major*

	<u>1973-74</u>	<u>1974-75</u>	<u>1975-76</u>
Accounting	117	115	202
Administrative Science	-	1	-
American Studies	-	-	3
Art History	5	19	17
Biology	124	116	136
Chemistry	18	18	34
Classics	2	6	1
Computer Science	11	18	19
Deaf/Blind	6	16	15
Earth Science	-	1	-
Economics	130	128	118
English	185	177	154
Elementary Education	93	103	99
Finance	63	54	68
Fine Arts	-	-	1
French	3	15	7
General Business	22	-	-
General Management	-	16	-
Geology	11	4	7
Geophysics	-	-	1
German	-	3	4
History	73	54	77
Independent	1	-	4
Italian	-	1	1
Linguistics	1	2	-
Management	19	3	33
Marketing	89	79	139
Mathematics	46	26	46
Modern Languages	-	-	1
Nursing	164	205	225
Operations Management	2	2	2

	<u>1973-74</u>	<u>1974-75</u>	<u>1975-76</u>
Philosophy	52	52	45
Physics	4	8	4
Political Science	121	115	177
Production Management	7	4	1
Production & Operations Mgmt.	4	-	-
Psychology	122	104	141
Romance Languages	6	8	3
Russian	3	-	6
Secondary Education	93	59	50
Slavic Studies	-	-	1
Sociology	61	62	123
Spanish	1	8	13
Special Education/Elem. Ed.**	106	116	176
Speech Communication	2	5	15
Speech Theatre	5	5	4
Studio Art	-	-	8
Theology	<u>3</u>	<u>8</u>	<u>10</u>
TOTALS	<u>1,776</u>	<u>1,736</u>	<u>2,192</u>

*Double and Triple majors counted by first majors.

**Elem. Ed. majors with concentration in Special Ed.

Source: Office of the Registrar

UNDERGRADUATE DEGREES CONFERRED
by School and by Major

1975

1976

	A. & S.		Ed.	SOM	Nurs.	TOT.	A. & S.		Ed.	SOM	Nurs.	TOT.
	A.B.	B.S.	B.A.	B.S.	B.S.		A.B.	B.S.	B.A.	B.S.	B.S.	
Accounting				115		115				202		202
Admin. Science				1		1						-
American Studies						-	3					3
Art History	19					19	17					17
Biology		116				116		135	1			136
Chemistry		18				18		34				34
Classics	6					6	1					1
Computer Science				18		18				19		19
Deaf/Blind			16			16			15			15
Earth Science		1				1						-
Economics	111			17		128	90			28		118
English	173		4			177	147		7			154
Elementary Ed.			103			103			99			99
Finance				54		54				68		68
Fine Arts						-	1					1
French	15					15	7					7
General Management				16		16						
Geology		4				4		7				7
Geophysics						-		1				1
German	3					3	4					4
History	54					54	77					77

1975

1976

	1975					1976						
	A. & S.		Ed.	SOM	Nurs.	A. & S.		Ed.	SOM	Nurs.	TOT.	
	A.B.	B.S.	B.A.	B.S.	B.S.	TOT.	A.B.	B.S.	B.A.	B.S.	B.S.	TOT.
Independent						-	2	2				4
Italian	1					1	1					1
Linguistics	2					2						-
Management					3	3				33		33
Marketing					79	79				139		139
Mathematics	26					26	44		2			46
Modern Languages						-	1					1
Nursing						205					225	225
Operations Mgmt.					2	2				2		2
Philosophy	51		1			52	45					45
Physics		8				8		4				4
Political Science	115					115	177					177
Production Mgmt.					4	4				1		1
Psychology	104					104	141		1			142
Romance Languages	8					8	3					3
Russian						-	6					6
Secondary Education			59			59			50			50
Slavic Studies						-	1					1
Sociology	62					62	118		5			123
Spanish	7		1			8	13					13
Special Education			116			116			176			176
Speech Communication	5					5	14		1			15
Speech Theatre	4		1			5	3		1			4
Studio Art						-	8					8
Theology	8					8	10					10
TOTALS	<u>774</u>	<u>147</u>	<u>301</u>	<u>309</u>	<u>205</u>	<u>1,736</u>	<u>934</u>	<u>183</u>	<u>358</u>	<u>492</u>	<u>225</u>	<u>2,192</u>

Source: Office of the Registrar

UNDERGRADUATE & GRADUATE DEGREES CONFERRED*
by Degree & by Sex

	1973-74			1974-75			1975-76		
	Men	Women	Total	Men	Women	Total	Men	Women	Total
<u>UNDERGRADUATE</u>									
College of A. & S.									
A.B.	525	251	776	461	313	774	469	465	934
B.S.	130	26	156	103	44	147	123	60	183
Total A. & S.	655	277	932	564	357	921	592	525	1,117
School of Ed.-A.B.	72	238	310	62	239	301	59	299	358
School of Nursing-B.S.	2	162	164	2	203	205	5	220	225
School of Mgmt.-B.S.	346	24	370	280	29	309	421	71	492
	420	424	844	344	471	815	485	590	1,075
Subtotal Undergraduate	1,075	701	1,776	908	828	1,736	1,077	1,115	2,192
Evening College-									
A.B.	-**	-	-	37	34	71	41	33	74
B.S.	-	-	-	19	1	20	11	1	12
A.A.	-	-	-	-	-	-	-	1	1
				56	35	91	52	35	87
Total Undergraduate Degrees Conferred	1,075	701	1,776	964	863	1,827	1,129	1,150	2,279

	1973-74			1974-75			1975-76		
	Men	Women	Total	Men	Women	Total	Men	Women	Total
<u>GRADUATE***</u>									
Ph.D	49	31	80	52	23	75	52	23	75
D.Ed.	3	-	3	3	1	4	13	2	15
M.A.	79	84	163	77	72	149	64	53	117
M.S.	12	70	82	19	67	86	9	65	74
M.Ed.	79	241	320	98	299	397	106	309	415
M.A.T.	6	12	18	8	13	21	10	17	27
M.S.T.	11	6	17	10	8	18	2	1	3
J.D.	206	43	249	160	46	206	166	66	232
M.B.A.	84	8	92	82	8	90	73	13	86
M.S.P.	9	15	24	7	10	17	7	8	15
M.S.W.	21	51	72	24	62	86	34	61	94
C.A.E.S.	13	6	19	15	18	33	11	21	32
Total Graduate Degrees Conferred	<u>572</u>	<u>567</u>	<u>1,139</u>	<u>555</u>	<u>627</u>	<u>1,182</u>	<u>547</u>	<u>639</u>	<u>1,185</u>
Total Undergraduate Degrees Conferred	<u>1,075</u>	<u>701</u>	<u>1,776</u>	<u>964</u>	<u>864</u>	<u>1,827</u>	<u>1,129</u>	<u>1,150</u>	<u>2,279</u>
TOTAL UNDERGRADUATE & GRADUATE DEGREES	<u>1,647</u>	<u>1,268</u>	<u>2,915</u>	<u>1,519</u>	<u>1,490</u>	<u>3,009</u>	<u>1,676</u>	<u>1,789</u>	<u>3,464</u>

*Sept.-Jan.-June

**Not available

***See page 104, "Degrees Conferred by Boston College"

Source: Office of the Registrar

UNDERGRADUATE FINANCIAL AID

1971-76

(thousands of dollars)

<u>Type of Aid</u>	<u>1971-72</u>	<u>1972-73</u>	<u>1973-74</u>	<u>1974-75</u>	<u>1975-76^{c/}</u>
Univ. Scholarships & grants	\$1,190	\$1,137	\$1,194	\$1,305	\$1,440
State Scholarships ^{a/}	895	827	868	793	850
Basic Educational Opportunity Grant	NA	NA	35	243	710
Supp. Educational Opportunity Grant	548	525	505	513	580
Work Study	550	820	1,179	908	1,400
N.D.S.L.	<u>1,342</u>	<u>1,653</u>	<u>1,603</u>	<u>1,738</u>	<u>2,210</u>
Subtotal	\$4,525	\$4,962	\$5,384	\$5,500	\$7,190
Other ^{b/}	<u>996</u>	<u>1,141</u>	<u>1,136</u>	<u>1,167</u>	<u>1,100</u>
TOTAL	<u>\$5,521</u>	<u>\$6,103</u>	<u>\$6,520</u>	<u>\$6,667</u>	<u>\$8,290</u>

^{a/} State scholarship funds to students from Massachusetts, Vermont, Connecticut, New Jersey, Pennsylvania, Rhode Island.

^{b/} Includes Black Talent and athletic programs

^{c/} Estimated

Source: Director of Financial Aid

UNDERGRADUATE FINANCIAL AID

1971-76
Number of Students

Type of Aid	Number of Students				
	1971-72	1972-73	1973-74	1974-75	1975-76 ^{d/}
Univ. Scholarships & grants	1,068	1,262	1,542	1,563	1,700
State Scholarships ^{a/}	1,069	960	1,016	941	1,000
Basic Educational Opportunity Grant	NA	NA	133	388	760
Supp. Educational Opportunity Grant	623	564	535	549	700
Work Study	627	898	1,019	884	1,350
N.D.S.L.	<u>1,445</u>	<u>1,629</u>	<u>1,638</u>	<u>1,719</u>	<u>2,030</u>
Subtotal	4,832	5,313	5,883	6,044	7,540
Other ^{b/}	<u>344</u>	<u>354</u>	<u>386</u>	<u>387</u>	<u>370</u>
TOTAL ^{c/}	<u><u>5,176</u></u>	<u><u>5,667</u></u>	<u><u>6,269</u></u>	<u><u>6,431</u></u>	<u><u>7,910</u></u>

a/ State scholarship funds to students from Massachusetts, Vermont, Connecticut, New Jersey, Pennsylvania, Rhode Island.

b/ Includes Black Talent and athletic programs

c/ This is not an unduplicated total since some students receive more than one type of aid.

d/ Estimated

Source: Director of Financial Aid

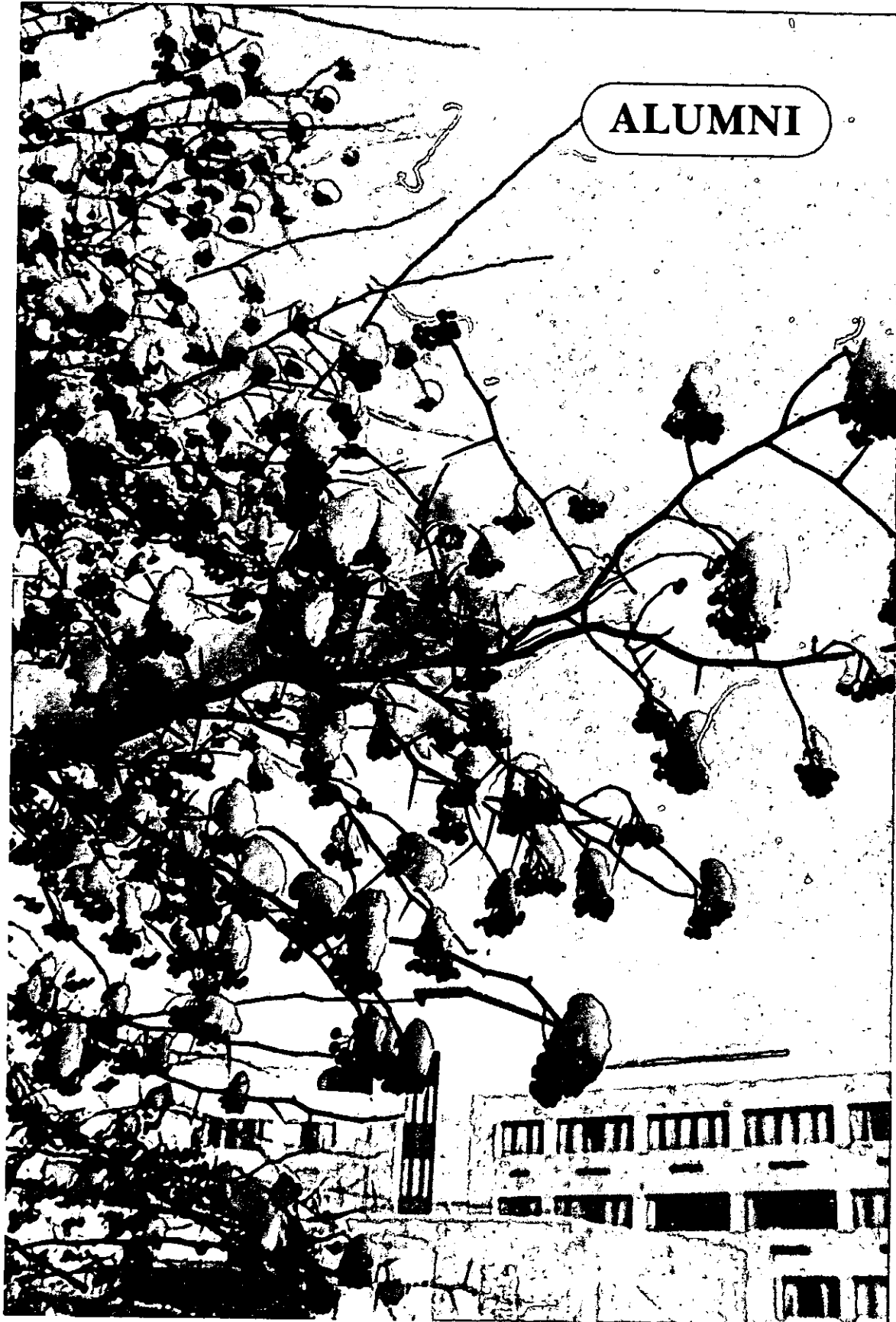
Boston College Health Services

<u>Number of Students Served</u>				
	<u>1972-73</u>	<u>1973-74</u>	<u>1974-75</u>	<u>1975-76</u>
<u>Clinic</u>				
Total visits to M.D.*	16,490	18,299	19,488	19,123
Total visits to R.N.	<u>9,645</u>	<u>7,763</u>	<u>9,879</u>	<u>10,671</u>
Totals	<u>26,135</u>	<u>26,062</u>	<u>29,367</u>	<u>29,794</u>
Men				(14,639)
Women				(15,155)
<u>Infirmary</u>				
Total admissions	567	485	637	604
Men	(335)	(255)	(226)	(266)
Women	(232)	(230)	(411)	(338)
Total patient days	1,370	1,130	1,329	1,367
Average daily census	5.5	5.4	6.1	6.2
Average length of stay (days)	2.3	2.3	2.1	2.2
Number of days in full operation	237	209	216	219

*Includes total admissions.

Source: Health Services Office

ALUMNI



ALUMNI
Geographic Analysis by State

Alabama	60	New Jersey	1,717
Alaska	26	New Mexico	39
Arizona	103	New York	4,076
Arkansas	12	North Carolina	147
California	1,136	North Dakota	10
Colorado	155	Ohio	612
Connecticut	2,775	Oklahoma	33
Delaware	96	Oregon	47
District of Columbia	452	Pennsylvania	839
Florida	584	Puerto Rico	82
Georgia	169	Rhode Island	1,239
Hawaii	47	South Carolina	47
Idaho	8	South Dakota	17
Illinois	649	Tennessee	80
Indiana	122	Texas	247
Iowa	44	Utah	16
Kansas	58	Vermont	246
Kentucky	95	Virginia	712
Louisiana	70	Virgin Islands	12
Maine	519	Washington	132
Maryland	894	West Virginia	64
Massachusetts	33,296	Wisconsin	166
Michigan	364	Wyoming	7
Minnesota	134	Foreign Nations	1,029
Mississippi	19	Inactive	3,158
Missouri	177	Lost	5,226
Montana	16		
Nebraska	25		
Nevada	13	TOTAL ACTIVE ALUMNI	60,042
New Hampshire	1,082	TOTAL ALUMNI	63,200*

*Includes 3,200 Newton College alumnae.

Source: Boston College Alumni Association

Alumni in New England

Metropolitan Boston	
Postal Areas 01701 - 02009	7,622
02101 - 02215	<u>16,999</u>
	24,621
Massachusetts outside Metropolitan Boston	<u>8,675</u>
Total Massachusetts Alumni	<u>33,296</u>
New England	
Connecticut	2,775
Maine	519
New Hampshire	1,082
Rhode Island	1,239
Vermont	<u>246</u>
Total New England outside Massachusetts	5,861
Massachusetts	<u>33,296</u>
Total New England	39,157
Total outside New England	<u>20,885</u>
TOTAL ACTIVE ALUMNI	<u><u>60,042</u></u>

Source: Boston College Alumni Association

Boston College Alumni Activities

Alumni Admissions	Anniversary Class Gift Program
Counselling	Regional Telethons
Alumni Resources for Current Students:	Fides
Career Counselling	Businessmen for Boston College
Guest Lecturing	Estate Planning Council
Student Internships	Parents' Committee
Summer Employment for Students	Foundations
Women's Resources	Nominations and Elections
The Alumni Seminar Series	Placement Services
Awards:	Publications & Communications:
Nominations-McKenney Award	Class Notes for <u>bridge</u>
Nominations-Alumni Awards of Excellence	Social Activities:
The Boston College Clubs	Family Day
Class Organizations & Activities	Homecoming
Continuing Education	Fall Football Tour
Development:	Holy Cross Pre-Game Brunch
New Heights Capital Campaign	Laetare Sunday Communion Breakfast
The Annual Fund	Alumni Golf Tournament
National Telethon	Spring European Tour
	Alumni Weekend

Source: Boston College Alumni Association

Boston College Alumni Clubs

Buffalo	New Hampshire
Cape Cod	New Jersey
Central New York	New Orleans
Chicago	Northern California (San Francisco)
Cincinnati	Pittsburgh
Cleveland	Philadelphia
Denver	Rhode Island
Detroit	Rochester
Fairfield County	St. Louis
Florida	San Diego
Hartford	Seattle
Long Island	Southeastern United States (Georgia)
North Shore	Toledo
Maine	Washington, D.C.
Manhattan Business Group	Western Massachusetts (Springfield)
Merrimack Valley	Wisconsin
Mid-Hudson	Worcester
Minnesota	
New Bedford	

Source: Boston College Alumni Association

NEW HEIGHTS CAMPAIGN LEADERSHIP

General Chairman

James P. O'Neill, '42
Senior Vice President
Xerox Corporation

Alumni Chairman

Robert J. O'Keefe, '51
Senior Vice President
Chase Manhattan Bank

Associate Chairmen

Edward J. King, '48
President
New England Council

Robert J. Richards, Jr., '52, J.D.'55
Attorney
Hale and Dorr

Foundations Chairman

John Lowell
Partner
Welch and Forbes

Corporations Chairman-New England

Thomas A. Sampson, '50
Managing Partner
Arthur Andersen & Company

Corporations Chairman-National

Joseph F. Abely, Jr., '50
Vice Chairman
General Foods Corporation

Bequests and Planned Giving Chairman

John G. McElwee, '43, J.D.'50
Executive Vice President & Secretary
John Hancock Mutual Life Insurance Co.

Law School National Chairman

Thomas M. Joyce, J.D.'41
Attorney
Joyce, Capeless, Kilroy, McNulty & Roddy
Executive Vice Chairman

Robert T. Capeless, J.D.'41
Attorney
Joyce, Capeless, Kilroy, McNulty & Roddy

Annual Fund Chairman

Paul J. McAdams, '57
Insurance Consultant
Mutual of New York

Communications Chairman

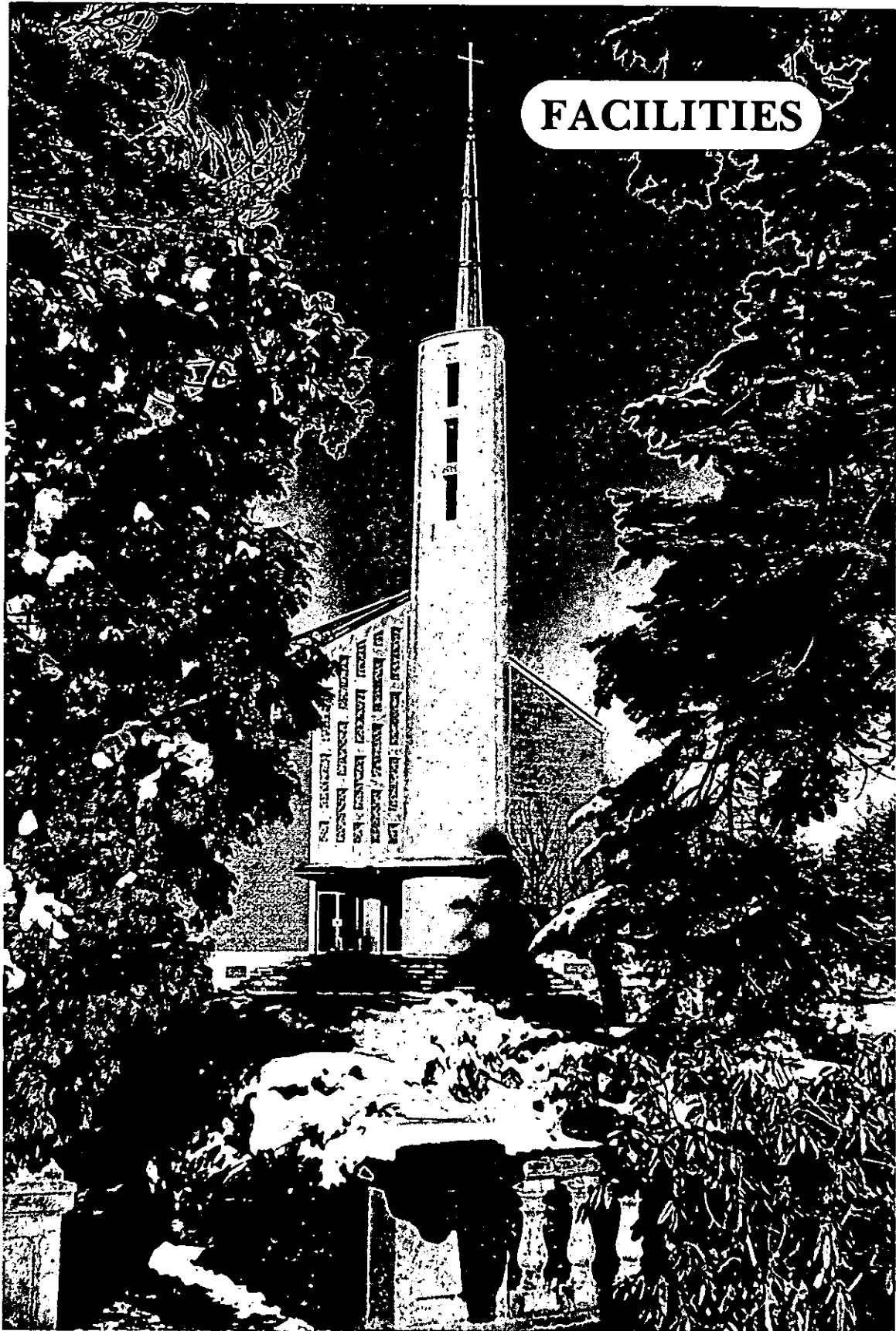
John M. Connors, Jr., '63
President
Hill, Holliday, Connors & Cosmopolous

Parents Chairman

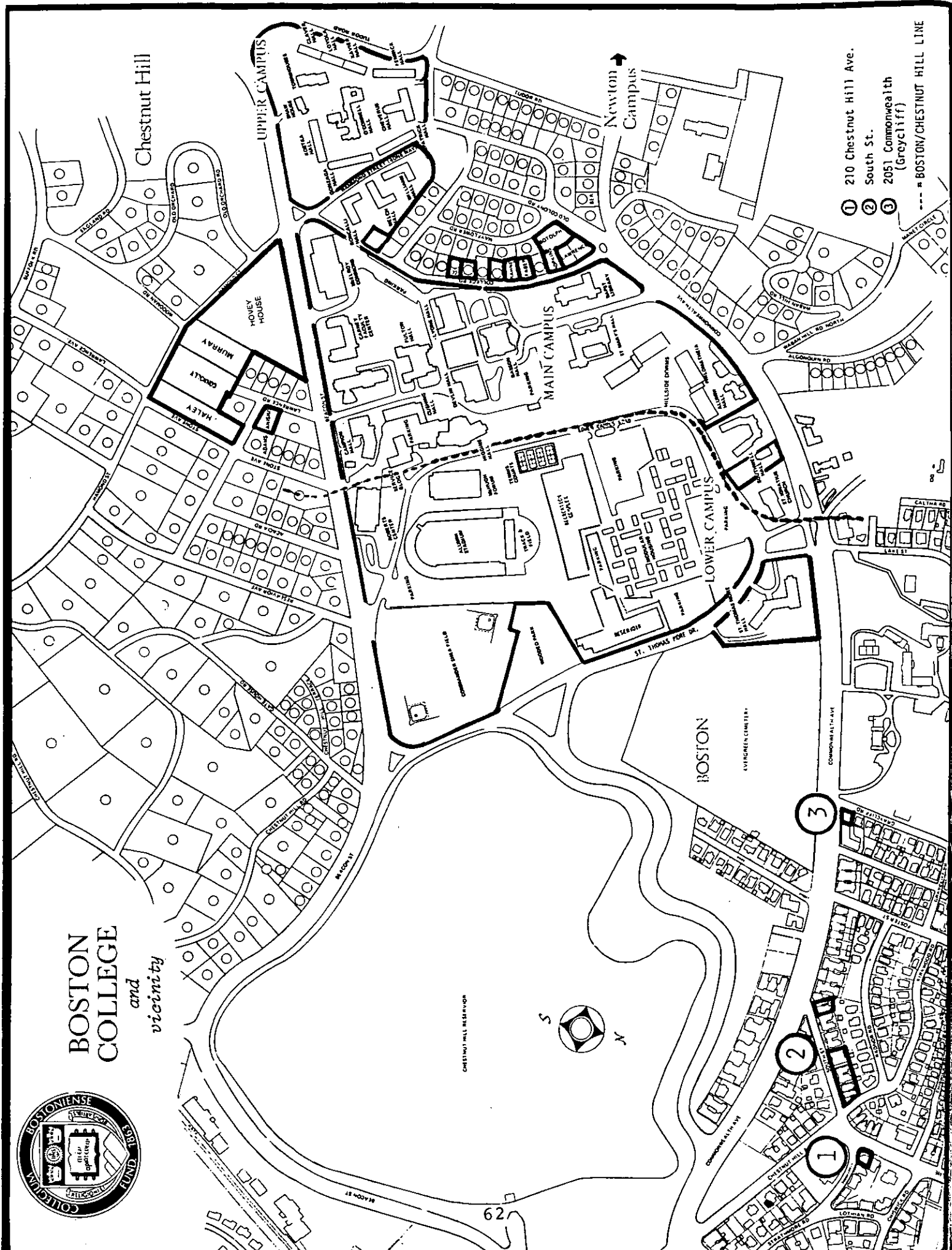
Curt Gowdy
Network Sportscaster
National Broadcasting Company

Source: Boston College New Heights Advancement Campaign

FACILITIES



BOSTON COLLEGE
and
vicinity



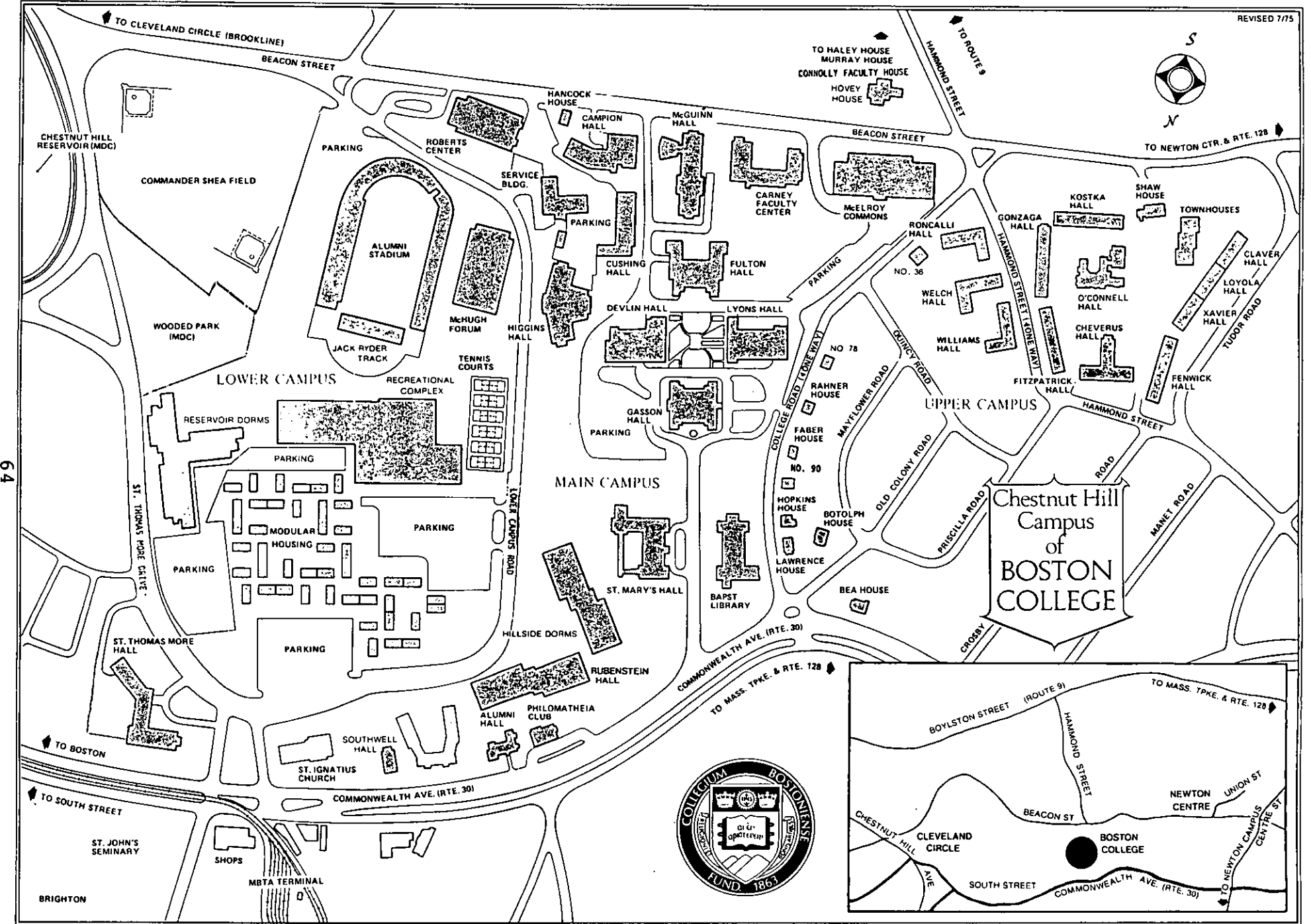
- ① 210 Chestnut Hill Ave.
- ② South St.
- ③ 2051 Commonwealth (Greycliff)
- BOSTON/CHESTNUT HILL LINE

Boston College Properties

Summary

	<u>Acres</u>	
Upper Campus	14.0	
Middle Campus	40.7	
Lower Campus	<u>55.9</u>	
	110.6	
Newton Campus	<u>40.2</u>	150.8
Outlying Properties		
Newton	8.4	
Boston	<u>1.2</u>	
		<u>9.6</u>
TOTAL PROPERTIES OWNED BY BOSTON COLLEGE		<u><u>160.4</u></u>

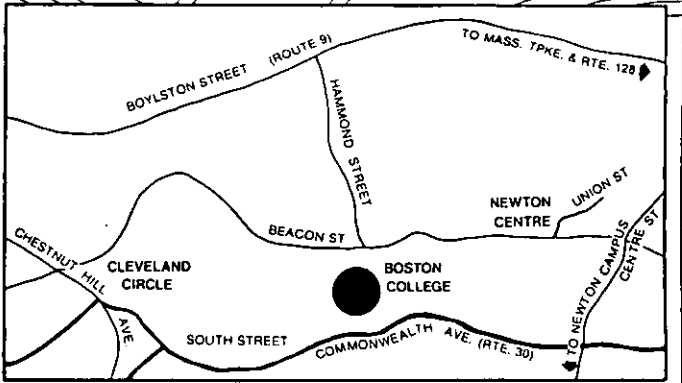
Sources: Engineering Dept., City of Newton
Assessing Engineering Dept., City of Boston

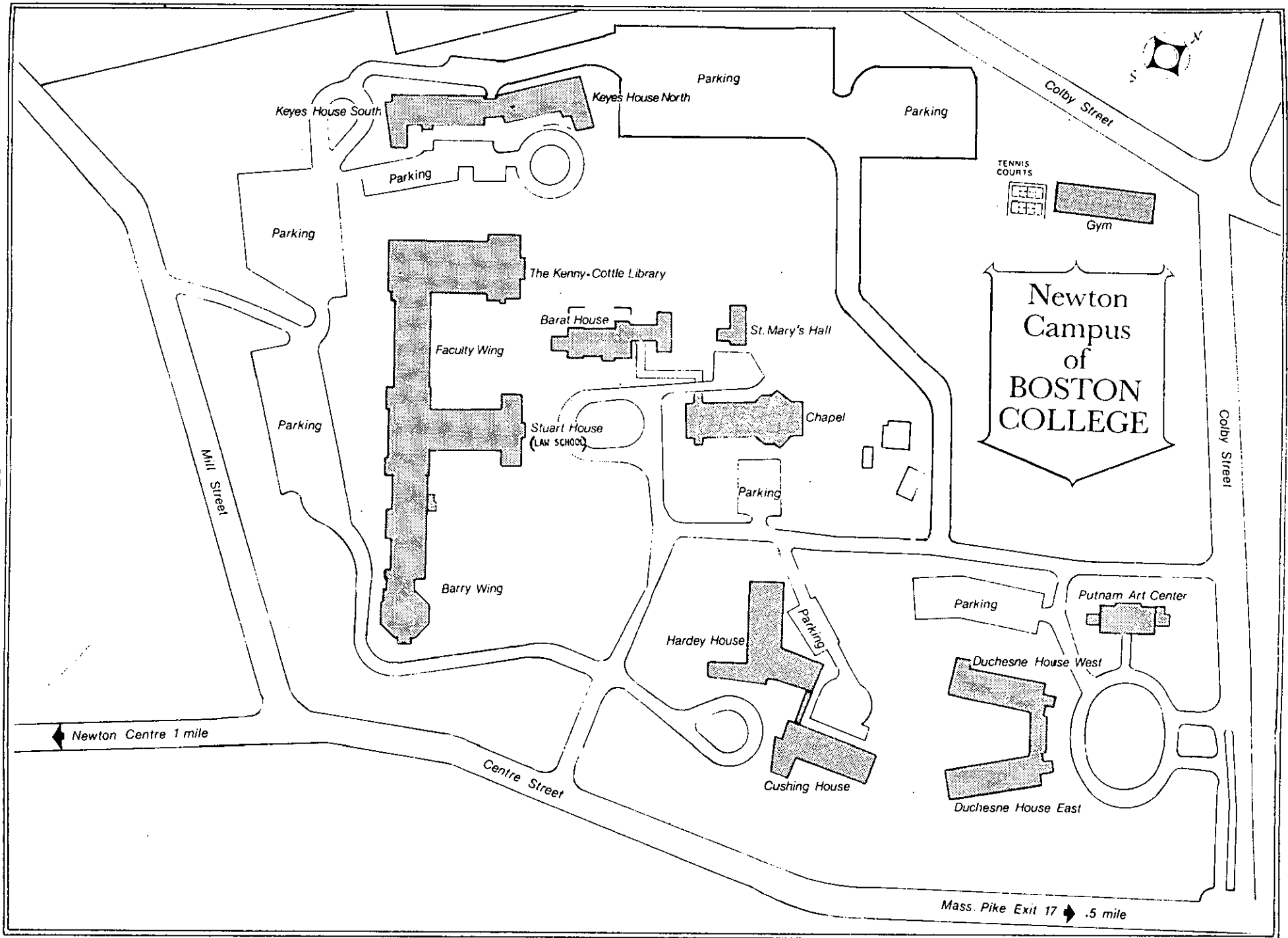


64



Chestnut Hill Campus of BOSTON COLLEGE





Boston College Properties

	<u>Square Feet</u>	<u>Acres</u>	
<u>UPPER CAMPUS</u>			
Roncalli-Welch-Williams	137,446	3.1	
O'Connell & Upper Dorms	<u>472,838</u>	<u>10.9</u>	
Total Upper Campus	610,284		14.0
 <u>MIDDLE CAMPUS</u>			
Area bounded by Beacon St., Lower Campus Rd., College Rd., Commonwealth Avenue- (including Hillside, Alumni, Philomatheia, Southwell)	1,677,845	38.5	
18 Old Colony Rd. (Botolph)	17,346	.4	
122 College Rd. (Lawrence)*	18,333	.4	
116 College Rd. (Hopkins)	7,349	.2	
102 College Rd. (Faber)	7,191	.2	
96 College Rd. (Rahner)	6,463	.1	
90 College Rd.	7,960	.2	
78 College Rd. (Brock)	6,308	.1	
72 College Rd.	7,100	.2	
36 College Rd.	9,126	.2	
176 Commonwealth (Bea)	<u>8,598</u>	<u>.2</u>	
Total Middle Campus	1,773,619		40.7
 <u>LOWER CAMPUS</u>			
Area bounded by Lower Campus Rd., Beacon St., & St. Thos. More Dr. (excluding MDC property)	2,279,266	52.3	
2150 Commonwealth Ave. (St. Thomas More Hall)	<u>156,575</u>	<u>3.6</u>	
Total Lower Campus	<u>2,435,841</u>		<u>55.9</u>
Total Upper, Middle & Lower Campuses	4,819,744		110.6
<u>NEWTON CAMPUS</u>	<u>1,751,112</u>		<u>40.2</u>
TOTAL CHESTNUT HILL & NEWTON CAMPUSES	<u>6,570,856</u>		<u>150.8</u>

*Two plots

	<u>Square Feet</u>	<u>Acres</u>
Total Chestnut Hill & Newton Campuses	6,570,856	150.8
<u>OUTLYING PROPERTIES</u>		
<u>Newton:</u>		
258 Beacon St. (Hovey)	178,390	4.1
292 Hammond St. (Murray)	50,554	1.2
300 Hammond St. (Connolly)	70,767	1.6
314 Hammond St. (Haley)	55,710	1.3
67 Lee Rd. (Canisius)	<u>10,436</u>	<u>.2</u>
	365,857	8.4
<u>Boston:</u>		
210 Chestnut Hill Ave. (Chestnut)	4,833	.1
2051 Commonwealth (Greycliff)	8,734	.2
5 South St. (Linden)	2,407	.1
9 South St. (Radnor)	3,164	.1
15 South St. (Pine)	3,759	.1
19 South St. (Kirkwood)	9,365	.2
25 South St. (Phelps)	9,288	.2
39-41 South St. (South)	<u>7,760</u>	<u>.2</u>
	<u>49,310</u>	<u>1.2</u>
TOTAL PROPERTIES OWNED BY BY BOSTON COLLEGE	<u>6,986,023</u>	<u>160.4</u>

Sources: Engineering Dept., City of Newton
Assessing Engineering Dept., City of Boston

Summary of Building Use

<u>Building Use</u>	<u>Number of Buildings</u>	<u>Percent of Total</u>
Student Residences ^{a/}	31	40%
Administrative	11	14
Administrative & Academic ^{b/}	14	18
Jesuit Residences	7	10
Miscellaneous use ^{c/}	<u>14</u>	<u>18</u>
TOTAL	<u>77</u>	<u>100%</u>

^{a/} Keyes North & South = 1
 Duchesne East & West = 1
 Hillside A & B = 1
 Hillside C & D = 1
 Modulars = 1

^{b/} Administrative and Academic = offices and classrooms

^{c/} Includes gymnasiums, libraries, student union, etc.

Source: Director of Space Management

BUILDINGS

Location and Primary Use

<u>Name</u>	<u>Location</u>	<u>Primary Use</u>
Alumni Hall	74 Commonwealth Ave.	Administrative
Alumni Stadium	Beacon Street	Sports
Bapst Library	Main Campus	Library
Barat House	Newton Campus	Jesuit Res. & Admin.
Bea House	176 Commonwealth Ave.	Jesuit Residence
Botolph House	18 Old Colony Road	Administrative
Brock House	78 College Road	Administrative
Campion Hall	Main Campus	Academic & Admin.
Canisius House	67 Lee Road	Jesuit Residence
Carney Hall	Main Campus	Academic & Admin.
Chapel (Newton)	885 Centre St.	Chapel
Chestnut Hall	210 Chestnut Hill Ave.	Student Residence
Cheverus Hall	127 Hammond St.	Student Residence
Claver Hall	40 Tudor Road	Student Residence
---	72 College Rd.	Jesuit Residence
---	90 College Rd.	Administrative
Connolly Faculty House	300 Hammond St.	Administrative
Caretaker's Cottage	885 Centre St.	Residence
Cushing Hall	Main Campus	Academic & Admin.
Cushing House	885 Centre St.	Student Residence
Devlin Hall	Main Campus	Academic & Admin.
Duchesne East	885 Centre St.	Student Residence
Duchesne West	885 Centre St.	Student Residence
Faber House	102 College Road	Jesuit Residence
Faculty Wing	885 Centre St.	Academic & Admin.
Fenwick Hall	46 Tudor Road	Student Residence
Fine Arts Center (Barry Wing)	885 Centre St.	Academic
Fitzpatrick Hall	137 Hammond St.	Student Residence
Fulton Hall	Main Campus	Academic & Admin.
Gasson Hall	Main Campus	Academic & Admin.

Continued. . .

<u>Name</u>	<u>Location</u>	<u>Primary Use</u>
Gonzaga Hall	149 Hammond St.	Student Residence
Greycliff Hall	2051 Commonwealth Ave.	Student Residence
Haley House	314 Hammond St.	Residence
Hancock House	223 Beacon St.	Residence
Hardey House	885 Centre St.	Student Residence
Higgins Hall	Main Campus	Academic & Admin.
Hillside A	100 Commonwealth Ave.	Student Residence
Hillside B	100 Commonwealth Ave.	Student Residence
Hillside C (Renamed Rubenstein Hall)		
Hillside D	100 Commonwealth Ave.	Student Residence
Hopkins House	116 College Road	Administrative
Hovey House	258 Beacon St.	Residence
Kenny-Cottle Lib.	885 Centre St.	Library
Keyes North	885 Centre St.	Student Residence
Keyes South	885 Centre St.	Student Residence
Kirkwood Hall	19 South St.	Student Residence
Kostka Hall	149 Hammond St.	Student Residence
Lawrence House	122 College Rd.	Administrative
---	36 College Road	Administrative
Linden Hall	5 South St.	Student Residence
Loyola Hall	42 Tudor Rd.	Student Residence
Lyons Hall	Main Campus	Academic & Admin.
McElroy Commons	Main Campus	Student Services* & Admin.
McGuinn Hall	Main Campus	Academic & Admin.
McHugh Forum	Lower Campus	Ice Skating rink
Mill St. Cottage	Newton Campus	Residence
Modulars	Lower Campus	Student Residence
Murray House	292 Hammond St.	Commuter Center
O'Connell Hall	185 Hammond St.	Student Union
Phelps Hall	25 South St.	Student Residence
Philomatheia Hall	86 Commonwealth Ave.	Administrative
Pine Hall	15 South St.	Student Residence
Putnam Center	885 Centre St.	Art Center
Quonset Hut	885 Centre St.	Gymnasium

*Student services in McElroy Commons include bookstore, dining, halls, mail room

<u>Name</u>	<u>Location</u>	<u>Primary Use</u>
Radnor Hall	9 South St.	Student Residence
Rahner House	96 College Road	Jesuit Residence
Recreation Complex	Lower Campus	Sports
Reservoir Dorm	200 St. Thos. More Dr.	Student Residence
Roberts Center	Main Campus	Academic & Admin. & Gymnasium
Roncalli Hall	182 Hammond St.	Student Residence
Rubenstein Hall	90 Commonwealth Ave.	Student Residence
Service Building	Main Campus	Admin. & Trade Shops
Shaw House	377 Beacon St.	Student Residence
Shea Field	Beacon St.	Baseball Diamond
South Hall	39-41 South St.	Student Residence
Southwell Hall	38 Commonwealth Ave.	Administrative
St. Mary's Hall	Main Campus	Jesuit Residence
St. Mary's Hall	885 Centre St.	Academic & Admin.
St. Thomas More Hall	St. Thos. More Drive	Administrative
Stuart House	885 Centre St.	Academic & Admin. (Law School)
Townhouse	60 Tudor Rd.	Student Residence
Welch Hall	200 Hammond St.	Student Residence
Williams Hall	143 Hammond St.	Student Residence
Xavier Hall	44 Tudor Rd.	Student Residence
<u>Leased Facilities:</u>		
---	370 Chestnut Hill Ave.	Student Residence

*Academic & Admin.= classrooms and offices

Source: Director of Space Management

Dormitories

		<u>Living Units</u>	<u>Students</u>	<u>Staff</u>	<u>Total</u>
<u>Chestnut Hill</u>					
<u>Upper Campus:</u>					
Cheverus	127 Hammond St.	67	129	5	134
Claver	40 Tudor Rd.	40	74	3	77
Fenwick	46 Tudor Rd.	74	139	4	143
Fitzpatrick	137 Hammond St.	73	138	4	142
Gonzaga	149 Hammond St.	79	151	3	154
Kostka	149 Hammond St.	78	150	3	153
Loyola	42 Tudor Rd.	52	98	3	101
Roncalli	182 Hammond St.	70	131	6	137
Shaw	377 Beacon St.	10	18	3	21
Townhouse	60 Tudor Rd.	51	98	3	101
Welch	200 Hammond St.	77	146	5	151
Williams	142 Hammond St.	72	138	4	142
Xavier	44 Tudor Rd.	38	72	2	74
		<u>781</u>	<u>1,482</u>	<u>48</u>	<u>1,530</u>
<u>Lower Campus:</u>					
Hillside A	100 Commonwealth Ave.	108	210	3	213
Hillside B	100 Commonwealth Ave.	80	152	4	156
Hillside D	90 Commonwealth Ave.	96	188	2	190
Modulars	St. Thomas More Drive	258	502	6	508
Reservoir	200 St. Thos. More Dr.	408	792	10	802
Rubenstein	90 Commonwealth Ave.	90	174	3	177
		<u>1,040</u>	<u>2,018</u>	<u>28</u>	<u>2,046</u>
<u>Newton Campus:</u>					
Cushing	885 Centre Street	64	119	3	122
Duchesne E.	"	70	133	3	136
Duchesne W.	"	67	116	4	120
Hardey	"	96	176	4	180
Keyes N.	"	74	138	4	142
Keyes S.	"	57	101	4	105
Stuart House	"	8	14	-	14
		<u>436</u>	<u>797</u>	<u>22</u>	<u>819</u>

Dormitories

		<u>Living Units</u>	<u>Students</u>	<u>Staff</u>	<u>Total</u>
<u>Off-Campus:</u>					
Chestnut Hall	210 Chestnut Hill Ave.	19	34	2	36
Greycliff	2051 Commonwealth Ave.	49	44	2	46
Kirkwood	19 South St.	34	57	2	59
Linden	5 South St.	11	17	1	18
Phelps	25 South St.	8	13	1	14
Pine	15 South St.	11	22	1	23
Radnor	9 South St.	11	20	1	21
South	39-41 South St.	<u>29</u>	<u>48</u>	<u>2</u>	<u>50</u>
		172	255	12	267
<u>Leased Facilities:</u>					
-----	370 Chestnut Hill Ave.	25	108	2	110
TOTALS		<u>2,454</u>	<u>4,660</u>	<u>112</u>	<u>4,772</u>

Source: Director of Space Management

Classrooms

<u>Building</u>	<u>Number of Classrooms</u>	<u>Stations</u>	1975-76 % Space Usage <u>9:00 am - 5:00 pm*</u>
Campion	15	823	91%
Carney	25	1,042	91%
Cushing	13	878	98%
Devlin	2	298	77%
Fine Arts Ctr. ^{b/} (Barry Wing)	5	490	--
Fulton	16	1,204	91%
Gasson ^{a/}	18	1,045	--
Higgins	9	603	87%
Kenny-Cottle Lib.	1	125	--
Lyons	11	608	70%
McGuinn	16	582	70%
St. Thomas More ^{b/}	6	255	43%
Stuart	9	704	--
TOTALS	<u>146</u>	<u>8,657</u>	

^{a/} As of September 1977

^{b/} Temporary

Sources: Director of Space Management
*Office of the Registrar

Offices

<u>Building</u>	<u>No. of Offices</u>
<u>Chestnut Hill:</u>	
Alumni Hall	8
Bapst Library	8
Botolph House	12
Brock House	7
Campion Hall	56
Carney Hall	222
Cushing Hall	43
Devlin Hall	40
Fulton Hall	56
Gasson Hall*	32
Higgins Hall	53
Hopkins House	11
Lawrence House	10
36 College Rd.	9
Lyons Hall	75
McElroy Commons	32
McGuinn Hall	184
Philomatheia Hall	12
Roberts Center	24
Rubenstein Hall	12
Service Building	10
Southwell Hall	26
St. Thomas More Hall	58
subtotal	<u>1,000</u>
<u>Newton Campus:</u>	
Barat House	9
Faculty Wing	21
Kenny-Cottle Library	8
Putnam Center	3
Stuart House	61
St. Mary's Hall	8
Barry Wing	25
subtotal	<u>135</u>
<u>TOTAL OFFICES</u>	<u><u>1,135</u></u>

*September, 1977

Source: Director of Space Management

Dining Facilities

<u>Name</u>	<u>Location</u>	<u>Capacity</u>
Eagle's Nest Snack Bar	McElroy Commons	500
Faculty Dining Room	McElroy Commons	175
Kirkwood Cafeteria	Kirkwood Hall	125
Lyons Cafeteria	Lyons Hall	550
McElroy Dining Hall	McElroy Commons	1000
Newton Campus Cafeteria	Stuart House	300
Newton Campus Snack Bar	Stuart House	200
Snake 'n' Apple	Lower Campus	90
Trustees' Room	McElroy Commons	<u>40</u>
TOTAL CAPACITY		<u><u>2980</u></u>

Source: Dining Department

FINANCE



Revenues and Expenditures
(thousands of dollars)

	<u>1973-74</u>	<u>1974-75</u>
<u>Revenues</u>		
Tuition and Fees	\$27,398	\$30,201
Contracts and Grants	7,082	7,650
Organized Activities	1,148	1,327
General:		
Gifts, investments and other income	1,786	2,034
Auxiliary Enterprises	<u>5,718</u>	<u>7,778</u>
Total Revenues	<u>\$43,132</u>	<u>\$48,990</u>
 <u>Expenditures</u>		
Educational and General:		
Instructional	\$13,651	\$15,420
Organized Activities	1,926	2,158
Sponsored Research	5,721	5,709
Other	11,601	13,429
Mandatory transfers: interest, principal, loan funds, plant loans	<u>944</u>	<u>432</u>
	\$33,843	\$37,148
Auxiliary Enterprises:		
Expenditures	5,504	7,071
Principal and Interest	990	1,272
Other Transfers:		
Plant replacement, construction and loan funds	<u>2,683</u>	<u>3,221</u>
Total Expenditures	<u>\$43,020</u>	<u>\$48,712</u>

Source: Office of the Financial Vice President

Contracts and Grants
by Source of Funding

(thousands of dollars)

	<u>1970-71</u>	<u>1971-72</u>	<u>1972-73</u>	<u>1973-74</u>	<u>1974-75</u>
<u>REVENUES</u>					
Sponsored Research	\$3,044	\$3,071	\$2,988	\$2,885	\$3,409
Other Programs Sponsored	<u>2,612</u>	<u>3,037</u>	<u>3,176</u>	<u>3,652</u>	<u>4,241</u>
TOTALS	<u>\$5,656</u>	<u>\$6,108</u>	<u>\$6,164</u>	<u>\$6,537</u>	<u>\$7,650</u>
<u>SOURCES OF FUNDING</u>					
Federal Government	\$5,078	\$5,062	\$5,485	\$5,542	\$6,413
State Government	115	312	229	252	418
Local Government	153	210	91	147	137
Non-Government	<u>310</u>	<u>524</u>	<u>359</u>	<u>596</u>	<u>682</u>
TOTALS	<u>\$5,656</u>	<u>\$6,108</u>	<u>\$6,164</u>	<u>\$6,537</u>	<u>\$7,650</u>

Source: Controller's Office

Summary of Contract and Grant Awards
1975-76

	<u>No. of Awards</u>	<u>Award Total</u>
Biology Department	7	\$ 156,275
Chemistry Department	7	275,258
Economics Department	1	18,596
Education	14	1,078,806
Geology Department	2	50,945
History Department	1	18,207
Laboratory of Psycho- Social Studies	2	121,870
Law School	3	189,038
Management	3	35,460
Math Department	1	6,982
Nursing	5	859,926
Philosophy Department	1	64,193
Physics Department	11	408,247
Psychology Department	1	4,700
Social Welfare Regional Research Institute	5	342,255
Social Work	6	305,547
Space Data Analysis Lab	7	1,009,472
Weston Observatory	10	1,042,919
Miscellaneous	<u>5</u>	<u>324,653</u>
Subtotal	<u>92</u>	\$ 6,313,349
Student Aid		<u>\$ 3,110,461</u>
TOTAL		<u>\$ 9,423,810</u>

Source: Office of Research Administration

A Sample of Sponsored Programs*

Genetics and Biochemistry of Neurological Mutants	Management Assistance to Small Business Concerns
Practical Synthesis of the Anticancer Drug Adriamycin	The Global Properties of Real and Connected K-Theories
Pre-School Teacher Consultant for Visually Handicapped Children	B.C. - Harvard Medical School Program in Maternal and Child Health
Study of Correlation of Onshore-Offshore Sediment Movement	Analysis of Factors Influencing Implementation of Health Plans
Research Fellowship to Study Role of Women in Society	Determination of the Global Ionospheric Current Distribution Produced by Birkeland Currents
Community Effectiveness Study	Biomedical Research Support Grant
Perspectives on Western Culture	U.S./Spain Solar Energy Conversion Project
Study of Recent AFDC State Benefits and Caseload Dynamics	Labor Demand Stimulation Alternatives
Ionospheric Research	Training for Industrial Alcoholism Programs
Investigate and Determine Geokinetic Environment	Pennsylvania Coal-Bearing Strata of Narragansett Basin
Study and Analysis of Satellite Data	Upward Bound Programs National Youth Sports Camp

*Since B.C. has over 160 sponsored programs, this list is merely a random selection to indicate the diversity of such programs.

Source: Office of Research Administration

Purchasing Department
Documents Processed
1973-76

	<u>1973-74</u>	<u>% chg.</u>	<u>1974-75</u>	<u>% chg.</u>	<u>1975-76</u>	<u>% chg.</u>
Total Requisitions	7,816	+4.1	8,988	+15.0	9,707	+8.0
Total Items	18,381	+3.2	20,837	+13.4	22,564	+8.3
Avg. per Requisition	2.35		2.34		2.35	
Purchase Orders	7,370	+5.2	8,674	+17.7	8,543	-1.6
Items	15,404	+8.1	20,815	+35.1	19,157	-8.3
Avg. per P.O.	2.09		2.40		2.24	
No. of Invoices	16,069	+6.1	18,190	+13.2	21,474	+18.0
No. of Items	31,459	+10.2	38,097	+21.1	43,710	+14.7
Avg. per Invoice	1.96		2.09		2.03	
\$ value of Invoices*	\$3,916	+12.8	\$5,857	+49.6	\$8,769	+49.7
Avg. value per item	\$124.48		\$153.75		\$200.62	
Total Documents	31,255	+5.4	35,852	+14.7	39,855	+11.2
Total Items	65,244	+7.3	79,747	+22.2	85,431	+7.1
Avg. Items per Document	2.09		2.22		2.14	
Daily Avg. Documents	127		146	+15.0	163	+11.6
Daily Avg. Items	265		325	+22.6	350	+7.7

*Thousands of dollars

Source: Purchasing Department

LIBRARIES



BOSTON COLLEGE LIBRARIES

Bapst Library	Main Library, Middle Campus
School of Nursing Library	Cushing Hall, 4th Floor
Science Library	Devlin Hall, Rooms 103 - 108
School of Social Work Library	McGuinn Hall Basement
School of Management Library.	Fulton Hall, 2nd Floor
Law School Library.	Kenny-Cottle Library, Newton Campus
Resource Center (Undergraduate)	Kenny-Cottle Library, Newton Campus
Geophysics Library.	Weston Observatory, Weston, Mass.

Library Hours

	Mon.-Fri.		Saturday		Sunday	Summer		
	am	pm	am	pm	pm	am	pm	
Bapst	8:30	11:00	11:00	11:00	11:00am	11:00	8:30	9:00 ^c
Science	8:30	11:00 ^a	9:00	5:00	1:00pm	10:00	9:00	5:00
Management	8:30	10:00	9:00	5:00	2:00pm	10:00	9:00	9:00
Social Work	9:00	11:00 ^b	9:00	5:00	1:00pm	10:00	9:00	5:00
Law	8:00	12M	9:00	12M	10:00am	12M	Closed	
Resource Ctr.	8:00	12M	9:00	12M	10:00am	12M	9:00	5:00
Geophysics	9:00	5:00	Closed		Closed		9:00	5:00
Nursing	9:00	11:00 ^b	9:00	5:00	1:00pm	11:00	9:00	5:00

^{a/} Friday - 8:30am-9:00pm

^{b/} Friday - 9:00am-7:00pm

^{c/} Saturday - 8:30am-12 noon

Source: University Librarian

Holdings by Individual Libraries

1976

<u>Library</u>	<u>Books</u>	<u>Periodicals</u>	<u>Microfilm</u>
Bapst	614,170*	2,119	184,178
Law	114,165	657	61,650
School of Mgmt.	68,940	731	9,647
School of Nursing	28,926	585	2,487
Science	53,263	512	8,134
Weston	9,948	57	54
Social Work	16,542	231	72
Resource Center	27,500	0	0
TOTALS	<u>933,454</u>	<u>4,892</u>	<u>266,222</u>

*Includes 67,500 acquired from Newton College.

Source: University Librarian

Expenditures for Books
1976

<u>Library</u>	<u>1972-73</u>	<u>1973-74</u>	<u>1974-75</u>	<u>1975-76</u>
Bapst	\$354,650	\$324,884	\$315,246	\$350,150
Law	66,000	74,000	85,000	92,704
Management	21,670	21,110	28,850	29,757
Nursing	10,230	9,300	19,900	19,500
Science	42,500	50,390	58,000	68,080
Social Work	<u>4,950</u>	<u>4,500</u>	<u>5,500</u>	<u>6,300</u>
TOTALS	<u>\$500,000</u>	<u>\$484,184</u>	<u>\$512,496</u>	<u>\$566,491</u>

Source: University Librarian

Volume Acquisitions
(all libraries)

<u>Year</u>	<u>Number</u>
1968-69	33,963
1969-70	34,206
1970-71	36,262
1971-72	34,758
1972-73	40,835
1973-74	29,945
1974-75	25,770*
1975-76	31,091
TOTAL	<u>266,830*</u>

Circulation Statistics

<u>Year</u>	<u>Student</u>	<u>Faculty</u>	<u>Inter- library loans</u>	<u>Reserve</u>	<u>Total</u>
1970-71	130,148	13,123	1,516	10,237	155,024
1971-72	132,368	14,307	1,520	17,848	166,043
1972-73	141,230	10,199	951	19,688	172,068
1973-74	171,321	11,052	2,451	38,137	222,961
1974-75	114,688	10,030	2,576	36,976	164,270
1975-76	113,395	11,577	2,887	96,906	224,765

*Excluding addition of 67,500 from Newton Library.

Source: University Librarian

BOSTON COLLEGE LIBRARIES

-SPECIAL COLLECTIONS-

Many rare and valuable materials are included in special collections, ranging from medieval manuscripts to modern limited editions. The libraries also possess an extensive collection of letters and autographs. Of particular note are items by James Jeffery Roche, and letters of Presidents Theodore Roosevelt and Grover Cleveland, Samuel Clemens, Douglas Hyde, Cardinal Newman, and Rufus King. All special collections are restricted in use because of their rare or valuable nature. The following is a brief description of some of the outstanding special collections.

THE FRANCIS THOMPSON COLLECTION

This, the most complete collection of Thompsoniana in existence, includes notebooks, manuscripts, letters, and rare editions and collateral material relating to the poet, his times, and his work. The notebooks are the chief source of clues to the identification of 300 of Thompson's unsigned contributions to periodicals.

MEYNELL COLLECTION

Works of Wilfrid and Alice Meynell and their children--Viola, Sir Francis, and Everard, are included in this collection. The items give a well-rounded view of this remarkable family as poets, fiction writers, essayists, biographers, prefacers, and editors.

PATMORE COLLECTION

This collection includes manuscripts, poems, correspondence, articles, and book reviews of Coventry Patmore, an English poet, essayist, and critic, and a good friend of Francis Thompson. Among the correspondents are Robert Browning, Alfred Tennyson, Matthew Arnold, Ralph Waldo Emerson, Nathaniel Hawthorne, Thomas Carlyle, and William Makepeace Thackeray.

IRISH COLLECTION

Nearly every aspect of Irish history and literature are covered in this collection. Items of special interest are the many papers of Patrick Andrew Collins, president of the Irish Land League, and letters of Jeremiah O'Donovan Rossa, poet, editor, and leader of the Fenian and related organizations. Holdings also include a facsimile of the famous illuminated manuscript of the Gospels; the Book of Kells; a complete volume of Malton's Views of Dublin, 1799; The Ordnance Surveys; a complete set of the Irish Bulletin; and Colgan's Acta Sanctorum Hiberniae describing the lives of the Irish saints.

JESUITANA

This is a collection of early and rare works by and about Jesuits. It includes Lettere e Relazione Orientale, a Jesuit missionary's annual letters from Cochinchina, Tibet, Japan, China, etc., published in Italy, between 1590 and 1661. A particularly rare item is a letter of St. Francis Xavier dictated, signed, and addressed by the saint to Don John III, King of Portugal.

NICHOLAS M. WILLIAMS MEMORIAL ETHNOLOGICAL COLLECTION

Approximately 10,000 books and pamphlets are contained in this collection which comprises Africana, Caribbeana, and Judaica, with special subject strength in Jamaicana.

THOMAS MERTON COLLECTION

This collection includes, as gifts from the author, the original typescript and galleys of The Seven Storey Mountain, galleys of The Waters of Siloe and his own copy of Poetry and Prose of William Blake. There are also volumes by Merton - several of them autographed, and forty periodicals containing the first printing of poems and essays, many of them uncollected.

MORRISSEY MEMORIAL COLLECTION OF JAPANESE PRINTS

This collection is of particular value to those interested in the study of the history of Japanese art. This collection is composed of more than 100 prints, paintings, and reproductions, as well as Japanese artifacts and several books. Valuable inclusions in this collection are the landscape designs of Ando Hiroshige (1797-1858) and Katsushika Hokusai (1760-1849).

THE BOSTON COLLEGE GUILD OF ST. LUKE OF BOSTON MEDICAL ETHICS COLLECTION

Initiated in 1974, this contains books, pamphlets, periodicals, reprints and tapes which concern the ethics of medicine and health care.

RITA P. KELLEHER COLLECTION

This collection recognizes the contribution of Miss Kelleher, who retired after serving twenty-five years on the School of Nursing faculty, and twenty years as Dean of the School. It consists of archival, historical, research, and other significant materials in Nursing.

Source: The Boston College Libraries Handbook

BOSTON COLLEGE LIBRARIES

DATA BASES AVAILABLE

Educational, Psychological, and Social Science Data Bases

American History and Life (AHL)
American Statistics Index (ASI)
Congressional Information Service (CIS)
ERIC
HISTORICAL ABSTRACTS
Language and Language Behavior Abstracts (LLBA)
PSYCHOLOGICAL ABSTRACTS
SOCIAL SCISEARCH
Sociological Abstracts (SOCABS)

Business and Management Data Bases

ABI/INFORM
Chemical Industry Notes (CIN)
Predicasts (PTS)

Scientific and Technical Data Bases

Biological Abstracts (BIOSIS)
CA-CONDENSATES
Chemical Abstracts Subjects Index Alert (CASIA)
CHEMNAME
Engineering Index (COMPENDEX)
Bibliography and Index of Geology (GEO-REF)
Physics, Electronics, Computer and Control Abstracts (INSPEC)
Index Medicus (MEDLINE)
Metals Abstracts Index and Alloys Index (METADEX)
METEOROLOGICAL AND GEOASTROPHYSICAL ABSTRACTS
OCEANIC ABSTRACTS
Pollution Abstracts (POLLUTION)
Science Citation Index (SCISEARCH)
Searchable Physics Information Notices, American Institute of
Physics (SPIN)
WORLD ALUMINUM ABSTRACTS

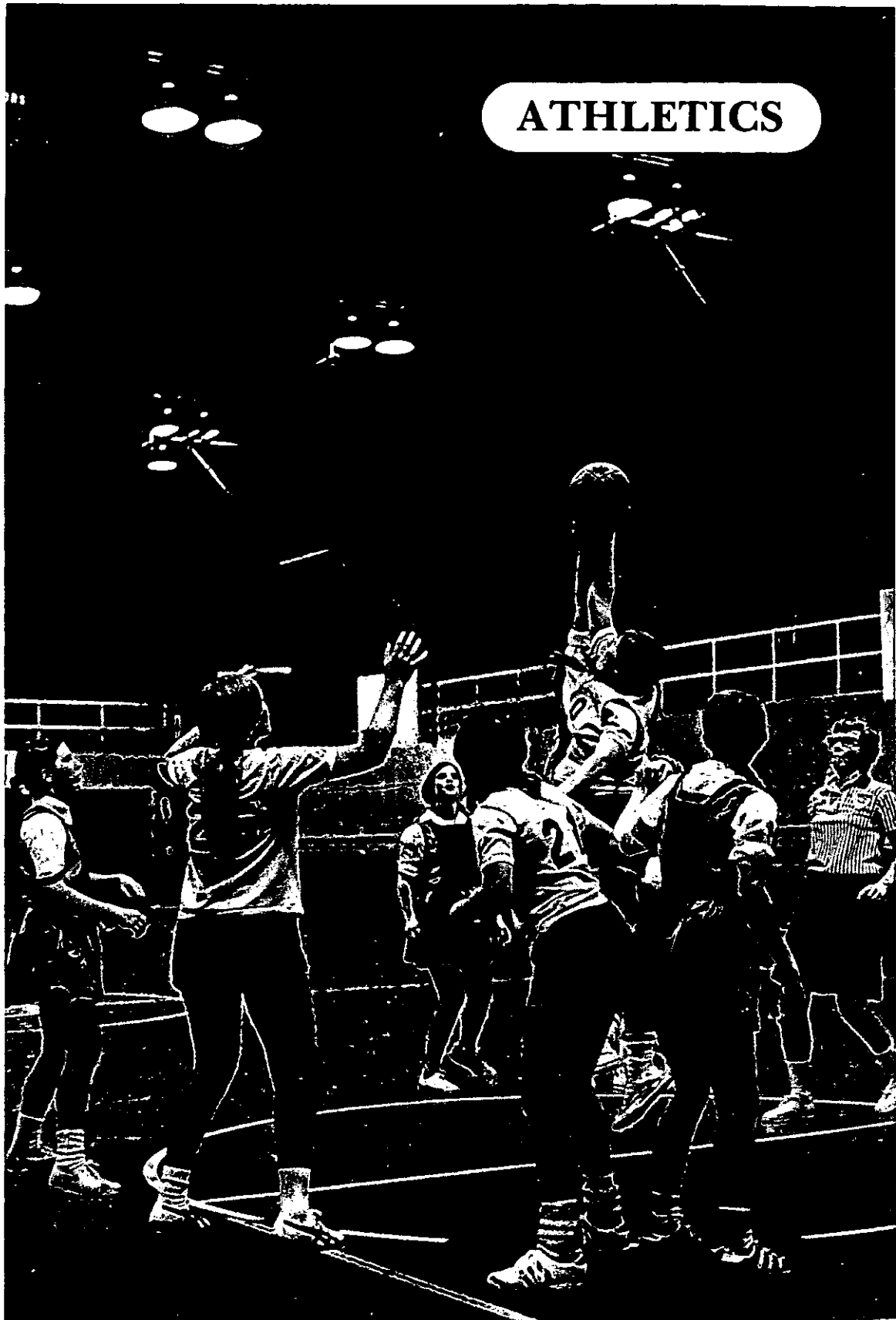
Multidisciplinary Data Bases

DISSERTATION ABSTRACTS
FOUNDATION DIRECTORY
FOUNDATION GRANTS INDEX
National Technical Information Service, Government Reports
Announcements (NTIS)
SMITHSONIAN SCIENTIFIC INFORMATION EXCHANGE

Note: Computer searches of data bases available through Boston College Libraries' computer service. For more information contact reference librarian.

Source: University Librarian

ATHLETICS



Sports at Boston College

Men's Varsity

Football
Ice Hockey
Basketball
Baseball
Track
Soccer
Lacrosse
Golf
Tennis
Wrestling
Skiing
Sailing

Women's Varsity

Volleyball
Basketball
Field Hockey
Swimming
Tennis
Fencing
Golf

Men's Intramurals

Flag Football
Tennis Doubles
Tennis Singles
Racketball Doubles
Racketball Singles
Handball
Ice Hockey
Volleyball
Cross Country
Basketball
Squash
Water Basketball

Women's Intramurals

Tennis Singles
Paddleball
Basketball

Coed Intramurals

Ping Pong
Volleyball
Swimming
Track

Sports at Boston College

Lessons

Tennis
Fencing
Figure Skating
Gymnastics
Modern Dance
Exercise
Golf
Squash
Swimming

Clubs

Men's Swimming
Men's Water Polo
Women's Water Polo
Women's Ice Hockey

Source: Director of Sports Information

Varsity Sports Records
1973-1975

	<u>1973-74</u>	<u>1974-75</u>	<u>1975-76</u>
<u>Men's Records</u>			
Football	7- 4	8- 3	7- 4
Basketball	11-14	21- 9	9-17
Ice Hockey	22- 7 (T-1)	16-12	15-13 (T-1)
Wrestling	2- 6	8- 8	5- 5
Soccer	3- 9 (T-1)	6- 8 (T-1)	4-11 (T-1)
Lacrosse	10- 1	8- 2	7- 4
Tennis	17- 1	4- 1	10- 5
Baseball	17- 9 (T-1)	13-12	10-13
Swimming	4- 6	8- 0	11- 0
Golf	8- 6	7- 7	10- 4
<u>Women's Records</u>			
Basketball	4- 6	9- 2	7- 5
Field Hockey	2- 2	4- 0	7- 1
Swimming	8- 3	6- 2	11- 0
Tennis	3- 3	4- 2	11- 2
Volleyball	0- 8	2- 8	6- 5

Source: Director of Sports Information

BOSTON COLLEGE FOOTBALL SCHEDULE
1976-1978

		<u>HOME</u>	<u>AWAY</u>
<u>1976</u>	Sept. 11	Univ. of Texas	-
	25	-	Tulane
	Oct. 2	-	Navy
	9	Florida State	-
	16	West Virginia	-
	23	-	Army
	30	-	Villanova
	Nov. 6	-	Miami
	13	Syracuse	-
	20	-	Massachusetts
27	Holy Cross	-	
<hr/>			
<u>1977</u>	Sept. 10	-	Univ. of Texas
	17	-	Tennessee
	24	Army	-
	Oct. 1	Pittsburgh	-
	8	Tulane	-
	15	-	West Virginia
	22	Villanova	-
	29	-	Air Force
	Nov. 12	-	Syracuse
	19	Massachusetts	-
26	-	Holy Cross	
<hr/>			
<u>1978</u>	Sept. 16	Air Force	-
	23	Texas A&M	-
	30	Navy	-
	Oct. 7	Pittsburgh	-
	14	-	Tulane
	28	-	Temple
	Nov. 4	-	Villanova
	11	-	Army
	18	Syracuse	-
	25	-	Massachusetts
Dec. 2	Holy Cross	-	

Source: Director of Sports Information

BOSTON COLLEGE
1976-77 VARSITY HOCKEY SCHEDULE

	<u>HOME</u>	<u>AWAY</u>
Nov. 28	St. Louis	-
30	-	Brown
Dec. 3	Northeastern	-
5	St. Anselm's	-
8	-	Providence
11	-	Vermont
13	Providence	-
19	Notre Dame	-
28-29	-	Syracuse Invitational Tournament ^{a/} (Colgate, Cornell, Princeton, B.C.)
Jan. 6	Pennsylvania	-
8	-	New Hampshire
11	Harvard	-
15	Cornell	-
18	Dartmouth	-
22	Boston University	-
25	Yale	-
28	St. Lawrence	-
Feb. 1	New Hampshire	-
3	-	Dartmouth
7	-	Beanpot Tournament ^{b/} (Harvard vs. B.C., B.U. vs. N.U.)
11	Clarkson	-
14	Beanpot Tournament Finals	-
19	-	Army
22	Bowdoin	-
26	-	Boston University
Mar. 1	-	R.P.I.
5	-	Princeton

a/ At War Memorial Auditorium, Syracuse

b/ At Boston Garden

Source: Director of Sports Information

BOSTON COLLEGE
1976-77 VARSITY BASKETBALL SCHEDULE

	<u>HOME</u>	<u>AWAY</u>
Nov. 29	Maine-Orono	-
Dec. 1	New Hampshire	-
4	Harvard	-
7	Syracuse	-
10-11	-	Colonial Classic (Providence, <u>a/</u> B.C., Holy Cross, Mass.)
18	-	St. Joseph's
27-28	-	Milwaukee Classic (Wis. vs. B.C. Marquette vs. Clemson) <u>b/</u>
30-31	-	Pillsbury's Best Classic (B.C., <u>c/</u> Cornell, Montana, Minnesota)
Jan. 12	-	LeMoyne
15	-	Rutgers
19	Northeastern	-
22	Holy Cross	-
25	-	Yale
27	Connecticut	-
30	Villanova	-
Feb. 2	-	Massachusetts
5	Fordham	-
9	-	Rhode Island
12	-	Holy Cross
15	Dartmouth	-
19	-	Georgetown
23	-	St. John's
26	-	Fairfield

a/ At Boston Garden

b/ At Milwaukee Arena

c/ At Metropolitan Sports Center, Minneapolis

Source: Director of Sports Information

COMMUNITY USE OF BOSTON COLLEGE
RECREATIONAL FACILITIES

Roberts Center

CYO and Parochial League basketball tournaments
State high school cheerleading championships
Concerts and lectures sponsored by Boston College student groups
Locker room facilities for schoolboy football teams

Jack Ryder Track

"Home" facility for St. Sebastian track team
Practice track used almost daily by Boston State College
"Home" facility for the Greater Boston Track Club
Open for general public use at any time not conflicting with
Boston College team practices

Commander Shea Field

Eastern Massachusetts school boy baseball championships
Open for general public use at any time not conflicting with
Boston College team practices

McHugh Forum

CYO League hockey games
"Home" facility for all Newton and Brookline high and junior
high hockey teams
Greater Boston Bantam League games
Site of 1974 New England PeeWee championships
Chestnut Hill Figure Skating Club meets twice weekly
CYO Color Guard annual competition
Site of a weekend-long antique show and flea market run by local
group each fall
Open ice time daily from 12:00 to 6:00 a.m. Rented to area leagues.
General ice skating five nights per week. Open to students and
the public. Season memberships available at \$30 per person, \$75
per family, \$25 per family with a 50¢ fee for each use, or a
straight fee collected from those not holding a membership.

Alumni Stadium

Boston College High School Memorial Thanksgiving game
Eastern Massachusetts Schoolboy Superbowl
CYO Drum and Bugle Corps annual competition
Open for general public use at any time not conflicting with
Boston College team practices.

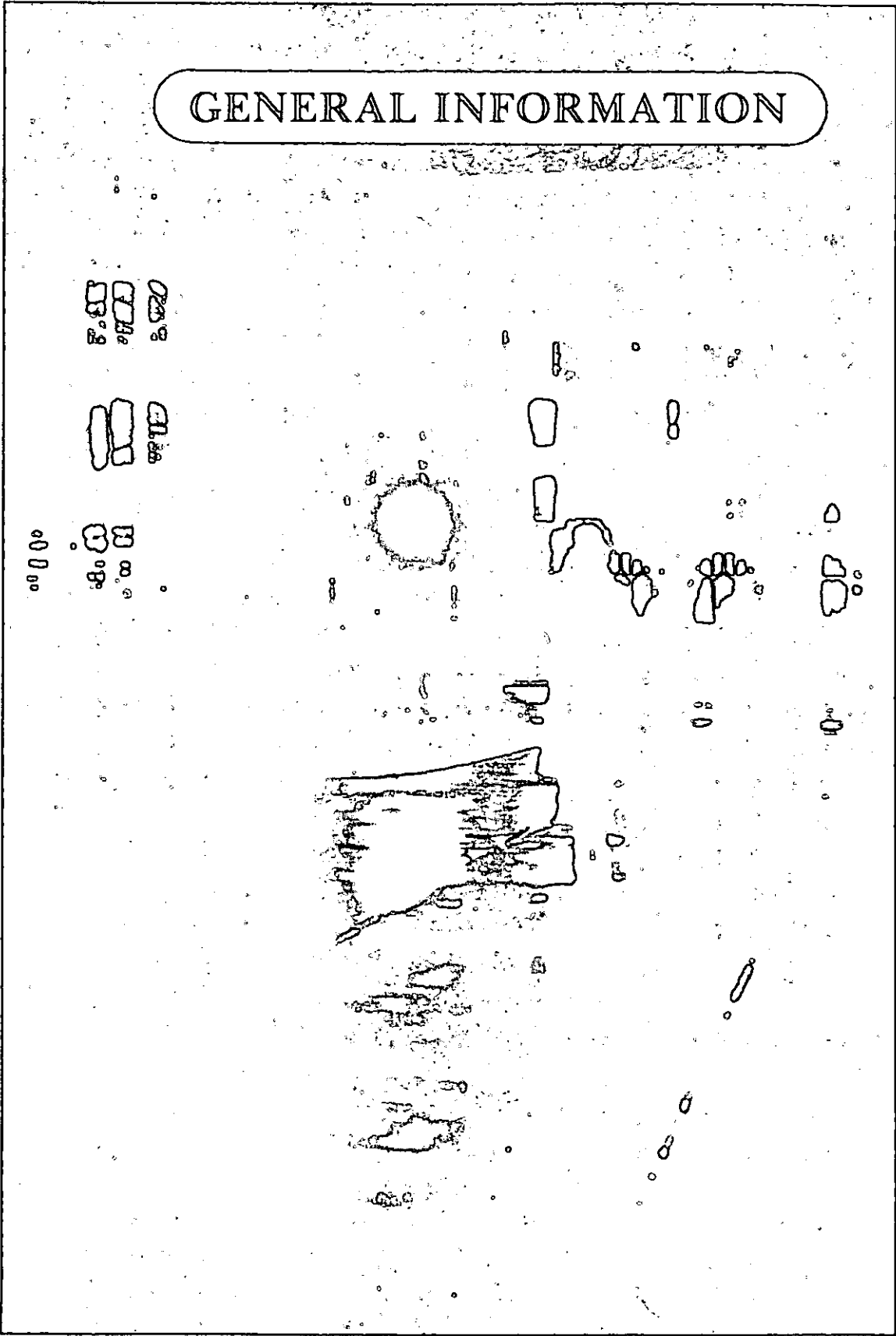
Source: Director of Sports Information

COMMUNITY USE OF BOSTON COLLEGE
RECREATION COMPLEX
1975-76

<u>Group</u>	<u>No. of People</u>	<u>No. of Times</u>	<u>No. of Uses</u>
Cerebral Palsy of Greater Boston	20	28	560
Community Swim Meets	50	5	250
Community Water Polo Games	12	4	48
NCAA Camp	200	24	6,000
Newton Country Day School	20	32	640
St. Sebastian's School	40	48	1,920
Scuba Course	120	6	720
Small Group Visits	144	-	-
Summer Memberships	<u>2,620</u>	-	-
TOTALS	<u>3,276</u>		<u>10,138</u>

Source: Recreation Complex Director

GENERAL INFORMATION



Types of Degrees Conferred
at Boston College

Bachelor of Arts (A.B.)
Bachelor of Sciences (B.S.)
Master of Arts (A.M.)
Master of Arts in Teaching (M.A.T.)
Master of Business Administration (M.B.A.)
Master of Education (M.Ed.)
Master of Science (M.S.)
Master of Science in Teaching (M.S.T.)
Master of Social Planning (M.S.P.)
Master of Social Work (M.S.W.)
Master of Theology (Th.M.)
Certificate of Advanced Educational
Specialization (C.A.E.S.)
Doctor of Philosophy, (Ph.D.)
Doctor of Law (J.D.)
Doctor of Education (D.Ed.)

Source: Boston College Bulletin

ACCREDITATION OF THE UNIVERSITY

The American Association of Colleges for Teacher Education
The American Assembly of Collegiate Schools of Business
The American Association of Theological Schools
The American Association of University Women
The American Bar Association
The American Chemical Society
The American Council on Education
The Association of American Colleges
The Association of American Law Schools
The Association of University Evening Colleges
The Association of Urban Universities
The Board of Regents of the University of New York
The College Entrance Examination Board
The Council of Graduate Schools
The Council on Social Work Education
The Jesuit Educational Association
The International Association of Universities
The International Association of Catholic Universities
The National Catholic Education Association
The National Commission on Accrediting
The National League for Nursing
The New England Association of Colleges and Secondary Schools

Source: Boston College Bulletin

FOUNDER OF BOSTON COLLEGE

Rev. John McElroy, S.J. Pastor, Immaculate Conception Parish,
Boston 1861-1863

PRESIDENTS OF BOSTON COLLEGE

1. Rev. John Bapst, S.J. 1863-1869

Incorporation of the Jesuit Scholasticate at
Boston as Boston College (1863). Admission
of lay students (September, 1864).
2. Rev. Robert W. Brady, S.J. 1869-1870
3. Rev. Robert Fulton, S.J. 1870-1880
4. Rev. Jeremiah O'Conner, S.J. 1880-1884

Establishment of Athletic Association (1883).
5. Rev. Edward V. Boursaud, S.J. 1884-1887

Alumni Association founded (1886).
6. Rev. Thomas H. Stack, S.J. 1887
7. Rev. Nicholas Russo, S.J. 1887-1888
8. Rev. Robert Fulton, S.J. 1888-1891
9. Rev. Edward I. Devitt, S.J. 1891-1894
10. Rev. Timothy Brosnahan, S.J. 1894-1898
11. Rev. W. G. Read Mullan, S.J. 1898-1903

Separation of preparatory courses leading to the establishment of Boston College High School (1902).

12. Rev. William F. Gannon, S.J. 1903-1907

13. Rev. Thomas I. Gasson, S.J. 1907-1914

Purchase of Chestnut Hill campus (1907).
First classes held in the Tower Building
(March, 1913).

14. Rev. Charles W. Lyons, S.J. 1914-1919

15. Rev. William Devlin, S.J. 1919-1925

Graduate program in education inaugurated
(1919). Summer School established, which
included the enrolling of women students
for the first time, under the direction
of Rev. James F. Mellyn, S.J. (1924).

16. Rev. James H. Dolan, S.J. 1925-1932

Expansion of the University to include the
Graduate School of Arts and Sciences with
Rev. John B. Creeden, S.J. as dean (1926);
the School of Philosophy with Rev. Arthur
J. Sheehan, S.J. as dean (1927); and the
Law School with Dennis A. Dooley as dean
(1929).

17. Rev. Louis J. Gallagher, S.J. 1932-1937

Establishment of the School of Social Work
under the deanship of Rev. Walter McGuinn, S.J.
(1936).

18. Rev. William J. McGarry, S.J. 1937-1939

Continued. . .

19. Rev. William J. Murphy, S.J. 1939-1945
20. Rev. William L. Keleher, S.J. 1945-1951
- Establishment of the School of Nursing with
Mary A. Maher as dean (1947).
21. Rev. Joseph R. N. Maxwell, S.J. 1951-1957
- Establishment of the School of Education
with Rev. Charles Donovan, S.J. as
dean(1952).
22. Rev. Michael P. Walsh, S.J. 1957-1968
23. Rev. W. Seavey Joyce, S.J. 1968-1972
24. Rev. J. Donald Monan, S.J. 1972-

HONORARY DEGREES AWARDED BY BOSTON COLLEGE

1952-1976

1952

Gregory Peter XV Cardinal Agagianian, LL.D. (January 14, 1952)
James B. Connolly, Litt.D.
James M. O'Neill, LL.D.
Most Rev. Thomas F. Markham, LL.D., Commencement Speaker
Rt. Rev. Thomas J. Riley, LL.D.
James J. Ronan, LL.D.

1953

Dorothy L. Book, LL.D.
Most Rev. James L. Connolly, LL.D.
Clifford J. Laube, Litt.D.
Francis J. O'Halloran, A.M.
Most Rev. Leonard J. Raymond, LL.D., Commencement Speaker
Alex Ross, A.M.
John C. H. Wu, LL.D.

1954

Edward H. Chamberlin, LL.D.
John J. Hearne, LL.D., Commencement Speaker
James W. Manary, Sc.D.
Thomas A. Printon, LL.D.
Ven. Bro. William Sheehan, C.F.X., LL.D.
Most Rev. Christopher J. Weldon, LL.D.
Louis de Wohl, Litt.D.
William J. O'Keefe, LL.D. (November 21, 1954)

1955

Fred J. Driscoll, LL.D.
Christian A. Herter, LL.D.
Edward A. Hogan, Jr., LL.D., Commencement Speaker
Rear Adm. Bartholomew W. Hagan, Sc.D.
John B. Hynes, LL.D.
His Beatitude Maximos IV, LL.D. (August 23, 1955)
Valerian Cardinal Gracias, LL.D.
Russel Kirk, Litt.D.
Edward A. Sullivan, LL.D.

HONORARY DEGREES AWARDED BY BOSTON COLLEGE

1956

Bartholomew A. Brickley, LL.D.
Peter J. W. Debye, Sc.D.
Most Rev. Frederick A. Donaghy, LL.D.
The Hon. John F. Kennedy, LL.D., Commencement Speaker
John W. King, LL.D.
Charles Munch, D.Mus.
Edward F. Williams, LL.D.

1957

Wallace E. Carroll, LL.D.
Arthur J. Kelly, LL.D.
Augustus C. Long, LL.D., Commencement Speaker
Adrian O'Keefe, LL.D.
Very Rev. Msgr. Patrick W. Skehan, LL.D.
Nils Y. Wessell, LL.D.

1958

Most Rev. Amleto G. Cicognani, D.D., LL.D. (April 21, 1958)
Carl J. Gilbert, LL.D.
Paul Horgan, Litt.D.
Barnaby C. Keeney, LL.D., Commencement Speaker
Henry M. Leen, LL.D.
Jacques Maritain, LL.D.
Raissa Maritain, LL.D.
Harold Marston Morse, D.Sc.
Rev. John B. Sheerin, C.S.P., LL.D.
His Eminence Francis Cardinal Spellman, LL.D. (December 8, 1958)

1959

His Excellency Sean T. O'Kelly, LL.D. (March 22, 1959)
Ernest Henderson, LL.D.
Rev. John LaFarge, S.J., LL.D.
Henry Cabot Lodge, LL.D.
George Meany, LL.D.
Carlos P. Romulo, LL.D., Commencement Speaker
Helen C. White, Litt.D.

HONORARY DEGREES AWARDED BY BOSTON COLLEGE

1960

Marian Anderson, S.Mus.
J. Peter Grace, LL.D.
Caryl P. Haskins, LL.D.
Robert F. Kennedy, LL.D.
Charles Malik, LL.D., Commencement Speaker
Most. Rev. Russell J. McVinney, D.D., LL.D.
Samuel Eliot Morison, LL.D.
Rt. Rev. Matthew P. Stapleton, LL.D.
Rev. Henry M. Brock, S.J., D.Sc. (October 12, 1960)

1961

Allen W. Dulles, LL.D.
Anthony Julian, LL.D.
Robert D. Murphy, LL.D., Commencement Speaker
Louis R. Perini, LL.D.
Abraham Ribicoff, LL.D.
Rt. Rev. Robert J. Sennott, LL.D.
Edward Teller, LL.D.

1962

Detlev W. Bronk, D.Sc., Commencement Speaker
Ralph J. Bunche, LL.D.
Christopher J. Duncan, M.D., LL.D.
Sir Alec Guinness, D.F.A.
Rt. Rev. Francis J. Lally, Litt.D.
Ralph Lowell, LL.D.
Phyllis McGinley, Litt.D.
Perry G. Miller, Litt.D.

1963

Augustin Cardinal Bea, S.J., J.U.D. (March 26, 1963)
Very Rev. Edward B. Bunn, S.J., LL.D.
Lady Barbara Ward Jackson, Litt.D.
Nathan Marsh Pusey, L.H.D.
Bruce Catton, Litt.D.
Anthony Joseph Celebrezze, LL.D., Commencement Speaker
Arthur Joseph Goldberg, LL.D.
John Jay McCloy, LL.D.

Continued. . .

HONORARY DEGREES AWARDED BY BOSTON COLLEGE

1963
(cont.)

James Barrett Reston, LL.D.
Rt. Rev. John Joseph Ryan, L.H.D.
Jose Luis Sert, Litt.D.
Joseph Leo Sweeney, LL.D.
Robert Clifton Weaver, LL.D.
James Edwin Webb, D.Sc.

1964

John Coleman Bennett, LL.D.
Henri Maurice Peyre, LL.D.
Most Rev. Ernest John Primeau, LL.D.
Sidney R. Rabb, L.H.D.
Paul Anthony Samuelson, LL.D.
Very Rev. Joseph L. Shea, S.J., LL.D.
Robert Sargent Shriver, Jr., LL.D., Commencement Speaker
Mrs. Mary Sullivan Stanton, LL.D.

1965

John P. Birmingham, LL.D.
Robert McAfee Brown, LL.D.
J. N. Douglas Bush, Litt.D.
Victor L. Butterfield, L.H.D.
John T. Connor, LL.D.
Edith Green, LL.D.
Rev. John Courtney Murray, S.J., L.H.D., Commencement Speaker
Rt. Rev. Lawrence J. Riley, LL.D.
Alan T. Waterman, D.Sc.

1966

Most Rev. John W. Comber, MM, D.D., L.H.D.
Edward F. Gilday, L.H.D.
Edward M. Kennedy, LL.D.
Francis Keppel, LL.D., Commencement Speaker
Mother Eleanor M. O'Byrne, R.S.C.J., LL.D.
Stephen P. Mugar, LL.D.
Abram L. Sachar, L.H.D.
Rene Wellek, Litt.D.
George Wells Beadle, D.Sc.

HONORARY DEGREES AWARDED BY BOSTON COLLEGE

1966
(cont.)

William Bosworth Castle, M.D., L.H.D.
Donald Frederick Hornig, LL.D.
James Alfred Van Allen, D.Sc.

1967

Sarah Caldwell, Litt.D.
Richard Palmer Chapman, LL.D.
Very Rev. John Francis Fitzgerald, C.S.P., L.H.D.
John Kenneth Galbraith, LL.D.
John William Gardner, LL.D., Commencement Speaker
Everett Cherrington Hughes, LL.D.
John Anthony Volpe, LL.D.

1968

Kingman Brewster, LL.D., Commencement Speaker
Rev. Henri de Lubac, S.J., L.H.D.
Erwin N. Griswold, LL.D.
Rita P. Kelleher, D.Sc.
Most Rev. John J. McEleney, S.J., LL.D.
Cornelius W. Owens, LL.D.
James J. Shea, LL.D.
Roger J. Traynor, LL.D.

1969

R. Buckminster Fuller, D.F.A., Commencement Speaker
Katharine Graham, D.Journ.
Philip J. McNiff, L.H.D.
Talcott Parsons, D.S.S.
A. Philip Randolph, J.D.
Henry Lee Shattuck, D.C.S.
Terence Cardinal Cooke, J.D.

1970

James Edward Allen, Jr., D.Sc.Ed.
Rt. Rev. John Melville Burgess, LL.D.
Joan Ganz Cooney, D.Sc.Ed.

Continued. . .

HONORARY DEGREES AWARDED BY BOSTON COLLEGE

1970
(cont.)

Sterling Dow, L.H.D.
Hartford Nelson Gunn, Jr., L.H.D.
Rev. Bernard Joseph Francis Lonergan, S.J., Hist.Phil.D.
Elliot Norton, L.H.D.
Perry Townsend Rathbone, D.F.A.
The Hon. Earl Warren, D.Sc.L., Commencement Speaker

1971

Walter Jackson Bate, H.D.
Andrew Felton Brimmer, S.S.D.
Rev. Msgr. George William Casey, Litt.D.
Mircea Eliade, R.D.
Eli Goldston, L.L.D.
Elma Lewis, D.F.A.
The Hon. Michael Joseph Mansfield, LL.D., Commencement Speaker
William James McGill, S.S.D.
Most Rev. Humberto Sousa Medeiros, S.T.D.
Walter George Muelder, D.Sc.T.
The Hon. Leverett Saltonstall, LL.D.

1972

Mary Ingraham Bunting, D.Sc.
Arthur Fiedler, D.Mus.
Northrop Frye, L.H.D.
John James Griffin, D.C.S.
Sir William Arthur Lewis, L.H.D.
Louis Martin Lyons, D.Journ.
Rev. John Anthony McCarthy, S.J., Litt.D.
Hildegarde Elizabeth Peplau, D.N.S.
The Hon. Adlai Ewing Stevenson, III, LL.D., Commencement Speaker
The Hon. Walter Edward Washington, LL.D.

1973

A. J. Antoon, L.H.D.
Harold Bloom, L.H.D.
Fred J. Borch, S.B.A.
Vernon E. Jordan, Jr., LL.D.
John George Kemeny, D.Sc., Commencement Speaker
Daniel Linehan, S.J., D.Sc.
Thomas Philip O'Neill, Jr., LL.D.

1974

Soia Mentschikoff, LL.D., Commencement Speaker
Thomas L. Phillips, D.B.A.
The Honorable Carl Thomas Rowan, A.H.D.

HONORARY DEGREES AWARDED BY BOSTON COLLEGE

1974
(cont.)

The Honorable Thomas Paul Salmon, LL.D.
Sir Ronald Syme, L.H.D.
Henry Bradford Washburn, Jr., L.H.D.

1975

Malnea A. Cass, L.H.D.
The Honorable Silvio O. Conte, LL.D.
Rev. Francis J. Gilday, S.J., L.H.D.
Edward Lewis Hirsh, L.H.D.
Paul Ricoeur, L.H.D., Commencement Speaker
Vincent Charles Ziegler, D.B.A.

1976

Abram Thurlow Collier, D.B.A.
John Hope Franklin, L.H.D.
Rev. Martin Patrick Harney, S.J., H.D.
Mildred Fay Jefferson, D.Sc.
Asa Smallidge Knowles, D.Sc.Ed.
Joseph Francis Maguire, LL.D.
Daniel Patrick Moynihan, LL.D., Commencement Speaker

ACADEMIC DEPARTMENT LOCATIONS

Accounting Department	Fulton 100
Administrative Sciences Department	Fulton 213
Arts and Sciences	Gasson 103-105
Biology Department	Higgins 321
Center for East Europe, Russia & Asia	Carney 201
Chemistry Department	Devlin 223B
Classical Studies Department	Carney 155
Computer Sciences Department	Fulton 406
Counselor Education and Counseling Psychology Program	McGuinn 314
Counselors:	
Arts and Sciences	Gasson 117
Education	Campion 301
Management	Fulton 215
Nursing	Cushing 103
Curriculum and Instruction Program:	
Director	Campion 219
Early Childhood	Campion 200A
Elementary	Campion 307
Media Specialist	Campion 10
Reading Specialist	Campion 312
Science Education	Campion 219
Secondary Education	Campion 115
Economics Department	Carney 132
Education	Campion 100-104B
Educational Administration and Supervision Program	McGuinn 604
Educational Research, Measurement and Evaluation Program	Campion 319
English Department	Carney 442
Evening College	Fulton 317
Film Study Program	Lyons 407
Finance Department	Fulton 310
Fine Arts Department	Barry Wing, Newton Campus

Continued. . .

General Business Program	Fulton 215
Geology and Geophysics Department	Devlin 209
Germanic Studies Department	Carney 325
Graduate Arts and Sciences	McGuinn 221
Higher Education Program	Campion 214
History Department	Carney 115
History and Philosophy of Education Program	Campion 313
Honors Programs:	
Arts and Sciences	Gasson 7
Education	Campion 104B
Management	Fulton 215
Law School	Stuart, Newton Campus
Law Department	Fulton 403
Management	Fulton 405
Marketing Department	Fulton 303
Mathematics Department	Carney 317
Music Program	St. Mary's Hall, Newton Campus
Nursing	Cushing 203
Organizational Studies Program	Fulton 217
Philosophy Department	Carney 272
Physics Department	Higgins 355
Political Science Department	McGuinn 200
Psychology Department	McGuinn 349
Religious Education Program	90 College Rd.
Romance Languages and Literatures Department	Carney 334
Slavic and Eastern Languages Department	Carney 235
Social Work Graduate School	McGuinn 132
Sociology Department	McGuinn 416
Special Education and Rehabilitation Program	McGuinn B15
Speech Communication and Theatre	McGuinn 500
Summer Session	McGuinn 401
Theology Department	Carney 404

Source: Boston College Bulletin

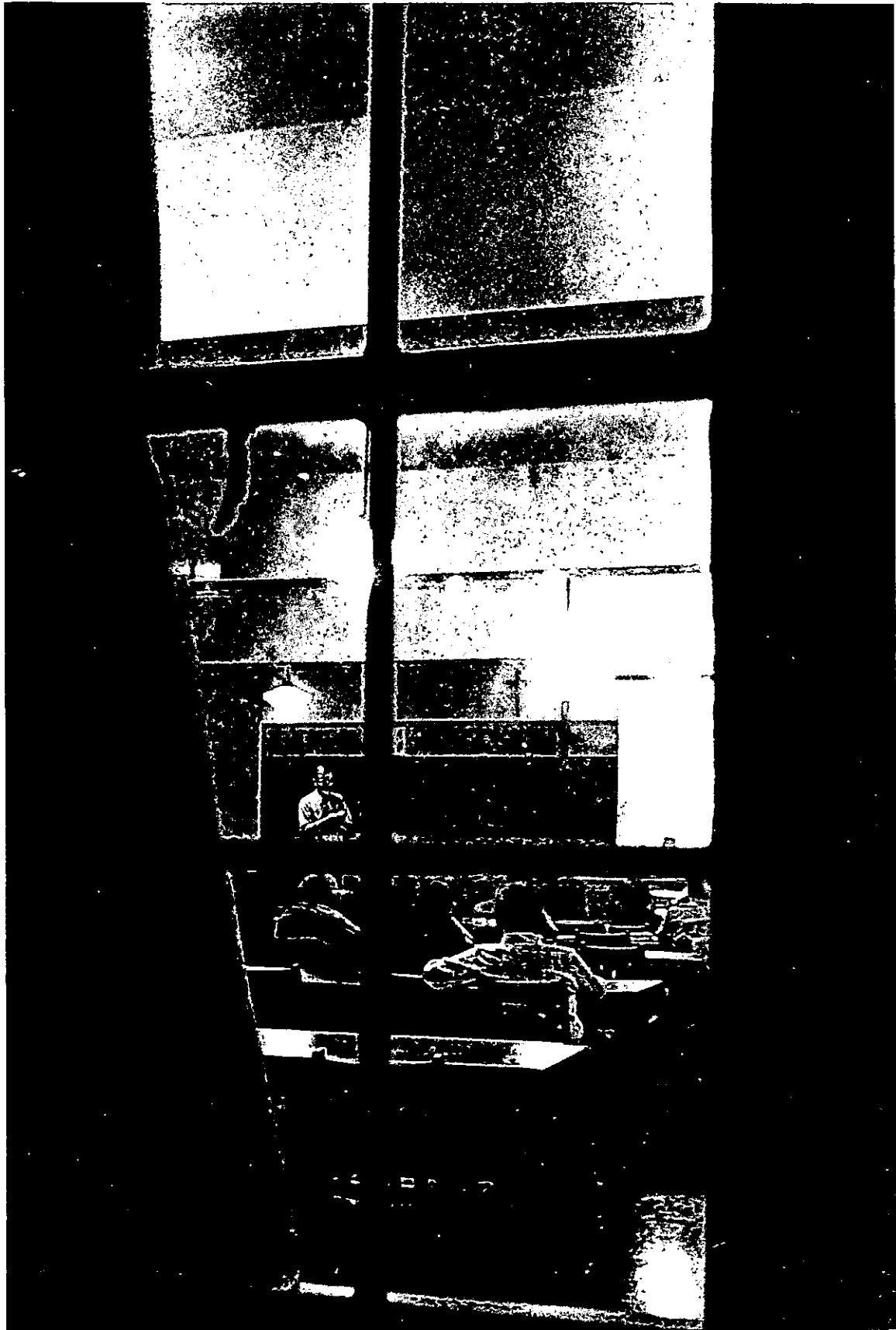
CONTRIBUTORS

Admissions Office
Alumni Association
Assessing Engineering Department, City of Boston
Buildings and Grounds Department
Computer Center
Controller's Office
Dean of Faculties
Dining Department
Director of Space Management
Director of Sports Information
Engineering Department, City of Newton
Financial Aid Office
Health Services Office
Office of Research Administration
Office of Student Activities
Payroll Office
Personnel Office
Purchasing Department
Recreation Complex Director
Registrar's Office
Secretary of the University
Summer Session Office
University Academic Senate
University Librarian
Vice President, Financial and Business Affairs

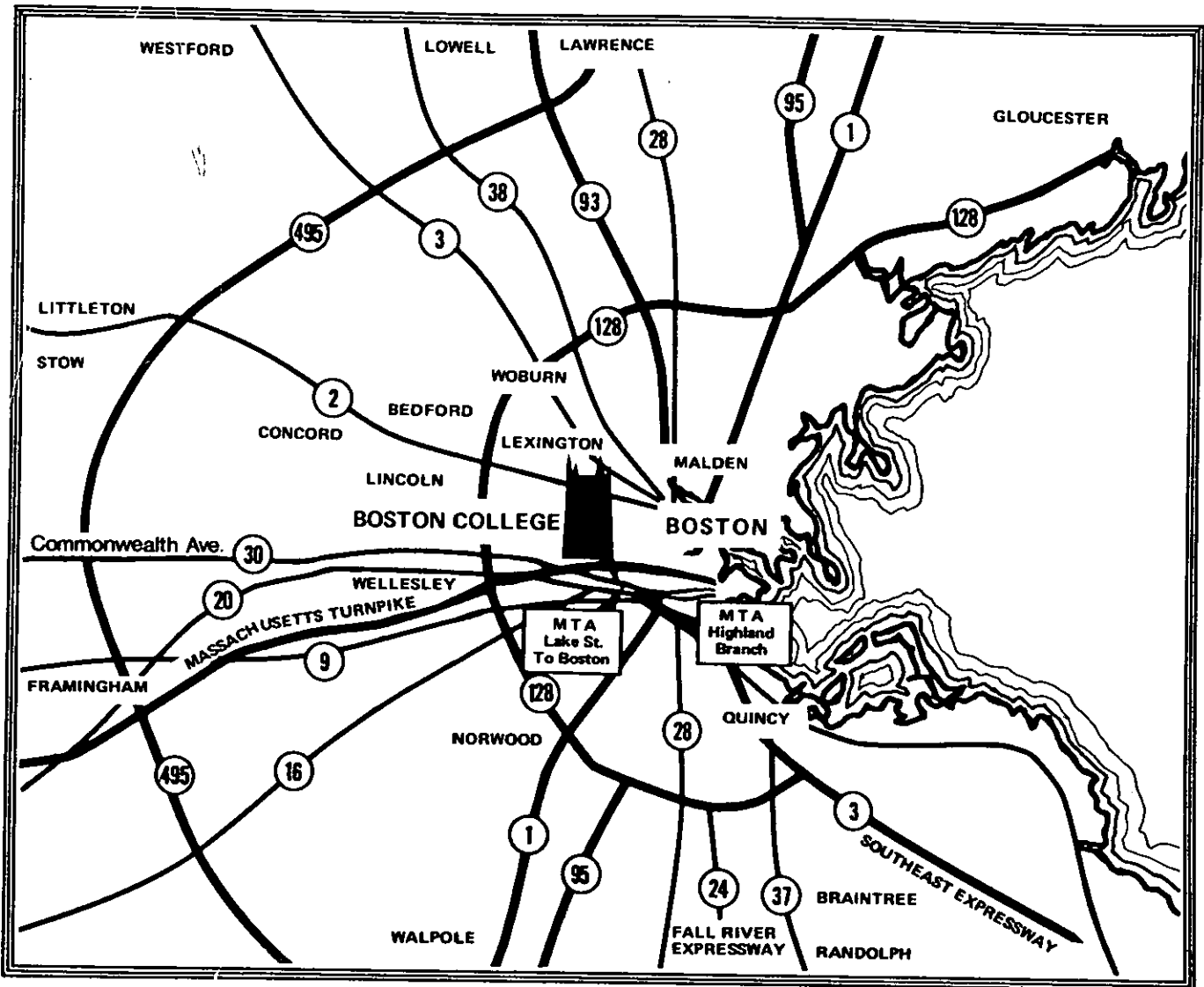
BIBLIOGRAPHY

AAUP Bulletin
"A Guide to the Campus"
Boston College Alumni Directory-1974
Boston College Bulletin-Undergraduate Admissions Information, 1976-77
Boston College Bulletin-University General Catalog, 1976-77
Boston College Information for New Students, 1976-77
Boston College Libraries Handbook
"New Heights Advancement Campaign"
Boston College Physical Facilities
Economic Impact of Colleges & Universities in the Boston Area
Facts about New England Colleges, Universities, and Institutes,
14th ed., 1975-76

*N.B. Sources are responsible for the accuracy and completeness
of data submitted for publication*



Directions to Boston College



Located between Commonwealth Avenue (Route 30) and Beacon Street in Chestnut Hill, Massachusetts, the campus of Boston College is easily accessible from all approaches. The main entrance is on Commonwealth Avenue.

Visitors arriving at Logan International Airport will find ample means of transportation into downtown Boston. Interstate bus lines all have terminals in the heart of the city.

From downtown Boston, visitors may travel directly to the University by taxi or may take the Boston College - Commonwealth Avenue trolley car out of Park Station and to the end of the line, where the campus is only a short walk up the hill.

For those driving to Boston College, the auto routes are easily traveled and plainly marked.

From the south and southeast - Routes 95 and 24 north, to Route 128 north, to Route 30 (Commonwealth Avenue) east, directly to Boston College.

From the west and southwest (e.g. New York City, New Jersey, etc.) - Routes 15 or 91 north, to the Massachusetts Turnpike (Route 90) east, to Route 128 north, to Route 30 (Commonwealth Avenue) east, directly to Boston College.

From the north and northeast - Routes 3, 93, and 95 (U.S. 1) south, to Route 128 south, to Route 30 (Commonwealth Avenue) east, directly to Boston College.

The Newton Campus is off Commonwealth Avenue, north on Centre Street. It is approximately one mile from the Chestnut Hill Campus.