

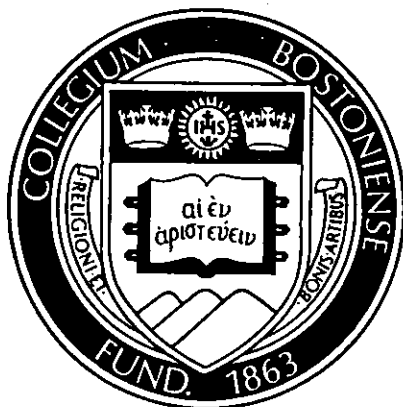
BOSTON COLLEGE

fact book
1983-84



BOSTON COLLEGE

fact book
1983-84



**BOSTON COLLEGE FACT BOOK
TABLE OF CONTENTS**

	Page
Foreword	v
Boston College — A Brief History	vii
Boston College Profile	viii
I. ADMINISTRATION AND FACULTY	
Trustees of Boston College, December, 1972 — September, 1985	2
Chart of Administration	3
Board of Trustees	4
Trustee Associate Membership	5
Officers of the University	6
Academic Deans	6
University Administrators	7
Department Chairmen and Chairwomen	8
Professional, Administrative and Support Staff Personnel	9
Faculty:	
— by School and Rank	10
— Full-Time Equivalent by School	10
— by School and Tenure Status	11
— by School and Sex	11
— by Highest Earned Degree and Rank	12
— by Highest Earned Degree and Sex	12
— by Rank and Sex	12
Full-Time Faculty, Graduate Assistants, Teaching Fellows:	
— by School and Department	13
Average Faculty Compensation:	
— by Rank, AAUP Category I, 1983-84	14
— Boston College Faculty — For the Seven Years Ended May 31, 1984	14
II. STUDENTS	
Freshman Enrollment by Year and Sex (Full-Time)	16
Freshman Enrollees — SAT Average by Class	16
Freshman Applications, Acceptances and Enrollment (Full-Time)	16
Class of 1988 Applications and Enrollees — Geographic Distribution	17
Undergraduate Transfer Students:	
— Applications, Acceptances and Enrollment (Full-Time)	17
— by Type of Previous Institution and Sex	17
Enrollment:	
— Graduate and Undergraduate, Full- and Part-Time	18
— Undergraduate, Day and Evening, and Graduate	18
— Undergraduate, by School	19
— Graduate, by School	19
— Graduate, by Degree Program and Discipline	20
— Undergraduate and Graduate, by Sex	21
— Full-Time Equivalent	21
— Evening College	22
— Summer Session	22

— Geographic Distribution of Students	23
— International Students and Scholars, Fall, 1983:	
— by School	24
— by Class or Program	24
— by Sex and Program	24
— by Country	25
— Minority Enrollment	26
— Veteran Enrollment	26
Undergraduate Degrees Conferred:	
— by Degree and Number of Majors	27
— by Major	28
— by School and by Major	29
Undergraduate and Graduate Degrees Conferred by Degree and Sex	30
Undergraduate and Graduate Financial Aid:	
— Dollars	31
— Number of Awards	31
Health Services	32
University Counseling Services:	
— Number of Students, Faculty-Staff Served	32
— Services Provided to Undergraduate and Graduate Students	32
III. ALUMNI	
Boston College Alumni Clubs	34
Alumni Association Board of Directors, 1984-85	34
Alumni Awards	34
Comparative Regional Analysis	35
Geographic Analysis by State	35
Living Alumni by Primary School, Sex and Class	36
Alumni Donors by Primary School and Class	38
Boston College Fund, 1983-84	40
Individual Donors by Giving Club	40
IV. PHYSICAL PLANT	
Map — Chestnut Hill Campus	42
Map — Newton Campus	43
Map — Weston Observatory	44
Boston College Properties	45
Buildings Related to Boston College Operation	46
Summary of Building Use	47
Classrooms	48
Dining Facilities	48
Offices	48
Facility Capacities	49
Residence Hall Capacities	50

V. FINANCE

Highlights of Financial Operations	52
Tuition Restated in 1967 Dollars	52
Tuition and Fees — For the Ten Years Ending May 31, 1984	53
Selected Contract and Grant Awards	54
Summary, Contract and Grant Awards	55
Contracts and Grants, Source and Application	55

VI. LIBRARIES

Boston College Libraries	58
Expenditures for Library Materials	58
Holdings by Individual Libraries	58
Circulation Statistics	58
Special Library Services	59
Special Collections	60
Boston College Archives	61

VII. ATHLETICS

Varsity Sports	64
Club Sports	64
Varsity Sports Records	65
Varsity Football Schedules, 1984-87	65
Varsity Hockey Schedule, 1984-85	66
Varsity Basketball Schedule, 1984-85	66

VIII. GENERAL INFORMATION

Founder and Presidents	68
Honorary Degrees	68
Honorary Degrees Awarded, 1952-84	69
Types of Degrees Conferred	70
Accreditation and Memberships of the University	71
Academic Department Locations	72
Sources	73
Academic Calendar	74

FOREWORD

The *Boston College Fact Book* is a summary of significant statistics gathered from various sources throughout the University. Once again, we wish to extend sincere thanks and appreciation for the excellent cooperation and assistance received from these many sources.

The purpose of the *Fact Book* is to produce a single-source publication and reference document touching upon and integrating all aspects of the institution's people and its operations. We do wish to point out to all users that the information presented herein was compiled at a specific time — September-October, 1984 — to reflect the Academic Year 1983-1984, as well as the most current enrollment statistics for 1984-85.

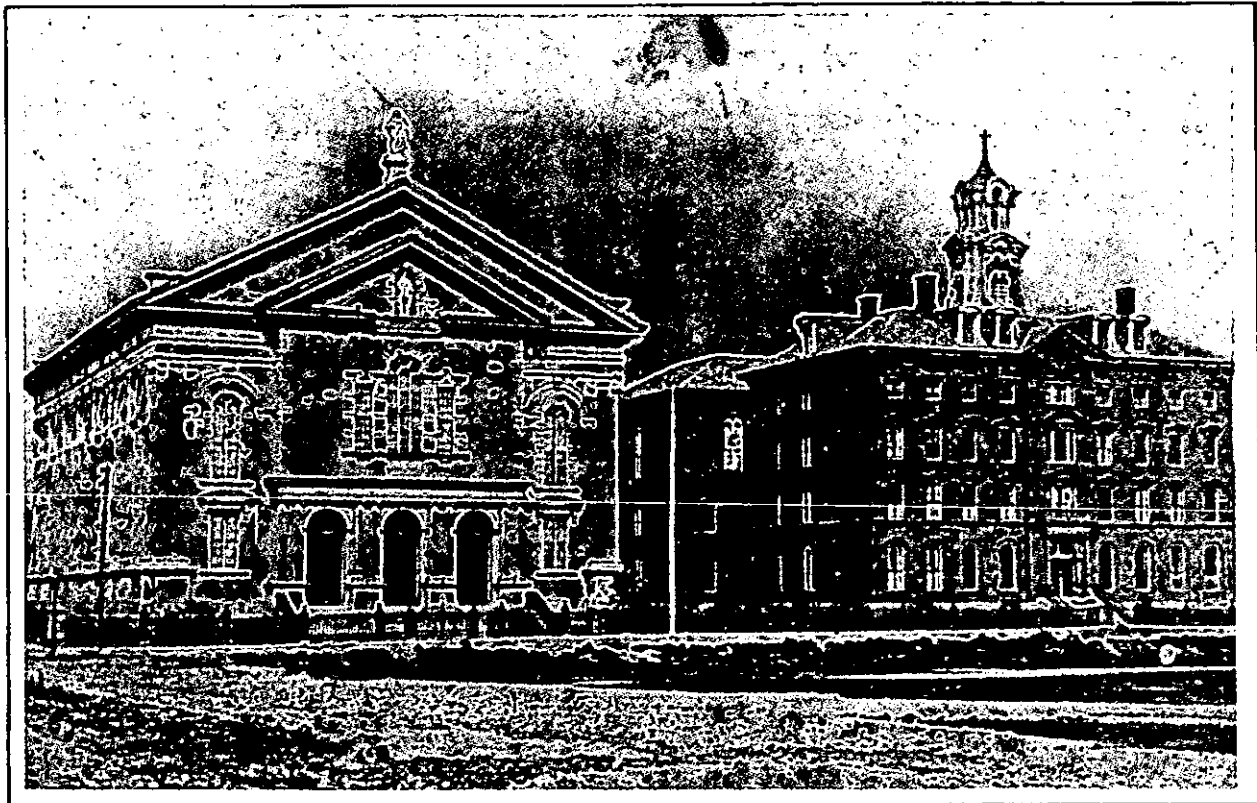
The majority of the information is extracted from management reports produced on a regular basis by the various source offices. When reviewing the figures presented we advise you to always note the time frame referenced in the individual tables, and to contact responsible offices should you have further questions.

In the *Year of the Library*, it was difficult not to focus our attention on the completion and dedication of the new O'Neill Library, but during the academic year for which we are reporting data, the new library had not been officially completed. We did feel, however, that the photograph introducing the Library Section was in order.

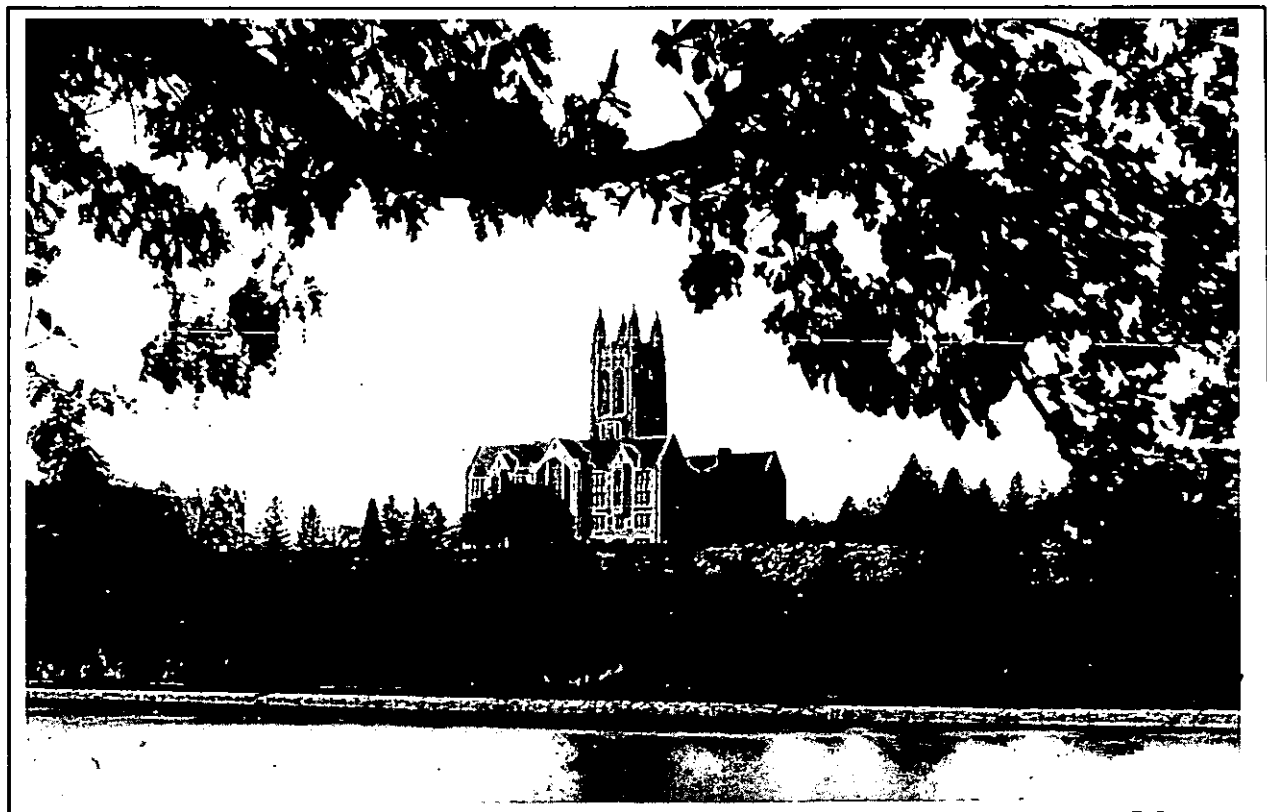
With this 13th edition, we continue our efforts to make the *Fact Book* as current as possible, as well as an historical overview and welcome suggestions for additional data and improvements.

Office of the
Financial Vice President and Treasurer

November, 1984



*The original arrangement of the buildings at the old Boston College.
Photographed sometime before 1875 by Oliver Wendell Holmes.*



The Recitation Building (Gasson Hall) on the Lawrence reservoir, circa 1914.

BOSTON COLLEGE
A Brief History

Boston College was founded by the Society of Jesus in 1863, and is one of twenty-eight Jesuit colleges and universities in the United States. With three teachers and twenty-two students, the school opened its doors on September 5, 1864. While it remained a small liberal arts college, the faculty was predominantly Jesuit, but today's full-time faculty is comprised of 40 Jesuits and 523 lay men and women. Part-time faculty positions are held by 18 Jesuits, in addition to 22 Jesuit members of the university administration.

Originally located on Harrison Avenue in the South End of Boston, where it shared quarters with the Boston College High School, the College outgrew its urban setting toward the end of its first fifty years. A new location was selected in Chestnut Hill, then almost rural, and four parcels of land were acquired in 1907. A design competition for the development of the campus was won by the firm of Maginnis and Walsh, and ground was broken on June 19, 1909, for the construction of Gasson Hall. It is located on the site of the Lawrence farmhouse, in the center of the original tract of land purchased by Father Gasson, and is built largely of stone taken from a quarry which occupied part of the sites of Devlin, Higgins, and Cushing Halls. The foundations were blasted out of solid ledge. Because of its historic value, Gasson was completely restored in 1976 in order to preserve its familiar Gothic spires for future generations of students and alumni.

Later purchases doubled the size of the property, with the addition of the upper campus in 1941, and the lower campus with the purchase of the Lawrence Basin and adjoining land in 1949. In 1974 Boston College acquired Newton College of the Sacred Heart, a mile-and-a-half from the main campus. With fifteen handsome Georgian buildings standing in a park-like estate of forty acres, it is now the site of the Boston College Law School, as well as several academic departments, and dormitories housing over 800 freshmen and sophomores.

Though incorporated as a University since its beginning, it was not until its second half-century that Boston College began to fill out the dimensions of its University charter. The Summer Session was inaugurated in 1924; the Graduate School of Arts and Sciences in 1925; the Law School, 1929; the Evening College, 1929; the Graduate School of Social Work, 1936; the College of Business Administration, 1938. The latter, along with its Graduate School established in 1957, is now known as the School of Management. The Schools of Nursing and Education were founded in 1947 and 1952, respectively. Weston Observatory, founded in 1928, was accepted as a Department of Boston College in 1947, offering courses in geophysics and geology to graduate students.

In 1927 Boston College conferred one earned bachelor's degree and fifteen master's degrees on women through the Extension Division, the precursor of the Graduate School of Arts and Sciences, the Evening College, and the Summer Session. Today's women students comprise 57 percent of the University's enrollment, and 40 percent of a total alumni body of over 82,000.

Now the fourth largest private university in New England, with full- and part-time enrollment of over 14,000, Boston College consists of eleven schools, colleges, and institutes offering thirteen degree programs and one certification program.

BOSTON COLLEGE PROFILE

ADMISSIONS (Class of 1988)

Applicants	14,398
Enrollees	
Men	1,030
Women	<u>1,276</u>
Total Freshman Class	2,306

ENROLLMENT — (Full- and Part-Time 1984-85)

Undergraduate	10,583
Graduate	<u>3,627</u>
Total Enrollment	14,210

FACULTY (1983-84)

Full-Time Faculty	563
Part-Time Faculty (FTE)	142
Teaching Fellows	108
Graduate Assistants	293

PROFESSIONAL, ADMINISTRATIVE AND SUPPORT STAFF (Fall, 1984)

Total Administrative/Professional Staff	512
Total Secretarial, Clerical & Technical	516
Total Buildings & Grounds, Plant Services	397

DEGREES CONFERRED (1984)

Undergraduate	2,273
Graduate & Professional	<u>1,004</u>
Total Degrees Conferred	3,277

ALUMNI (Fall, 1984)

82,681

LIBRARIES — (Total Holdings) — Volumes (1984)

943,639

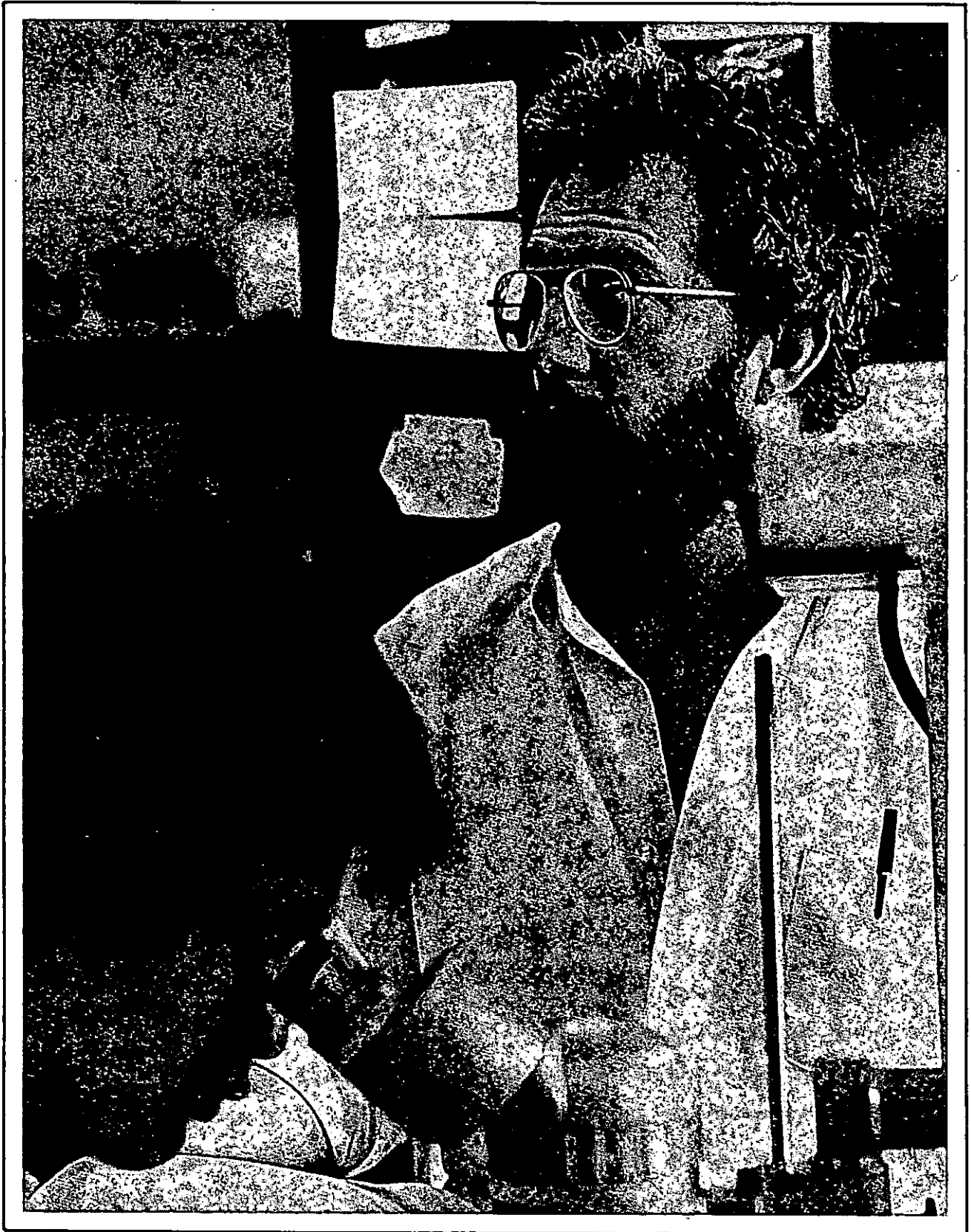
PHYSICAL PLANT (Fall, 1984)

Acres (owned properties)	
Chestnut Hill Campus	110.60
Newton Campus	40.20
Other	<u>9.62</u>
Total Acres	160.42
Buildings (utilized properties)	
Administrative/Academic	33
Student Housing	23
Other	<u>24</u>
Total Buildings	80

FINANCE (1983-84)

Revenues	\$133,200,000
Expenditures and Transfers	\$133,000,000

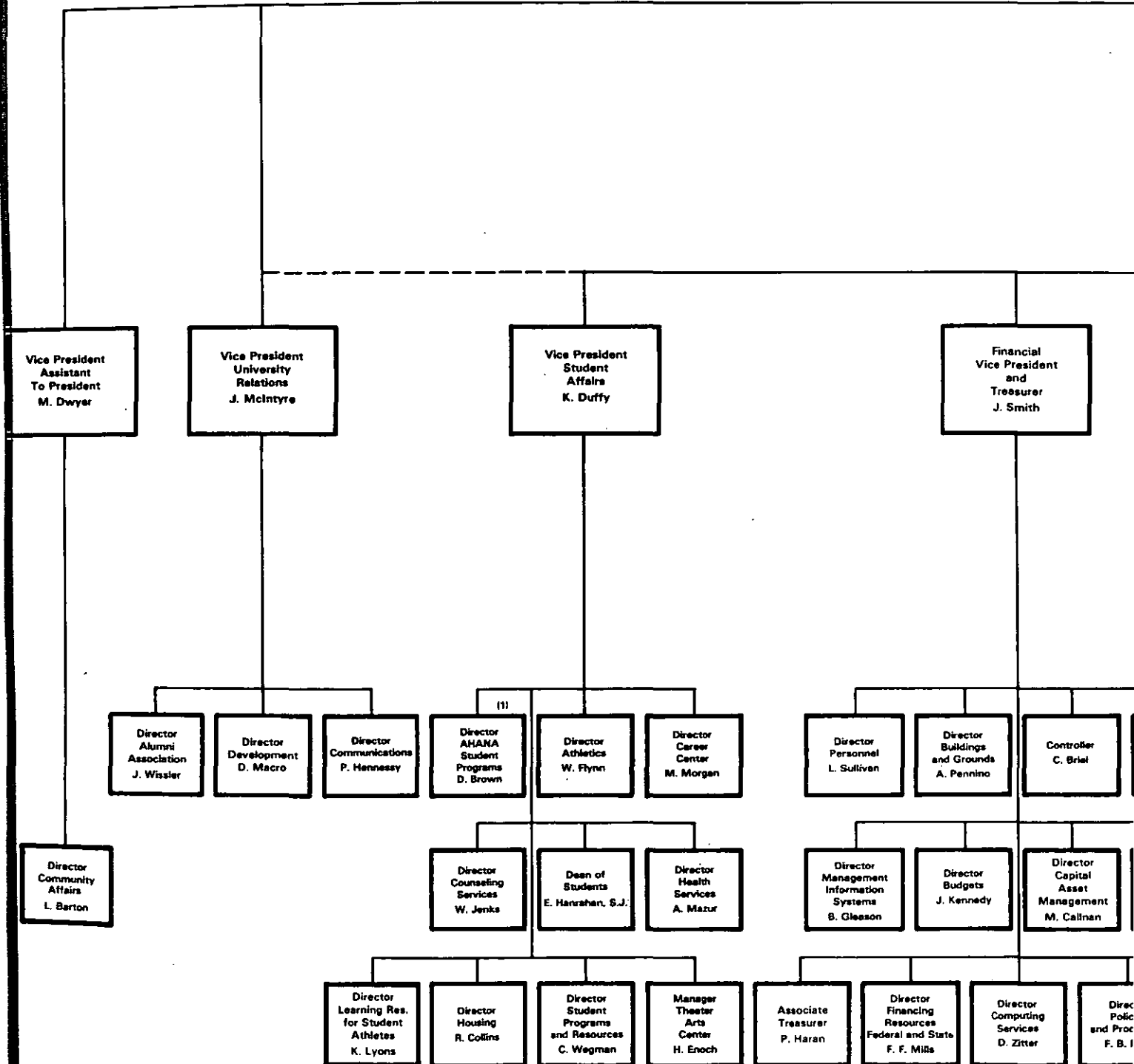
ADMINISTRATION & FACULTY



**TRUSTEES OF BOSTON COLLEGE
DECEMBER, 1972 THROUGH SEPTEMBER, 1985**

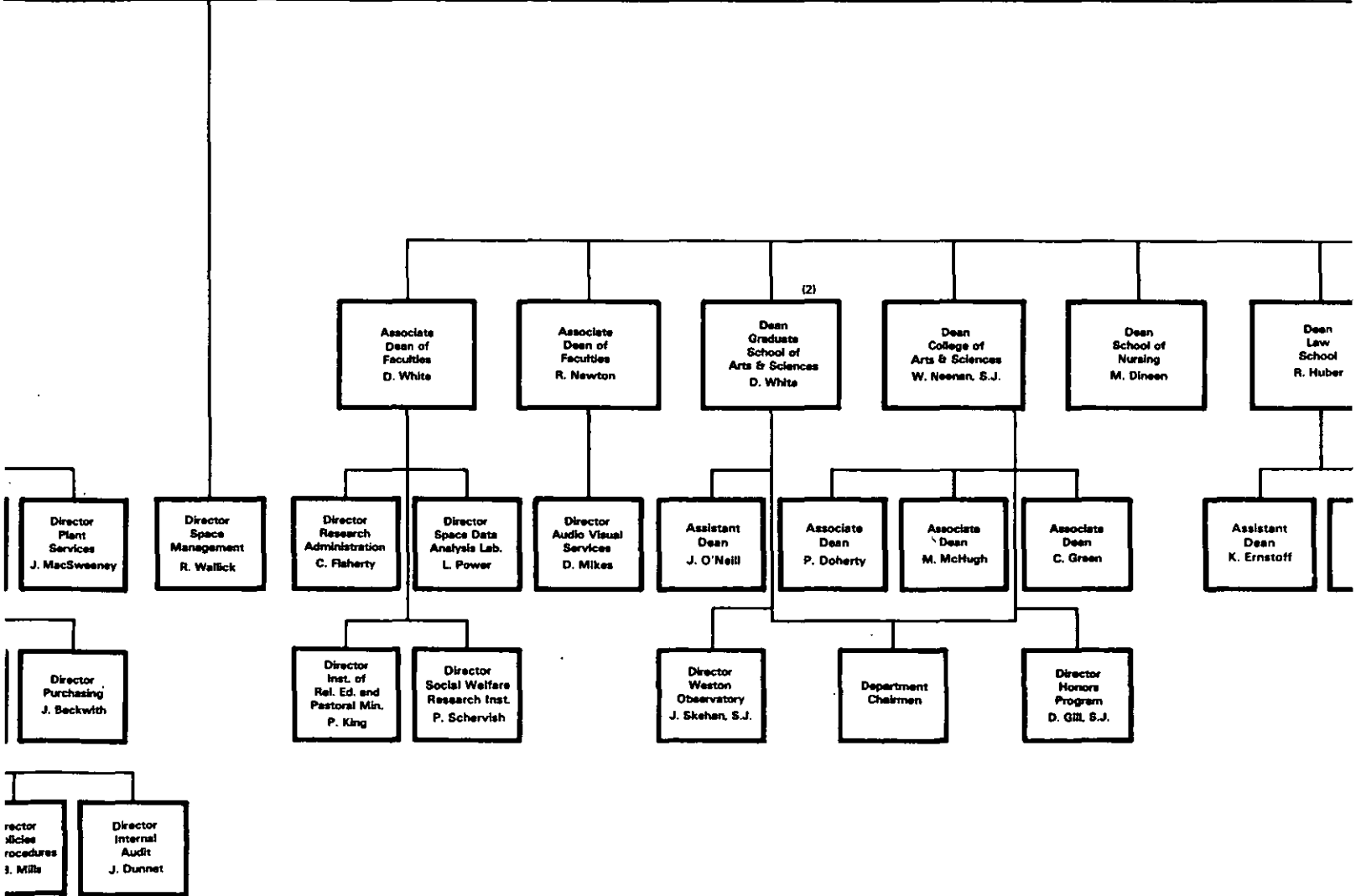
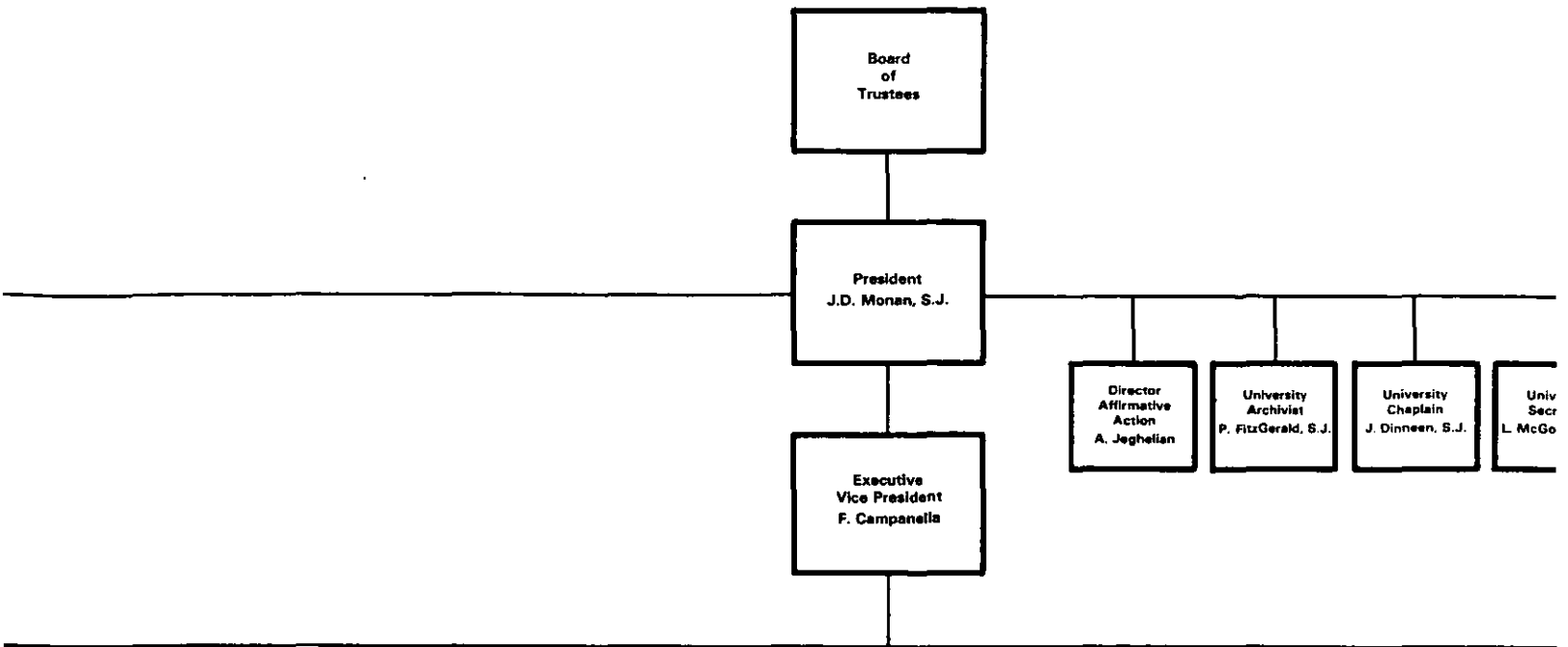
Joseph F. Abely, Jr.	1975-83	John Lowell	1972-79
Raymond C. Baumhart, S.J.	1972-73	Joseph F. MacDonnell, S.J.	1973-81
Geoffrey T. Boisi	1981-85	Francis C. Mackin, S.J.	1972-78, 1980-88
Milton C. Borenstein	1979-87	Joseph E. McCormick, S.J.	1977-85
Joseph G. Brennan	1972-73	John G. McElwee	1978-86
William L. Brown	1973-81 1983-87	Leo J. McGovern, S.J.	1974-77
Wayne A. Budd	1980-88	James T. McGuire	1982-86
Robert F. Byrnes	1972-73	John J. McMullen	1978-86
Raymond J. Callahan, S.J.	1983-87	William W. Meissner, S.J.	1979-87
Donald R. Campion, S.J.	1980-88	Robert A. Mitchell, S.J.	1972-80, 1982-86
Wallace E. Carroll	1972-74	J. Donald Monan, S.J.	1972-
John M. Cataldo	1978-86	Thomas M. Moran	1980-88
James F. Cleary	1972-80, 1982-86	Diane J. Morash	1977-81
William F. Connell	1974-86	Robert J. Morrissey	1980-88
John M. Connors, Jr.	1979-87	Giles E. Mosher, Jr.	1972-78
Joseph F. Cotter	1972-79	Emma Jeanne Mudd	1981-85
James H. Coughlin, S.J.	1972-75	Michael E. Murphy	1980-88
John F. Cunningham	1982-86	David S. Nelson	1972-78, 1979-87
Mary Lou DeLong	1984-88	Walter J. Neppi	1981-85
George L. Drury, S.J.	1977-85	Francis Nicholson, S.J.	1972-76
Francis Dubreuil	1972-73	William J. O'Halloran, S.J.	1972-78
Joseph P. Duffy, S.J.	1982-86	Joseph A. O'Hare, S.J.	1973-81
Christopher Duncan	1972-73	Robert J. O'Keefe	1974-82
Joseph R. Fahey, S.J.	1972-79, 1981-82	Adrian O'Keefe	1972-73
John T. Fallon	1972-78	James P. O'Neill	1973-85
Joseph A. Fitzmyer, S.J.	1972-73	Thomas P. O'Neill, Jr.	1972-88
Stephen E. Fix	1976-80	Cornelius W. Owens	1972-80
Thomas J. Flanagan	1979-87	John W. Padberg, S.J.	1975-83
Thomas J. Flatley	1978-86	John P. Reboli, S.J.	1972-75
Maureen Foley	1973-77	Clare A. Schoenfeld	1980-84
Jean Ford, R.S.C.J.	1974-77	Joseph L. Shea, S.J.	1972-77
Thomas J. Galligan, Jr.	1972-80	Daniel J. Shine, S.J.	1976-82
Thomas J. Gibbons, S.J.	1975-83	Helen M. Stanton	1977-85
Avram J. Goldberg	1972-78	Robert J. Starratt, S.J.	1978-86
Eli Goldston	1972-74	Robert L. Sullivan	1983-87
Patricia A. Goler	1972-80	Sandra J. Thomson	1977-85
Roberta L. Hazard	1984-88	Joseph F. Turley	1981-85
John J. Higgins, S.J.	1983-87	Thomas A. Vanderslice	1978-86
Anne P. Jones	1977-85	Michael P. Walsh, S.J.	1972-80
William J. Kenealy, S.J.	1972-74	An Wang	1978-82
Edward M. Kennedy	1976-87	Thomas J. Watson, III	1973-76
Mary M. Lai	1972-79	Thomas J. White	1972-76
T. Vincent Learson	1974-76	Blenda J. Wilson	1983-87
S. Joseph Loscocco	1972-77	Vincent C. Ziegler	1972-78

Source: President's Office

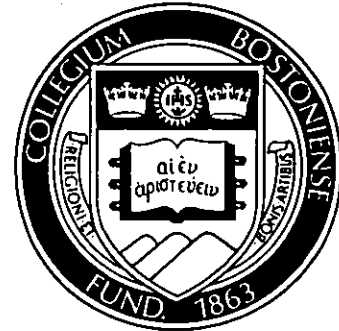


(1) AHANA – Afro-American, Hispanic, Asian, and Native American

Source: Office of Personnel Relations

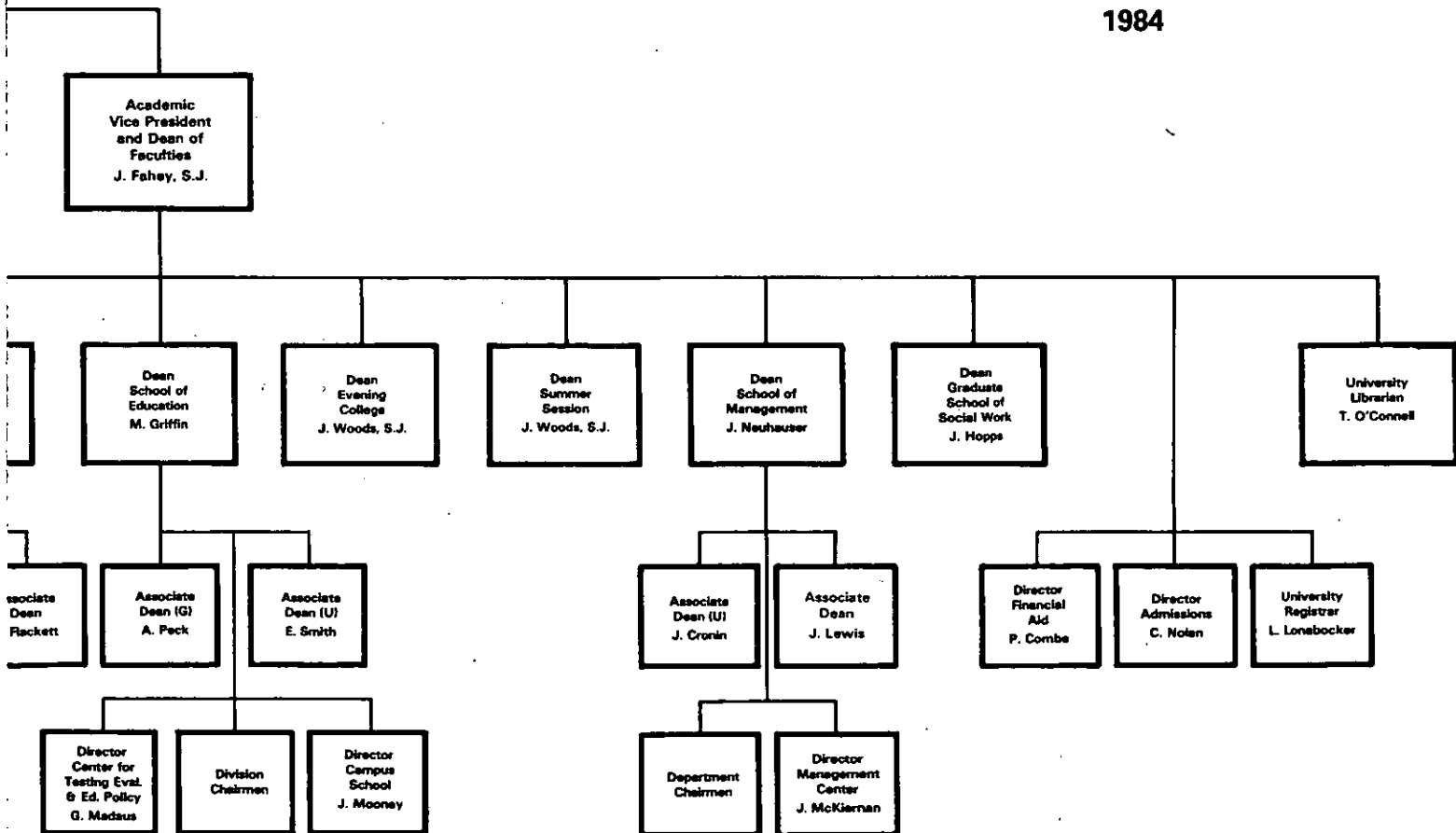


(2) Includes Graduate Programs in Education and Nursing



**BOSTON COLLEGE
CHART OF ADMINISTRATION
1984**

erty
ry
n, S.J.



BOARD OF TRUSTEE MEMBERSHIP†

1984-85

- Geoffrey T. Boisi, '69
General Partner
Goldman Sachs & Company
- Milton C. Borenstein, '35
Attorney
- William L. Brown
Chairman of the Board
First National Bank of Boston
- Wayne A. Budd, '63
President
Budd, Wiley & Richlin, P.C.
- Raymond J. Callahan, S.J., M.A. '64 B.D. '69
President
Boston College High School
- Donald R. Campion, S.J.
Spiritual Director
Fordham University
- John M. Cataldo, '44
President
National Freight Traffic Service
- James F. Cleary, '50
Managing Director
Blyth Eastman Paine Webber, Inc.
- *William F. Connell, '59
Chairman and Chief Executive Officer
Ogden Services Corporation
- *John M. Connors, Jr., '63
President
Hill, Holliday, Connors, Cosmopolos, Inc.
- John F. Cunningham, '64
President and Chief Operating Officer
Wang Laboratories, Inc.
- Mary Lou DeLong, '71 (Newton College)
Director of Special Gifts
Stevens Institute of Technology
- George L. Drury, S.J., '45, M.A. '46, M.S. '49, M.S. '58
Director of Retreats
Eastern Point Retreat House
- Joseph P. Duffy, S.J., '50, M.A. '51
Rector of the Jesuit Community
Boston College
- Thomas J. Flanagan, '42
Vice President
Arthur D. Little Program Systems
Management Company
- Thomas J. Flatley
President
The Flatley Company
- Roberta L. Hazard, USN, '56, M.Ed. '57
Commanding Officer, Naval Administrative Command
Navy Training Center, San Diego, CA
- John J. Higgins, S.J., '59, M.A. '60, S.T.L. '67
Assistant to the President
Fairfield University
- *Anne P. Jones, '58, J.D. '61
Partner
Sutherland, Asbill & Brennan
- Hon. Edward M. Kennedy, LL.D. '66 (Hon.)
United States Senator
- *Francis C. Mackin, S.J., M.A. '53
Pastor
Church of Saint Ignatius of Loyola
- Joseph E. McCormick, S.J., M.A. '46
Director for Vocations
Society of Jesus of New England
- John G. McElwee, J.D. '50
Chairman and Chief Executive Officer
John Hancock Mutual Life Insurance Co.
- James T. McGuire '39
Vice Chairman
Canteen Corporation
- John J. McMullen
Chairman
John J. McMullen Associates, Inc.
- William W. Meissner, S.J.
Professor of Clinical Psychiatry
Harvard Medical School
- Robert A. Mitchell, S.J.
President
University of Detroit
- *J. Donald Monan, S.J.
President
Boston College
- Thomas M. Moran, '48
President
T.M. Moran Co. Inc.
- Robert J. Morrissey, '60
Partner
Withington, Cross, Park & Groden
- Emma Jeanne Mudd
Boston College Parent
- Michael E. Murphy, '58
Executive Vice President and Chief Financial and
Administrative Officer
Consolidated Foods Corporation
- *Hon. David S. Nelson, '57, J.D. '60, LL.D. '79 (Hon.)
United States District Judge
- Walter J. Neppi
Vice Chairman of the Board (retired)
J.C. Penney Co., Inc.
- *James P. O'Neill, '42
Executive Vice President (retired)
Xerox Corporation
- Hon. Thomas P. O'Neill, Jr., '36, LL.D. '73 (Hon.)
Speaker of the House of Representatives
- Helen M. Stanton, M.S.W. '43
Boston College Alumna

†Only Boston College degrees listed.

*Executive Committee Member

Robert J. Starratt, S.J., '59, M.A. '60
Director
Commission on Research and Development
Jesuit Secondary Education Association

Robert L. Sullivan, '50, M.A. '52
International Practice Director,
Management Consulting
Peat, Marwick, Mitchell & Co.

Sandra J. Thomson, M.D., '58 (Newton College)
Department of Orthopaedic Surgery
Children's Hospital Medical Center

Joseph F. Turley
President and Chief Operating Officer
The Gillette Company

*Thomas A. Vanderslice, '53
President and Chief Executive Officer
Apollo Computer Inc.

Blenda J. Wilson, Ph.D. '79
Executive Director
Colorado Commission on Higher Education

*Executive Committee Member
Source: President's Office

TRUSTEE ASSOCIATE MEMBERSHIP† 1984

Joseph F. Abely, '50
Chairman and Chief Executive Officer
Sea-Land Corporation

Joseph F. Cotter, '49
Executive Vice President and
Comptroller
The Sheraton Corporation

John T. Fallon
Chairman of the Board and Chief Executive Officer
R.M. Bradley, Inc.

Thomas J. Galligan, Jr., '41, D.B.A. '75 (Hon.)
Chairman and Chief Executive Officer
Boston Edison Company

Thomas J. Gibbons, S.J., '53, M.A. '54, S.T.L. '61
Assistant to the Provincial for
Secondary Education

Avram J. Goldberg
President and Chief Executive Officer
The Stop & Shop Companies, Inc.

Patricia A. Goler, M.A. '51, Ph.D. '57
Dean of the College of Liberal Arts
University of Lowell

Mary M. Lai
Treasurer
Long Island University

John Lowell
Welch & Forbes

Joseph F. MacDonnell, S.J., '52, M.A. '59, S.T.B. '62
Associate Professor of Mathematics
Fairfield University

Giles E. Mosher, Jr., '55
Chairman of the Board and President
Baybank Middlesex

Joseph A. O'Hare, S.J.
President
Fordham University

Robert J. O'Keefe, '51
Senior Vice President
American Security Bank N.A.

Cornelius W. Owens, '36, LL.D. '68 (Hon.)
Executive Vice President (retired)
American Telephone & Telegraph Co.

John W. Padberg, S.J.
President
Weston School of Theology

Clare A. Schoenfeld, '72
Systems Liaison
J. Aron & Company

†Only Boston College degrees listed.
Source: President's Office

**OFFICERS OF THE UNIVERSITY
FALL 1984**

President
Executive Vice President
Vice President of Student Affairs
Vice President, Assistant to the President
Academic Vice President and Dean of Faculties
Secretary of the University
Vice President for University Relations
Financial Vice President and Treasurer

J. Donald Monan, S.J.
Frank B. Campanella
Kevin P. Duffy
Margaret A. Dwyer
Joseph R. Fahey, S.J.
Leo J. McGovern, S.J.
James P. McIntyre
John R. Smith

**ACADEMIC DEANS
FALL 1984**

Faculties

Robert R. Newton, Associate Dean
Donald J. White, Associate Dean

The College of Arts and Sciences

William B. Neenan, S.J., Dean
Paul C. Doherty, Associate Dean
Carol Hurd Green, Associate Dean
Marie M. McHugh, Associate Dean

The Evening College of Arts, Sciences and Business Administration

James A. Woods, S.J., Dean

The Graduate School of Arts and Sciences

Donald J. White, Dean
James M. O'Neill, Assistant Dean

The School of Education

Mary D. Griffin, Dean
Alec Peck, Associate Dean
Edward B. Smith, Associate Dean

The Law School

Richard G. Huber, Dean
John M. Flackett, Associate Dean
Kenneth H. Ernstoff, Assistant Dean

The School of Management

John J. Neuhauser, Dean
Justin C. Cronin, Associate Dean
John W. Lewis, III, Associate Dean

The School of Nursing

Mary A. Dineen, Dean

The Graduate School of Social Work

June G. Hopps, Dean

The Summer Session

James A. Woods, S.J., Dean

Source: Office of Personnel Relations

Note: Administrative positions listed on pages 6 and 7 are limited to those reflected on the Chart of Administration, page 3.

**UNIVERSITY ADMINISTRATORS
FALL 1984**

Director, Admissions

Charles S. Nolan

Director, Affirmative Action

Alice Jeghelian

Director, AHANA, Student Programs

Donald Brown

Executive Director, Alumni Association

John F. Wissler

University Archivist

Paul A. FitzGerald, S.J.

Director, Athletics

William J. Flynn

Director, University Audio-Visual Services

Donald Mikes

Director, University Budgets

James P. Kennedy

Director, Buildings and Grounds

Alfred G. Pennino

Director, Campus School

Jean F. Mooney

Director, Capital Asset Management

Michael T. Callnan

Director, Career Center

Marilyn S. Morgan

University Chaplain

John A. Dinneen, S.J.

Director, Communications

Paul J. Hennessy

Director, Computing Services

Donald S. Zitter

Controller

Catherine H. Briel

Director, University Counseling Services

Weston M. Jenks, Jr.

Director, Community Affairs

Laurence Barton

Director, Development

Dennis C. Macro

Director, Financial Aid

Paul C. Combe

Director, Financing Resources, Federal and State

Francis F. Mills

Director, Health Services

Arnold F. Mazur, M.D.

*Director, Honors Program, College of
Arts & Sciences*

David H. Gill, S.J.

Director, Housing

Richard E. Collins

Director, Internal Audit

John Dunnet

*Director, Learning Resources for
Student Athletes*

Kevin M. Lyons

University Librarian

Thomas F. O'Connell

Director, Management Center

John McKiernan

Director, Management Information Systems

Bernard W. Gleason, Jr.

Director, Personnel

Leo V. Sullivan

Director, Plant Services

Joseph F. MacSweeney

Director, University Policies and Procedures

Fred B. Mills, Jr.

Director, Purchasing

John D. Beckwith

University Registrar

Louise M. Lonabocker

*Director, Religious Education and
Pastoral Ministry*

Philip R. King

Director, Research Administration

Charles F. Flaherty

Director, Social Welfare Research Institute

Paul G. Schervish

Director, Space Data Analysis Laboratory

Leo F. Power, Jr.

Director, Space Management

Roderick G. Wallick

Dean of Students

Edward J. Hanrahan, S.J.

Director, Student Programs and Resources

Carole L. Wegman

*Director, Center for Testing Evaluation and
Educational Policy*

George F. Madaus

Manager, Theater Arts Center

Howard Enoch

Associate Treasurer

Paul P. Haran

Director, Weston Observatory

James W. Skehan, S.J.

**DEPARTMENT CHAIRMEN AND CHAIRWOMEN
FALL 1984**

Accounting	Louis S. Corsini
Administrative Sciences	Mary L. Hatten
Biology	R. Douglas Powers
Chemistry	T. Ross Kelly
Classical Studies	Eugene W. Bushala
Computer Sciences	Peter Kugel
Economics	Harold A. Petersen
English	E. Dennis Taylor
Finance	Jerry A. Viscione
Fine Arts	Michael W. Mulhern
Geology and Geophysics	John C. Hepburn
Germanic Studies	Christoph Eykman
History	Alan Rogers
Law	Alfred E. Sutherland
Marketing	Michael P. Peters
Mathematics	Paul R. Thie
Music	Olga Stone
Organizational Studies	John W. Lewis, III
Philosophy	Joseph F.X. Flanagan, S.J.
Physics	Rein A. Uritam
Political Science	Robert K. Faulkner
Psychology	Randolph Easton
Romance Languages and Literatures	Betty T. Rahv
Slavic and Eastern Languages	Lawrence G. Jones
Sociology	Michael A. Malec
Speech Communication and Theater	Donald Fishman
Theology	Robert J. Daly, S.J.

Source: Office of the Academic Vice President

**PROFESSIONAL, ADMINISTRATIVE AND SUPPORT STAFF PERSONNEL
AS OF FALL, 1984**

	Full-Time Positions				Part-Time Positions				Total Positions
	Male	Female	Open	Total	Male	Female	Open	Total	
Professional, Administrative									
President's, Executive Vice									
President's Offices*	11	9	-	20	3	2	-	5	25
Dean of Faculties**	53	69	7	129	9	8	1	18	147
Finance and Business	94	43	7	144	-	2	-	2	146
Student Affairs	54	35	2	91	28	31	7	66	157
University Relations	16	14	4	34	1	1	1	3	37
Total	<u>228</u>	<u>170</u>	<u>20</u>	<u>418</u>	<u>41</u>	<u>44</u>	<u>9</u>	<u>94</u>	<u>512</u>
Secretarial, Clerical, Technical									
Secretarial, Clerical	21	281	32	334	1	42	5	48	382
Library Assistants	23	40	2	65	1	6	2	9	74
Technical, other	27	8	4	39	16	4	1	21	60
Total	<u>71</u>	<u>329</u>	<u>38</u>	<u>438</u>	<u>18</u>	<u>52</u>	<u>8</u>	<u>78</u>	<u>516</u>
Buildings & Grounds, Plant Services									
Housekeeping	94	20	9	123	-	-	-	-	123
Grounds & Trades	77	1	5	83	2	-	-	2	85
Gate Attendants, Campus Police	38	4	1	43	11	-	1	12	55
Mailroom, Switchboard	11	6	-	17	3	5	1	9	26
Dining	64	29	1	94	8	6	-	14	108
Total	<u>284</u>	<u>60</u>	<u>16</u>	<u>360</u>	<u>24</u>	<u>11</u>	<u>2</u>	<u>37</u>	<u>397</u>
TOTAL POSITIONS	583	559	74	1,216	83	107	19	209	1,425

*Includes Chaplain's Office

**Includes Libraries

Source: Office of Personnel Relations

NOTE: The above figures represent all positions funded by the University as of Oct. 1, 1984. Sponsored research positions are not included. Positions funded partially by the University and partially by outside contracts or grants are counted above as part-time University positions.

**FACULTY BY SCHOOL AND RANK
1983-84**

School	Professor %		Associate %		Assistant %		Instructor %		Total	
	No.	Faculty	No.	Faculty	No.	Faculty	No.	Faculty	No.	%
Arts & Sciences	96	29	148	45	76	23	10	3	330	100
Education	17	34	17	34	8	16	8	16	50	100
Management	10	15	27	41	20	30	9	14	66	100
Nursing	4	7	20	35	17	29	17	29	58	100
Law	18	47	8	21	8	21	4	11	38	100
Social Work	5	24	11	52	5	24	-	-	21	100
Total	<u>150</u>	<u>27</u>	<u>231</u>	<u>41</u>	<u>134</u>	<u>24</u>	<u>48</u>	<u>8</u>	<u>563</u>	<u>100</u>

Source: Office of the Academic Vice President

**FULL-TIME EQUIVALENT FACULTY BY SCHOOL*
1983-84**

School	Full-Time		FTE of Part-Time		Total FTE Faculty	
	No.	%	No.	%	No.	%
Arts & Sciences	330	58	91.67	65	421.67	60
Education	50	9	12.83	9	62.83	9
Management	66	12	10.83	8	76.83	11
Nursing	58	10	5.67	4	63.67	9
Law	38	7	7.33	5	45.33	6
Social Work	21	4	13.33	9	34.33	5
Total	<u>563</u>	<u>100</u>	<u>141.66</u>	<u>100</u>	<u>704.66</u>	<u>100</u>

*Method of computation: three courses equals one full-time faculty member.

Source: Office of the Academic Vice President

NOTE: Figures representing full-time faculty do not include the following: full-time academic administrators or directors, teaching fellows, special contracts; part-time academic administrators or staff.

Graduate faculty of the Departments of Education and Nursing of the Graduate School of Arts and Sciences are included in tables with their respective schools.

**FACULTY BY SCHOOL AND TENURE STATUS
1983-84**

School	Tenured %		Non-Tenured %		Total	
	No.	Faculty	No.	Faculty	No.	%
Arts & Sciences	249	75	81	25	330	100
Education	34	68	16	32	50	100
Management	34	52	32	48	66	100
Nursing	23	40	35	60	58	100
Law	21	55	17	45	38	100
Social Work	12	57	9	43	21	100
Total	<u>373</u>	66	<u>190</u>	34	<u>563</u>	100

Source: Office of the Academic Vice President

**FACULTY BY SCHOOL AND SEX
1983-84**

School	Women		Men		Total	% Women Men	
	No.	%	No.	%		Women	Men
Arts & Sciences	64	41	266	66	330	19	81
Education	12	8	38	9	50	24	76
Management	5	3	61	15	66	8	92
Nursing	57	36	1	-	58	98	2
Law	8	5	30	7	38	21	79
Social Work	11	7	10	3	21	52	48
Total	<u>157</u>	<u>100</u>	<u>406</u>	<u>100</u>	<u>563</u>	28	72

Source: Office of the Academic Vice President

**FACULTY BY HIGHEST EARNED DEGREE AND RANK
1983-84**

Degree	Professor		Associate		Assistant		Instructor		Total	
	No.	%	No.	%	No.	%	No.	%	No.	%
Doctorate	146	26	213	38	98	17	8	1	465	82
Masters	1	-	16	3	31	6	30	5	78	14
First Professional*	3	1	2	-	5	1	10	2	20	4
Total	<u>150</u>	<u>27</u>	<u>231</u>	<u>41</u>	<u>134</u>	<u>24</u>	<u>48</u>	<u>8</u>	<u>563</u>	<u>100</u>

*Including LLB, STB, PhL, and STL.

Source: Office of the Academic Vice President

**FACULTY BY HIGHEST EARNED DEGREE AND SEX
1983-84**

Degree	Women		Men		Total	
	No.	%	No.	%	No.	%
Doctorate	102	65	363	89	465	83
Masters	50	32	29	7	79	14
First Professional*	5	3	14	4	19	3
Total	<u>157</u>	<u>100</u>	<u>406</u>	<u>100</u>	<u>563</u>	<u>100</u>

*Including LLB, STB, PhL, and STL.

Source: Office of the Academic Vice President

**FACULTY BY RANK AND SEX
1983-84**

Rank	Women		Men		Total	
	No.	%	No.	%	No.	%
Professor	22	14	128	32	150	27
Associate	61	39	170	42	231	41
Assistant	48	30	86	21	134	24
Instructor	26	17	22	5	48	8
Total	<u>157</u>	<u>100</u>	<u>406</u>	<u>100</u>	<u>563</u>	<u>100</u>

Source: Office of the Academic Vice President

**FULL-TIME FACULTY, GRADUATE ASSISTANTS, TEACHING FELLOWS
BY SCHOOL AND DEPARTMENTS
1983-84**

	Full-Time Faculty	Graduate Asst's.	Teaching Fellows
Arts & Sciences			
Biology	16	28	6
Chemistry	18	33	-
Classics	3	-	-
Economics	21	27	13
English	37	-	14
Fine Arts	11	(No Graduate Dept.)	
Geology	10	15	-
German	4	(No Graduate Dept.)	
History	35	11	8
Mathematics	22	-	12
Music	2	(No Graduate Dept.)	
Philosophy	25	7	19
Physics	10	19	-
Political Science	18	16	-
Psychology	19	6	-
Romance Languages	14	4	12
Slavic/Eastern	4	-	-
Sociology	19	27	6
Speech	10	(No Graduate Dept.)	
Theology	32	4	9
Arts & Sciences			
Total	<u>330</u>	<u>197</u>	<u>99</u>
Education	50	69	9
Law	38	-	-
Management	66	-	-
Nursing	58	-	-
Religious Education	-	4	-
Social Work	21	23	-
Total	<u>563</u>	<u>293</u>	<u>108</u>

*School of Education Graduate Assistants include 17 in Audio-Visual Services.

Source: Office of the Academic Vice President; Dean of Graduate School of Arts and Sciences.

AVERAGE COMPENSATION BY RANK*
AAUP CATEGORY I
(9-MONTH EQUIVALENT)
1983-84

Rank	Boston College	All Combined Category	Church-Related
Professor	\$52,600	\$49,580	\$50,120
Associate	39,700	36,030	37,540
Assistant	32,100	29,680	30,490
Instructor	27,000	22,530	26,130

*Includes salary and fringe benefits.

Sources: Office of the Academic Vice President; Academe, page 11, August, 1984.

BOSTON COLLEGE FACULTY
AVERAGE COMPENSATION BY RANK*

Year	Professor	Associate	Assistant	Instructor
1976-77	\$29,800	\$23,300	\$18,900	\$16,300
1977-78	31,500	24,500	19,700	16,500
1978-79	34,100	26,000	20,700	15,900
1979-80	37,000	27,800	22,000	18,000
1980-81	40,700	30,500	24,500	19,400
1981-82	44,500	33,400	25,900	20,700
1982-83	50,900	37,900	30,100	23,600
1983-84	52,600	39,700	32,100	27,000

*Includes salary and fringe benefits.

Source: Office of the Academic Vice President

STUDENTS



**FULL-TIME FRESHMAN ENROLLMENT
BY YEAR AND SEX**

Fall	Enrollment		Total
	Men	Women	
1975	962	1,069	2,031
1976	1,041	1,091	2,132
1977	1,028	1,177	2,205
1978	901	1,176	2,077
1979	856	1,186	2,042
1980	927	1,244	2,171
1981	796	1,148	1,944
1982	946	1,242	2,188
1983	981	1,357	2,338
1984	1,030	1,276	2,306

Source: Admissions Office

**FRESHMAN ENROLLEES
SAT AVERAGES BY CLASS**

Class	Verbal	Mathematical
1979	504	544
1980	511	550
1981	496	538
1982	509	544
1983	516	552
1984	512	555
1985	507	555
1986	506	549
1987	509	557
1988	519	567

Source: Admissions Office

**FRESHMAN APPLICATIONS, ACCEPTANCES AND ENROLLMENT
(FULL-TIME)**

Fall	Applications	Acceptances	Acceptances % of Applications	Total Enrollment	Enrollment % of Acceptances	Enrollment % of Applications
1975	9,486	4,952	52	2,031	41	21
1976	10,848	5,548	51	2,132	38	20
1977	11,336	5,479	48	2,205	37	18
1978	12,411	4,821	39	2,077	43	17
1979	12,505	4,514	36	2,042	45	16
1980	12,640	4,389	35	2,171	49	17
1981	12,748	4,227	33	1,944	46	15
1982	12,110	5,233	43	2,188	42	18
1983	12,414	4,890	39	2,338	48	19
1984	14,398	5,100	35	2,306	45	16

Source: Admissions Office

NOTE: Freshman enrollments as reported herein are actual deposits received, on or before the deadline set by the Committee on Admissions, from students accepting the offer of admission extended by the University. Withdrawals may occur during the summer and the first two weeks in September.

Acceptance and enrollment figures reported are based on deposits received as of 8/14/84.

**CLASS OF 1988
APPLICATIONS, ACCEPTANCES AND ENROLLEES
GEOGRAPHIC DISTRIBUTION**

State	Applications	Acceptances	Enrollees	State	Applications	Acceptances	Enrollees
Alabama	3	2	2	Nevada	12	5	2
Alaska	10	4	2	New Hampshire	272	86	37
Arizona	8	4	1	New Jersey	1,522	379	172
Arkansas	8	3	-	New Mexico	8	4	-
California	310	74	28	New York	2,420	670	266
Colorado	57	15	6	North Carolina	24	12	3
Connecticut	1,507	410	196	North Dakota	1	-	-
Delaware	38	18	11	Ohio	224	75	38
District of Columbia	44	16	2	Oklahoma	10	2	1
Florida	246	73	27	Oregon	16	4	1
Georgia	40	12	6	Pennsylvania	582	190	90
Hawaii	19	10	5	Puerto Rico	115	60	25
Idaho	3	2	1	Rhode Island	466	175	87
Illinois	293	90	49	South Carolina	12	-	-
Indiana	33	5	2	South Dakota	2	1	1
Iowa	9	6	2	Tennessee	17	5	3
Kansas	8	5	3	Texas	69	25	8
Kentucky	11	1	-	Utah	8	5	2
Louisiana	28	15	11	Vermont	80	22	10
Maine	174	65	37	Virgin Islands	6	1	1
Maryland	305	101	44	Virginia	124	40	17
Massachusetts	4,412	2,131	988	Washington	28	11	5
Michigan	162	50	23	West Virginia	15	6	2
Minnesota	71	21	11	Wisconsin	70	28	13
Mississippi	1	1	1	Wyoming	2	-	-
Missouri	77	27	11	Foreign	290	120	47
Montana	3	1	1				
Nebraska	22	12	5	Total	14,297	5,100	2,306

Source: Admissions Office

**UNDERGRADUATE TRANSFER STUDENT
APPLICATIONS, ACCEPTANCES AND ENROLLMENT (FULL-TIME)**

Fall*	Applications	Acceptances	Acceptances % of Applications	Total Enrollment	Enrollment % of Acceptances	Enrollment % of Applications
1980	2,066	619	30	379	61	18
1981	1,840	581	32	341	59	19
1982	1,617	660	41	375	57	23
1983	1,731	544	31	305	56	18
1984	1,953	491	26	306	63	16

Source: Admissions Office

**UNDERGRADUATE TRANSFER STUDENT ENROLLMENT
BY TYPE OF PREVIOUS INSTITUTION AND SEX**

Fall*	2-Year Public	2-Year Private	4-Year Public	4-Year Private	Total	Men	Women	Total
1980	43	25	93	218	379	124	255	379
1981	26	47	74	194	341	131	210	341
1982	28	30	71	246	375	130	245	375
1983	15	21	55	214	305	97	208	305
1984	25	22	55	204	306	112	194	306

*Transfer enrollment typically increases 75-125 students second semester.

Source: Admissions Office

**GRADUATE AND UNDERGRADUATE ENROLLMENT
FULL- AND PART-TIME**

Year	Undergraduate			Graduate			Total
	F.T.*	P.T.	Total	F.T.	P.T.	Total	
1975-76	8,749	1,095	9,844	1,881	1,820	3,701	13,545
1976-77	8,792	1,107	9,899	1,880	1,833	3,713	13,612
1977-78	9,066	1,221	10,287	1,837	1,844	3,681	13,968
1978-79	8,846	1,339	10,185	1,911	1,817	3,728	13,913
1979-80	8,842	1,480	10,322	1,845	1,810	3,655	13,977
1980-81	9,090	1,677	10,767	1,919	1,759	3,678	14,445
1981-82	8,980	1,667	10,647	1,921	1,598	3,519	14,166
1982-83	8,877	1,652	10,529	1,878	1,662	3,540	14,069
1983-84	8,928	1,576	10,504	1,796	1,759	3,555	14,059
1984-85	8,923	1,660	10,583	1,748	1,879	3,627	14,210

*Includes full-time students in Evening College.

Source: Registrar

**UNDERGRADUATE DAY AND EVENING
AND
GRADUATE ENROLLMENT**

Year	Undergraduate			Graduate/ Professional	Total
	Day	Evening	Total		
1975-76	8,463	1,381	9,844	3,701	13,545
1976-77	8,486	1,413	9,899	3,713	13,612
1977-78	8,705	1,582	10,287	3,681	13,968
1978-79	8,483	1,702	10,185	3,728	13,913
1979-80	8,474	1,848	10,322	3,655	13,977
1980-81	8,729	2,038	10,767	3,678	14,445
1981-82	8,589	2,058	10,647	3,519	14,166
1982-83	8,516	2,013	10,529	3,540	14,069
1983-84	8,628	1,876	10,504	3,555	14,059
1984-85	8,601	1,982	10,583	3,627	14,210

Source: Registrar

NOTE: All enrollment statistics are as of the sixth week of the first semester. Enrollment figures fluctuate throughout the year as a result of withdrawals, transfers, and mid-year graduations.

UNDERGRADUATE ENROLLMENT BY SCHOOL

Year	A&S	SOM	Education	Nursing	Evening	Total
1975-76	4,651	1,947	1,150	715	1,381	9,844
1976-77	4,848	1,911	1,021	706	1,413	9,899
1977-78	5,013	2,010	926	756	1,582	10,287
1978-79	4,826	2,076	812	769	1,702	10,185
1979-80	4,839	2,159	753	723	1,848	10,322
1980-81	5,022	2,261	765	681	2,038	10,767
1981-82	5,024	2,191	728	646	2,058	10,647
1982-83	5,049	2,203	641	623	2,013	10,529
1983-84	5,172	2,240	628	588	1,876	10,504
1984-85	5,138	2,243	623	597	1,982	10,583

Source: Registrar

GRADUATE ENROLLMENT BY SCHOOL

Year	A&S*	SOM	Social Work	Law	Total
1975-76	2,302	398	267	734	3,701
1976-77	2,255	446	258	754	3,713
1977-78	2,187	493	243	758	3,681
1978-79	2,157	503	271	797	3,728
1979-80	2,129	489	252	785	3,655
1980-81	2,124	496	280	778	3,678
1981-82	1,915	483	329	792	3,519
1982-83	1,848	484	363	845	3,540
1983-84	1,854	513	358	830	3,555
1984-85	1,882	552	362	831	3,627

*Includes Graduate Education and Nursing.

Source: Registrar

GRADUATE ENROLLMENT*
BY DEGREE PROGRAM AND DISCIPLINE
FULL- AND PART-TIME

	1980-81		1981-82		1982-83		1983-84	
	Masters	Ph.D.	Masters	Ph.D.	Masters	Ph.D.	Masters	Ph.D.
American Studies	21	1	10	1	9	1	8	1
A&S Unspecified	15	3	21	2	2	2	1	1
Biology	44	17	40	16	34	13	37	16
Chemistry	23	25	19	24	22	30	30	35
Classics	9	-	6	-	4	-	4	-
Economics	13	65	10	59	8	63	6	64
Education	795	471	642	439	612	444	618	443
English	76	20	63	24	49	23	52	23
French	29	12	18	10	20	11	19	10
Geology	16	-	12	-	11	-	14	-
Geology-Geophysics	30	-	29	-	39	-	56	-
Geophysics	6	-	5	-	5	-	2	-
Greek	-	-	1	-	-	-	-	-
History	34	25	29	30	28	29	35	27
Interdisciplinary	3	14	7	9	5	9	3	8
Italian	5	-	5	-	6	-	5	-
Latin	3	-	4	-	3	-	3	-
Law	789	-	796	-	865	-	847	-
Management	588	-	583	-	599	-	613	-
Mathematics	13	-	10	-	12	-	16	-
Mathematics NSF	-	-	-	-	-	-	49	-
Nursing	123	-	124	-	90	-	83	-
Philosophy	40	45	35	50	32	48	37	51
Physics	8	23	5	23	6	21	6	25
Political Science	42	33	24	30	32	31	48	32
Psychology	2	41	3	34	3	26	2	19
Religious Education**	124	4	132	4	126	4	127	6
Russian	4	-	3	-	4	-	3	-
Slavic	3	-	3	-	2	-	3	-
Social Work	288	-	357	-	382	-	383	-
Sociology	40	48	38	54	29	51	27	58
Spanish	15	6	14	6	16	6	15	7
Theology	30	37	31	41	28	37	35	32
Total	3,231	890	3,079	856	3,083	849	3,187	858

*Figures include students who attended for just one semester, as well as those who attended a full year.

**Previously included in "A&S Unspecified" and "Education."

Source: Registrar

**UNDERGRADUATE AND GRADUATE ENROLLMENT
BY SEX**

Year	Undergraduate		Graduate/ Professional		Total		Total Enrollment
	Men	Women	Men	Women	Men	Women	
1975-76	4,779	5,065	1,908	1,793	6,687	6,858	13,545
1976-77	4,695	5,204	1,867	1,846	6,562	7,050	13,612
1977-78	4,850	5,437	1,802	1,879	6,652	7,316	13,968
1978-79	4,625	5,560	1,783	1,945	6,408	7,505	13,913
1979-80	4,556	5,766	1,701	1,954	6,257	7,720	13,977
1980-81	4,603	6,164	1,642	2,036	6,245	8,200	14,445
1981-82	4,471	6,176	1,542	1,977	6,013	8,153	14,166
1982-83	4,397	6,132	1,540	2,000	5,937	8,132	14,069
1983-84	4,418	6,086	1,577	1,978	5,995	8,064	14,059
1984-85	4,515	6,068	1,559	2,068	6,074	8,136	14,210

Source: Registrar

FULL-TIME EQUIVALENT ENROLLMENT*

Year	Undergraduate			Graduate/ Professional	Total
	Day	Evening	Total		
1975-76	8,463	651	9,114	2,486	11,600
1976-77	8,486	675	9,161	2,491	11,652
1977-78	8,705	768	9,473	2,440	11,913
1978-79	8,483	809	9,292	2,516	11,808
1979-80	8,474	861	9,335	2,448	11,783
1980-81	8,729	920	9,649	2,505	12,154
1981-82	8,589	947	9,536	2,454	11,990
1982-83	8,500	928	9,428	2,432	11,860
1983-84	8,616	837	9,453	2,382	11,835
1984-85	8,579	897	9,476	2,374	11,850

*Method of computation: three part-time students equal one full-time equivalent student.

Source: Registrar

EVENING COLLEGE ENROLLMENT

Year	Full-Time		Part-Time		Total		Total
	Men	Women	Men	Women	Men	Women	
Fall 1979-80	201	167	550	930	751	1,097	1,848
Spring 1979-80	173	133	449	761	622	894	1,516
Fall 1980-81	200	161	587	1,090	787	1,251	2,038
Spring 1980-81	154	142	494	788	648	930	1,578
Fall 1981-82	189	202	616	1,051	805	1,253	2,058
Spring 1981-82	153	164	480	843	633	1,007	1,640
Fall 1982-83	174	211	598	1,030	772	1,241	2,013
Spring 1982-83	118	184	537	839	655	1,023	1,678
Fall 1983-84	161	157	578	980	739	1,137	1,876
Spring 1983-84	155	147	550	804	705	951	1,656
Fall 1984-85	201	154	649	978	850	1,132	1,982

Source: Registrar

SUMMER SESSION ENROLLMENT

Summer	Undergraduate	Graduate/ Professional*	Total
1975	889	1,876	2,765
1976	887	1,732	2,619
1977	898	1,714	2,612
1978	924	1,679	2,603
1979	1,068	1,590	2,658
1980	1,122	1,700	2,822
1981	1,136	1,759	2,895
1982	1,349	1,784	3,133
1983	1,948	1,473	3,421
1984	1,840	1,589	3,429

*Includes students registered through Institute of Religious Education, and Graduate School of Management.

Source: Summer Session Office

GEOGRAPHIC DISTRIBUTION OF STUDENTS*
(GRADUATE AND UNDERGRADUATE)
FALL 1984

	Undergrad.	Evening	Grad. A&S	Social Work	Grad. SOM	Law School	Total	
Alabama	6	-	-	-	-	-	6	
Arizona	3	-	-	-	-	-	3	
Arkansas	1	-	-	-	-	-	1	
California	79	3	10	-	2	22	116	
Colorado	16	-	2	-	-	4	22	
Connecticut	853	9	32	5	12	33	944	
D.C.	12	-	3	-	1	1	17	
Delaware	22	-	3	-	-	1	26	
Florida	123	1	2	-	-	9	135	
Georgia	12	-	3	-	-	3	18	
Hawaii	11	-	2	-	1	8	22	
Idaho	-	-	3	-	-	-	3	
Illinois	172	1	5	1	3	12	194	
Indiana	1	-	4	1	1	-	16	
Iowa	3	-	1	-	-	2	6	
Kansas	8	-	2	-	-	1	11	
Kentucky	5	-	1	-	-	2	8	
Louisiana	1	-	7	-	-	-	17	
Maine	125	1	18	36	2	2	184	
Maryland	137	1	5	-	2	9	154	
Massachusetts	3,827	1,910	1,417	291	463	494	8,402	
Michigan	75	-	8	-	-	2	85	
Minnesota	38	1	3	-	5	2	49	
Mississippi	1	-	-	-	-	-	1	
Missouri	25	-	2	-	-	-	27	
Montana	1	-	-	-	-	-	1	
Nebraska	12	1	-	-	-	2	15	
Nevada	4	-	-	-	-	-	4	
New Hampshire	154	7	74	8	15	11	269	
New Jersey	691	9	25	1	8	39	773	
New Mexico	1	-	1	-	-	-	2	
New York	1,047	15	67	6	6	87	1,228	
North Carolina	9	-	-	-	-	1	1	
North Dakota	-	-	-	-	-	-	-	
Ohio	106	-	9	-	-	1	125	
Oklahoma	1	-	1	-	-	1	3	
Oregon	3	-	1	-	-	-	4	
Pennsylvania	263	4	21	-	3	16	307	
Puerto Rico			(Included with foreign students)					
Rhode Island	342	8	52	10	9	35	456	
South Carolina	2	1	1	-	-	1	5	
South Dakota	1	-	-	-	-	1	2	
Tennessee	10	-	-	-	-	1	11	
Texas	21	2	4	-	-	2	29	
Utah	3	-	-	-	-	-	3	
Vermont	27	-	6	-	1	4	38	
Virginia	49	2	13	1	-	3	68	
Virgin Islands			(Included with foreign students)					
Washington	9	-	4	-	-	4	15	
West Virginia	3	-	1	-	-	-	4	
Wisconsin	34	-	4	1	-	-	39	
Wyoming	-	-	-	-	-	-	-	
Foreign	234	6	65	1	18	8	332	
Totals	8,601	1,982	1,882	362	552	831	14,210	

*These figures are based on the state which the student lists as a permanent address, which may not necessarily reflect the true "home" state or country.

Source: Registrar

**INTERNATIONAL STUDENT AND SCHOLAR STATISTICS
FALL 1983**

BY SCHOOL

College of Arts & Sciences	100
School of Management	72
School of Education	6
School of Nursing	1
Graduate School of Arts & Sciences	105
Graduate School of Social Work	4
Graduate School of Management	27
Law School	<u>5</u>
Sub-total	320
Practical Training (Field Work)	9
Post Doctoral Research Scholars	<u>46</u>
Total	375

Source: Office of Student Programs & Resources

BY CLASS OR PROGRAM

Freshmen	36	
Sophomores	57	
Juniors	46	
Seniors	<u>40</u>	
Total Undergraduate		179
Graduate/Professional		
Masters	79	
Ph.D	56	
J.D.	4	
Special Programs	<u>2</u>	
Total Graduate/Professional		141
Practical Training		9
Research Scholars		<u>46</u>
Total		375

Source: Office of Student Programs & Resources

BY SEX AND PROGRAM

Program	Men	Women	Total
Undergraduate	99	80	179
Graduate	81	60	141
Practical Training	6	3	9
Research Scholars	<u>39</u>	<u>7</u>	<u>46</u>
Total	225	150	375

Source: Office of Student Programs & Resources

**INTERNATIONAL STUDENT AND SCHOLAR ENROLLMENT
BY COUNTRY
FALL 1983**

Argentina	5	Korea	9
Australia	6	Kuwait	1
Bahrain	1	Lebanon	5
Bangladesh	1	Libya	1
Belgium	1	Malaysia	1
Bermuda	5	Mexico	4
Bolivia	4	Morocco	4
Brazil	3	Netherlands	5
Canada	13	New Zealand	1
Chile	1	Nicaragua	4
Colombia	13	Nigeria	4
Costa Rica	1	Norway	1
Cyprus	5	Pakistan	1
Dominican Republic	2	Panama	8
Ecuador	6	People's Republic of China	19
Egypt	24	Peru	6
El Salvador	3	Philippines	10
France	9	Portugal	2
Germany	3	Republic of China (Taiwan)	8
Greece	9	Singapore	1
Guatemala	2	Spain	6
Guyana	1	Sudan	1
Hong Kong	12	Switzerland	2
Iceland	1	Tanzania	1
India	16	Thailand	9
Indonesia	2	Trinidad & Tobago	2
Iran	17	Turkey	5
Ireland	18	United Arab Emirates	1
Israel	1	United Kingdom	9
Italy	12	Venezuela	26
Jamaica	3	Zaire	2
Japan	12	Zimbabwe	1
Jordan	2	Total Student and Scholars	375
Kenya	1	Countries Represented	66

Source: Office of Student Programs and Resources

**UNDERGRADUATE AND GRADUATE
MINORITY ENROLLMENT**

Undergraduate	1981-82			1982-83			1983-84			1984-85		
	Men	Women	Total	Men	Women	Total	Men	Women	Total	Men	Women	Total
Black	109	116	225	86	112	198	75	115	190	91	107	198
American Indian	2	5	7	2	5	7	2	5	7	6	9	15
Oriental	104	155	259	113	172	285	111	180	291	111	193	304
Hispanic	124	162	286	138	188	326	140	203	343	145	211	356
Other	73	88	161	87	107	194	75	93	168	69	73	142
	<u>412</u>	<u>526</u>	<u>938</u>	<u>426</u>	<u>584</u>	<u>1,010</u>	<u>403</u>	<u>596</u>	<u>999</u>	<u>422</u>	<u>593</u>	<u>1,015</u>
Graduate												
Black	42	50	92	44	51	95	37	46	83	35	45	80
American Indian	2	3	5	2	3	5	3	5	8	2	4	6
Oriental	41	38	79	44	44	88	46	48	94	52	55	107
Hispanic	33	37	70	37	40	77	32	37	69	36	41	77
Other	29	43	72	33	45	78	37	44	81	37	46	83
	<u>147</u>	<u>171</u>	<u>318</u>	<u>161</u>	<u>183</u>	<u>344</u>	<u>155</u>	<u>180</u>	<u>335</u>	<u>162</u>	<u>191</u>	<u>353</u>
Total Graduate and Undergraduate	559	697	1,256	587	767	1,354	558	776	1,334	584	784	1,368

Source: Registrar

**VETERANS ENROLLED AT BOSTON COLLEGE
1984-85**

School	Men	Women	Full-Time	Part-Time	Total
Arts and Sciences	8	5	13	-	13
Education	-	3	3	-	3
Evening College	13	2	5	10	15
Nursing	-	2	1	1	2
Management	7	4	11	-	11
Graduate School of A&S	11	2	7	6	13
Graduate SOM	5	-	2	3	5
Law School	7	-	7	-	7
Social Work	2	-	2	-	2
Total	<u>53</u>	<u>18</u>	<u>51</u>	<u>20</u>	<u>71</u>

Source: Registrar

**UNDERGRADUATE DEGREES CONFERRED*
BY DEGREE AND NUMBER OF MAJORS**

	1979-80	1980-81	1981-82	1982-83	1983-84
Arts and Sciences					
A.B.					
Single Major	653	717	792	816	912
Double Major	308	259	233	212	222
Triple Major	3	1	-	1	1
	<u>964</u>	<u>977</u>	<u>1,025</u>	<u>1,029</u>	<u>1,135</u>
B.S.					
Single Major	168	140	168	175	170
Double Major	42	50	37	32	37
Triple Major	-	1	-	-	-
	<u>210</u>	<u>191</u>	<u>205</u>	<u>207</u>	<u>207</u>
Total A&S	1,174	1,168	1,230	1,236	1,342
School of Education-A.B.					
Single Major	174	194	170	154	120
Double Major	2	9	29	17	16
Triple Major	-	-	-	-	-
	<u>176</u>	<u>203</u>	<u>199</u>	<u>171</u>	<u>136</u>
School of Management-B.S.					
Single Major	386	444	440	410	391
Double Major	72	79	112	107	135
Triple Major	-	-	2	1	1
	<u>465</u>	<u>556</u>	<u>549</u>	<u>541</u>	<u>527</u>
School of Nursing-B.S.	201	177	178	186	142
Subtotal-Undergraduate Degrees	<u>2,016</u>	<u>2,104</u>	<u>2,156</u>	<u>2,134</u>	<u>2,147</u>
Evening College					
A.B.	93	97	109	123	126
B.S.	-	-	-	-	-
	<u>93</u>	<u>97</u>	<u>109</u>	<u>123</u>	<u>126</u>
Total Undergraduate Degrees Conferred	2,109	2,201	2,265	2,257	2,273

*Sept.-Jan.-May
Source: Registrar

**UNDERGRADUATE DEGREES CONFERRED
BY MAJOR***

	1979-80	1980-81	1981-82	1982-83	1983-84
Accounting	159	191	162	178	179
American Studies	-	1	-	1	-
Art History	5	1	17	7	12
Biology	156	144	149	154	161
Chemistry	29	32	36	31	26
Classics	3	1	2	2	3
Computer Science	49	69	73	96	111
Early Childhood Education	-	-	-	7	10
Early Childhood & Special Education	-	-	-	-	7
Early Childhood Special Needs	-	-	-	10	-
Economics	204	204	203	162	208
English	175	825	186	205	212
Elementary Education	54	51	59	35	26
Finance	63	53	109	97	115
French	17	10	15	16	18
General Management	16	31	17	23	21
Geology	17	8	4	13	11
Geophysics	-	4	4	3	2
German	1	3	3	2	3
History	87	78	89	54	87
Human Development	2	26	49	49	48
Independent	2	1	-	1	3
Italian	1	2	-	1	2
Linguistics	1	2	3	3	-
Management	2	-	-	-	-
Marketing	163	184	151	132	122
Mathematics	42	48	70	84	66
Nursing	201	177	178	186	142
Operations Management	1	1	4	3	-
Organizational Studies/Human Resources Management	-	5	11	13	7
Philosophy	34	48	41	28	43
Physics	8	3	12	7	7
Political Science	124	132	124	165	151
Psychology	122	106	124	112	116
Romance Languages	5	4	13	6	7
Russian	2	3	2	4	4
Secondary Education	16	28	10	5	13
Severe Special Needs	-	-	-	5	6
Slavic Studies	2	1	2	-	-
Sociology	54	80	63	48	39
Spanish	15	8	10	18	15
Special Education/Alternative Environments	15	11	7	11	3
Special Education/Elementary Education**	81	81	72	49	23
Speech Communication	64	64	63	95	91
Speech Theater	3	2	7	1	4
Studio Art	13	19	18	10	9
Theology	8	5	4	2	14
Total***	2,016	2,104	2,156	2,134	2,147

*Double and Triple majors counted by first major.

**Elementary Education majors with concentration in Special Education.

***Evening College majors are not included in this total.

Source: Registrar

Accou
Ameri
Art Hi
Biolog
Chemi
Classi
Comp
Early C
Early C
Se
Early C
Econ
Englis
Elem
Finan
Frencl
Gener
Geolo
Geopl
Germ
Histor
Huma
Indep
Italian
Lingu
Mana
Mark
Math
Nursi
Opera
Org.
R
Philo
Physi
Politi
Psyc
Roma
Russi
Seco
Seve
Slavi
Socic
Span
Sp. E
E
Sp. E
Spee
Spee
Stud
Theo

*Evening
Source:

**UNDERGRADUATE DEGREES CONFERRED
BY SCHOOL AND BY MAJOR**

	1982							1983							1984						
	A.&S.		Ed.	SOM	Nurs.	Total		A.&S.		Ed.	SOM	Nurs.	Total		A.&S.		Ed.	SOM	Nurs.	Total	
	A.B.	B.S.	A.B.	B.S.	B.S.			A.B.	B.S.	A.B.	B.S.	B.S.			A.B.	B.S.	A.B.	B.S.	B.S.		
Accounting				162		162					178		178						179	179	
American Studies	1					-							1							-	
Art History	17					17		7					7		12					12	
Biology		149				149		154					154		161					161	
Chemistry		36				36		31					31		26					26	
Classics	2					2		2					2		3					3	
Computer Science	2			71		73		9			87		96		34			77		111	
Early Childhood Education						-			7				7			10				10	
Early Childhood & Special Education						-							-			7				7	
Early Childhood Special Needs						-				10		10								-	
Economics	179			24		203		154			8		162		202			6		208	
English	185		1			186		205					205		212					212	
Elementary Education			59			59			35				35			26				26	
Finance				109		109					97		97			115				115	
French	15					15		16					16		18					18	
General Management				17		17					23		23					21		21	
Geology		4				4			13				13		11					11	
Geophysics		4				4			3				3		2					2	
German	3					3		2					2		3					3	
History	89					89		54					54		87					87	
Human Development			49			49				49			49			48				48	
Independent						-		1					1		3					3	
Italian						-		1					1		2					2	
Linguistics	3					3		3					3		-					-	
Management						-							-					122		-	
Marketing				151		151					132		132							122	
Mathematics	70					70		84					84		66					66	
Nursing						178							186							142	
Operations Management				4		4					3		3							-	
Org. Studies/Human Resources Mgmt.				11		11					13		13			7				7	
Philosophy	41					41		28					28		43					43	
Physics		12				12			1	6			7		7					7	
Political Science	124					124		165					165		151					151	
Psychology	124					124		112					112		116					116	
Romance Languages	13					13		6					6		7					7	
Russian	2					2		4					4		4					4	
Secondary Education			10			10				5			5			13				13	
Severe Special Needs						-				5			5			6				6	
Slavic Studies	2					2		2					-							-	
Sociology	62		1			63		48					48		39					39	
Spanish	10					10		18					18		15					15	
Sp. Ed/Alternative Environments			7			7				11			11			3				3	
Sp. Ed/Elementary Education				72		72				49			49			23				23	
Speech Communication	63					63		95					95		91					91	
Speech Theater	7					7		1					1		4					4	
Studio Art	8					8		10					10		9					9	
Theology	4					4		2					2		14					14	
Total*	1,025	205	199	549	178	2,156		1,029	207	171	541	186	2,134		1,135	207	136	527	142	2,147	

*Evening College majors are not included in this total.

Source: Registrar

**UNDERGRADUATE AND GRADUATE DEGREES CONFERRED*
BY DEGREE AND BY SEX**

	1980-81			1981-82			1982-83			1983-84		
	Men	Women	Total	Men	Women	Total	Men	Women	Total	Men	Women	Total
Undergraduate												
College of A.&S.												
A.B.	460	517	977	466	559	1,025	443	586	1,029	505	630	1,135
B.S.	121	70	191	120	85	205	117	90	207	130	77	207
Total A.&S.	<u>581</u>	<u>587</u>	<u>1,168</u>	<u>586</u>	<u>644</u>	<u>1,230</u>	<u>560</u>	<u>676</u>	<u>1,236</u>	<u>635</u>	<u>707</u>	<u>1,342</u>
School of Ed.-A.B.	23	180	203	24	175	199	6	165	171	17	119	136
School of Nursing-B.S.	2	175	177	2	176	178	3	183	186	4	138	142
School of Management-B.S.	351	205	556	330	219	549	281	260	541	268	259	527
Subtotal Undergraduate	<u>957</u>	<u>1,147</u>	<u>2,104</u>	<u>942</u>	<u>1,214</u>	<u>2,156</u>	<u>850</u>	<u>1,284</u>	<u>2,134</u>	<u>924</u>	<u>1,223</u>	<u>2,147</u>
Evening College A.B.	45	52	97	59	50	109	43	80	123	45	81	126
Undergraduate Degrees Conferred	<u>1,002</u>	<u>1,199</u>	<u>2,201</u>	<u>1,001</u>	<u>1,264</u>	<u>2,265</u>	<u>893</u>	<u>1,364</u>	<u>2,257</u>	<u>969</u>	<u>1,304</u>	<u>2,273</u>
Graduate												
Ph.D.	52	37	89	40	28	68	31	37	68	50	36	86
D.Ed.	8	1	9	9	3	12	9	5	14	3	4	7
M.A.	59	88	147	73	123	196	59	128	187	58	103	161
M.S.	20	106	126	12	101	113	18	87	105	15	83	98
M.Ed.	53	160	213	44	163	207	36	112	148	18	82	100
M.A.T.	2	3	5	2	4	6	2	2	4	1	4	5
M.S.T.	-	5	5	1	3	4	-	-	-	2	1	3
J.D.	190	78	268	154	93	247	153	105	258	132	129	261
M.B.A.	73	71	144	95	42	137	75	62	137	78	62	140
M.S.P.	-	-	-	-	-	-	-	-	-	-	-	-
M.S.W.	22	72	94	24	78	102	22	121	143	19	110	129
C.A.E.S.	14	16	30	8	25	33	8	17	25	4	10	14
Total Graduate Degrees Conferred	<u>493</u>	<u>637</u>	<u>1,130</u>	<u>462</u>	<u>663</u>	<u>1,125</u>	<u>413</u>	<u>676</u>	<u>1,089</u>	<u>380</u>	<u>624</u>	<u>1,004</u>
Total Undergraduate Degrees Conferred	<u>1,002</u>	<u>1,199</u>	<u>2,201</u>	<u>1,001</u>	<u>1,264</u>	<u>2,265</u>	<u>893</u>	<u>1,364</u>	<u>2,257</u>	<u>969</u>	<u>1,304</u>	<u>2,273</u>
Total Undergraduate and Graduate Degrees**	<u>1,495</u>	<u>1,836</u>	<u>3,331</u>	<u>1,463</u>	<u>1,927</u>	<u>3,390</u>	<u>1,306</u>	<u>2,040</u>	<u>3,346</u>	<u>1,349</u>	<u>1,928</u>	<u>3,277</u>

*Sept.-Jan.-May

**See page 70: "Degrees Conferred by Boston College."

Source: Registrar

UNDERGRADUATE AND GRADUATE FINANCIAL AID
1980-84
THOUSANDS OF DOLLARS

	1980-81	1981-82	1982-83	1983-84
Type of Aid – Undergraduate				
University Scholarships and Grants ¹	\$ 4,982	\$ 6,262	\$ 7,694	\$ 9,715
State Scholarships ²	1,158	1,287	1,331	1,712
Pell Grants ³	2,252	1,758	1,745	1,591
Supplemental Educational Opportunity Grants ⁴	1,002	1,001	810	998
Work-Study ⁵	1,944	1,771	2,286	1,816
National Direct Student Loans ⁶	2,638	2,336	2,510	2,501
Undergraduate Total	<u>\$13,976</u>	<u>\$14,415</u>	<u>\$16,376</u>	<u>\$18,333</u>
Type of Aid – Graduate				
Work-Study	292	215	385	320
National Direct Student Loans ⁵	579	421	487	573
Total Undergraduate and Graduate	<u>\$14,847</u>	<u>\$15,051</u>	<u>\$17,248</u>	<u>\$19,226</u>

NUMBER OF AWARDS

	1980-81	1981-82	1982-83	1983-84
Type of Aid – Undergraduate				
University Scholarships and Grants ¹	3,807	4,275	4,695	4,504
State Scholarships ²	1,587	1,746	1,751	1,860
Pell Grants ³	2,241	1,935	1,633	1,374
Supplemental Educational Opportunity Grants ⁴	1,248	1,462	1,833	1,513
Work-Study	1,730	1,518	1,557	2,004
National Direct Student Loans ⁵	2,932	3,154	2,180	2,778
Undergraduate Total ⁶	<u>13,545</u>	<u>14,090</u>	<u>13,649</u>	<u>14,033</u>
Type of Aid – Graduate				
Work-Study	236	186	242	379
National Direct Student Loans ⁵	326	284	375	412
Total Undergraduate and Graduate ⁶	<u>14,107</u>	<u>14,560</u>	<u>14,266</u>	<u>14,824</u>

¹This statistic includes regular university scholarships and grants (through the operating budget), faculty kin tuition remission, minority scholarships, athletic grants, Jesuit Reduction, Alumni Association Scholarships, and endowed monies for scholarships.

²State scholarship funds to students from Massachusetts, Vermont, Connecticut, New Jersey, Pennsylvania, Rhode Island, Maryland, Maine, New Hampshire.

³Students who are enrolled at least half-time in an undergraduate degree program are eligible to apply for these grants. Formerly Basic Educational Opportunity Grants, grants are awarded to students with need, and eligibility is determined directly by the Federal Government.

⁴Available to students enrolled at least half-time in an undergraduate degree program. These grants are awarded to students with exceptional need and are termed "last resort." The amount of the award must be matched by an equal amount of other aid.

⁵Available to undergraduates and graduates enrolled at least half-time. These loan funds are obtained by Federal Government contributions, Boston College contributions and collections of previous loans awarded. The loans have up to a 10-year repayment period with an interest rate of 5% per year on the unpaid balance.

⁶This is a duplicated total since some students receive more than one type of aid.

NOTE: In an effort to minimize statistical detail, the above data does not include Boston College graduate student assistance (approximately \$2,034,087 in 1983-84), administered by the various schools and departments. Also excluded are the Nursing and Loan Programs (\$89,500 in 1983-84), a variety of government fellowships or scholarships from fraternal organizations and clubs (\$1,062,514 in 1983-84), and Higher Education Loans processed by the Financial Aid Office and disbursed by banks (\$12,622,858 in 1983-84), all of which are open to both undergraduate and graduate students. (In addition to these programs, the Student Employment Office placed 4,080 students in summer and term jobs both on and off campus, and the university processed parental loans totaling \$2,512,702 from banks and the Mass. College Student Loan Authority.)

Source: Financial Aid Office.

**HEALTH SERVICES
NUMBER OF STUDENTS SERVED**

Grand Totals	1979-80	1980-81	1981-82	1982-83	1983-84
Total Visits to M.D.	17,980	19,858	20,037	19,506	19,840
Total Visits to Nurse Practitioner	1,552	1,648	1,994	1,889	2,596
Total Visits to R.N.	7,427	7,599	7,686	7,594	7,693
Total Visits to Non-Professionals for First Aid	-	-	-	417	652
Total	<u>26,959</u>	<u>29,115</u>	<u>29,717</u>	<u>29,406</u>	<u>30,781</u>
Infirmery*					
Total Admissions	572	704	667	672	697
Men	(286)	(276)	(289)	(283)	(273)
Women	(286)	(428)	(378)	(389)	(424)
Total Patient Days	1,396	1,520	1,592	1,576	1,542
Average Daily Census	6.5	6.6	6.5	7.1	7.2
Average Length of Stay (days)	2.4	2.0	2.4	2.6	2.2
Number of Days in Full Operation	212	217.5	217	216	215

*Included in Grand Totals

Source: Health Services Office

**UNIVERSITY COUNSELING SERVICES
NUMBER OF STUDENTS, FACULTY-STAFF SERVED***

School	1979-80	1980-81	1981-82	1982-83	1983-84
Arts and Sciences	1,034	1,077	1,120	1,150	1,111
Education	159	164	153	126	112
Evening College	18	27	17	32	26
Nursing	181	153	156	139	139
Management	359	366	350	274	367
Total Undergraduate	<u>1,751</u>	<u>1,787</u>	<u>1,796</u>	<u>1,721</u>	<u>1,755</u>
Graduate School of A&S	61	58	49	55	57
Graduate SOM	14	11	16	24	13
Law School	96	99	128	125	131
Social Work	24	18	21	14	26
Total Graduate/Professional	<u>195</u>	<u>186</u>	<u>214</u>	<u>218</u>	<u>227</u>
Faculty-Staff	46	44	52	37	54
Total Served	<u>1,992</u>	<u>2,017</u>	<u>2,062</u>	<u>1,976</u>	<u>2,036</u>

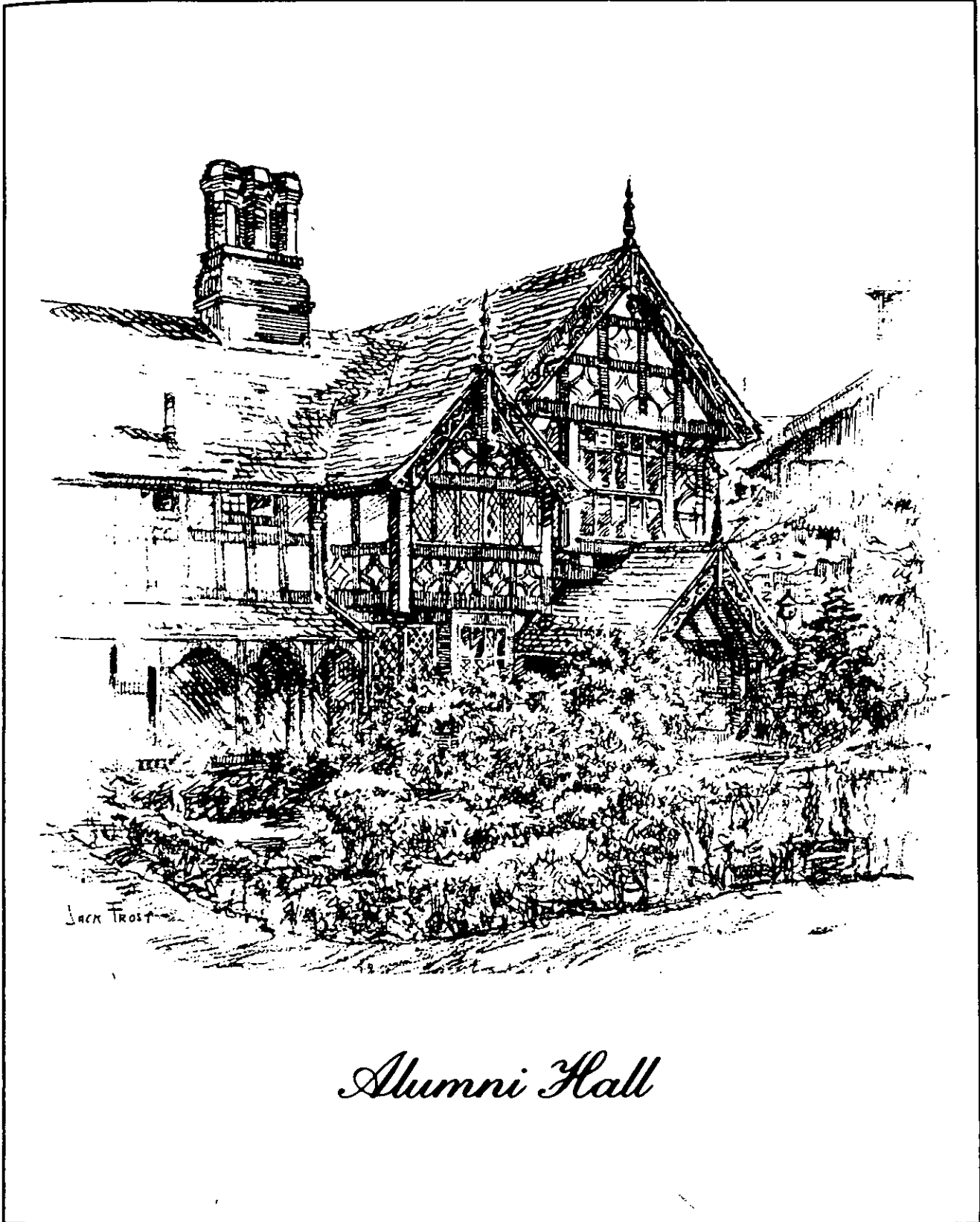
**COUNSELING SERVICES PROVIDED
UNDERGRADUATE AND GRADUATE STUDENTS*
1983-84**

Academic	%	Vocational	%	Psychological	%	Total	%
257	13	140	7	1,585	80	1,982	100

*Includes students served by the College Mental Health Center of Boston

Source: University Counseling Services

ALUMNI



Alumni Hall

BOSTON COLLEGE ALUMNI CLUBS

Arizona	Merrimack Valley
Atlanta	Mid-Hudson
Buffalo	Minnesota
Cape Cod	New Hampshire
Central New York	New Jersey
Chicago	North Shore
Cincinnati	Northern California (San Francisco)
Cleveland	Philadelphia
Dallas	Pittsburgh
Denver	Rhode Island
Detroit	Rochester
Fairfield County	St. Louis
Florida	San Diego
Hartford	Washington, D.C.
Houston	Western Massachusetts (Springfield)
Long Island	Wisconsin
Los Angeles	Worcester
Maine	Young Alumni of New York City
Manhattan Business Group	

Source: Alumni Association

ALUMNI ASSOCIATION BOARD OF DIRECTORS With Committee Assignments 1984-85

<p>Hon. Joseph P. Warner, '58, Law '61 <i>President</i></p> <p>Hon. Sheila E. McGovern, '57, Law '60 <i>Vice President, President-Elect, Awards</i></p> <p>Paul F. McPherson, '52 <i>Treasurer, Career Planning</i></p> <p>Marie J. Kelleher, '55, SW '69 <i>Secretary, Continuing Education</i></p> <p>Kevin M. Bannon, '76 <i>Young Alumni</i></p> <p>Alexis W. Blood, '52 <i>Annual Fund, Nominations</i></p> <p>Trudy M. Burns, NC '73, Law '78 <i>Women's Resources</i></p> <p>Mary C. Byrne, SW '55 <i>Social Work</i></p> <p>William J. Byrne, '62 <i>Clubs</i></p> <p>Jane T. Crimlisk, EC '74 <i>Evening College</i></p> <p>Sahag R. Dakesian, '49 <i>Nominations</i></p> <p>Mary Pat Doherty, '76 <i>Classes</i></p>	<p>Eric D. Duncanson, '79 <i>AHANA</i></p> <p>Martin D. Gavin, '69, M.B.A. '74 <i>Nominations</i></p> <p>Cheryl D. Gray, '81 <i>AHANA</i></p> <p>Kathleen D. Hegenbert, NC '67 <i>Women's Resources</i></p> <p>Paul M. Kane, '64, Law '70 <i>Law School</i></p> <p>Raymond J. Kenney, Jr., '53, Law '58 <i>Career Planning, Nominations</i></p> <p>Elaine Kiuber, M.B.A. '81 <i>Graduate Business</i></p> <p>Mary F. McCabe, '75, Law '78 <i>Awards</i></p> <p>Hon. George A. O'Toole, Jr., '69 <i>Continuing Education</i></p> <p>Charles A. Phillips, '45 <i>Career Planning</i></p> <p>Harry S. Son, '55 <i>Nominations</i></p> <p>Christopher J. Toomey, '78 <i>Admissions</i></p>
--	--

1984 William V. McKenney Award, Samuel T. Church, '43

1984 Awards of Excellence

Education - Dr. William E. Hogan, '49, Law '52	Public Service - Capt. Roberta L. Hazard, USN, '56, M.A. '57
Commerce - John M. Dempsey, Jr., '50, M.A. '55	Science - Joseph B. Dowd, M.D. '49
Religion - Rev. Ernest P. Pearsall, '31	

Source: Alumni Association

**ALUMNI
COMPARATIVE REGIONAL ANALYSIS
FALL 1984**

Massachusetts	
Metropolitan Boston	
Postal Areas 01701-02009	10,272
02101-02215	20,831
Massachusetts Outside	
Metropolitan Boston	<u>11,909</u>
Total Massachusetts Alumni	43,012
New England	
Connecticut	4,096
Maine	880
New Hampshire	1,697
Rhode Island	1,758
Vermont	<u>347</u>
Total New England Outside Massachusetts	8,778
Massachusetts	<u>43,012</u>
Total New England	51,790
Total Outside New England	24,004
Lost Alumni	<u>6,887</u>
Total Alumni	<u>82,681</u>

Source: Information Services, University Relations

**ALUMNI
GEOGRAPHIC ANALYSIS BY STATE
FALL 1984**

Alabama	65	Maine	880	Puerto Rico	159
Alaska	55	Maryland	1,232	Rhode Island	1,758
Arizona	212	Massachusetts	43,012	South Carolina	76
Arkansas	22	Michigan	449	South Dakota	17
California*	2,153	Minnesota	225	Tennessee	116
Colorado	283	Mississippi	24	Texas	650
Connecticut	4,096	Missouri	216	Utah	32
Delaware	124	Montana	28	Vermont	347
District of Columbia	509	Nebraska	59	Virgin Islands	24
Florida	1,166	Nevada	35	Virginia	1,267
Georgia	296	New Hampshire	1,697	Washington*	223
Guam	4	New Jersey	2,732	West Virginia	33
Hawaii	103	New Mexico	72	Wisconsin	228
Idaho	23	New York*	5,873	Wyoming	<u>18</u>
Illinois	977	North Carolina	263	Total U.S.	74,674
Indiana	161	North Dakota	11	Foreign Nations	<u>1,120</u>
Iowa	73	Ohio	770	Total Active Alumni	75,794
Kansas	61	Oklahoma	75	Lost Alumni	<u>6,887</u>
Kentucky	100	Oregon	96		
Louisiana	155	Pennsylvania	1,339	Total Alumni	82,681

*California, New York and Washington include APO addresses.

NOTE: Also included are individuals who attended Boston College for at least one year without graduating. These alumni are referred to as "EX". Please note the last columns of pages 36-37 which list these alumni with their classes.

Double- and triple-degreed alumni are counted by their primary (or first-received) degree only.

Source: Information Services, University Relations

**LIVING ALUMNI BY PRIMARY SCHOOL, SEX AND CLASS
FALL 1984**

Class	A.&S.	Ed.	S.O.M.	S.O.N.	Evening College	Newton College	Grad. A.&S.	Grad. S.O.M.	Social Work	Law	Weston Theo.	EX Alumni	Total	Women	Men	Total	Class
1900												2	2		2	2	1900
1901												-	-		-	-	1901
1902												1	1		1	1	1902
1903												1	1		1	1	1903
1904	1											1	2		2	2	1904
1905	-											-	-		-	-	1905
1906	-											-	-		-	-	1906
1907	1											-	1		1	1	1907
1908	-											-	-		-	-	1908
1909	1											-	1		1	1	1909
1910	2											-	2		2	2	1910
1911	2											-	2		2	2	1911
1912	1						-					-	1		1	1	1912
1913	1						3					-	4		4	4	1913
1914	-						1					-	1		1	1	1914
1915	4						2					1	7		7	7	1915
1916	13						-					5	18		18	18	1916
1917	6						-					3	9		9	9	1917
1918	6						-					1	7		7	7	1918
1919	5						-					6	11		11	11	1919
1920	16						1					11	28		28	28	1920
1921	18						1					15	34		34	34	1921
1922	22						1					9	32		32	32	1922
1923	29						-					8	37		37	37	1923
1924	40				-		-				8	12	60	-	60	60	1924
1925	45				-		1				7	17	70	-	70	70	1925
1926	82				1		3				10	15	111	-	111	111	1926
1927	81				-		10				8	12	111	9	102	111	1927
1928	92				1		15				11	13	132	11	121	132	1928
1929	92				3		14				10	8	127	5	122	127	1929
1930	108				12		12				5	18	155	21	134	155	1930
1931	126				10		16				16	27	195	23	172	195	1931
1932	129				13		16			6	8	32	204	18	186	204	1932
1933	158				15		30			11	20	35	269	36	233	269	1933
1934	175				20		32			17	12	32	288	44	244	288	1934
1935	190				24		24			16	11	27	292	37	255	292	1935
1936	161				18		17			21	7	36	260	28	232	260	1936
1937	185				20		24			28	3	55	315	33	282	315	1937
1938	196				33		17		11	26	2	42	327	40	287	327	1938
1939	230				36		32		6	29	1	56	390	56	334	390	1939
1940	245		-		29		23		12	29	2	46	386	39	347	386	1940
1941	199		-		40		19		15	23	2	31	329	44	285	329	1941
1942	201		46		34		31		10	14	1	45	382	51	331	382	1942
1943	217		43		22		11		12	17	1	55	378	34	344	378	1943

Source

**LIVING ALUMNI BY PRIMARY SCHOOL, SEX AND CLASS
(CONTINUED)**

Class	A.&S.	Ed.	S.O.M.	S.O.N.	Evening College	Newton College	Grad. A.&S.	Grad. S.O.M.	Social Work	Law	Weston Theo.	EX Alumni	Total	Women	Men	Total	Class
1944	167		52		13		4		11	6	2	67	322	24	298	322	1944
1945	106		21		16		12		9	5	1	186	356	34	322	356	1945
1946	14		2		27		22		17	12	3	45	142	53	89	142	1946
1947	137		23		20		31		22	26	3	38	300	46	254	300	1947
1948	166		75	-	19	-	34		25	46	2	3	370	53	317	370	1948
1949	412		96	25	36	-	58		26	74	1	20	748	112	636	748	1949
1950	821		310	37	23	33	68		27	86	3	33	1441	145	1296	1441	1950
1951	770		348	42	50	28	98		28	100	6	51	1521	171	1350	1521	1951
1952	478		304	71	56	30	61		25	87	1	35	1148	171	977	1148	1952
1953	409		260	78	54	40	120		36	64	1	27	1089	234	855	1089	1953
1954	349		233	114	65	20	135		28	53	2	53	1052	259	793	1052	1954
1955	292		200	122	73	37	119		26	49	3	34	955	282	673	955	1955
1956	300	137	287	123	76	36	125		28	61	5	78	1256	382	874	1256	1956
1957	329	100	256	132	60	50	105		27	62	4	87	1212	347	865	1212	1957
1958	373	132	356	170	66	59	138		25	59	3	141	1522	466	1056	1522	1958
1959	362	120	350	152	80	75	124		31	73	16	110	1493	433	1060	1493	1959
1960	329	130	344	205	135	99	201	2	34	62	20	47	1608	584	1024	1608	1960
1961	286	96	292	153	73	99	162	8	33	80	38	31	1351	470	881	1351	1961
1962	324	131	242	191	92	123	106	27	40	91	23	49	1439	554	885	1439	1962
1963	479	167	329	168	62	138	255	31	32	75	30	50	1816	654	1162	1816	1963
1964	483	187	361	134	78	186	218	25	46	81	34	59	1892	679	1213	1892	1964
1965	424	181	357	146	78	134	237	34	49	107	42	57	1846	618	1228	1846	1965
1966	440	183	347	218	74	158	265	42	53	112	36	47	1975	757	1218	1975	1966
1967	454	197	381	184	84	151	421	53	56	92	33	49	2155	804	1351	2155	1967
1968	552	282	419	141	64	185	373	49	52	117	28	57	2319	831	1488	2319	1968
1969	546	236	400	118	86	187	514	46	51	137	36	71	2428	915	1513	2428	1969
1970	537	233	354	145	91	208	481	100	59	115	-	65	2388	981	1407	2388	1970
1971	535	284	385	162	69	174	525	78	85	147	-	66	2510	1022	1488	2510	1971
1972	615	289	399	138	79	252	571	59	89	173	22	74	2760	1148	1612	2760	1972
1973	609	249	319	152	69	247	514	60	79	197	-	62	2557	1110	1447	2557	1973
1974	963	323	382	156	80	199	415	67	99	203	-	49	2936	1378	1558	2936	1974
1975	928	296	334	208	110	210	551	78	111	177	-	8	3011	1608	1403	3011	1975
1976	1161	367	493	226	87	5	587	74	102	204	-	4	3310	1712	1598	3310	1976
1977	1035	290	450	163	76	-	420	71	104	220	-	-	2829	1544	1285	2829	1977
1978	1212	257	454	170	93	-	485	77	92	194	-	2	3036	1557	1479	3036	1978
1979	1106	221	504	194	110	-	460	108	116	217	-	1	3037	1674	1363	3037	1979
1980	1184	170	470	199	96	-	481	116	121	229	-	1	3067	1705	1362	3067	1980
1981	1175	209	559	174	91	-	502	128	90	238	-	3	3169	1774	1395	3169	1981
1982	1241	194	557	175	111	-	518	121	99	211	-	1	3228	1870	1358	3228	1982
1983	1262	165	560	179	146	-	416	120	130	229	-	-	3207	1949	1258	3207	1983
1984	1321	133	525	136	91	-	238	120	109	225	-	-	2898	1652	1246	2898	1984
Total	27766	5959	13479	5301	3290	3163	11526	1694	2388	5033	543	2539	82681	33291	49390	82681	Total

Source: Information Services, University Relations

**ALUMNI DONORS BY PRIMARY SCHOOL AND CLASS
1983-1984**

Class	A.&S.	Ed.	S.O.M.	S.O.N.	Evening College	Newton College	Grad. A.&S.	Grad. S.O.M.	Social Work	Law	Weston Theo.	EX Alumni	Total Alumni Donors	Class
1907	-												-	1907
1908	-												-	1908
1909	1												1	1909
1910	-												-	1910
1911	-												-	1911
1912	-												-	1912
1913	-												-	1913
1914	-												-	1914
1915	-											-	-	1915
1916	6											2	8	1916
1917	-											1	1	1917
1918	3											1	4	1918
1919	1						-					1	2	1919
1920	5						1					-	6	1920
1921	3						-					5	8	1921
1922	9						-					3	12	1922
1923	11						-					4	15	1923
1924	17						-					2	19	1924
1925	18						-					3	21	1925
1926	44						-					1	45	1926
1927	41				-		1					2	44	1927
1928	55				-		-					3	58	1928
1929	51				-		2					3	56	1929
1930	55				1		1					1	58	1930
1931	64				1		4			-	-	9	78	1931
1932	56				-		-			1	1	7	65	1932
1933	62				2		1			2	-	6	73	1933
1934	119				2		7			3	-	23	154	1934
1935	72				2		5		-	2	-	6	87	1935
1936	65				2		2		-	7	-	7	83	1936
1937	82				2		2		-	4	-	9	99	1937
1938	80				6		1		4	12	-	2	105	1938
1939	118		-		6		1		2	7	-	9	143	1939
1940	99		-		6		2		3	6	-	5	121	1940
1941	79		-		2		2		4	6	-	8	101	1941
1942	88		16		6		3		5	7	-	6	131	1942
1943	64		21		-		2		1	5	-	10	103	1943
1944	75		30		3		-		4	-	-	9	121	1944
1945	44		5		1		1		2	2	-	18	73	1945
1946	6		1		3		1		6	4	-	7	28	1946

**ALUMNI DONORS BY PRIMARY SCHOOL AND CLASS
(CONTINUED)**

Class	A.&S.	Ed.	S.O.M.	S.O.N.	Evening College	Newton College	Grad. A.&S.	Grad. S.O.M.	Social Work	Law	Weston Theo.	EX Alumni	Total Alumni Donors	Class
1947	39		7	-	2	-	4		5	6	-	3	66	1947
1948	54		29	-	3	-	7		6	10	-	1	110	1948
1949	144		36	7	7	-	2		4	24	-	4	228	1949
1950	237		119	10	5	9	11		8	38	-	3	440	1950
1951	226		98	9	8	5	17		8	29	-	10	410	1951
1952	136		70	11	20	8	5		8	23	-	5	286	1952
1953	130		70	19	14	6	16		10	17	-	4	286	1953
1954	104		78	29	18	2	31		3	11	-	2	278	1954
1955	79	-	48	36	13	5	11		4	13	-	4	213	1955
1956	95	30	70	34	15	9	24		5	17	-	13	312	1956
1957	91	19	53	28	15	9	7		5	20	-	5	252	1957
1958	103	29	104	35	11	10	17		5	18	-	5	337	1958
1959	118	42	129	39	20	11	118	-	-	19	-	5	501	1959
1960	93	42	102	17	26	25	23	2	7	13	-	2	352	1960
1961	89	24	80	34	14	11	22	3	5	13	-	4	299	1961
1962	78	24	73	51	16	16	9	7	6	32	-	5	317	1962
1963	141	51	88	36	19	14	20	4	2	24	1	4	404	1963
1964	147	50	119	30	16	30	17	5	6	25	3	1	449	1964
1965	119	47	106	31	20	20	23	4	7	31	1	1	410	1965
1966	133	36	102	49	15	16	27	12	7	31	1	2	431	1966
1967	142	41	108	39	24	18	43	18	7	31	4	4	479	1967
1968	165	49	121	26	12	22	30	14	9	39	2	2	491	1968
1969	166	52	108	22	24	22	35	11	2	52	2	4	500	1969
1970	151	47	124	23	17	29	35	20	7	31	-	1	485	1970
1971	144	55	109	25	15	25	55	26	6	49	-	4	513	1971
1972	169	53	94	24	19	22	39	25	7	58	-	5	515	1972
1973	143	45	82	33	13	23	35	18	6	70	-	4	472	1973
1974	264	54	121	28	23	12	30	11	3	61	-	1	608	1974
1975	176	52	73	33	20	21	36	14	8	62	-	1	496	1975
1976	234	66	151	41	12	-	41	23	9	41	-	-	618	1976
1977	209	36	108	29	15	-	31	13	5	48	-	-	494	1977
1978	251	36	85	29	12	-	40	24	5	51	-	-	533	1978
1979	288	31	169	51	23	-	26	29	11	35	-	-	663	1979
1980	244	30	153	43	17	-	43	38	6	33	-	1	608	1980
1981	210	42	168	42	22	-	39	31	3	48	-	-	605	1981
1982	223	26	199	35	31	-	51	23	6	22	-	1	617	1982
1983	213	20	147	28	28	-	23	23	7	15	-	-	504	1983
1984	-	-	-	-	1	-	-	-	-	-	-	-	1	1984
Total	7241	1129	3774	1056	650	400	1082	398	249	1228	15	284	17506	Total

Source: Information Services, University Relations

**BOSTON COLLEGE FUND
1983-84**

Source	Goal	Gifts*
Alumni	\$3,500,000	\$3,330,715
Parents	400,000	733,908
Friends	400,000	287,265
Corporations	550,000	606,398
Matching Gifts	350,000	366,982
Foundations	500,000	613,276
Planned Giving	250,000	327,180
Associations	50,000	188,175
Total	<u>\$6,000,000</u>	<u>\$6,453,896</u>

*Gifts represent cash received as of 5/31/84.

Source: Office of Development

**INDIVIDUAL DONORS*
BY GIVING CLUB**

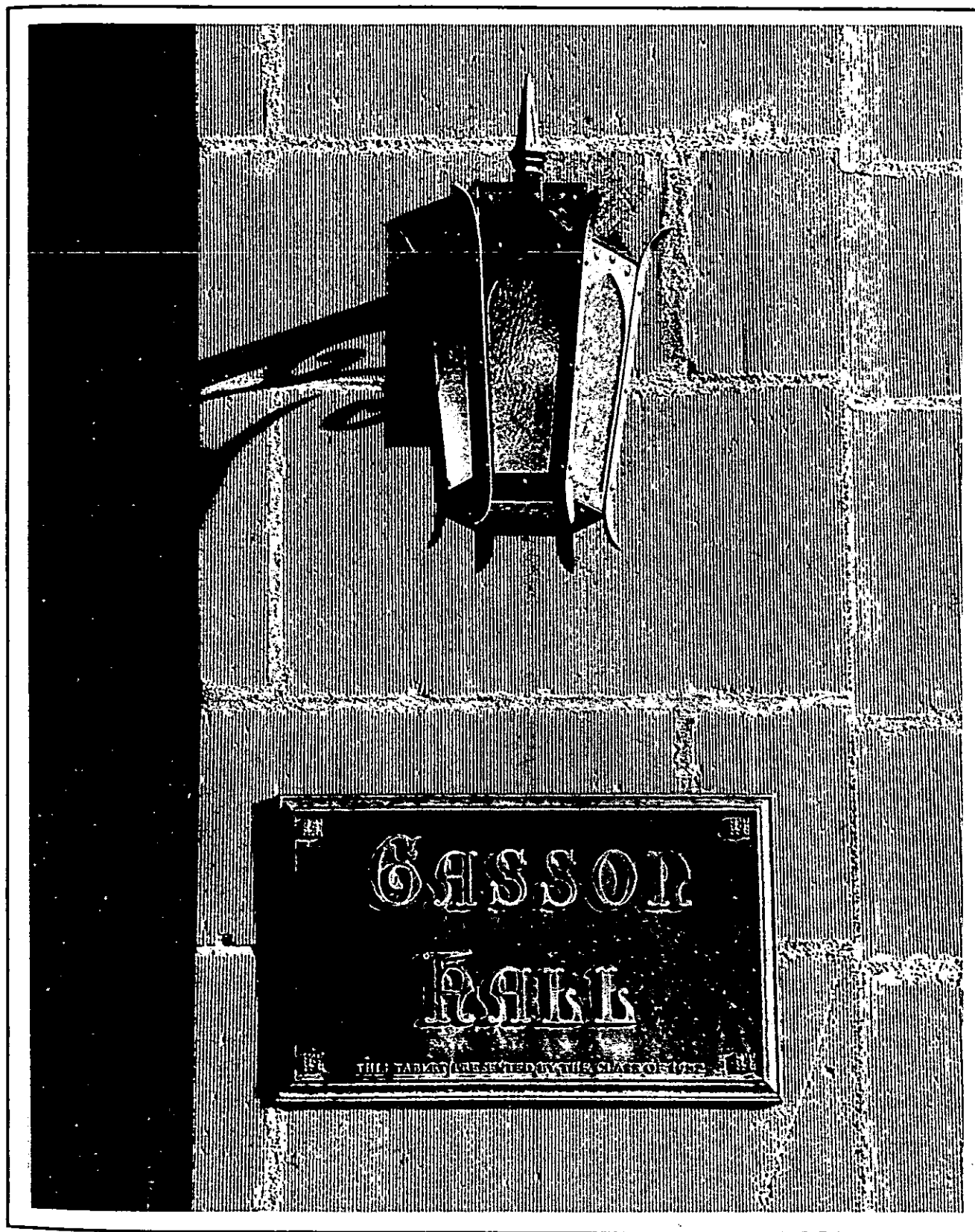
Giving Club	Level of Gift	1979-80	1980-81	1981-82	1982-83	1983-84
President's Circle	\$5,000 +	(Est. 1980-81)	91	126	135	167
FIDES	\$1,000-4,999	518	595	666	866	941
Tower Builders	\$500-999	202	253	330	359	415
John Bapst Associates	\$250-499	406	529	673	764	1,093
McElroy Associates	\$100-249	2,295	2,650	2,973	3,764	5,401
Other Annual Fund	\$1-99	10,239	11,032	12,326	14,953	12,294
Total Individual Donors		<u>13,660</u>	<u>15,150</u>	<u>17,094</u>	<u>20,841</u>	<u>20,311</u>

*Includes only alumni, parents and friends.

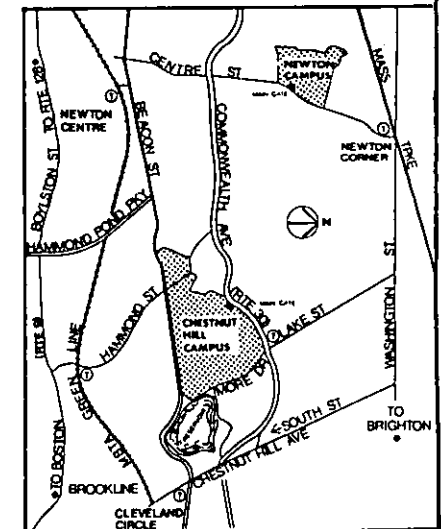
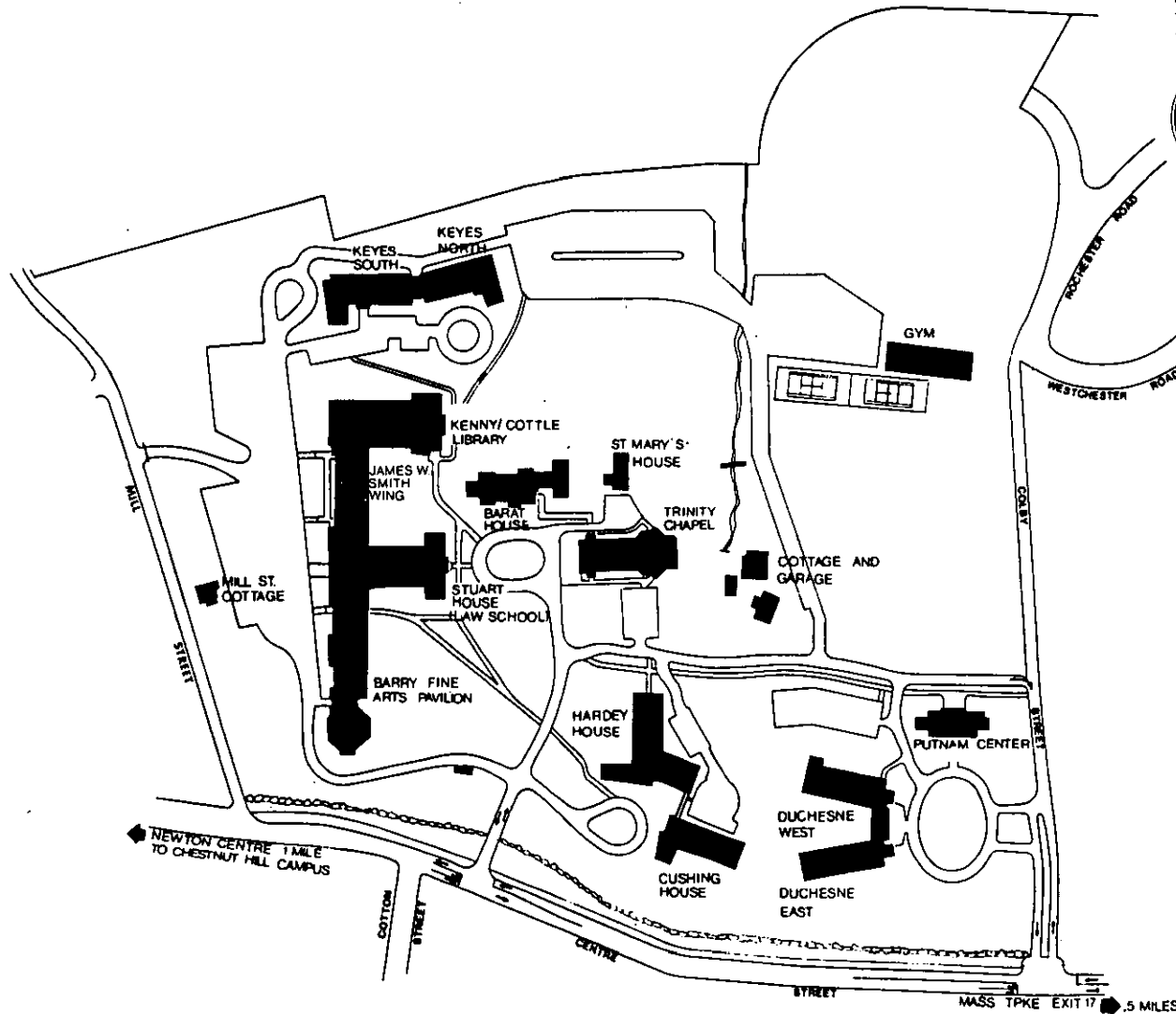
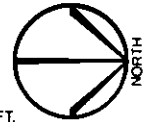
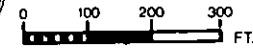
**Includes individual donors to the Thomas P. O'Neill, Jr. Endowed Chair in Political Science.

Source: Office of Development

PHYSICAL PLANT

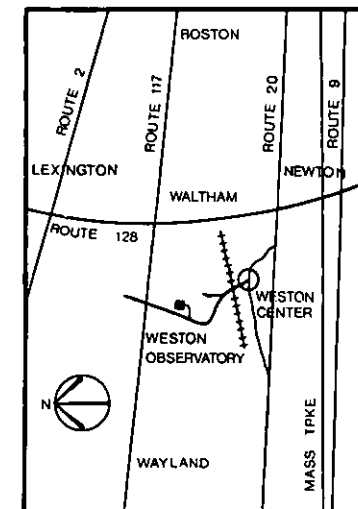
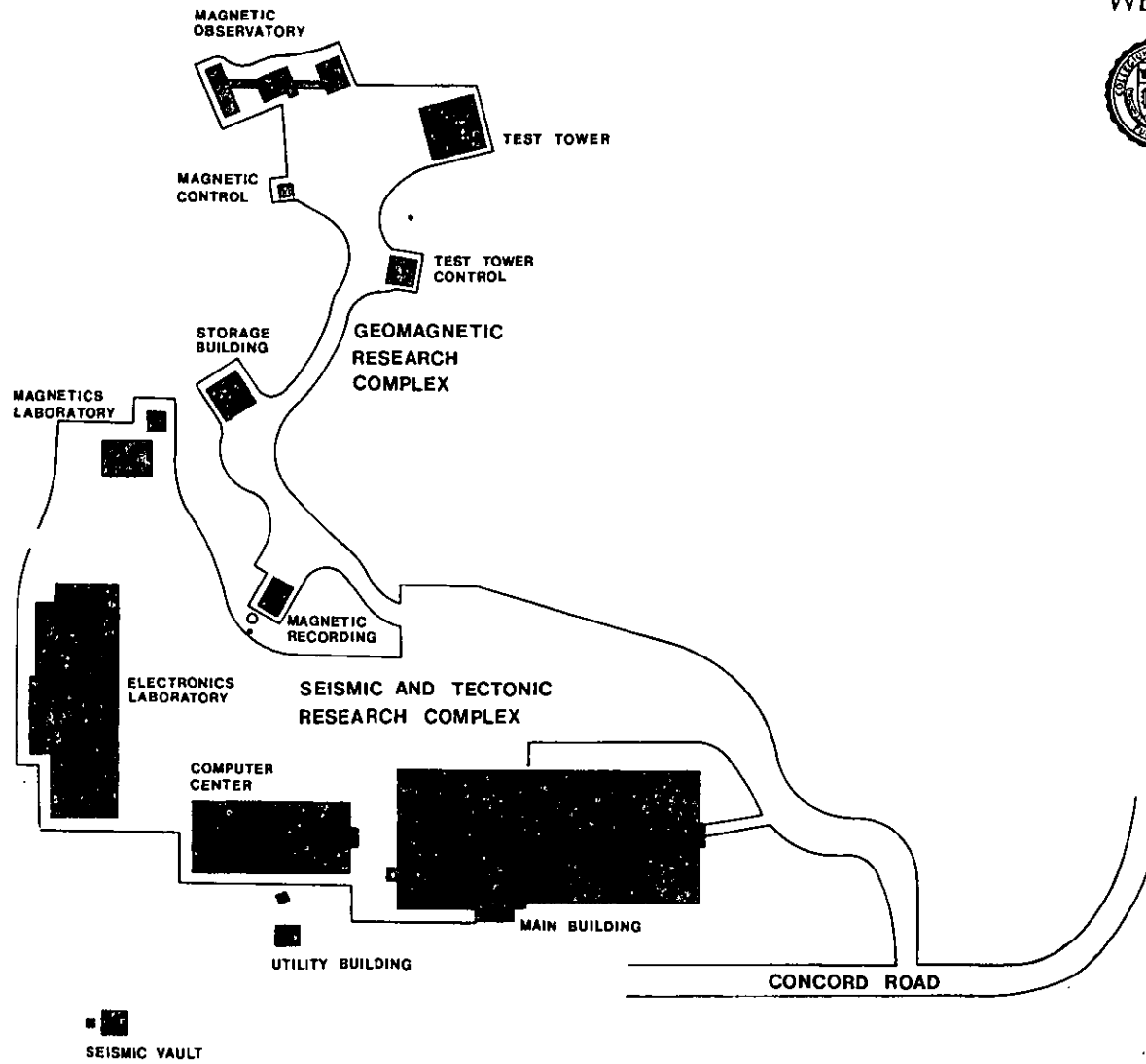
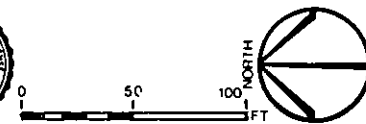


BOSTON COLLEGE NEWTON CAMPUS



September 1983

BOSTON COLLEGE WESTON OBSERVATORY



**BOSTON COLLEGE PROPERTIES
FALL 1984**

	Square Feet	Acres	Total Acres
UPPER CAMPUS			
Roncalli-Welch-Williams	137,446	3.1	
O'Connell and Upper Dorms	<u>472,838</u>	<u>10.9</u>	
Total Upper Campus	610,284		14.0
MIDDLE CAMPUS			
Area bounded by Beacon Street, Lower Campus Road, College Road, Commonwealth Avenue — including Hillside, Alumni, Philomatheia, Southwell			
	1,677,845	38.5	
18 Old Colony Road (Botolph)	17,346	0.4	
122 College Road (Lawrence)	9,579	0.2	
116 College Road (Hopkins)	7,349	0.2	
102 College Road (Faber)	7,191	0.2	
96 College Road (Rahner)	6,463	0.1	
90 College Road (Donaldson)	7,960	0.2	
78 College Road (Brock)	6,308	0.1	
72 College Road	7,100	0.2	
36 College Road (Bourneuf)	9,126	0.2	
176 Commonwealth (Bea)	<u>18,184</u>	<u>0.4</u>	
Total Middle Campus	1,774,451		40.7
LOWER CAMPUS			
Area bounded by Lower Campus Road, Beacon Street, and St. Thomas More Drive (excluding MDC property)			
	2,279,266	52.3	
2150 Commonwealth Avenue (St. Thomas More Hall)	<u>156,575</u>	<u>3.6</u>	
Total Lower Campus	2,435,841		<u>55.9</u>
Total Upper, Middle and Lower Campuses	4,820,576		110.6
NEWTON CAMPUS			
Total Chestnut Hill and Newton Campuses	<u>1,751,112</u>	<u>40.2</u>	150.8
OUTLYING PROPERTIES			
Newton			
262 Beacon Street (Daly)	19,793	0.45	
258 Hammond Street (Hovey)	178,390	4.1	
292 Hammond Street (Murray)	50,554	1.2	
300 Hammond Street (Connolly)	70,767	1.6	
314 Hammond Street (Haley)	55,710	1.3	
31 Lawrence Avenue	13,109	0.3	
67 Lee Road (Canisius)	10,436	0.2	
55 Lee Road	<u>16,032</u>	<u>0.37</u>	
	414,791		9.52
Boston			
2051 Commonwealth (Greycliff)	<u>4,623</u>	0.1	
	4,623		0.1
TOTAL PROPERTIES OWNED BY BOSTON COLLEGE	<u>6,991,102</u>		<u>160.42</u>

NOTE: The above statistics do not include rented properties used in University operations.

Source: Buildings and Grounds

**BUILDINGS RELATED TO BOSTON COLLEGE OPERATIONS
LOCATION AND PRIMARY USE
FALL 1984**

Name	Location	Primary Use	Date Constructed or Acquired
Alumni Hall	74 Commonwealth Ave.	Administrative	1948
Alumni Stadium	Lower Campus	Sports	1957
Bapst Library	Middle Campus	Library	1928
Barat House	885 Centre St.	Jesuit Res. & Admin.	1974
Barry Fine Arts Pavilion	885 Centre St.	Academic & Admin.	1974
Bea House ¹	176 Commonwealth Ave.	Jesuit Residence	1965
Botolph House	18 Old Colony Road	Administrative	1967
Bourneuf House	36 College Road	Administrative	1974
Brock House	78 College Road	Administrative	1972
Campion Hall ²	Middle Campus	Academic & Admin.	1955
Canisius House ¹	67 Lee Road	Jesuit Residence	1966
Carney Hall	Middle Campus	Academic & Admin.	1962
Cheverus Hall	127 Hammond St.	Student Residence	1960
Claver Hall	40 Tudor Road	Student Residence	1955
Connolly Faculty Center	300 Hammond St.	Academic	1975
Cottage and Garage	885 Centre St.	Residence	1974
Cushing Hall	Middle Campus	Academic & Admin.	1960
Cushing House	885 Centre St.	Student Residence	1974
Daly House ¹	262 Beacon St.	Jesuit Residence	1981
Devlin Hall	Middle Campus	Academic & Admin.	1924
Donaldson House	90 College Road	Administrative	1975
Duchesne East	885 Centre St.	Student Residence	1974
Duchesne West	885 Centre St.	Student Residence	1974
Edmond's Hall	200 St. Thomas More Dr.	Student Residence	1975
Faber House	102 College Road	Academic	1938
Fenwick Hall	46 Tudor Road	Student Residence	1960
Fitzpatrick Hall	137 Hammond St.	Student Residence	1960
William J. Flynn Student Recreation Complex	Lower Campus	Sports & Admin.	1972
Fulton Hall	Middle Campus	Academic & Admin.	1948
Gasson Hall	Middle Campus	Academic & Admin.	1913
Gonzaga Hall	149 Hammond St.	Student Residence	1958
Greycliff Hall	2051 Commonwealth Ave.	Student Residence	1969
Gym (Newton)	885 Centre St.	Gymnasium	1974
Haley House	314 Hammond St.	Residence	1969
Hancock House	223 Beacon St.	Residence	1907
Hardey House	885 Centre St.	Student Residence	1974
Higgins Hall	Middle Campus	Academic & Admin.	1966
Hillside A	100 Commonwealth Ave.	Student Residence	1973
Hillside B	100 Commonwealth Ave.	Student Residence	1973
Hillside C (Renamed Rubenstein Hall)			
Hillside D	90 Commonwealth Ave.	Student Residence	1973
Hopkins House	116 College Road	Administrative	1968
Hovey House	258 Hammond St.	Academic	1971
Kenny-Cottle Library	885 Centre St.	Library	1974
Keyes North	885 Centre St.	Student Residence	1974
Keyes South	885 Centre St.	Student Residence	1974
Kostka Hall	149 Hammond St.	Student Residence	1957
Lawrence House	122 College Rd.	Administrative	1968
Loyola Hall	42 Tudor Rd.	Student Residence	1955
Lyons Hall	Middle Campus	Academic & Admin.	1951

McElroy Commons ¹	Middle Campus	Students Services & Admin.	1960
McGuinn Hall	Middle Campus	Academic & Admin.	1968
McHugh Forum	Lower Campus	Ice Skating Rink	1958
Medeiros Townhouses	60 Tudor Road	Student Residence	1971
Mill Street Cottage	29 Mill Street	Residence	1974
Modular Apartments	Lower Campus	Student Residence	1970
Murray House	292 Hammond St.	Commuter Center	1967
O'Connell Hall	185 Hammond St.	Student Union	1938
Thomas P. O'Neill Library	Middle Campus	Central Research Library	1984
Parking Garage	2599 Beacon St.	General Use Parking Facility	1979
Philomatheia Hall	86 Commonwealth Ave.	Academic & Admin.	1920
Putnam Center	885 Centre St.	Academic	1974
Rahner House	96 College Rd.	Administrative	1952
Roberts Center	Middle Campus	Academic, Admin. & Gym	1958
Roncalli Hall	182 Hammond St.	Student Residence	1965
Rubenstein Hall	90 Commonwealth Ave.	Student Residence	1973
Service Building	Middle Campus	Admin. & Trade Shops	1948
Shaw House	377 Beacon St.	Student Residence	1962
Commander Shea Field	Lower Campus	Baseball Diamond	1960
Southwell Hall	38 Commonwealth Ave.	Administrative	1937
St. Mary's Hall ⁴	Middle Campus	Jesuity Residence	1917
St. Mary's House	885 Centre St.	Academic & Admin.	1974
St. Thomas More Hall	St. Thomas More Dr.	Administrative	1955
James W. Smith Wing	885 Centre Street	Academic & Admin.	1974
Stuart House (Law School)	885 Centre St.	Academic & Admin.	1974
Theater Arts Center	Lower Campus	Student Services & Academic	1981
Trinity Chapel (Newton)	885 Centre St.	Chapel	1974
Michael P. Walsh Hall	150 St. Thomas More Dr.	Student Res. & Dining Facility	1980
Welch Hall	200 Hammond St.	Student Residence	1965
Weston Observatory ⁵	Weston, MA	Research & Admin.	1948
Williams Hall	143 Hammond St.	Student Residence	1965
Xavier Hall	44 Tudor Rd.	Student Residence	1955
---	72 College Rd.	Administrative	1970
---	31 Lawrence Ave.	Academic	1979
---	55 Lee Road	Residence	1978

¹Rented to Jesuit Community of Boston College.

²Academic & Administrative = classrooms and offices.

³Student Services in McElroy Commons include bookstore, dining halls, mail room, U.S. Post Office.

⁴Owned by the Jesuit Community of Boston College.

⁵Land rented from the New England Province of the Society of Jesus. Building owned by Boston College.

Source: *Space Management*

SUMMARY OF BUILDING USE FALL 1984

Building Use	Number of Buildings
Student Residences ¹	23
Administrative	13
Academic and Administrative ²	20
Jesuit Residences	5
Miscellaneous Use ³	19
TOTAL	80

¹Keyes North and South = 1, Duchesne East and West = 1, Hillside A&B = 1, Hillside C&D = 1, Modulars = 1

²Academic and Administrative = offices and classrooms. Also includes Weston Observatory.

³Includes gymnasiums, libraries, student union, etc.

Source: *Space Management*

**CLASSROOMS
FALL 1984**

Building	Number of Classrooms	Stations
Barry	5	470
Campion	13	651
Carney	25	1,107
Cushing	11	818
Devlin	2	373
Fulton	13	944
Gasson	18	929
Higgins	8	657
Kenny-Cottle Library	1	125
Lyons	7	322
McGuinn	13	512
O'Neill Library	9	444
Stuart	7	525
Theater Arts Center	1	20
Total	133	7,897

Source: Space Management

**DINING FACILITIES
FALL 1984**

Name	Location	Capacity
Eagle's Nest Snack Bar	McElroy Commons	500
Faculty Dining Room	McElroy Commons	175
Lyons Cafeteria	Lyons Hall	550
McElroy Dining Hall	McElroy Commons	1,000
Newton Campus Cafeteria	Stuart House	360
Newton Campus Snack Bar	Stuart House	200
Trustees' Board Room	McElroy Commons	40
Walsh Hall Dining Facilities	Michael P. Walsh Hall	650
Total Capacity		3,475

Source: Dining Department

**OFFICES
FALL 1984**

CHESTNUT HILL		NEWTON CAMPUS	
Building	Number of Offices	Building	Number of Offices
Alumni Hall	8	Hopkins House	11
Botolph House	10	Lawrence House	11
Bourneuf House	9	Lyons Hall	99
Brock House	7	McElroy Commons	32
Campion Hall	56	McGuinn Hall	188
Carney Hall	230	O'Neill Library	45
Cushing Hall	67	Philomatheia Hall	7
Devlin Hall	40	Rahner	6
Donaldson House	7	Roberts Center	24
Fulton Hall	105	Rubenstein Hall	12
Gasson Hall	39	Service Building	17
Higgins Hall	54	Southwell Hall	26
Hillside B	3	St. Thomas More Hall	85
Hillside D	7	31 Lawrence Ave.	8
Hovey House	8	72 College Rd.	8
		Subtotal	1,229
		Barat House	3
		Barry Fine Arts Pavilion	25
		Kenny-Cottle Library	11
		James W. Smith Wing	21
		Stuart House	65
		St. Mary's House	3
		Subtotal	128
		Weston Observatory*	17
		Total Offices	1,374

*In addition to 17 offices, Weston Observatory houses 12 laboratories.

Source: Space Management

**FACILITY CAPACITIES
FALL 1984**

Facility	Location	Lecture Seating	Dinner Seating	Reception/ Standing
Athletic				
Alumni Stadium	Lower Campus			
Sporting Events		32,000	-	-
Field Seating		3,000	-	-
William J. Flynn Student Recreation Complex (New Wing)	Lower Campus	4,000	2,500	4,000
McHugh Forum	Lower Campus			
Sporting Events		3,800	-	-
Floor Seating		2,400	-	-
Roberts Center	Middle Campus			
Sporting Events		4,000	-	-
Floor Seating		800	550	-
Auditoriums				
Barry Fine Arts Pavilion 223	Newton Campus	330	-	-
Cushing Hall 001	Middle Campus	220	-	-
Devlin Hall 008	Middle Campus	322	-	-
Fulton Hall 412	Middle Campus	224	-	-
Gasson Hall 305	Middle Campus	104	-	-
Higgins Hall 304	Middle Campus	160	-	-
Higgins Hall 307	Middle Campus	160	-	-
McGuinn Hall 121	Middle Campus	266	-	-
Stuart Hall 411	Newton Campus	130	-	-
Stuart Hall 315	Newton Campus	178	-	-
Theater Arts Center	Lower Campus	600	-	-
Conference Rooms				
Murray Conference Room	McElroy Commons	100	-	-
Putnam Center (2 Conference Rooms)	Newton Campus	25/room	-	-
Roberts Lounge	St. Thomas More Hall	30	-	75
Trustees' Board Room	McElroy Commons	40	40	-
Dining Halls*				
Eagle's Nest	McElroy Commons	-	500	-
Faculty Dining Room	McElroy Commons	-	125	-
Lyons Cafeteria	Lyons Hall	-	500	-
McElroy Dining Hall	McElroy Commons	-	900	-
Newton Campus Cafeteria	Stuart House	-	250	-
Newton Campus Snack Bar	Stuart House	-	200	-
Walsh Hall Dining Facilities	Michael P. Walsh Hall	-	518	-
Dining Room		-	(360)	-
Golden Lantern		-	(108)	-
Function Rooms		-	(50)	-
Houses				
Alumni Hall	74 Commonwealth Avenue	-	80	125
O'Connell Hall	185 Hammond Street	-	-	200
Philomatheia Hall	86 Commonwealth Avenue	-	80	125
Lounges				
Cushing Faculty Lounge	Middle Campus	-	60	100
McElroy Student Lounge	McElroy Commons	-	-	100
McGuinn 3rd Floor Lounge	Middle Campus	-	50	75
McGuinn 5th Floor Lounge	Middle Campus	-	50	75
Multi-Purpose				
Campion Auditorium	Middle Campus	300	-	-
Gasson T-100	Middle Campus	300	200	400
Newton Chapel	Newton Campus	500	-	-

*Capacities shown for dining facilities are those used for function seating, and therefore differ from capacities for student dining.

Note: University facilities are available for function purposes through the Bureau of Conference and/or the primary user responsible for the facility.

All facilities are not available to all groups. The capacity figures are those used by the Bureau of Conferences in determining appropriate space needs for functions being scheduled.

Source: Bureau of Conferences

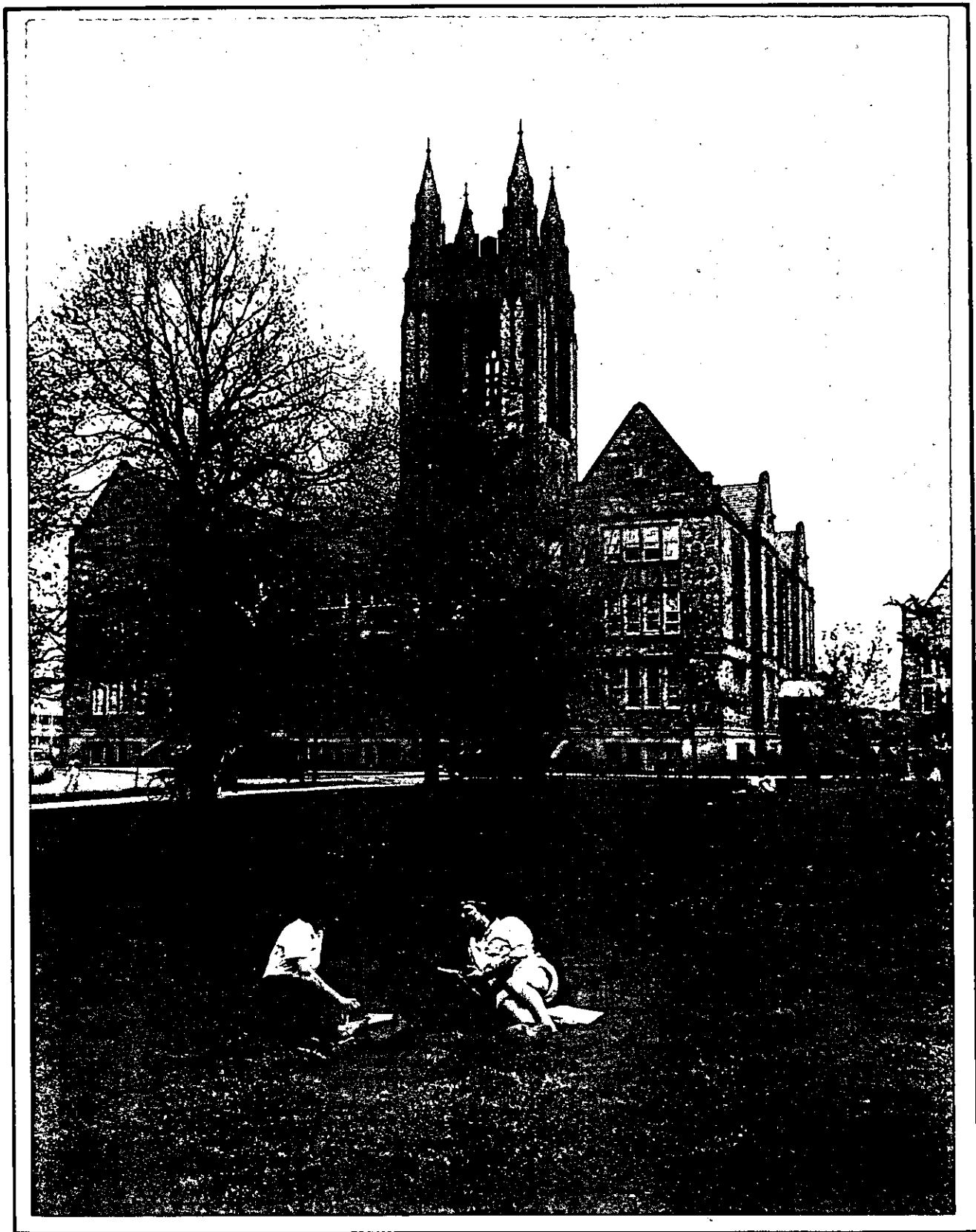
**RESIDENCE HALL CAPACITIES
1984-85**

		Living Units	Students	Staff*	Total
CHESTNUT HILL					
Upper Campus					
Cheverus	127 Hammond Street	68	132	3	135
Claver	40 Tudor Road	40	77	3	80
Fenwick	46 Tudor Road	74	142	3	145
Fitzpatrick	137 Hammond Street	73	141	3	144
Gonzaga	149 Hammond Street	80	152	3	155
Kostka	149 Hammond Street	81	159	3	162
Loyola	42 Tudor Road	52	101	2	103
Medeiros Townhouses	60 Tudor Road	51	98	2	100
Roncalli	182 Hammond Street	69	132	3	135
Shaw	377 Beacon Street	8	22	1	23
Welch	200 Hammond Street	76	154	3	157
Williams	142 Hammond Street	72	141	3	144
Xavier	44 Tudor Road	40	79	2	81
		<u>784</u>	<u>1,530</u>	<u>34</u>	<u>1,564</u>
Lower Campus					
Edmond's Hall	200 St. Thomas More Drive	206	792	8	800
Hillside A	100 Commonwealth Avenue	36	210	3	213
Hillside B	100 Commonwealth Avenue	29	152	2	154
Hillside D	90 Commonwealth Avenue	24	188	2	190
Modulars	St. Thomas More Drive	86	498	9	507
Michael P. Walsh Hall	150 St. Thomas More Drive	144	783	18	801
Rubenstein Hall	90 Commonwealth Avenue	42	174	3	177
		<u>567</u>	<u>2,797</u>	<u>45</u>	<u>2,842</u>
NEWTON CAMPUS					
Cushing	885 Centre Street	64	120	3	124
Duchesne East	885 Centre Street	64	132	3	135
Duchesne West	885 Centre Street	72	131	2	134
Hardey	885 Centre Street	96	178	3	181
Keyes North	885 Centre Street	74	143	5	148
Keyes South	885 Centre Street	57	105	3	108
		<u>427</u>	<u>809</u>	<u>19</u>	<u>830</u>
OFF CAMPUS					
Greycliff	2051 Commonwealth Avenue	25	39	2	41
Total		<u>1,803</u>	<u>5,175</u>	<u>100*</u>	<u>5,277</u>

*Area Directors not included.

Source: Housing Office

FINANCE



**HIGHLIGHTS OF FINANCIAL OPERATIONS
FOR THE FIVE YEARS ENDED
(DOLLARS IN MILLIONS)**

	1980	1981	1982	1983	1984
Revenues					
Tuition and Fees	\$46.2	\$53.6	\$60.2	\$ 69.4	\$79.4
Contracts and Grants	13.8	14.2	13.8	12.6	11.8
Organized Activities	1.7	2.3	2.7	4.0	6.6
Gifts, Investments and Other*	5.1	10.4	12.5	13.2	13.4
Auxiliary Enterprises	13.2	16.7	18.5	20.4	22.0
Total Revenue	80.0	97.2	107.7	119.6	133.2
Expenditures and Transfers					
Instruction	27.9	30.7	35.3	39.3	42.0
Libraries	2.8	3.4	3.9	4.4	4.7
Sponsored Research	4.1	4.3	4.8	3.8	3.5
Student Services	3.2	3.6	4.2	4.8	4.7
Organized Activities	2.5	2.9	3.4	4.0	4.5
Plant Maintenance	6.1	7.5	8.2	8.8	9.3
General Administration	6.7	8.1	9.6	11.2	12.5
Student Aid/Loans	9.4	11.1	11.1	12.8	15.0
Auxiliary Enterprises	13.4	16.4	17.9	19.0	19.6
Other Transfers (Net)*	3.6	9.1	9.1	11.3	17.2
Total Expenditures and Transfers	\$79.7	\$97.1	\$107.5	\$119.4	\$133.0

*Gifts and Other Transfers include gifts restricted to Endowments and Plant Funds.

Source: Office of the Controller

**BOSTON COLLEGE
TUITION RESTATED IN 1967 DOLLARS**

Academic Year	Consumer Price Index*	Tuition in Absolute Dollars	Tuition in 1967 Dollars
1975/76	166.3	2,950	1,774
1976/77	174.3	3,175	1,822
1977/78	186.1	3,420	1,838
1978/79	202.9	3,645	1,796
1979/80	229.9	3,980	1,731
1980/81	258.4	4,530	1,753
1981/82	281.5	5,180	1,840
1982/83	292.4	6,000	2,052
1983/84	303.5	6,800	2,240
1984/85	317.0**	7,475	2,358**

*CPI measured at December 31st of academic year. Source: Department of Commerce Economic Indicators, July 1984.

**Estimate

Source: Office of the Controller

**TUITION AND FEES
FOR THE TEN YEARS ENDING MAY 31, 1985**

	1976	1977	1978	1979	1980	1981	1982	1983	1984	1985
Undergraduate Schools										
Arts & Sciences, Education, Management, Nursing	\$2,950	\$3,175	\$3,420	\$3,645	\$3,980	\$4,530	\$5,180	\$6,000	\$6,800	\$7,475
Evening College (per course)	200	210	220	230	240	250	275	305	335	355
Summer Session (per credit hour)	70	75	75	80	88	96	106	120	134	143
Graduate Schools										
Arts & Sciences (per credit hour)	95	100	105	113	130	150	170	194	218	238
Law School	2,950	3,200	3,500	3,810	4,200	4,900	5,625	6,575	7,450	8,200
Management (per credit hour)	80	86	100	113	130	150	180	210	240	265
Social Work	2,900	3,125	3,380	3,645	3,980	4,600	5,260	5,900	6,540	7,135
MSW part-time (per credit hour)	-	-	-	-	110	130	150	170	185	200
DSW part-time (per credit hour)	-	-	-	-	130	150	170	190	210	228
Room Charge Per Student										
Upper Campus, South Street*	750	775	850	950	1,050	1,190	1,350	1,510	1,645	1,775
Modulars	900	950	1,050	1,150	1,250	1,450	1,640	1,850	2,015	2,180
Hillside-3 bedroom	950	975	1,050	1,150	1,250	1,450	1,640	1,840	2,005	2,160
Hillside-2 bedroom	1,000	1,025	1,100	1,200	1,300	1,490	1,680	1,880	2,050	2,200
Edmond's Hall (Reservoir)	1,000	1,025	1,100	1,200	1,300	1,490	1,680	1,880	2,050	2,200
Newton	750	775	850	950	1,050	1,190	1,350	1,510	1,645	1,775
Kilsyth	850	-	-	-	-	-	-	-	-	-
Cleveland Circle	750	775	-	-	-	-	-	-	-	-
Pine Manor, St. Gabriel's	-	-	-	950	1,050	-	-	-	-	-
Walsh Hall	-	-	-	-	-	1,330	1,500	1,680	1,830	1,960
Board Per Student	700	750	825	875	1,025	1,236	1,434	1,600	1,725	1,840
Representative Fees										
Laboratory (Science)	100	100	100	100	100	120	130	144	154	220
Undergraduate Government	20	24	24	24	24	24	30	30	32	32
Graduate Student Association	5	5	5	5	5	7	7	7	10	10
Health	60	70	70	70	80	91	97	112	120	130
Recreation	25	32	32	32	35	45	52	60	65	65

*South Street properties sold in 1981.

Source: Office of the Controller

**SELECTED CONTRACT AND GRANT AWARDS*
1983-84**

Title	Source of Funding	Amount
CHEMISTRY DEPARTMENT		
Exoergic Gas Phase Reactions of Boron Atoms	National Science Foundation	\$ 76,218
The Molecular Basis of Cellular Control Mechanism	National Institutes of Health	112,464
Heterocyclic Synthesis — Rubrolone and Other Pyradines	National Institutes of Health	180,117
Synthesis of the Anticancer Drug Andrimycin	National Institutes of Health	114,969
GEOLOGY & GEOPHYSICS DEPARTMENT		
Igneous Rocks of Eastern Mass: Petrogenesis & Tectonic Significance	National Science Foundation	62,500
Ground Motion Environmental Analysis	U.S. Air Force	250,000
The Study of Seismicity and Tectonics in New England	Nuclear Regulatory Commission	172,000
PHYSICS DEPARTMENT		
Large Spacecraft in the Magnetospheric Environment	U.S. Air Force	435,793
South Pole Optical Observations	National Science Foundation	115,409
Time Scale Variations of Solar — Terrestrial Phenonomia	National Science Foundation	164,700
Interaction of Neutral Particle Beams	U.S. Air Force	60,000
PSYCHOLOGY DEPARTMENT		
Sonar Sensory Aid and Blind Children's Spatial Cognition	National Institutes of Health	87,750
SOCIOLOGY DEPARTMENT		
Worker Education for the 1980's	U.S. Dept. of Education	82,881
SPACE DATA ANALYSIS LAB		
Spacecraft Environmental Data	U.S. Air Force	600,000
SCHOOL OF EDUCATION, Div. of Special Ed.		
Rehabilitation Teacher Training	U.S. Dept. of Education	69,651
SCHOOL OF EDUCATION, Testing		
Boston Public Schools — Promotions Policy	City of Boston	206,812
SCHOOL OF MANAGEMENT		
Small Business Development Center	Small Business Administration Univ. of Massachusetts	193,704
SCHOOL OF NURSING		
Professional Nurse Trainee Program	Dept. of Health & Human Services	100,659
OTHER		
Special Services Program — "Learning to Learn"	U.S. Dept. of Education	102,643

*Selected awards are greater than \$50,000.
Source: Office of Research Administration

**SUMMARY OF CONTRACT AND GRANT AWARDS
JULY 1, 1983 — MAY 31, 1984**

	No. of Awards	Award Total
Biology	3	\$ 57,138
Chemistry	14	947,884
Geology & Geophysics		
Weston Observatory	7	585,775
Chestnut Hill	4	104,758
Physics	12	996,237
Political Science	1	50,460
Psychology	1	87,750
Romance Languages	2	58,732
Social Welfare Research Inst.	3	484,550
Sociology	3	141,509
Space Data Analysis Lab	4	1,119,950
School of Education		
Special Education	4	340,920
Campus School	4	512,393
Center for Testing	4	488,248
Other	5	108,606
Law School	3	64,963
School of Management	2	197,704
School of Nursing	2	197,014
School of Social Work	2	55,371
Other	4	188,276
TOTAL	84	\$6,788,238

Source: Office of Research Administration

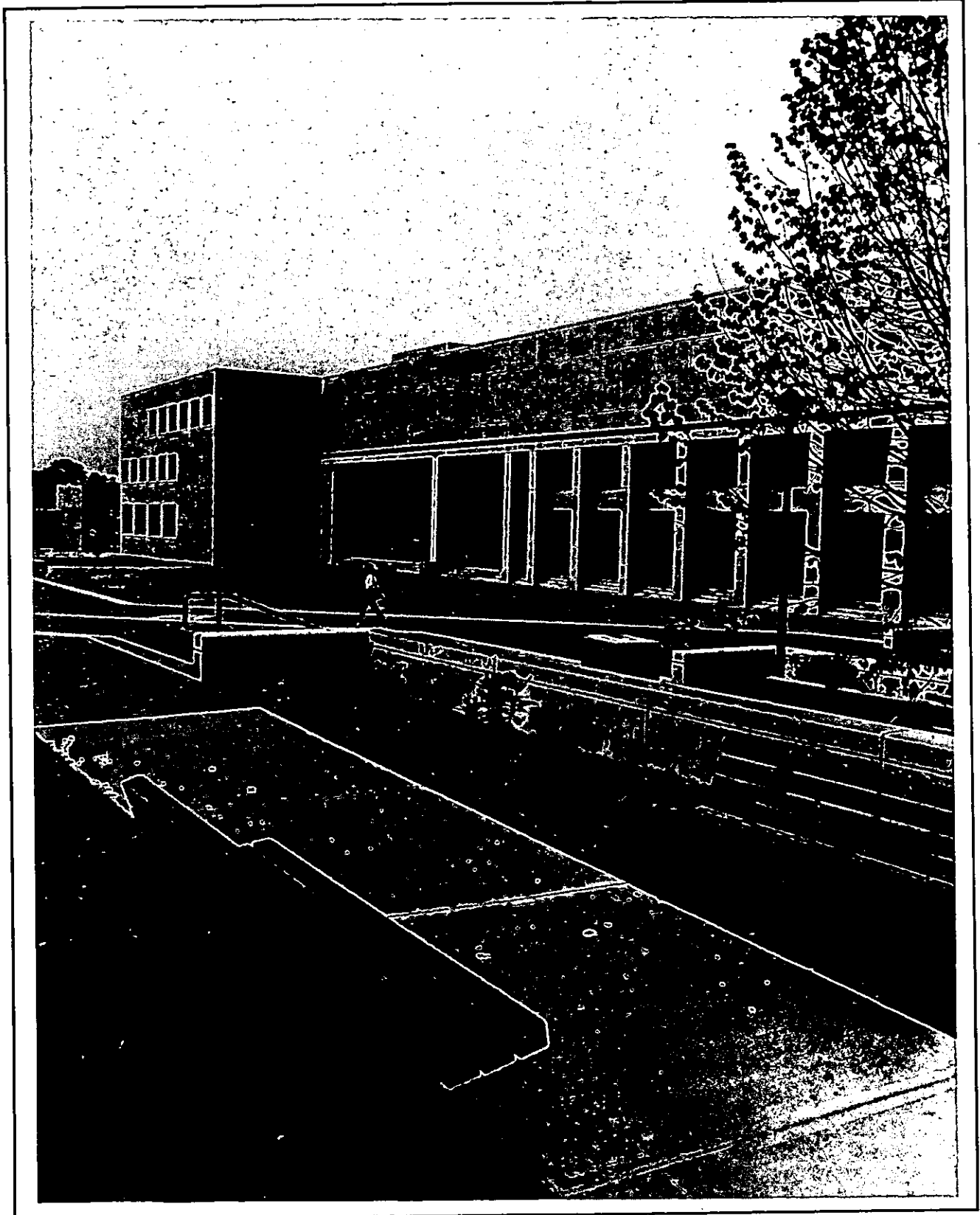
**CONTRACTS AND GRANTS*
SOURCE AND APPLICATION OF FUNDING
(THOUSANDS OF DOLLARS)**

SOURCE	1980	1981	1982	1983	1984
Government					
Federal	\$11,958	\$12,662	\$12,225	\$10,680	\$ 9,440
State	706	785	747	661	946
Local	595	217	162	616	870
Non-Government	475	534	702	669	557
Total	<u>\$13,734</u>	<u>\$14,198</u>	<u>\$13,836</u>	<u>\$12,626</u>	<u>\$11,813</u>
APPLICATION					
Sponsored Research	5,329	5,700	6,241	5,222	4,734
Other Sponsored Programs	3,124	3,169	3,210	2,522	2,192
Student Aid	5,281	5,329	4,385	4,882	4,887
Total	<u>\$13,734</u>	<u>\$14,198</u>	<u>\$13,836</u>	<u>\$12,626</u>	<u>\$11,813</u>

*The amounts represent actual accounted expenditures for the referenced fiscal year. They are not reflective of awards made to the University for that year.

Source: Office of the Controller

LIBRARIES



BOSTON COLLEGE LIBRARIES

O'Neill Library	Central Library, Middle Campus
Geophysics Library	Weston Observatory Weston, MA
Law Library	Kenny-Cottle Library Newton Campus
Newton Study Center (Undergraduate)	Kenny-Cottle Library Newton Campus
School of Social Work Library	McGuinn Hall, Basement
Rare Books and Special Collections	More Hall, Rooms 215-216

Source: University Librarian

EXPENDITURES FOR LIBRARY MATERIALS

Library	1979-80	1980-81	1981-82	1982-83	1983-84
Bapst & Newton Study Center	\$444,193	\$555,014	\$ 589,787*	\$ 670,793	\$ 799,781
Law	143,384	229,594	261,680	294,722	345,095
Management	96,104	99,109	109,589	114,146	96,943
Nursing	39,191	48,210	52,079	59,187	72,707
Science	147,344	190,809	207,178*	230,317	242,358
Social Work	14,602	18,777	19,955	28,035	24,035
Total	<u>\$884,728</u>	<u>\$1,141,840</u>	<u>\$1,240,268</u>	<u>\$1,397,200</u>	<u>\$1,580,919</u>

*Restated to reflect actual expenditures for Science Library made through Bapst.

Source: Office of the Controller

HOLDINGS BY INDIVIDUAL LIBRARIES — 1984*

Library	Volumes	Periodical Subscriptions	Microform Units
Bapst & Newton Study Center	548,964	3,570	561,069
Law	142,941	803	381,144
School of Management	69,111	856	34,825
School of Nursing	38,468	602	44,316
Science	58,112	included w/ Bapst	51,025
Weston	8,578	29	404
Social Work	28,748	386	2,956
Special Collections	48,717	-	-
Total	<u>943,639</u>	<u>6,246</u>	<u>1,075,739</u>

*Eleven-month period.

Source: University Librarian

CIRCULATION STATISTICS

Year	Student	Faculty	Interlibrary Loans	Reserve	Total
1979-80	96,876	13,333	7,901	152,369	270,479
1980-81	94,584	12,762	5,463	170,123	282,932
1981-82	106,670	14,335	7,005	178,615	306,625
1982-83	98,466	15,235	7,006	161,107	281,814
1983-84*	93,180	11,630	6,973	158,208	269,991

*Eleven-month period.

Source: University Librarian

SPECIAL LIBRARY SERVICES

COMPUTER SEARCH SERVICE

The Boston College library system has access to more than 300 computerized databases. In 1974 the Nursing Library became the first in the United States to receive a contract from the National Library of Medicine for the MEDLINE database. Since then the Boston College libraries have added databases for the humanities, social sciences, education, medicine and health sciences; business and economics; pure and applied sciences; and engineering. There are also many multidisciplinary databases as well as databases which cover specific types of publications (e.g., dissertations, government documents, patents).

The Law School Library has access to the LEXIS and WESTLAW databases, as well as NEXIS and DIALOG. Access to some of these may be limited by contract to members of the Law School community.

Contact the appropriate reference librarian or service desk for more information.

AUTOMATED SERVICES

The Boston College libraries have an automated catalog providing access to almost half-million bibliographical records. The catalog can be searched by author, title, subject, call-number or keywords in subject headings and titles.

INTERLIBRARY LOAN

The Interlibrary Loan Service is offered to students, faculty, administration and staff to facilitate obtaining materials not available in the Boston College Libraries. Books, photocopies of journal articles, microfilm, theses, and government documents may be borrowed from other libraries. Except for unusual items, the waiting period is from one to four weeks; for anyone willing to use the material at the holding library, a computerized system will provide locations within twenty-four hours of the request. Request forms and further information are available from the reference staff in each library.

BOSTON LIBRARY CONSORTIUM

The library is a member of the Boston Library Consortium, a group of area libraries which includes Brandeis, Boston University, Tufts, Wellesley, Northeastern, MIT, Massachusetts State Library, Boston Public Library, and University of Massachusetts. Faculty and graduate students may apply for a Consortium borrowers card at the reference department in O'Neill. The Consortium maintains a central office at the Boston Public Library. Further information may be found in the User Guide and the Consortium Handbook, available in all libraries.

UNITED STATES GOVERNMENT PUBLICATION

In 1963 Boston College was designated one of the two depository libraries in this congressional district. This status entitles Boston College Libraries to receive on a selective basis United States government publications at no cost with the stipulation they be made available to the general public. Most of the material circulates in the same manner as books. Inquiries related to the retrieval and use of government documents should be directed to the Government Documents Department at O'Neill Library.

NEW ENGLAND LIBRARY INFORMATION NETWORK

Through membership in the New England Library Information Network (NELINET), there is on-line access to publishing, cataloging, and inter-library loan location information from the data bank of OCLC, Inc. which contains over 10 million records from the Library of Congress and some 2,900 other contributing institutions in North America.

Source: University Librarian

SPECIAL COLLECTIONS

Rare and valuable books; manuscripts and archives form Special Collections. Access is controlled because of their scarcity, value or fragile nature. Outstanding collections are listed below. Contact Special Collections 552-3282 for further information.

HILAIRE BELLOC COLLECTION AND ARCHIVES, 1870-1953

The world's most complete assemblage of materials dealing with this controversial British Catholic "publicist." Includes his personal library, all published works, most of his correspondence and manuscripts.

LITURGY AND LIFE, 1925-1975

Formed by William J. Leonard, S.J., this ever-growing collection of books, ephemera, and the personal papers of the twentieth century pioneer liturgists documents the life of the Church in America in the pre-Vatican II era. Highlights include books on pastoral and devotional literature and liturgical theory and commentary, and thousands of devotional items.

CITYWIDE COORDINATING COUNCIL ARCHIVES, 1975-1978

Complete records of the council formed to desegregate the Boston school system as ordered by Judge Arthur Garrity.

ROBERT F. DRINAN, S.J. PAPERS, 1970-

Covers his congressional term as representative for the Fourth Massachusetts Congressional District, 1970-1980 and his continuing work for the Americans for Democratic Action, 1980-.

IRISH COLLECTION

Formed by Helen Landreth, the eminent scholar of Robert Emmet and the Irish Rebellion, the collection richly represents the periods 1790-1810 and 1850-1885. Included also are samplings of the Irish literary renaissance poets and playwrights, and writers and private presses of Ireland today.

JESUITANA COLLECTION, 1543-1773

Includes rare works dealing with missionary letters written from the Far East in the sixteenth and seventeenth centuries, works of science, on Biblical exegesis and on classical scholarship. An original holograph letter from St. Francis Xavier to John III, King of Portugal, dated 31 January 1552 crowns this exceptional body of unusual works.

REX STOUT COLLECTION AND ARCHIVES, 1886-1975

Famed creator of the Nero Wolfe mysteries, Stout is here represented by the best collection in existence of his personal manuscripts, correspondence, editions and secondary sources, together with his own library.

FRANCIS THOMPSON COLLECTION, 1859-1907

The most complete body of original material by Francis Thompson, one of the foremost poets of the British Catholic literary renaissance. Includes autograph manuscripts, 1500 frames of microfilm of hitherto unknown manuscripts, and first editions. There is also material by and about Coventry Patmore.

MEYNELL FAMILY COLLECTION

The Meynell Family Collection is both an adjunct to the Francis Thompson Collection and important in its own right. Includes correspondence, first editions and works about the poet Alice Meynell, her publisher husband Wilfred, and their children Francis, the proprietor of the Nonesuch Press, and Viola.

NICHOLAS M. WILLIAMS COLLECTION

A collection assembled by Joseph Williams, S.J. in honor of his father, the emphasis on Jamaica and its black culture is supplemented by West African roots and South American parallelisms. Includes the Anansi Folktale Archives.

RITA KELLEHER COLLECTION

In recognition of her twenty-five years of service to the School of Nursing, including twenty years as Dean, this collection contains archival, historical, research, and other significant materials in nursing.

Other collections include:

MAURICE BARING COLLECTION, 1874-1945
BOOKBUILDERS OF BOSTON ARCHIVES, 1938-present
BURNS, OATES AND WASHBOURNE COLLECTION, 1847-1954
GILBERT KEITH CHESTERTON COLLECTION, 1874-1936
ANNIE CHRISTITCH (CHRISTIC) PAPERS, 1885-1977
CHARLOTTE LOUISA HAWKINS DEMPSTER COLLECTION, 1835-1913
ELEANOR EARLY PAPERS, 1895-1969
EIRE SOCIETY OF BOSTON ARCHIVES
FATHERLESS CHILDREN OF FRANCE MEMORIAL VOLUME RECORDS, 1915-1921
ERIC GILL COLLECTION
DAVID GOLDSTEIN PAPERS, 1870-1958
GRAHAM GREENE COLLECTION, 1904-
PETER LEVI COLLECTION AND PAPERS, 1931-
JOSEPH McCARTHY PAPERS, 1915-1980
THOMAS MERTON COLLECTION, 1915-1968
MORRISSEY COLLECTION OF JAPANESE PRINTS, 18th-19th centuries
MUSIC MANUSCRIPTS OF AMERICAN POPULAR SONGS, 1900-1940
NONESUCH PRESS COLLECTION
JAMES SPENCER NORTHCOTE COLLECTION, 1821-1907
BRUCE ROGERS COLLECTION
SALEM, MASS., FIRST CHURCH OF CHRIST LIBRARY, (Including the library of
John Prince, 1751-1836)
JOSEPH COOLIDGE SHAW COLLECTION, 1821-1851
EDITH SITWELL COLLECTION, 1887-1964
McNIFF COLLECTION OF THE STANBROOK ABBEY PRESS
PLAYBILL COLLECTION
GEORGE FRANCIS TRENHOLM PAPERS, 1886-1958
EVELYN WAUGH COLLECTION, 1903-1966

SPECIAL NURSING COLLECTIONS, O'Neill Library

THE BOSTON COLLEGE GUILD OF ST. LUKE OF BOSTON HEALTH ETHICS COLLECTION

Initiated in 1974, this contains books, pamphlets, periodicals, reprints, and audio-visual materials which concern the ethics of medicine and health care.

NATIONAL HEALTH PLANNING INFORMATION CENTER

O'Neill Library is one of the twenty-six United States and European depositories for NHPIC non-copyrighted materials in microfiche format. These cover a variety of topics relevant to health planning and resources with a strong nursing component. Consult reference librarians for additional information in regard to the scope and use of this collection.

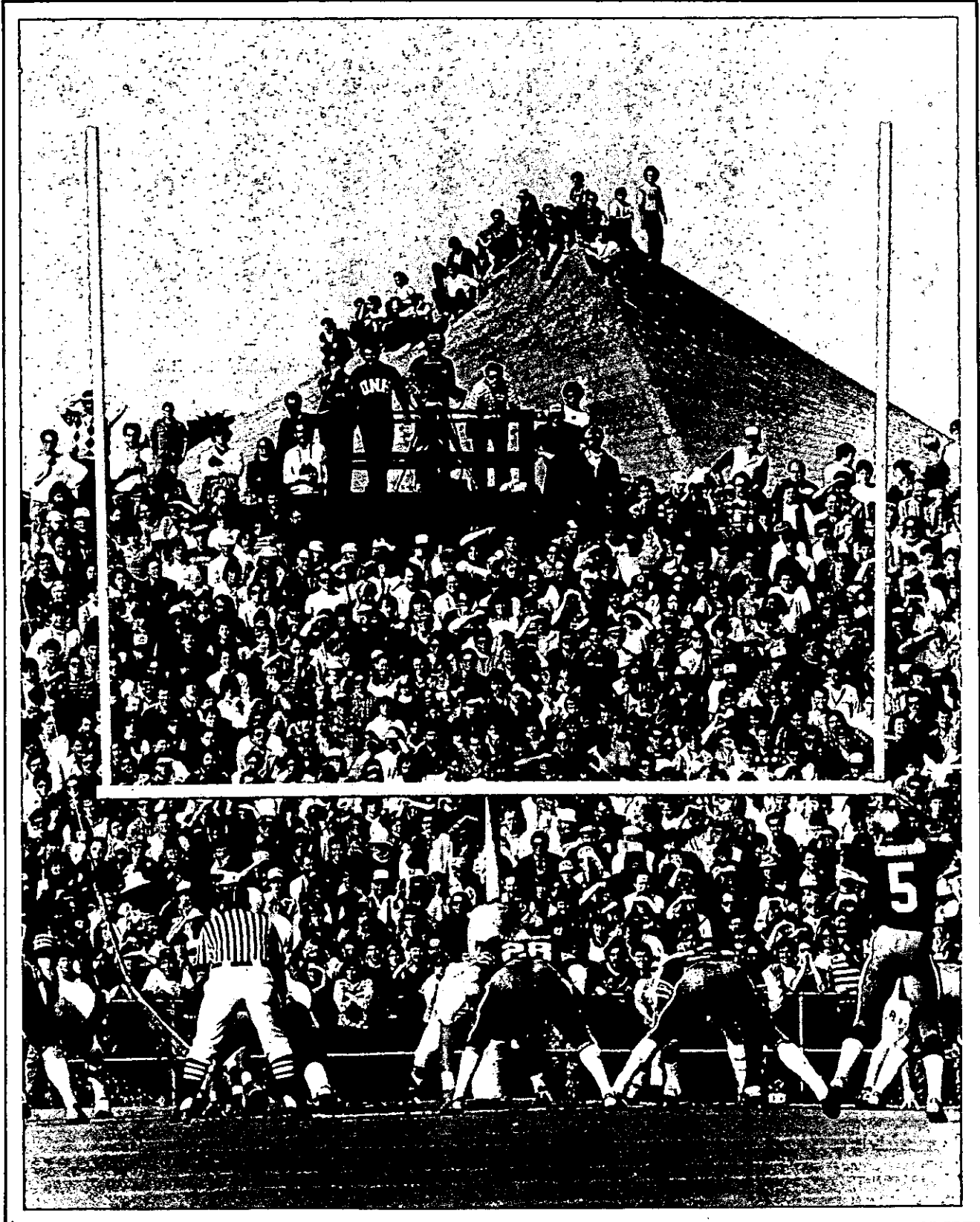
Source: *University Librarian*

BOSTON COLLEGE ARCHIVES

Archives are the official non-current papers and records of an institution that are deemed worthy of permanent preservation for their legal, fiscal or historical values. The Boston College Archives contain the office records and documents of the various University offices, academic and otherwise, copies of all University publications, including student publications, movie footage of Boston College football, some audio-visual materials, and a tape recording of the University Lecture Series. A significant collection of photographs documents the pictorial history of Boston College. Alumni, faculty, and Jesuit records are also preserved. A museum houses various ephemera and memorabilia that accompany the documents. In addition, the Archives are the repository for the documents of Newton College of the Sacred Heart (1946-1975); The Jesuit Education Association (1934-1970); the Catholic International Education Office (1952-1976); and the documents of the Jesuit Community at Boston College (1863-).

Source: *University Archivist*

ATHLETICS



**VARSITY SPORTS
1983-84**

Men's Varsity	Participants	Women's Varsity	Participants
Baseball	24	-	-
Basketball	15	Basketball	11
Cross-Country	36	Cross-Country	24
-	-	Fencing	8
-	-	Field Hockey	17
Football	95	-	-
Golf	20	Golf	8
Ice Hockey	25	-	-
Lacrosse	38	Lacrosse	21
Sailing	12	Sailing	10
Skiing	14	Skiing	10
Soccer	23	Soccer	21
-	-	Softball	15
Swimming	20	Swimming & Diving	28
Tennis	8	Tennis	10
Track-Indoor	46	Track-Indoor	32
Track-Outdoor	46	Track-Outdoor	32
-	-	Volleyball	16
Wrestling	14	-	-
Total	436	Total	263

Source: Sports Information Office

**CLUB SPORTS
1983-84**

Men's Club	Participants	Women's Club	Participants
Rugby	24	Ice Hockey	17
Volleyball	12	Waterpolo	23
Waterpolo	21		
Coed Club Sports			
Judo			
Karate			
Volleyball			

Source: Sports Information Office

VARSITY SPORTS RECORDS

	1979-80	1980-81	1981-82	1982-83	1983-84
	W-L-T	W-L-T	W-L-T	W-L-T	W-L-T
Men's Records					
Football	5-6	7-4	5-6	8-2-1	9-2
Basketball	19-10	23-7	22-10	25-7	18-12
Ice Hockey	25-7-1	20-8-3	19-11	15-13-2	26-13
Wrestling	7-7	5-13	9-7	9-6	9-6
Soccer	9-6-5	15-3-3	13-7-1	14-3-5	9-9-2
Lacrosse	7-7	9-6	5-9	6-10	6-8
Tennis	9-4	11-1	7-7	17-3	13-2
Baseball	8-15	11-12	13-12	11-9	7-17
Swimming	5-6	7-1	3-5	6-3	7-2
Golf	8-7	2-6	8-6	12-6	9-8
Women's Records					
Basketball	11-12	12-11	10-15	17-9	11-16
Field Hockey	4-12-2	5-10-2	6-9-1	5-10-1	9-8-2
Swimming	5-5	6-2	7-3	7-2	7-2
Tennis	4-8	4-3	3-3	10-4	12-3
Volleyball	5-11	8-15	13-22	12-18	7-20
Lacrosse	9-3	8-5	5-5-2	5-8-1	7-8
Soccer	-	10-4	8-4-1	10-2	15-5
Softball	-	-	-	-	5-6

Source: Sports Information Office

VARSITY FOOTBALL SCHEDULES

1984		
Sept.	1	Western Carolina
Sept.	8	at Alabama
Sept.	22	North Carolina
Oct.	13	Temple
Oct.	20	at West Virginia
Oct.	27	Rutgers
Nov.	3	at Penn State
Nov.	10	Army
Nov.	17	Syracuse
Nov.	23	at Miami (Fla)
Dec.	1	at Holy Cross

1985		
Sept.	7	Temple
Sept.	14	Maryland
Sept.	21	at Pittsburgh
Sept.	28	Miami (Fla.)
Oct.	5	— Open —
Oct.	12	at Army
Oct.	19	West Virginia
Oct.	26	at Rutgers
Nov.	2	at Penn State
Nov.	16	at Syracuse
Nov.	23	Holy Cross

1986		
Sept.	6	Rutgers
Sept.	13	California
Sept.	20	Penn State
Oct.	4	— Open —
Oct.	11	at Maryland
Oct.	18	— Open —
Oct.	25	at West Virginia
Nov.	1	at Army
Nov.	8	— Open —
Nov.	15	Syracuse
Nov.	22	at Holy Cross

1987		
Sept.	12	Temple
Sept.	19	at Tennessee
Sept.	26	Penn State
Oct.	3	at Pittsburgh
Oct.	10	Army
Oct.	17	at Rutgers
Oct.	24	West Virginia
Oct.	31	— Open —
Nov.	7	at Notre Dame
Nov.	14	at Syracuse
Nov.	21	Holy Cross

Source: Sports Information Office

VARSITY HOCKEY SCHEDULE*
1984-85

Oct. 17	Northeastern	Jan. 8	at Boston University
Oct. 26	North Dakota	Jan. 11	Minnesota-Duluth
Oct. 28	North Dakota	Jan. 13	Minnesota-Duluth
Oct. 30	at New Hampshire	Jan. 16	New Hampshire
Nov. 4	at Providence	Jan. 19	Providence
Nov. 9	at Denver	Jan. 21	at Northeastern
Nov. 10	at Denver	Jan. 27	Maine
Nov. 13	Boston University	Jan. 30	Lowell
Nov. 17	at Lowell	Feb. 4	at Beanpot Tournament
Nov. 19	Holy Cross	Feb. 7	at New Hampshire
Nov. 23	at Minnesota	Feb. 11	at Beanpot Finals
Nov. 24	at Minnesota	Feb. 14	at Lowell
Nov. 30	at Michigan Tech	Feb. 17	Northeastern
Dec. 1	at Michigan Tech	Feb. 23	at Maine
Dec. 4	at Brown	Feb. 24	at Maine
Dec. 7	Northern Michigan	Feb. 27	Providence
Dec. 8	Northern Michigan	Mar. 3	Boston University
Dec. 21	Harvard	Mar. 8-9	Hockey East Quarterfinals
Dec. 28	Colorado College	Mar. 15-16	Hockey East Semi's & Finals (Providence C.C.)
Dec. 29	Colorado College	Mar. 22-23	NCAA Quarterfinals
Jan. 4	at Wisconsin	Mar. 28-30	NCAA Semi's & Finals (Detroit, Michigan)
Jan. 5	at Wisconsin		

*ECAC Division I Games in bold type.

Source: Sports Information Office

VARSITY BASKETBALL SCHEDULE*
1984-85

Nov. 12	Brazil	Jan. 19	St. John's (Boston Garden)
Nov. 27	at New Hampshire	Jan. 21	Pittsburgh
Dec. 2	Wake Forest (Boston Garden)	Jan. 26	at Connecticut
Dec. 5	at Brown	Jan. 28	Hartford
Dec. 8	Stonehill	Jan. 30	at Northeastern
Dec. 11	Rhode Island	Feb. 2	at Providence
Dec. 15	at Holy Cross	Feb. 5	Syracuse (Boston Garden)
Dec. 22	Randolph-Macon	Feb. 9	Georgetown (Boston Garden)
Dec. 28	at Cabrillo Classic	Feb. 12	at Seton Hall
&	(San Diego State, Michigan State,	Feb. 16	Villanova
Dec. 29	Texas Christian University)	Feb. 20	at St. John's
Jan. 2	Providence	Feb. 23	at Pittsburgh
Jan. 5	at Georgetown	Feb. 25	Connecticut
Jan. 8	at Syracuse	Mar. 6-9	at BIG EAST Championship Tournament, Madison Square Garden
Jan. 12	Seton Hall		
Jan. 15	at Villanova		

*BIG EAST games appear in bold type.

Source: Sports Information Office

GENERAL INFORMATION



FOUNDER OF BOSTON COLLEGE

Rev. John McElroy, S.J.
Pastor, Immaculate Conception Parish, Boston
1861-1863

PRESIDENTS OF BOSTON COLLEGE

1. John Bapst, S.J.	1863-1869	13. Thomas I. Gasson, S.J.	1907-1914
2. Robert W. Brady, S.J.	1869-1870	14. Charles W. Lyons, S.J.	1914-1919
3. Robert Fulton, S.J.	1870-1880	15. William Devlin, S.J.	1919-1925
4. Jeremiah O'Conner, S.J.	1880-1884	16. James H. Dolan, S.J.	1925-1932
5. Edward V. Boursaud, S.J.	1884-1887	17. Louis J. Gallagher, S.J.	1932-1937
6. Thomas H. Stack, S.J.	1887	18. William J. McGarry, S.J.	1937-1939
7. Nicholas Russo, S.J.	1887-1888	19. William J. Murphy, S.J.	1939-1945
8. Robert Fulton, S.J.	1888-1991	20. William L. Keleher, S.J.	1945-1951
9. Edward I. Devitt, S.J.	1891-1894	21. Joseph R.N. Maxwell, S.J.	1951-1958
10. Timothy Brosnahan, S.J.	1894-1898	22. Michael P. Walsh, S.J.	1958-1968
11. W.G. Read Mullan, S.J.	1898-1903	23. W. Seavey Joyce, S.J.	1968-1972
12. William F. Gannon, S.J.	1903-1907	24. J. Donald Monan, S.J.	1972-

Source: Secretary of the University

INDEX OF HONORARY DEGREES AS GRANTED BY BOSTON COLLEGE

D.A.	Doctor of Arts
D.B.A.	Doctor of Business Administration
D.C.S.	Doctor of Commercial Science
D.E.Sc.	Doctor of Engineering Science
D.F.A.	Doctor of Fine Arts
D.Journ.	Doctor of Journalism
D.Mus.	Doctor of Music
D.N.S.	Doctor of Nursing Science
D.Pub.Adm.	Doctor of Public Administration
D.Sc.	Doctor of Science
D.Sc.Ed.	Doctor of Science in Education
D.Sc.L.	Doctor of the Science of Law
D.Sc.T.	Doctor of the Science of Theology
D.S.S.	Doctor of Social Science
H.D.	Doctor of History
Hist.Phil.D.	Doctor of History in Philosophy
J.U.D.	Doctor of Civil and Canon Laws
L.H.D.	Doctor of Humane Letters
LL.D.	Doctor of Laws
Litt.D.	Doctor of Letters, Doctor of Literature
R.D.	Doctor of Religion
S.T.D.	Doctor of Sacred Theology
Sc.D.	Doctor of Science

Source: Commencement Programs, 1952-1984

**HONORARY DEGREES AWARDED BY BOSTON COLLEGE
1952-1984**

1952

Gregory Peter XV Cardinal Agagianian, LL.D.
(January 14, 1952)
James B. Connolly, Litt.D.
James M. O'Neill, LL.D.
Most Rev. Thomas F. Markham, LL.D.*
Rt. Rev. Thomas J. Riley, LL.D.
James J. Ronan, LL.D.

1953

Dorothy L. Book, LL.D.
Most Rev. James L. Connolly, LL.D.
Clifford J. Laube, LL.D.
Francis J. O'Halloran, A.M.
Most Rev. Leonard J. Raymond, LL.D.*
Alex Ross, A.M.
John C. H. Wu, LL.D.

1954

Edward H. Chamberlin, LL.D.
John J. Hearne, LL.D.*
James W. Manary, Sc.D.
Thomas A. Printon, LL.D.
Ven. Bro. William Sheehan, C.F.X., LL.D.
Most Rev. Christopher J. Weldon, LL.D.
Louis de Wohl, Litt.D.
William J. O'Keefe, LL.D. (November 21, 1954)

1955

Fred J. Driscoll, LL.D.
Christian A. Herter, LL.D.
Edward A. Hogan, Jr., LL.D.*
Rear Adm. Bartholomew W. Hogan, Sc.D.
John B. Hynes, LL.D.
His Beatitude Maximus IV, LL.D.
(August 23, 1955)
Valerian Cardinal Gracias, LL.D.
Russel Kirk, Litt.D.
Edward A. Sullivan, LL.D.

1956

Bartholomew A. Brickley, LL.D.
Peter J. W. Debye, Sc.D.
Most Rev. Frederick A. Donaghy, LL.D.
John F. Kennedy, LL.D.*
John W. King, LL.D.
Charles Munch, D.Mus.
Edward F. Williams, LL.D.

1957

Wallace E. Carroll, LL.D.
Arthur J. Kelly, LL.D.
Augustus C. Long, LL.D.*
Adrian O'Keeffe, LL.D.
Very Rev. Msgr. Patrick W. Skehan, LL.D.
Nils Y. Wessell, LL.D.

1958

Most Rev. Amleto G. Cicognani, LL.D. (April 21, 1958)
Carl J. Gilbert, LL.D.
Paul Horgan, Litt.D.
Barnaby C. Keeney, LL.D.*
Henry M. Leen, LL.D.
Jacques Maritain, LL.D.
Raissa Maritain, LL.D.
Harold Marston Morse, D.Sc.
Rev. John B. Sheerin, C.S.P., LL.D.
Francis Cardinal Spellman, LL.D. (December 8, 1958)

1959

His Excellency Sean T. O'Kelly, LL.D. (March 22, 1959)
Ernest Henderson, LL.D.
Rev. John LaFarge, S.J., LL.D.
Henry Cabot Lodge, LL.D.
George Meany, LL.D.
Carlos P. Romulo, LL.D.*
Helen C. White, Litt.D.

1960

Marian Anderson, D.Mus.
J. Peter Grace, LL.D.
Caryl P. Haskins, LL.D.
Robert F. Kennedy, LL.D.
Charles Malik, LL.D.*
Most Rev. Russell J. McVinney, LL.D.
Samuel Eliot Morison, LL.D.
Rt. Rev. Matthew P. Stapleton, LL.D.
Rev. Henry M. Brock, S.J., D.Sc. (October 12, 1960)

1961

Allen W. Dulles, LL.D.
Anthony Julian, LL.D.
Robert D. Murphy, LL.D.*
Louis R. Perini, LL.D.
Abraham Ribicoff, LL.D.
Rt. Rev. Robert J. Sennott, LL.D.
Edward Teller, LL.D.

*Commencement Speaker

1978

Bruno Bettelheim, Litt.D.
 Rev. Charles F. Donovan, S.J., L.H.D.
 Charles D. Ferris, LL.D.*
 Marvin E. Frankel, LL.D.
 John William McDevitt, LL.D.
 Leo Perlis, D.S.S.

1979

Dorothy Baker, D.S.S.
 Edward Patrick Boland, LL.D.
 George P. Donaldson, LL.D.
 Richard Ellmann, L.H.D.
 Robben W. Fleming, L.H.D.
 Walter F. Mondale, LL.D.*
 David S. Nelson, LL.D.*

1980

Germaine Bree, Litt.D.*
 Albert M. Folkard, L.H.D.
 Edward J. King, D. Pub. Admn.
 Joseph Cardinal Malula, LL.D.
 Bernard J. O'Keefe, D.E.Sc.
 Kevin H. White, LL.D.

1981

Tomas Cardinal O Fiaich, Litt. D. (October, 1981)
 Rev. Joseph Delphis Gauthier, S.J., L.H.D.
 Margaret M. Heckler, LL.D.
 Rose Fitzgerald Kennedy, L.H.D.
 Donald F. McHenry, LL.D.
 Joseph Harry Silverstein, D.A.
 Paul Donovan Sullivan, D.S.S.
 Thomas P. O'Neill, Jr., The Ignatius Medal*

1982

Rev. Robert I. Burns, S.J., L.H.D.
 George Bush, LL.D.*
 Robert A. Charpie, D.Sc.
 Josephine L. Taylor, D.Sc.Ed.

1983

Maya Angelou, L.H.D.
 Virginia A. Henderson, D.N.S.
 Joseph McKenney, D.Ed.
 Vincent T. O'Keefe, S.J., L.H.D. (March, 1983)
 Bruce J. Ritter, O.F.M., D.S.S.*
 An Wang, LL.D.

1984

Leon Higginbotham
 Richard Hill
 Most. Rev. Bernard F. Law*
 Robert Merrifield
 Muriel Sutherland Snowden
 Otto Phillip Snowden

*Commencement Speaker

Source: Secretary of the University

TYPES OF DEGREES CONFERRED AT BOSTON COLLEGE

Bachelor of Arts (A.B.)
 Bachelor of Science (B.S.)
 Master of Arts (M.A.)
 Master of Arts in Teaching (M.A.T.)
 Master of Business Administration (M.B.A.)
 Master of Education (M.Ed.)
 Master of Science (M.S.)
 Master of Science in Teaching (M.S.T.)
 Master of Social Work (M.S.W.)
 Certificate of Advanced Educational Specialization (C.A.E.S.)
 Doctor of Philosophy (Ph.D.)
 Doctor of Law (J.D.)
 Doctor of Education (D.Ed.)
 Doctor of Social Work (D.S.W.)

ACCREDITING AGENCIES

American Assembly of Collegiate Schools of Business
American Bar Association
American Chemical Society
American Psychological Association
Association of American Law Schools
Council on Social Work Education
Interstate Certification Compact
National Council of Accreditation of Teacher Education
National League for Nursing
New England Association of Schools and Colleges

ASSOCIATION MEMBERSHIPS*

American Association of Colleges of Nursing	International Association of Schools of Social Work
American Association of College Registrars and Admissions Officers	International Association of Universities
American Association of Colleges for Teacher Education	International Federation of Catholic Universities
American Association of Comparative Law	Jesuit Student Personnel Association
American Association for Higher Education	National Association of College Admissions Counselors
American Association of University Women	National Association of College and University Business Officers
American Council on Education	National Association of Independent Colleges and Universities
American Educational Research Association	National Association of Student Financial Aid Administrators
American Public Welfare Association	National Association of Student Personnel Administrators
Association of American Colleges	National Association of Catholic Charities
Association of Catholic Colleges and Universities	National Conference of Deans & Directors of Graduate Schools of Social Work
Association of Collegiate Schools of Planning	National Conference of Social Welfare
Association for Continuing Higher Education	National League for Nursing
Association of Independent Colleges and Universities in Massachusetts	New England Educational Research Organization
Association for Institutional Research	North American Association of Summer Sessions
Association of Jesuit Colleges and Universities	Northeastern Association of Graduate Schools
Association of Urban Universities	Alpha Sigma Nu**
Boston Library Consortium	Order of the Coif**
Boston Theological Institute	Phi Beta Kappa**
The College Board	
Council for Advancement and Support of Education	
Council for Exceptional Children	
Council of Graduate Schools in the U.S.	

*The above listing is meant only to be representative of the major types of memberships to which the University belongs.

**A complete listing of honor societies to which the University belongs may be found in the University Student Guide.

Source: Deans' Offices

ACADEMIC DEPARTMENT LOCATIONS

Accounting Department	Fulton 400
Administrative Sciences Department	Fulton 214
Arts and Sciences	Gasson 103
Biology Department	Higgins 321
Chemistry Department	Devlin 223
Classical Studies Department	Carney 122
Computer Sciences Department	Fulton 406
Counseling Psychology	McGuinn 314
Counselors:	
Arts and Sciences	Gasson 108
Education	Campion 301
Management	Fulton 205
Nursing	Cushing 103
Economics Department	Carney 131
Education	Campion 103-104A
Educational Foundations Program	Campion 310
English Department	Carney 449
Evening College	Fulton 314
Finance Department	Fulton 312
Fine Arts Department	Barry Pavilion 216, Newton Campus
General Management Program	Fulton 306
Geology and Geophysics Department	Devlin 209
Germanic Studies Department	Carney 326
Graduate Arts and Sciences	McGuinn 221A
History Department	Carney 115
Honors Programs:	
Arts and Sciences	Gasson 111
Education	Campion 104A
Management	Fulton 301
Instructional Leadership and Admin. Program	Campion 106
Law School	Stuart M307, Newton Campus
Law Department	Fulton 403
Management Center	Fulton 405A
Marketing Department	Fulton 301
Mathematics Department	Carney 318
Music Program	St. Mary's House, Newton Campus
Nursing	Cushing 210
Organizational Studies Program	Fulton 214
Philosophy Department	Carney 272
Physics Department	Higgins 355
Political Science Department	McGuinn 201
Psychology Department	McGuinn 301

Religious Education and Pastoral Ministry, Institute of
Romance Languages and Literatures Department
Slavic and Eastern Languages Department
Social Work Graduate School
Sociology Department
Special Education and Rehabilitation Program
Speech Communication and Theatre
Summer Session
Theology Department

31 Lawrence Ave.
Lyons 303
Carney 236
McGuinn 132
McGuinn 426
McGuinn B29
Lyons 214B
Fulton 314
Carney 418

Source: Registrar

SOURCES

Academic Vice President
Admissions
Alumni Association
Buildings and Grounds
Bureau of Conferences
Controller's Office
Deans' Offices
Development Office
Dining Department
Financial Aid Office
Office of Financial Vice President and Treasurer
Health Services Office
Housing Office
Personnel Relations
President's Office
Registrar
Research Administration
Secretary of the University
Space Management
Sports Information Office
Office of Student Programs and Resources
Summer Session Office
University Archivist
University Counseling Services
University Librarian
Information Services, University Relations

*N.B. Sources are responsible for the accuracy and completeness
of data submitted for publication.*

*Cover Design: ZBR Publications, Inc.
Photos: Lee Pellegrini*

*Published by: ZBR Publications, Inc.
3 Industrial Way
Wilmington, MA 01887*

ACADEMIC CALENDAR

1984-85	First Semester	1985-86
Sept. 1-4	Freshmen and Transfer Orientation	Aug. 3-Sept. 3
Sept. 4	Registration for Students not Pre-registered	Sept. 3
Sept. 5	Classes begin	Sept. 4
Sept. 5	Faculty Convocation	Sept. 4
Oct. 8	Columbus Day — No Classes	Oct. 14
Nov. 12	Veteran's Day — No Classes	Nov. 11
Nov. 21-23	Thanksgiving Holiday begins at Noon	Nov. 27-29
Dec. 13-14	Study Day — No Undergraduate Classes	Dec. 11-12
Dec. 14-21	Term Examinations	Dec. 13-20
Dec. 22-Jan. 15	Holidays	Dec. 21-Jan. 11
	Second Semester	
Jan. 14-15	Freshmen and Transfer Orientation	Jan. 10-11
Jan. 15	Registration for Students not Pre-registered	Jan. 11
Jan. 16	Classes begin	Jan. 13
	Martin Luther King's Birthday — No Classes	Jan. 20
Feb. 18	Washington's Birthday — No Classes	Feb. 17
Mar. 4-8	Spring Vacation	Mar. 3-7
April 5-8	Easter Recess	Mar. 28-31
April 15	Patriot's Day — No Classes	April 21
April 30-May 1	Study Days — No Undergraduate Classes	April 29-30
May 2-9	Term Examinations	May 1-8
May 20	Commencement	May 19

Source: Office of the Academic Vice President