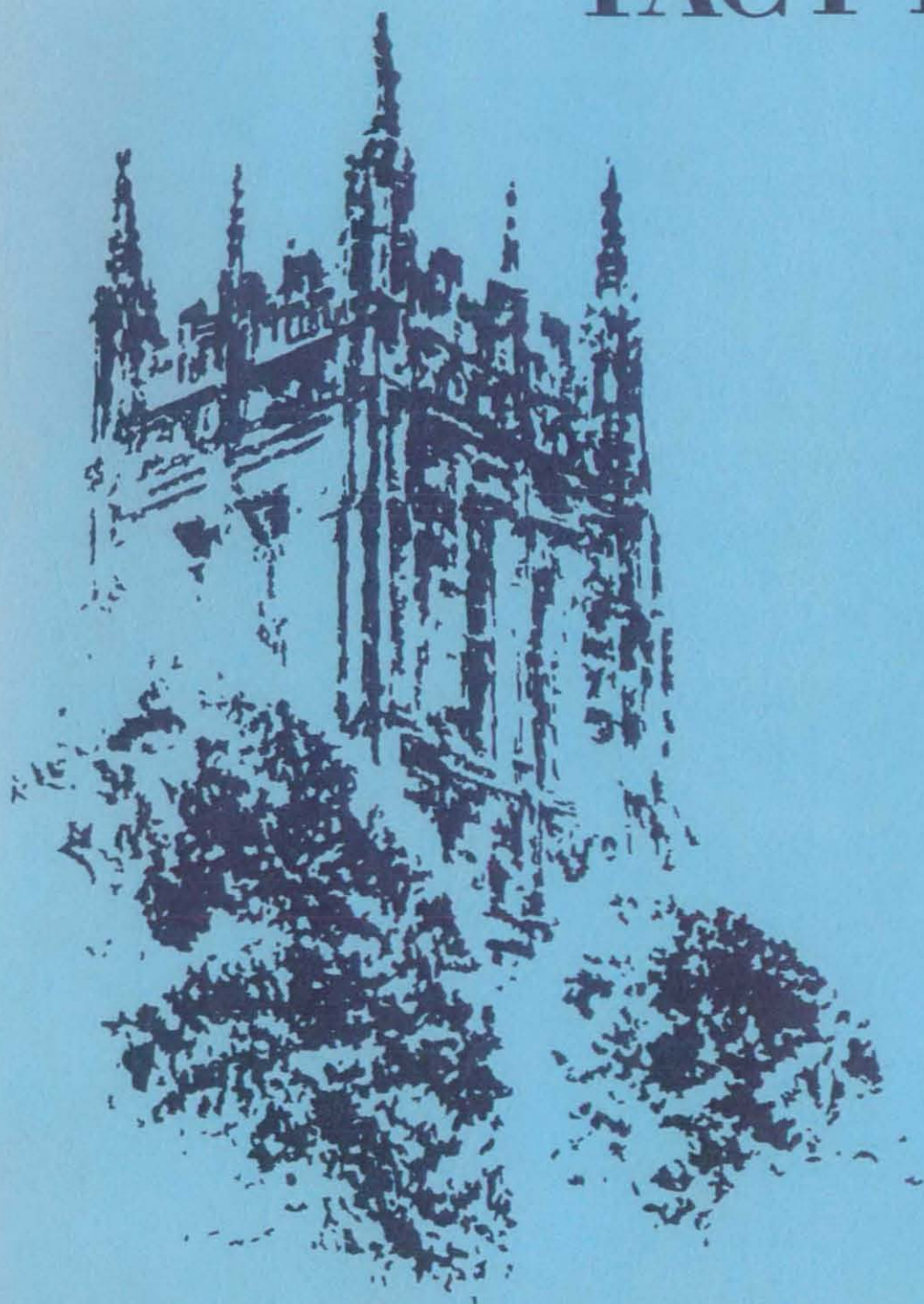
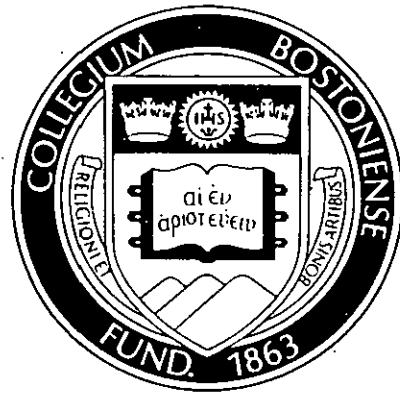


**BOSTON COLLEGE
FACT BOOK
1977**



Judy Kersone

BOSTON COLLEGE FACT BOOK 1977





FOREWORD

It is a pleasure to publish the 1977 edition of the *Boston College Fact Book*, the contents of which have again been expanded to include data suggested by our readers. Because of the quantity of information to be reproduced, it has become too costly and too time-consuming to retype the entire book each year, and we have therefore switched to computerized typesetting. All data are now stored on magnetic tape, which means that the annual update can be accomplished merely by supplying the printer with the latest figures. Additional information can be incorporated just as easily. Besides economy and speed, the new production method has resulted in a less cumbersome book, and easier-to-read tables.

The *Fact Book* serves as a single source for Boston College's vital statistics, which could otherwise be obtained only by consulting each contributor individually. Obtaining numbers from one reference document also assures consistency in published figures. As always, we have attempted to find and correct inaccuracies or inconsistencies. If you spot any, please let us know. We also welcome ideas for improvements and refinements, as well as suggestions for additional data that our readers might find useful.

Judith Jack, Editor

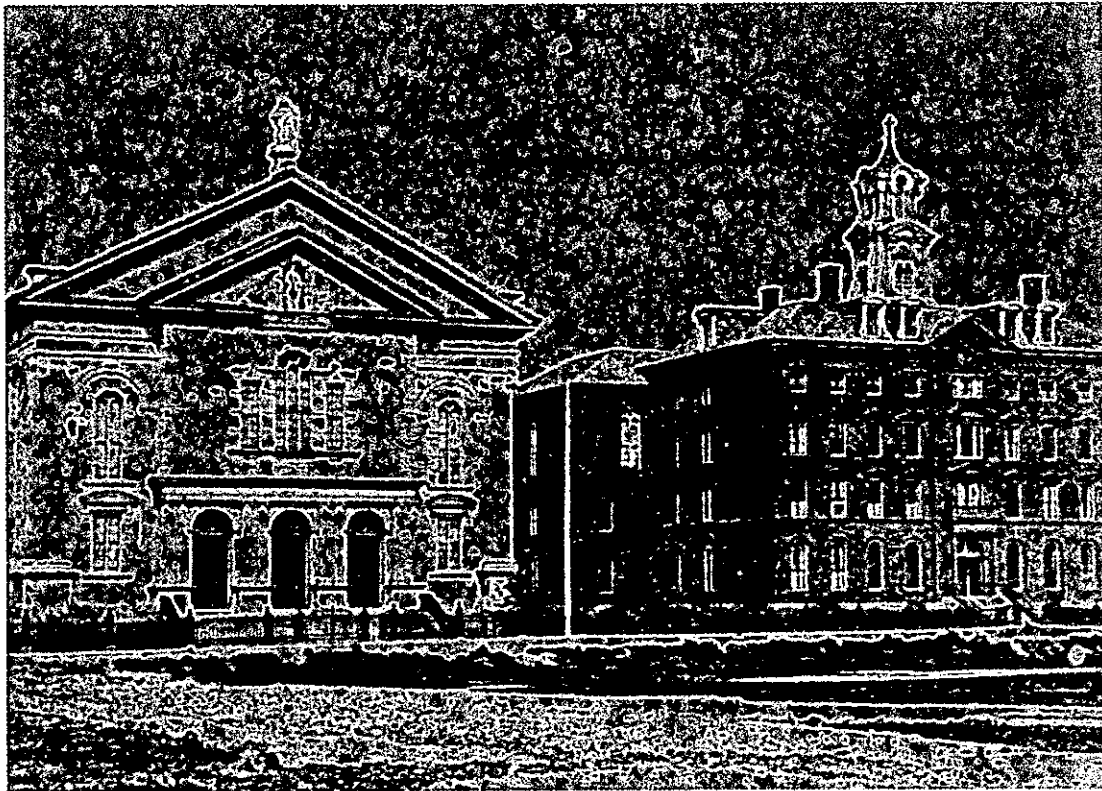
Office of the Vice President
Financial and Business Affairs

October 1, 1977

**Boston College Fact Book
Table of Contents**

	Page
Foreword	I
Table of Contents	II
Boston College Then and Now	V
Boston College Profile	VI
 I. ADMINISTRATION AND FACULTY	
Chart of Administration	2
Board of Trustees	4
Officers of the University	5
University Administrators	5
Deans	6
Department Chairmen	7
Non-Faculty Personnel	8
Faculty:	
- by School and Rank	8
- by School and Sex	9
- by School and Tenure Status	9
- by Highest Earned Degree and Rank	9
- by Highest Earned Degree and Sex	10
- by Rank and Sex	10
- Full-Time Equivalent by School	10
- Average Compensation by Rank	11
University Academic Senate:	
- Membership Classification	11
- Membership List — 1976-77	12
 II. STUDENTS	
Freshman Applications and Enrollment	14
Freshman Applications and Acceptances 1977-78 — Geographic Distribution	14
SAT Averages by Class	15
Enrollment:	
- Undergraduate Transfer Students by Year and Sex	15
- Undergraduate Transfer Students by Type of Previous Institution	15
- Graduate and Undergraduate, Full- and Part-Time	16
- Undergraduate, Day and Evening, and Graduate	16
- Undergraduate, by School	16
- Graduate, by School	16
- Graduate, by Degree Program and Discipline	17
- Undergraduate and Graduate, by Sex	18
- Full-Time Equivalent	18
- Evening College	19
- Summer Session	19
- Geographic Distribution of Students	20
- International Students	21
- Minority Enrollment	22
- Veterans	22
Undergraduate Degrees Conferred:	
- by Degree and Number of Majors	23
- by Major	24
- by School and by Major	25

	Page
Undergraduate and Graduate Degrees Conferred, by Degree and by Sex	26
Undergraduate and Graduate Financial Aid	
- Dollars	27
- Number of Students	28
Health Services	28
III. ALUMNI	
New England	30
Geographic Analysis by State	30
Boston College Alumni Clubs	31
Boston College Alumni Activities	31
New Heights Campaign Leadership	32
IV. PHYSICAL PLANT	
Boston College Properties	35
Map — Boston College & Vicinity	36
Map — Chestnut Hill Campus	37
Map — Newton Campus	38
Summary of Building Use	39
Buildings — Location and Primary Use	39
Dormitories	41
Classrooms	42
Dining Facilities	42
Offices	42
V. FINANCE	
Revenues and Expenditures	44
Tuition and Fees — 1966-67 through 1977-78	45
Tuition Restated in 1967 Dollars	46
Contracts and Grants, by Source of Funding	46
Contract and Grant Awards 7/1/76-3/31/77	47
VI. LIBRARIES	
Libraries	51
Library Hours	51
Holdings by Individual Libraries	51
Expenditures for Books	52
Volume Acquisitions	52
Circulation Statistics	52
Special Collections	53
Data Bases Available	54
VII. ATHLETICS	
Sports at Boston College	57
Varsity Sports Records	58
Varsity Football Schedules — 1977-1980	58
Varsity Hockey Schedule — 1977-78	59
Varsity Basketball Schedule — 1977-78	59
Community Use of Recreational Facilities	60
VIII. GENERAL INFORMATION	
Types of Degrees Conferred	63
Accrediting Agencies and Association Memberships	63
Founder and Presidents	64
Honorary Degrees Awarded	64
Academic Department Locations	67
Sources and Bibliography	68
Academic Calendar	Inside Back Cover



The original arrangement of the buildings at the Old Boston College.
Photographed sometime before 1875 by Oliver Wendell Holmes

BOSTON COLLEGE

Then And Now . . .

Boston College was founded by the Society of Jesus in 1863, and is one of twenty-eight Jesuit colleges and universities in the United States. With three teachers and twenty-two students, the school opened its doors on September 5, 1864. While it remained a small liberal arts college, the faculty was predominantly Jesuit, but today's full-time faculty is comprised of over 500 lay men and women, and 100 Jesuits. There are upwards of 60,000 alumni scattered from Beacon Hill to American Samoa.

Originally located on Harrison Avenue in the South End of Boston, where it shared quarters with the Boston College High School, the College outgrew its urban setting toward the end of its first fifty years. A new location was selected in Chestnut Hill, then almost rural, and four parcels of land were acquired in 1907. A design competition for the development of the campus was won by the firm of Maginnis and Walsh, and ground was broken on June 19, 1909, for the construction of Gasson Hall. It is located on the site of the Lawrence farm house, in the center of the original tract of land purchased by Father Gasson, and is built largely of stone taken from a quarry which occupied part of the sites of Devlin, Higgins, and Cushing Halls. The foundations were blasted out of solid ledge. Because of its historic value, Gasson was completely restored in 1976 in order to preserve its familiar Gothic spires for future generations of students and alumni.

Later purchases doubled the size of the property, with the addition of the upper campus in 1941, and the lower campus with the purchase of the Lawrence Basin and adjoining land in 1949. In 1974 Boston College acquired Newton College of the Sacred Heart, a mile-and-a-half from the main campus. With fifteen handsome Georgian buildings standing in a park-like estate of forty acres, it is now the site of the Boston College Law School, as well as several academic departments, and dormitories housing over 700 freshmen and sophomores.

Though incorporated as a University since its beginning, it was not until its second half-century that Boston College began to fill out the dimensions of its University charter. The Summer Session was inaugurated in 1924; the Graduate School of Arts and Sciences in 1925; the Law School 1929; the Evening College, 1929; the Graduate School of Social Work, 1936; the School of Management, 1938; the School of Nursing, 1947; and the School of Education in 1952.

Weston Observatory, founded in 1928, was accepted as a Department of Boston College in 1947, offering courses in geophysics and geology to graduate students. The main concerns of the Observatory are recording and locating earthquakes, research in the earth's magnetic field, and the study of the earth's crust in the Boston area. The facilities include an Earth Science Library, seismic vault, and magnetic observation complex.

In 1929 Boston College conferred one earned bachelor's degree and fourteen master's degrees on fifteen teaching sisters through the Extension Division that was the precursor of the Graduate School of Arts and Sciences, the Evening College, and the Summer Session. Today, women students comprise at least 50% of the University's enrollment, and 25% of the total alumni.

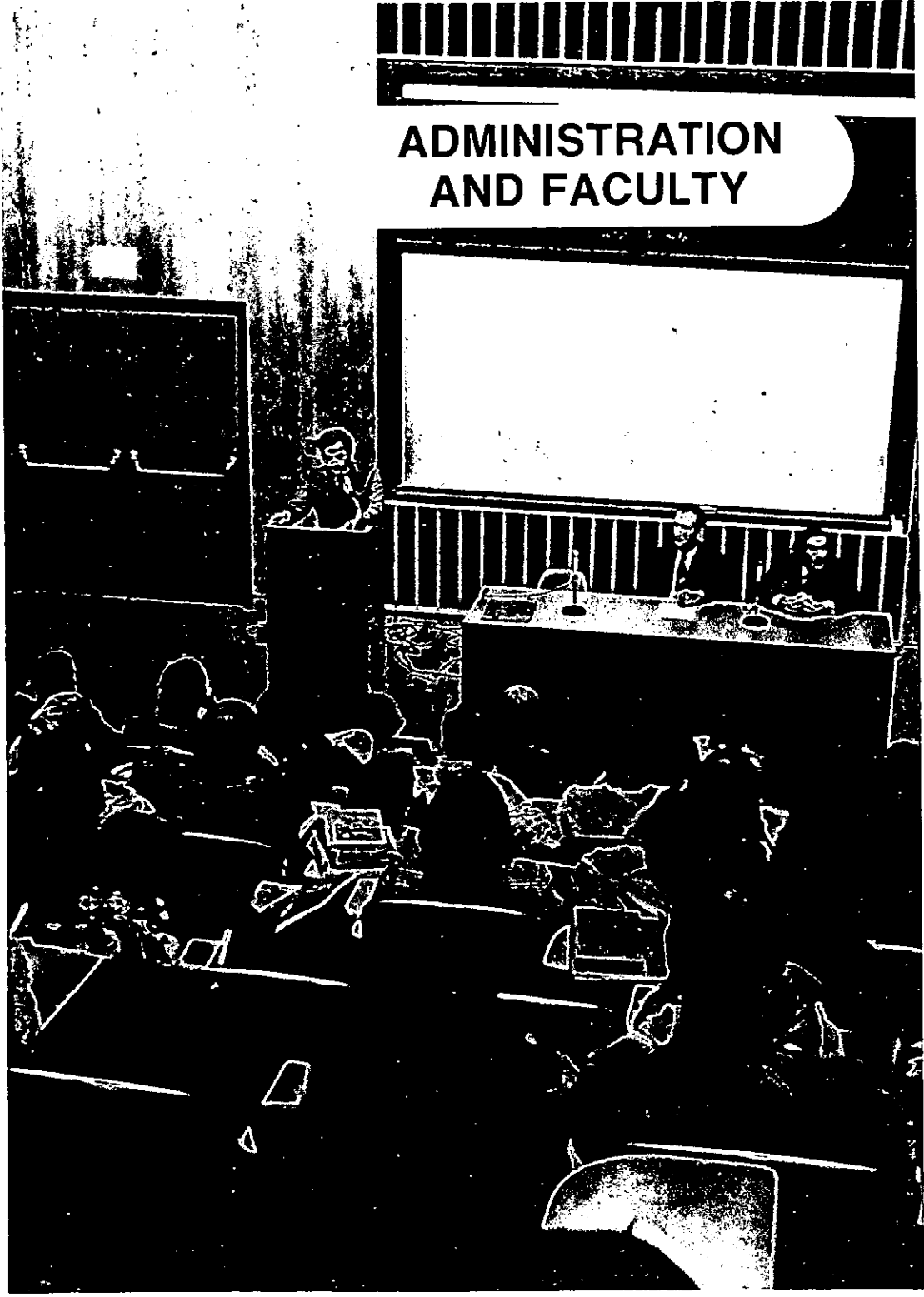
In 1976 Boston College was accredited by, or a member of, twenty-three professional organizations and accrediting agencies. It is now the fourth largest private university in New England, with full- and part-time enrollment over 13,000, and consists of eleven schools, colleges, and institutes offering fourteen degree programs and one certification program.

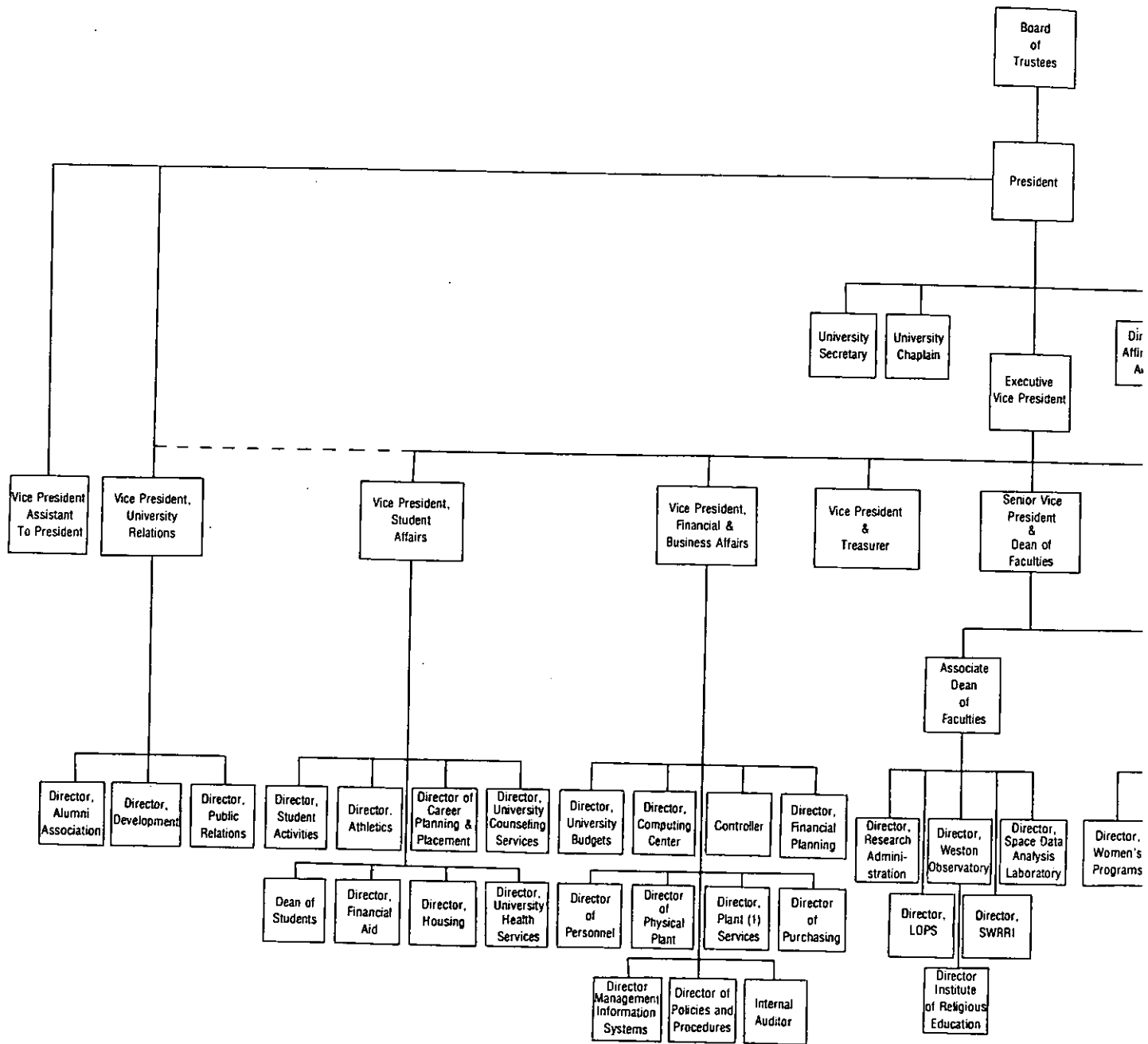
-Excerpted from "A Guide to the Campus"

Boston College Profile

	1976-77
ADMISSIONS	
Applicants	10,848
Registrants (Fall '76)	
Men	1,041
Women	1,091
Total Freshman Class	2,132
ENROLLMENT - (Full and Part-Time)	
Undergraduate	9,899
Graduate	3,713
	13,612
PERSONNEL	
Full-Time Faculty	541
Part-Time Faculty	268
Teaching Fellows	121
Graduate Assistants	244
Administrative/Professional Staff	307
Secretarial/Clerical/Service Staff	859
	2,340
DEGREES CONFERRED	
Undergraduate	2,063
Graduate & Professional	1,159
	3,222
ALUMNI	67,091
LIBRARIES - (total holdings)	948,524
PHYSICAL PLANT	
Acres:	
Chestnut Hill Campus	110.6
Newton Campus	40.2
Other	9.6
	160.4
Buildings:	
Administrative/Academic	25
Student Housing	31
Other	21
	77
FINANCE	
Revenues	\$54,833,000*
Expenditures	\$54,484,000

**ADMINISTRATION
AND FACULTY**



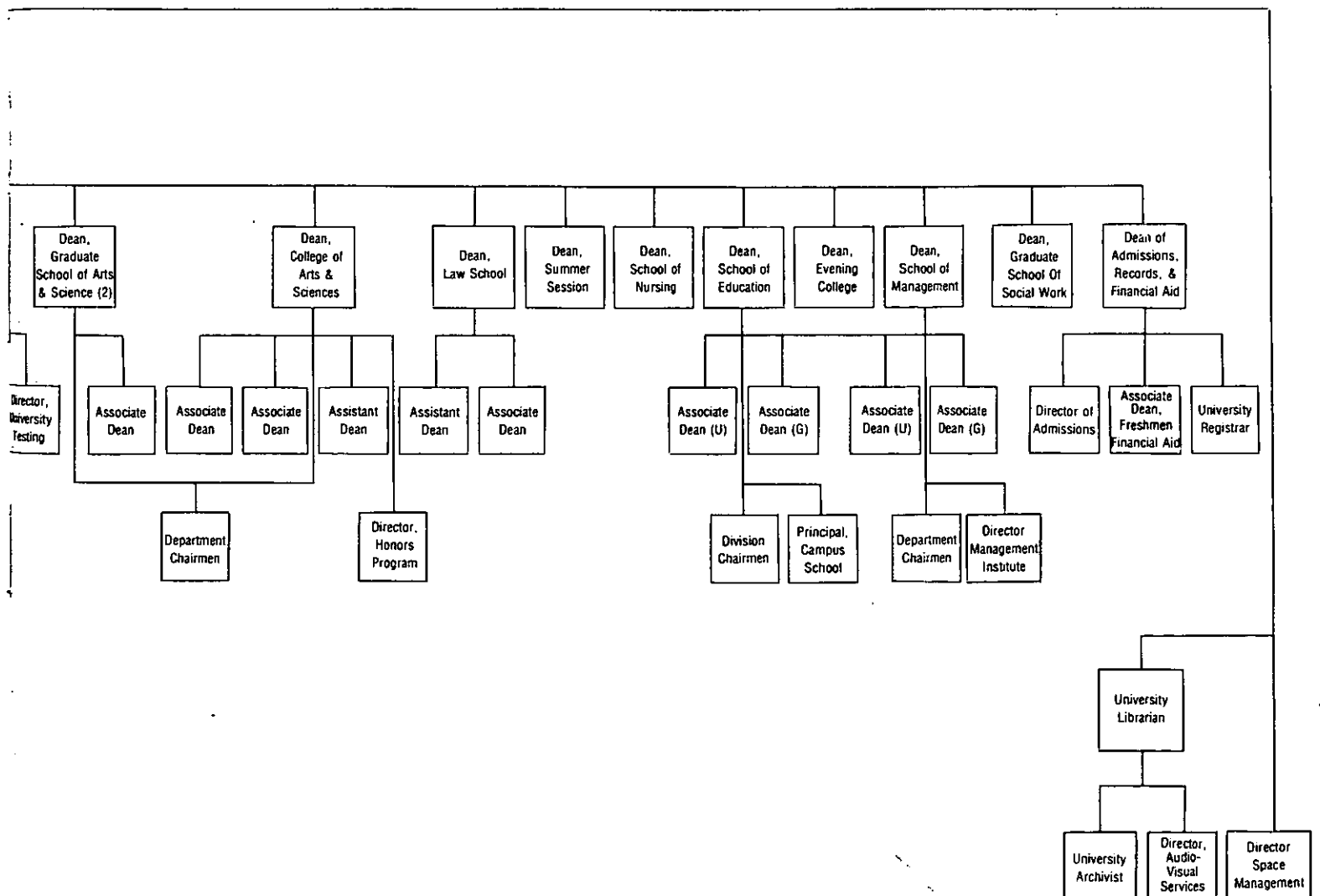


(1) Plant Services:
 Bookstore
 Food Service
 Housekeeping
 Safety and Security
 Telecommunications
 Mail
 Bureau of Conferences

(2) Includes Graduate Program in Education and Nursing

Source: Personnel Office

BOSTON COLLEGE CHART OF ADMINISTRATION, 1977



Board of Trustees

- Joseph F. Abely, Jr., '50
*Executive Vice President,
R.J. Reynolds Industries, Inc.*
- William L. Brown
*President and Director,
First National Bank of Boston*
- James F. Cleary
*President and Chief Operating Officer,
Blythe, Eastman, Dillon & Co., Inc.*
- William F. Connell, '59*
*Chairman of the Board and President,
Ogden Food Service Corporation*
- Joseph F. Cotter, '49*
*Senior Vice President and Controller,
The Sheraton Corporation*
- George L. Drury, S.J., '45, A.M. '46, M.S. '49.
*Director,
Campion Residence and Renewal Center*
- Joseph F. Fahey, S.J., '60, M.A. '61
Academic Dean, College of the Holy Cross
- John T. Fallon
President, R.M. Bradley & Co., Inc.
- Stephen E. Fix
Ph.D. Candidate, Cornell University
- Diane J. Forte, '77
Graduate Student, Purdue University
- Thomas J. Galligan, Jr., '41, L.L.D. '75 (Hon.)*
*President,
Boston Edison Company*
- Thomas J. Gibbons, S.J., '53, S.T.L. '61
*Principal,
Boston College High School*
- Avram Goldberg
President, The Stop and Shop Companies, Inc.
- Patricia A. Goler, '51, Ph.D. '57
*Dean, The College of Liberal Arts,
University of Lowell*
- Anne P. Jones, B.S. '58, J.D. '61
*Director of Investment Management
Securities and Exchange Commission*
- The Honorable Edward M. Kennedy L.L.D. '66
(Hon.)
United States Senator
- Mary M. Lai
Treasurer, Long Island University
- John Lowell*
Partner, Welch & Forbes
- Joseph F. MacDonnell, S.J., S.T.L. '62
*Assistant Professor of Mathematics,
Fairfield University*
- Francis C. Mackin, S.J., M.A. '53
Provost, Fordham University at Lincoln Center
- Joseph E. McCormick, S.J.
*Province Director of Vocations and
Assistant to the President
Society of Jesus of New England*
- Robert A. Mitchell, S.J.
Director, Woodstock Theological Center
- J. Donald Monan, S.J.*
President, Boston College
- Giles E. Mosher, Jr., '55
*Chairman of the Board, Baybank/
Newton-Waltham Trust Company*
- The Honorable David S. Nelson, '57, J.D. '60
Magistrate, Superior Court of Massachusetts
- William J. O'Halloran, S.J., '51, M.A. '52*
President, Le Moyne College
- Joseph A. O'Hare, S.J.
Editor-in-Chief, America Magazine
- Robert J. O'Keefe, '51
Senior Vice President, Chase Manhattan Bank
- James P. O'Neill, '42*
Senior Vice President, Xerox Corporation
- The Honorable Thomas P. O'Neill, Jr., '36,
L.L.D. '73 (Hon.)
*Speaker of the House of Representatives,
United States Congress*
- Cornelius W. Owens, '36, L.L.D. '68, (Hon.)*
*Executive Vice President (retired), American
Telephone and Telegraph Company*
- John W. Padberg, S.J.
President, Weston School of Theology
- Daniel J. Shine, S.J.
Rector of the Jesuit Community, Boston College
- Helen M. Stanton, M.S.W. '43
*Co-chairman
Boston College Parents' Committee*
- Sandra J. Thomson, M.D., '58 (Newton College)
*Department of Orthopedic Surgery
Children's Hospital Medical Center*
- Michael P. Walsh, S.J.*
Boston College High School
- Vincent C. Ziegler, L.L.D. '75 (Hon.)
*Chairman of the Executive Committee and
Director, The Gillette Company, Inc.*

* Executive Committee member.

Source: President's Office

Officers of the University

President	J. Donald Monan, S.J.
Executive Vice President	Francis B. Campanella
Senior Vice President and Dean of Faculties	Charles F. Donovan, S.J.
Vice President for University Relations	James P. McIntyre
Vice President and Treasurer	Thomas Fleming, S.J.
Vice President of Student Affairs	Kevin P. Duffy
Vice President, Financial and Business Affairs	John R. Smith
Vice President, Assistant to the President	Margaret A. Dwyer
Secretary of the University	Paul A. Fitzgerald, S.J.

University Administrators

John D. Beckwith <i>Director of Purchasing</i>	Bernard W. Gleason, Jr. <i>Director, Management Information Systems</i>
Robert J. Braunreuther, S.J. <i>University Chaplain</i>	Mary D. Griffin <i>Associate Dean, School of Education</i>
Catherine H. Briel <i>Controller</i>	William T. Griffith <i>University Registrar</i>
John M. Callahan <i>Director of Dining Services</i>	John L. Harrison <i>Associate Dean, College of Arts and Sciences</i>
J. Stephen Collins <i>Director of Financial Aid</i>	Norma Jean Hemphill <i>Principal, Campus School</i>
Richard E. Collins <i>Director of Housing</i>	Alice Jeghelian <i>Director, Affirmative Action</i>
Justin C. Cronin <i>Associate Dean, The School of Management</i>	Weston M. Jenks, Jr., <i>Director, University Counseling Services</i>
James J. Daley <i>Dir., University Safety, Security, and Telecommunications</i>	Paul M. Kane <i>Assistant Dean, The Law School</i>
Margaret Dever <i>Director of Women's Programs in Continuing Education</i>	James P. Kennedy <i>Director, University Budgets</i>
John Dunnet <i>Director of Internal Audit</i>	Lorraine Kinnane <i>Director, University Testing</i>
John G. Durkin <i>Bookstore Manager</i>	Martin D. Lowenthal <i>Director, Social Welfare Regional Research Institute</i>
John M. Flackett <i>Associate Dean, The Law School</i>	Joseph F. MacSweeney <i>Director, Plant Services</i>
Charles Flaherty <i>Director of Research Administration</i>	Richard Maffei <i>Associate Dean, The School of Management</i>
William J. Flynn <i>Director of Athletics</i>	Raymond J. Martin <i>Associate Dean, The School of Education</i>
Albert M. Folkard <i>Director, Honors Program</i>	Arnold F. Mazur, M.D. <i>Director, Health Services</i>
Marc A. Fried <i>Director, Laboratory of Psychosocial Studies</i>	Rev. Richard P. McBrien <i>Director, Institute of Religious Education</i>

Marie M. McHugh
*Assistant Dean, The College of Arts
and Sciences*

John McKiernan
Director, Management Institute

Henry J. McMahon
*Associate Dean, The College Arts
and Sciences*

Edward D. Miller
Director, Public Relations

Francis F. Mills
Director, Financial Planning

Fred B. Mills, Jr.
*Director, University Policies
and Procedures*

Thomas F. O'Connell
University Librarian

Neil P. O'Keefe, S.J.
University Archivist

Alfred G. Pennino
Director, Buildings and Grounds

Joseph B. Pomeroy, S.J.
Director, Computer Center

Leo F. Power
Director, Space Date Analysis Laboratory

Fred J. Pula
Director, University Audio-Visual Services

James J. Scannell
Director, Admissions

James W. Skehan, S.J.
Director, Weston Observatory

John E. Steele
Director, Career Planning and Placement

Leo V. Sullivan
Director, Personnel

Roderick V. Wallick
Director, Space Management

Edmond D. Walsh, S.J.
Associate Dean, Freshmen Financial Aid

Carole L. Wegman
Director, Student Activities

John F. Wissler
Executive Director, Alumni Association

Deans

Mary A. Dineen

George Fuir, S.J.

June G. Hopps

Richard G. Huber

John J. Neuhauser (Acting)

Thomas P. O'Malley, S.J.

Lester E. Przewlocki S.C.E.

James A. Woods, S.J.

D. J. White

Edward J. Hanrahan, S.J.

John J. Maguire

*The School of Nursing
The Summer Session
The Graduate School of Social Work
The Law School
The School of Management
The College of Arts and Sciences
The Graduate School of Arts and Sciences
Evening College of Arts, Sciences
and Business Administration
Dean of Students
Dean of Admissions, Records
and Financial Aid*

Department Chairmen

Accounting	Frederick J. Zappala
Administrative Sciences	Walter H. Klein
Biology	Donald J. Plocke, S.J.
Chemistry	Jeong-Long Lin
Classical Studies	Eugene W. Bushala
Computer Sciences	John J. Neuhauser
Economics	Harold A. Petersen
English	Robert E. Reiter
Finance	Walter T. Greaney
Fine Arts	Marianne W. Martin
Geology and Geophysics	George D. Brown
Germanic Studies	Christoph Eykman
History	Andrew Buni
Law	William B. Hickey, M.Ed.
Marketing	Michael P. Peters
Mathematics	Rose R. Carroll
Philosophy	Joseph F.X. Flanagan, S.J.
Physics	Robert L. Carovillano
Political Science	David Manwaring
Psychology	Ali Banuazizi
Romance Languages and Literatures	Betty Rahv
Slavic and Eastern Languages	Michael J. Connolly
Sociology	Lynda Holmstrom
Speech Communication and Theater	John H. Lawton
Theology	Ernest L. Fortin (Acting)

Non-Faculty Personnel

	1975-76%				1976-77			
	Men	Women	Total	%T**	Men	Women	Total	%T**
Professional & Administrative Staff*	197	112	309	29%	201	106	307	26%
Secretarial/Clerical	27	336	363	34	69	367	436	37
Subtotal	224	448	672	63	270	473	743	64
Support Services:								
Trade Supervisors	18	-	18	2	15	2	17	1
Tradespeople	52	-	52	5	61	7	68	6
Maintenance	119	15	134	13	142	25	167	14
Campus Police	38	1	39	4	32	1	33	3
Switchboard	2	9	11	1	3	6	9	1
Dining Department	63	32	95	9	63	27	90	8
Nurses	-	12	12	1	-	11	11	1
Computer Technicians	4	-	4	-	3	-	3	-
General Service	18	3	21	2	24	1	25	2
Subtotal	314	72	386	36	343	80	423	37
TOTAL	538	520	1,058	100%	613	553	1,166	100%

*Includes sponsored program staff.

**Percent of total non-faculty personnel, rounded.

Source: Personnel Office

FACULTY

Faculty by School and Rank 1976-77

School	Professor		Associate		Assistant		Instructor		Total	
	No.	%	No.	%	No.	%	No.	%	No.	%
A & S	73	23	108	33	117	36	27	8	325	60
Education	15	26	15	26	18	32	9	16	57	10
Management	10	18	25	44	11	19	11	19	57	10
Nursing	1	2	18	32	22	38	16	28	57	11
Law	16	64	4	16	2	8	3	12	25	5
Social Work	2	10	11	55	7	35	-	-	20	4
Total*	117	22	181	33	177	33	66	12	541	100

*Excluding part-time lecturers, special contracts, and academic Administrators.

Source: Office of the Dean of Faculties

**Faculty by School and Sex
1976-77**

School	Women		Men		Total	
	No.	%	No.	%	No.	%
A & S	47	35	278	68	325	60
Education*	15	11	42	10	57	10
Management	1	1	56	14	57	10
Nursing*	57	43	0	0	57	11
Law	4	3	21	5	25	5
Social Work	9	7	11	3	20	4
Total**	133	25	408	75	541	100

Source: Office of Dean of Faculties

**Faculty by School and Tenure Status
1976-77**

School	Tenured		Non-Tenured		Total	
	No.	%	No.	%	No.	%
A & S	207	64	118	36	325	60
Education	31	54	26	46	57	10
Management	29	51	28	49	57	10
Nursing*	21	37	36	63	57	11
Law	17	68	8	32	25	5
Social Work	13	65	7	35	20	4
Total**	318	59	223	41	541	100

*Graduate faculty in the departments of Education and Nursing of the Graduate School of Arts and Sciences are included in these tables, with their respective undergraduate schools.

**Totals in distribution do not include part-time staff or academic administrators

Source: Office of Dean of Faculties

**Faculty by Highest Earned Degree and Rank
1976-77**

Degree	Professor		Associate		Assistant		Instructor		Total	
	No.	%	No.	%	No.	%	No.	%	No.	%
Doctorate	107	28	161	41	121	31	—	—	389	72
First Professional*	8	32	4	15	10	40	3	12	25	5
Masters	2	1	16	12	46	36	63	50	127	23
Total**	117	22	181	33	177	33	—	12	541	100

*Including LLB, JD, STB, PhL, and STL.

**Excluding part-time lecturers, special contracts and academic administrators.

Source: Office of the Dean of Faculties

**Faculty by Highest Earned Degree and Sex
1976-77**

Degree	Women		Men		Total	
	No.	%	No.	%	No.	%
Doctorate	66	50	332	81	398	74
First Professional*	3	2	19	5	22	4
Masters	<u>64</u>	48	<u>57</u>	14	<u>121</u>	22
Totals**	133		408		541	100

*Including LLB, JD, PhL, and STL.

**Excluding part-time lecturers, special contracts and academic administrators

Source: Office of the Dean of Faculties

**Faculty by Rank and Sex
1976-77**

Rank	Women		Men		Total	
	No.	%	No.	%	No.	%
Professor	10	8	107	26	117	22
Associate	40	30	141	35	181	34
Assistant	55	41	122	30	177	32
Instructor	<u>28</u>	21	<u>38</u>	9	<u>66</u>	12
Total*	133		408		541	100

*Excluding special contracts and academic administrators.

Source: Office of the Dean of Faculties

**Full-Time Equivalent Faculty by School
1976-77**

School	Full Time	FTE of Part Time	Total FTE Faculty
Arts and Sciences	325	74	399
Education*	57	12	69
Management	57	12	69
Nursing*	57	7	64
Law	25	6	31
Social Work	<u>20</u>	<u>5</u>	<u>25</u>
Total**	541	116	657

*Graduate faculty of the Departments of Education and Nursing of the Graduate School of Arts and Sciences are included in this table with their respective schools.

**Does not include full-time academic administrators and full-time academic directors, nor teaching fellows.

Source: Office of the Dean of Faculties

**Average Compensation by Rank
AAUP Category 1
(9-month equivalent)
1975-76**

Rank	Boston College	All Combined Category	Church-Related
Professor	\$26,972	\$28,080	\$25,190
Associate	21,271	20,630	19,700
Assistant	17,231	16,800	16,150
Instructor	13,943	13,170	13,170

Source: Office of Dean of Faculties

UNIVERSITY ACADEMIC SENATE

**Membership Classification
1976-77**

Classification		Total
Faculty		
Arts & Sciences	9	
Education	2	
Management	2	
Nursing	1	
Law	1	
Social Work	1	16
	—	
Administration		10
Undergraduate Students		
Arts & Sciences	5	
Education	1	
Management	1	
Nursing	1	
Evening College	1	9
	—	
Graduate Students		1
Total		36

Source: Corresponding Secretary, University Academic Senate

Membership List 1976-1977

ELECTED FACULTY SENATORS

College of Arts and Sciences

Prof. Lynne Ballew — Philosophy
Rev. Edward Callahan, S.J. — Theology
Rev. David F. Carroll, S.J. — Theology
Rev. Robert Cheney, S.J. — Economics
Prof. J. Christopher Hepburn — Geology
& Geophysics
Prof. Diana Hyman — Romance Languages
Prof. Antonio Mastrobuono — Romance Languages
Prof. Kristin Morrison — English
Prof. Dennis Taylor — English

School of Management

Prof. George A. Aragon
Prof. John Neuhauser

School of Education

Prof. John Junkala
Prof. Michael Schiro

School of Nursing

Prof. Marjory Gordon

Law School

Prof. James L. Houghteling

Graduate School of Social Work

Prof. Anne McInvale

EX-OFFICIO MEMBERS

Dr. Mary Dineen — Dean, School of Nursing
Rev. Charles F. Donovan, S.J. — Dean of Faculties
Dr. June G. Hopps — Dean, Graduate School
of Social Work
Prof. Richard G. Huber — Dean, Law School
Dr. Albert Kelley — Dean, School of Management
Dr. Thomas F. O'Connell — University Librarian

Rev. Thomas P. O'Malley, S.J. — Dean,
College of Arts and Sciences
Dr. Lester E. Przewlocki — Dean,
School of Education
Dr. Donald J. White — Dean, Graduate School
of Arts and Sciences
Rev. James A. Wood, S.J. — Dean,
Evening College

STUDENT SENATORS

Undergraduate Students

Larry Byron — Management
Liza Haller — Arts & Sciences
Marybeth Hopkins — Arts & Sciences
John Komar — Management
Mike Livingstone — Arts & Sciences
Ellie Mannarino — Education
Elizabeth Melville — Nursing
Timothy Ryan — Arts & Sciences

Graduate Students

Charles Molé — Graduate School of Arts & Sciences

Evening College Student

Margaret Everard

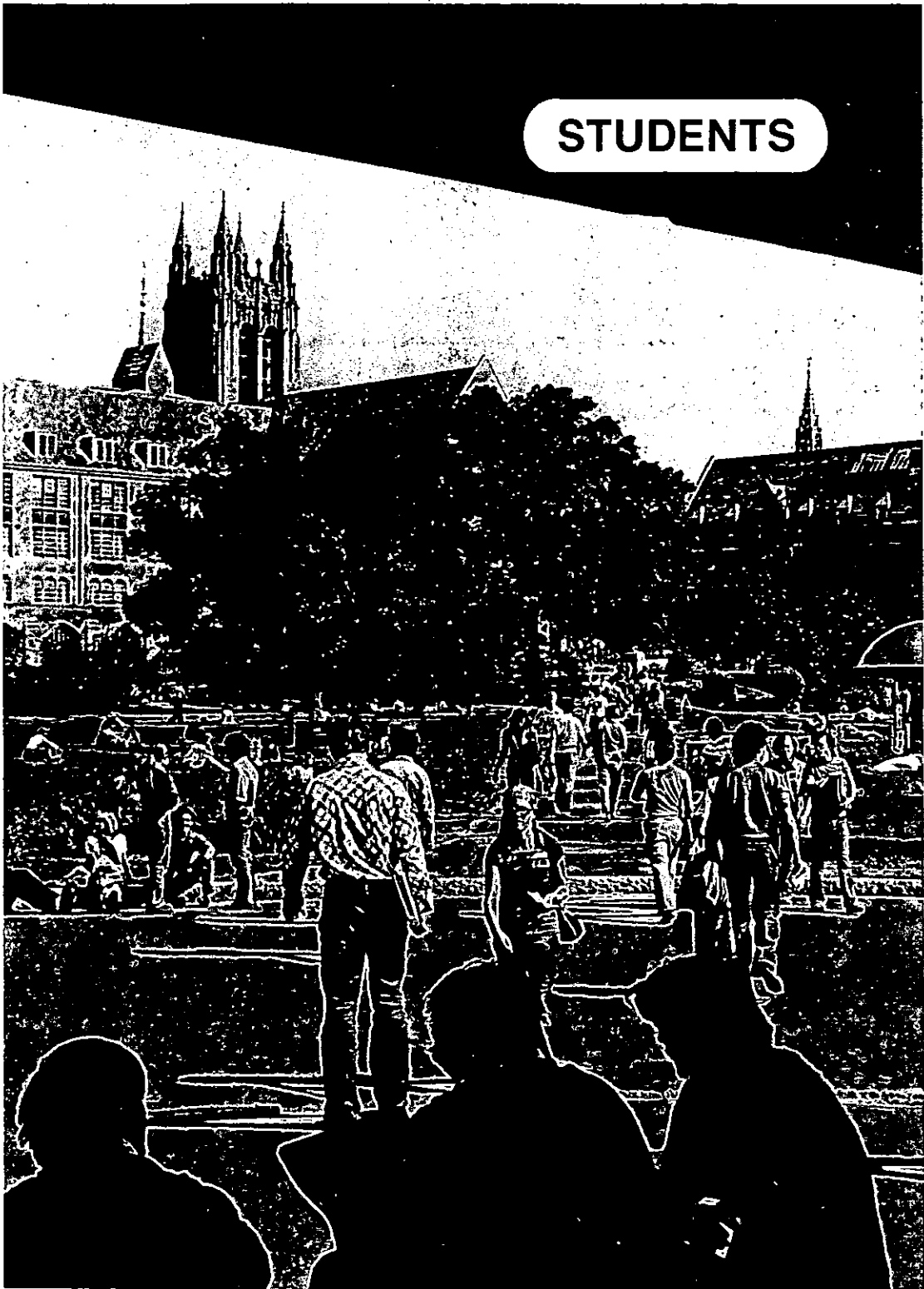
OFFICERS

Augustus J. Fabens — Moderator
Richard G. Huber — Vice-Moderator
Marybeth Hopkins — Secretary

EXECUTIVE COMMITTEE

Larry Byron
Rev. Edward Callahan, S.J.
Rev. Charles F. Donovan, S.J., ex-officio
Charles Molé
John Neuhauser
Rev. Thomas P. O'Malley, S.J.

STUDENTS



Freshman Applications And Enrollment

Fall	Applications	Men	Enrollment Women	Total
1969	5,242	1,232	364	1,596
1970	6,605	1,402	685	2,087
1971	6,712	1,024	725	1,749
1972	7,286	1,253	976	2,229
1973	8,358	913	874	1,787
1974	8,377	1,144	1,008	2,152
1975	9,486	962	1,069	2,031
1976	10,848	1,041	1,091	2,132
1977	11,346*	—	—	2,150*

*Estimated

Source: Admissions Office

Freshman Applications and Acceptances* Geographic Distribution 1977-1978

State	Applications	Acceptances*	State	Applications	Acceptances*
Alaska	2	—	Nebraska	12	2
Alabama	2	—	North Carolina	7	2
Arizona	1	—	New Hampshire	135	26
California	47	4	New Jersey	1,076	177
Colorado	5	1	Nevada	2	1
Connecticut	1,261	243	New York	1,748	254
District of Columbia	34	7	Ohio	121	19
Delaware	27	8	Oregon	3	—
Florida	64	10	Pennsylvania	358	58
Georgia	8	1	Puerto Rico	86	25
Hawaii	2	—	Rhode Island	349	69
Illinois	147	33	South Carolina	2	—
Indiana	21	4	Tennessee	8	—
Iowa	4	—	Texas	10	4
Kansas	5	—	Utah	2	—
Kentucky	4	1	Vermont	35	8
Louisiana	7	1	Virginia	47	4
Massachusetts	4,877	1,140	Virgin Islands	1	—
Maryland	154	33	Washington	5	1
Maine	129	37	Wisconsin	45	8
Michigan	43	9	West Virginia	2	—
Minnesota	28	6	Wyoming	2	1
Missouri	29	2	Foreign	335	62
Mississippi	1	—	TOTAL	11,293	2,261

* Based on Deposits Received as of 6-22-77

Source: Admissions Office

SAT Averages by Class

Class	Verbal	Mathematical
1964	521	522
1965	504	539
1966	535	544
1967	544	549
1968	559	574
1969	565	576
1970	556	570
1971	546	567
1972	556	578
1973	549	574
1974	533	554
1975	530	554
1976	528	552
1977	518	554
1978	515	548
1979	504	544
1980	511	550

Source: Admissions Office

ENROLLMENT

Undergraduate Transfer Students by Year and Sex

Fall	Men	Women	Total
1970	60	36	96
1971	88	115	203
1972	177	283	460
1973	146	267	413
1974	251	300	551
1975	163	251	414
1976	240	360	600

by Type of Previous Institution

Fall	2-Year Public	2-Year Private	4-Year Public	4-Year Private	Total
1973	56	70	71	216	413
1974	77	77	82	315	551
1975	41	58	83	232	414
1976	54	48	156	342	600

Source: Admissions Office

**Graduate and Undergraduate Enrollment
Full- and Part-Time**

Year	Undergraduate			Graduate			Total
	F.T.*	P.T.	Total	F.T.	P.T.	Total	
1972-73	7,656	830	8,486	1,907	1,394	3,301	11,787
1973-74	7,774	967	8,741	2,005	1,635	3,640	12,381
1974-75	8,325	893	9,218	1,861	1,670	3,531	12,749
1975-76	8,749	1,095	9,844	1,881	1,820	3,701	13,545
1976-77	8,792	1,107	9,899	1,880	1,833	3,713	13,612

*Includes full time students in Evening College
Source: Registrar

**Undergraduate Day and Evening
and
Graduate Enrollment**

Year	Undergraduate			Graduate/	
	Day	Evening	Total	Professional	Total
1969-70	6,231	984	7,115	3,099	10,214
1970-71	6,663	1,076	7,739	3,217	10,956
1971-72	6,640	1,101	7,741	3,370	11,111
1972-73	7,313	1,173	8,486	3,301	11,787
1973-74	7,543	1,198	8,741	3,640	12,381
1974-75	8,024	1,194	9,218	3,531	12,749
1975-76	8,463	1,381	9,844	3,701	13,545
1976-77	8,486	1,413	9,899	3,713	13,612

Source: Registrar

Undergraduate Enrollment By School

Year	A & S	SOM	Education	Nursing	Evening	Total
1970-71	3,032	1,774	1,268	589	1,076	7,739
1971-72	3,145	1,641	1,284	570	1,101	7,741
1972-73	3,589	1,663	1,344	717	1,173	8,486
1973-74	3,864	1,657	1,266	756	1,198	8,741
1974-75	4,284	1,724	1,263	753	1,194	9,218
1975-76	4,651	1,947	1,150	715	1,381	9,844
1976-77	4,848	1,911	1,021	706	1,413	9,899

Source: Registrar

Graduate Enrollment By School

Year	A&S*	SOM	Social Work	Law	Total
1970-71	2,019	351	206	641	3,217
1971-72	2,107	288	244	731	3,370
1972-73	2,048	317	228	708	3,301
1973-74	2,388	320	244	688	3,640
1974-75	2,245	319	257	710	3,531
1975-76	2,302	398	267	734	3,701
1976-77	2,255	446	258	754	3,713

*Includes Graduate Education and Nursing

Source: Registrar

NOTE: All enrollment statistics are as of 10-20-76.

Graduate Enrollment

By Degree Program and Discipline Full- and Part-Time

	1973-74		1974-75		1975-76		1976-77	
	Masters	Ph.D.	Masters	Ph.D.	Masters	Ph.D.	Masters	Ph.D.
American Studies	24	1	18	—	12	1	17	1
A&S Unspecified	655	29	884	14	863	20	881	15
Biology	37	13	26	15	26	22	35	18
Chemistry	23	23	19	13	21	15	16	16
Classics	4	—	8	—	11	—	7	0
Economics	8	60	4	63	3	64	7	60
Education	814	336	717	312	672	357	660	352
English	81	18	65	12	73	20	67	19
French	37	20	26	16	22	10	26	7
Geology	17	—	12	—	13	—	10	0
Geology-Geophysics	1	1	10	—	15	1	20	1
Geology NSF	36	—	—	—	1	—	—	—
Geophysics	8	—	3	—	8	—	11	0
Germanic Studies	5	14	—	—	1	10	1	1
Greek	2	—	—	—	—	—	2	0
History	30	23	22	12	39	23	34	23
Interdisciplinary	1	—	2	—	1	—	0	3
Italian	—	—	—	—	—	—	3	0
Latin	4	—	4	—	3	—	0	0
Law	709	—	725	—	758	—	767	0
Linguistics	—	—	—	—	1	—	1	0
Management	357	—	418	—	456	—	510	0
Mathematics	25	—	13	—	18	—	14	0
Mathematics NSF	64	—	—	—	2	—	—	—
Nursing	105	1	78	1	77	2	85	1
Philosophy	14	50	18	40	25	50	23	41
Physics	5	23	3	18	7	17	7	13
Political Science	35	16	27	15	25	21	28	28
Psychology	19	30	11	33	13	38	6	39
Russian	9	—	4	—	4	—	4	0
Slavic	1	—	2	0	4	—	2	0
Social Work	251	—	264	—	279	—	266	0
Sociology	34	19	36	18	26	17	28	21
Spanish	20	7	14	10	13	8	17	5
Theology	21	17	10	14	19	16	20	18
Totals*	3,456	701	3,443	606	3,511	712	3,575	682

*Figures include students who attended for just one semester, as well as those who attended a full year.

Source: Registrar

**Undergraduate and Graduate Enrollment
By Sex**

Year	Undergraduate		Graduate/ Professional		Total		Total Enrollment
	Men	Women	Men	Women	Men	Women	
1967-68	5,191	1,784	1,865	898	7,056	2,682	9,739
1968-69	5,129	1,879	1,880	1,084	7,009	2,963	9,972
1969-70	5,205	1,910	1,974	1,125	7,179	3,035	10,214
1970-71	5,311	2,428	1,983	1,234	7,294	3,662	10,956
1971-72	5,019	2,722	2,029	1,341	7,048	4,063	11,111
1972-73	4,945	3,541	1,975	1,326	6,920	4,867	11,787
1973-74	4,700	4,041	2,022	1,618	6,722	5,659	12,381
1974-75	4,745	4,473	1,831	1,700	6,576	6,173	12,749
1975-76	4,779	5,065	1,908	1,793	6,687	6,858	13,545
1976-77	4,695	5,204	1,867	1,846	6,562	7,050	13,612

Source: Registrar

Full-Time Equivalent Enrollment*

Year	Undergraduate			Graduate/ Professional	Total
	Day	Evening	Total		
1969-70	6,170	480	6,650	2,324	8,974
1970-71	6,589	491	7,080	2,464	9,544
1971-72	6,611	638	7,249	2,545	9,794
1972-73	7,296	637	7,933	2,378	10,311
1973-74	7,518	578	8,096	2,550	10,646
1974-75	8,008	614	8,622	2,418	11,040
1975-76	8,463	651	9,114	2,486	11,600
1976-77	8,486	675	9,161	2,491	11,652

*Method of computation: three part-time students equals one Full-time Equivalent Student.

Source: Registrar

Evening College Enrollment

Year	First Semester			Second Semester		
	Men	Women	Total	Men	Women	Total
1974-75	534	660	1,194	475	539	1,014
1975-76	607	774	1,381	490	604	1,094
1976-77	585	828	1,413	507	659	1,166

Source: Registrar

Summer Session Enrollment

Summer	Regular Session			Workshops and Institutes	Total
	Undergraduate	Graduate/ Professional	Total		
1967	1,270	1,113	2,383	870	3,253
1968	1,251	1,161	2,412	1,033	3,445
1969	1,028	1,592	2,620	1,451	4,071
1970	691	1,434	2,125	679	2,804
1971	676	1,149	1,825	508	2,333
1972	607	1,077	1,684	446	2,130
1973	622	1,155	1,777	623	2,400
1974	692	1,116	1,808	714	2,522
1975	889	1,107	1,996	769	2,765
1976	887	1,062	1,949	670	2,619
1977	898	1,026	1,924	688	2,612

Source: Summer Session Office

Geographic Distribution of Students*

	Undergrad	Evening	Grad. A&S	Social Work	Grad. SOM	Law School	Total
Alaska	1						1
Alabama	2	1	1				4
Arkansas						2	2
Arizona	2		2			1	5
California	31		12	2	2	16	63
Colorado	1		2				3
Connecticut	868	13	42	6	9	26	964
Dist. of Columbia	32		3		1	1	37
Delaware	15		1		1		17
Florida	62	5	5	1	1	6	80
Georgia	8	2	4			3	17
Hawaii			2			1	3
Iowa	5		3			1	9
Idaho						2	2
Illinois	109		10			6	125
Indiana	13		3			4	20
Kansas	2		2			1	5
Kentucky	2		2			1	5
Louisiana	11		2				13
Massachusetts	4,374	1,346	1,780	202	378	452	8,532
Maryland	86	1	9	2	2	3	103
Maine	61	4	11	8	2	6	92
Michigan	46	2	6			9	63
Minnesota	15		2			1	18
Missouri	14	2	1		1	2	20
Mississippi	1		1				2
Montana			1				1
Nebraska	1	1					2
North Carolina	4		6	1		2	13
New Hampshire	113	1	40	1	10	18	183
New Jersey	732	13	35	3	9	26	818
New Mexico			1			2	3
Nevada	1						1
New York	1112	7	88	6	14	94	1,321
Ohio	74	3	8	1	1	8	95
Oklahoma	4						4
Oregon		1	1			1	3
Pennsylvania	248	2	33	5	3	17	308
Puerto Rico	41	1	3		1	5	51
Rhode Island	256	2	60	14	4	20	356
So. Carolina	2		1				3
So. Dakota	1					2	3
Tennessee	4		2			2	8
Texas	11		3		1	2	17
Virginia	23		14		1	2	40
Virgin Islands	3						3
Vermont	11		5	1		3	23
Washington	5						5
Wisconsin	21		3			4	28
West Virginia	2		3	1			6
Wyoming	1						1
Foreign	55	6	42	4	2	2	111
Totals	8,486	1,413	2,255	258	446	754	13,612

*These figures are based on the state which the student lists as a permanent address, which may not necessarily reflect the true "home" state.

Source: Registrar

**International Student Enrollment
1976-77**

Summary

Undergraduate	
A.B. candidates	37
B.S. candidates	37
	<hr/>
Graduate	
Doctoral	58
Masters	47
Special Non-degree	2
	<hr/>
Practical Training (Field Work)	9
	<hr/>
Total International Enrollment	190

Source: Office of Student Activities

By School

College of Arts & Sciences	41
School of Education	2
School of Nursing	2
Evening College	5
School of Management	25
Graduate A & S	83
Graduate School of Social Work	6
Graduate School of Management	13
Law School	2
Special Non-degree	2
Practical Training (Field Work)	9
	<hr/>
Total	190

By Country

Country	Men	Women	Total	Country	Men	Women	Total
Algeria	1	1	2	Jamaica	1	1	2
Aruba	0	1	1	Japan	6	5	11
Australia	3	1	4	Korea	1	0	1
Austria	0	1	1	Lebanon	2	0	2
Bahamas	0	1	1	Lesotho	1	0	1
Bangladesh	1	0	1	Liberia	0	1	1
Bermuda	1	0	1	Libya	1	0	1
Brazil	1	3	4	Mexico	3	1	4
Canada	10	9	19	Morocco	2	0	2
Chile	1	0	1	Netherlands	1	2	3
Colombia	2	1	3	Nicaragua	0	5	5
Cyprus	1	0	1	Nigeria	4	1	5
Dominica	2	0	2	Norway	1	0	1
Dominican Republic	1	1	2	Pakistan	0	1	1
Ecuador	4	1	5	Panama	1	0	1
Egypt	0	1	1	Peru	1	1	2
El Salvador	1	0	1	Philippines	1	2	3
Ethiopia	4	0	4	Sierre Leone	1	0	1
France	3	0	3	Somalia	1	0	1
Ghana	2	0	2	Spain	1	1	2
Great Britain	1	1	2	Sri Lanka	0	1	1
Greece	1	3	4	Sweden	0	1	1
Hong Kong	3	10	13	Taiwan	5	4	9
India	8	0	8	Thailand	5	5	10
Iran	4	5	9	Trinidad	1	1	2
Ireland	7	3	10	Venezuela	3	1	4
Israel	1	2	3	Zaire	0	1	1
Italy	3	1	4	Totals	109	81	190

Source: Office of Student Activities

**Undergraduate and Graduate
Minority Enrollment**

	1973-74			1974-75			1975-76			1976-77		
	Men	Women	Total	Men	Women	Total	Men	Women	Total	Men	Women	Total
Undergraduate												
Black	116	127	243	148	194	342	123	184	307	155	206	361
American Indian	5	3	8	2	2	4	1	3	4	1	4	5
Oriental	32	32	64	23	27	50	23	27	50	33	45	78
Hispanic	20	12	32	33	24	57	33	32	65	38	35	73
Other	23	13	36	25	14	39	15	14	29	19	23	42
	<u>196</u>	<u>187</u>	<u>383</u>	<u>231</u>	<u>261</u>	<u>492</u>	<u>195</u>	<u>260</u>	<u>455</u>	<u>246</u>	<u>313</u>	<u>559</u>
Graduate												
Black	11	41	52	32	54	86	36	71	107	36	73	109
American Indian	2	5	7		4	4	3	2	5	2	0	2
Oriental	10	19	29	17	31	48	21	34	55	20	36	56
Hispanic	1	7	8	6	5	11	12	6	18	16	16	32
Other	8	28	36	4	15	19	2	11	13	2	11	13
	<u>32</u>	<u>100</u>	<u>132</u>	<u>59</u>	<u>109</u>	<u>168</u>	<u>74</u>	<u>124</u>	<u>198</u>	<u>76</u>	<u>136</u>	<u>212</u>
Total Graduate and Undergraduate	<u>228</u>	<u>287</u>	<u>515</u>	<u>290</u>	<u>370</u>	<u>660</u>	<u>269</u>	<u>384</u>	<u>653</u>	<u>322</u>	<u>449</u>	<u>771</u>

Source: Registrar

Veterans Enrolled at Boston College 1976-77

School	Men	Women	Full-Time	Part-Time	Total
Arts and Sciences	123	68	191		191
Education	10	26	36		36
Evening College	50	3	36	17	53
Nursing	5	27	32		32
Management	55	16	71		71
Graduate School of A & S	44	11	29	26	55
Graduate SOM	36	2	10	28	38
Law School	29	4	33		33
Social Work	7	1	7	1	8
Total	<u>359</u>	<u>158</u>	<u>445</u>	<u>72</u>	<u>517</u>
		517		517	

Source: Registrar

**Undergraduate Degrees Conferred*
By Degree and Number of Majors**

Arts and Sciences	1973-74	1974-75	1975-76	1976-77
A. B.				
Single Major	543	559	687	613
Double Major	231	212	242	239
Triple Major	<u>2</u>	<u>3</u>	<u>5</u>	<u>3</u>
	776	774	934	855
B.S.				
Single Major	130	116	136	146
Double Major	<u>26</u>	<u>31</u>	<u>47</u>	<u>54</u>
	156	147	183	200
Total A&S	932	921	1,117	1,055
School of Education-A.B.				
Single Major	289	284	334	273
Double Major	17	17	23	27
Triple Major	<u>4</u>	<u>—</u>	<u>1</u>	<u>2</u>
	310	301	358	302
School of Management-B.S				
Single Major	326	273	430	413
Double Major	<u>44</u>	<u>36</u>	<u>62</u>	<u>60</u>
	370	309	492	473
School of Nursing-B.S.	164	205	225	168
Subtotal-Undergraduate Degrees	<u>1,776</u>	<u>1,736</u>	<u>2,192</u>	<u>1,998</u>
Evening College				
A.B.	—	71	74	63
B.S.	—	20	12	2
A.A.	—	—	1	—
	<u>—</u>	<u>91</u>	<u>87</u>	<u>65</u>
Total Undergraduate Degrees Conferred	1,776	1,827	2,279	2,063

*Sept.-Jan.-June

Source: Registrar

**Undergraduate Degrees Conferred
By Major***

	1973-74	1974-75	1975-76	1976-77
Accounting	117	115	202	190
Administrative Science	—	1	—	—
American Studies	—	—	3	—
Art History	5	19	17	14
Biology	124	116	136	151
Chemistry	18	18	34	32
Classics	2	6	1	5
Computer Science	11	18	19	12
Deaf/Blind	6	16	15	—
Earth Science	—	1	—	—
Economics	130	128	118	89
English	185	177	154	157
Elementary Education	93	103	99	84
Finance	63	54	68	64
Fine Arts	—	—	1	—
French	3	15	7	18
General Business	22	—	—	—
General Management	—	16	—	—
Geology	11	4	7	13
Geophysics	—	—	1	—
German	—	3	4	4
History	73	54	77	77
Independent	1	—	4	3
Italian	—	1	1	—
Linguistics	1	2	—	1
Management	19	3	33	34
Marketing	89	79	139	161
Mathematics	46	26	46	39
Modern Languages	—	—	1	—
Nursing	164	205	225	168
Operations Management	2	2	2	2
Philosophy	52	52	45	35
Physics	4	8	4	5
Political Science	121	115	177	161
Production Management	7	4	1	—
Production & Operations Mgmt.	4	—	—	—
Psychology	122	104	141	120
Romance Languages	6	8	3	1
Russian	3	—	6	4
Secondary Education	93	59	50	47
Slavic Studies	—	—	1	1
Sociology	61	62	123	88
Spanish	1	8	13	13
Special Education/Elem. Ed.**	106	116	176	160
Speech Communication	2	5	15	26
Speech Theatre	5	5	4	3
Studio Art	—	—	8	9
Theology	3	8	10	7
TOTALS	1,776	1,736	2,192	1,998

*Double and Triple majors counted by first majors.

**Elem. Ed. majors with concentration in Special Ed.

Source: Registrar

Undergraduate Degrees Conferred By School and by Major

	1975						1976						1977					
	A. & S.		Ed.	SOM	Nurs.	TOT.	A. & S.		Ed.	SOM	Nurs.	TOT.	A. & S.		Ed.	SOM	Nurs.	TOT.
	A.B.	B.S.	B.A.	B.S.	B.S.	TOT.	A.B.	B.S.	B.A.	B.S.	B.S.	TOT.	A.B.	B.S.	B.A.	B.S.	B.S.	TOT.
Accounting				115		115				202		202				190		190
Admin. Science				1		1												
American Studies							3					3						
Art History	19					19	17					17	14					14
Biology		116				116		135	1			136		151				151
Chemistry		18				18		34				34		31	1			32
Classics	6					6	1					1	5					5
Computer Science				18	18				19		19					12		12
Deaf/Blind			16			16			15			15						
Earth Science		1				1												
Economics	111			17		128	90			28		118	79			10		89
English	173		4			177	147			7		154	157					157
Elementary Ed.			103			103			99			99			84			84
Finance				54		54				68		68			64			64
Fine Arts							1					1						
French	15					15	7					7	18					18
General Management				16		16								13				13
Geology		4				4		7				7						
Geophysics								1				1	3		1			4
German	3					3	4					4	75		2			77
History	54					54	77					77						
Independent							2	2				4	3					3
Italian	1					1	1					1						
Linguistics	2					2							1					1
Management				3		3				33		33				34		34
Marketing				79		79				139		139				161		161
Mathematics	26					26	44		2			46	37		2			39
Modern Languages							1					1						
Nursing					205	205					225	225					168	168
Operations Mgmt.				2		2				2		2			2			2
Philosophy	51		1			52	45					45	35					35
Physics						8		4				4		5				5
Political Science	115					115	177					177	161					161
Production Mgmt.				4		4				1		1						
Psychology	104					104	141		1			142	120					120
Romance Languages	8					8	3					3						
Russian							6					6						
Secondary Education			59			59			50			50						
Slavic Studies							1					1	1					1
Sociology	62					62	118		5			123	85		3			88
Spanish	7		1			8	13					13	13					13
Special Education			116			116			176			176			160			160
Speech Communication	5					5	14		1			15	24		2			26
Speech Theatre	4		1			5	3		1			4	3					3
Studio Art							8					8	9					9
Theology	8					8	10					10	7					7
TOTALS	774	147	301	309	205	1,736	934	183	358	492	225	2,192	855	200	302	473	168	1998

Source: Registrar

**Undergraduate and Graduate Degrees Conferred*
By Degree and by Sex**

	1973-74			1974-75			1975-76			1976-77		
	Men	Women	Total	Men	Women	Total	Men	Women	Total	Men	Women	Total
Undergraduate												
College of A. & S.												
A.B.	525	251	776	461	313	774	469	465	934	402	453	855
B.S.	130	26	156	103	44	147	123	60	183	138	62	200
Total A. & S.	<u>655</u>	<u>277</u>	<u>932</u>	<u>564</u>	<u>357</u>	<u>921</u>	<u>592</u>	<u>525</u>	<u>1,117</u>	<u>540</u>	<u>515</u>	<u>1055</u>
School of Ed.-A.B.	72	238	310	62	239	301	59	299	358	39	263	302
School of Nursing-B.S.	2	162	164	2	203	205	5	220	225	1	167	168
School of Mgmt.-B.S.	346	24	370	280	29	309	421	71	492	368	105	473
	<u>420</u>	<u>424</u>	<u>844</u>	<u>344</u>	<u>471</u>	<u>815</u>	<u>485</u>	<u>590</u>	<u>1,075</u>	<u>408</u>	<u>535</u>	<u>943</u>
Subtotal Undergraduate	1,075	701	1,776	908	828	1,736	1,077	1,115	2,192	948	1050	1998
A.B.	—**	—	—	37	34	71	41	33	74	36	27	63
Evening College-B.S.	—	—	—	19	1	20	11	1	12	2	0	2
A.A.	—	—	—	—	—	—	—	1	1	—	—	—
	<u>—</u>	<u>—</u>	<u>—</u>	<u>56</u>	<u>35</u>	<u>91</u>	<u>52</u>	<u>35</u>	<u>87</u>	<u>38</u>	<u>27</u>	<u>65</u>
Total Undergraduate Degrees Conferred	1,075	701	1,776	964	863	1,827	1,129	1,150	2,279	986	1,077	2,063
 Graduate***												
Ph.D.	49	31	80	52	23	75	52	23	75	53	33	86
D.Ed.	3	—	3	3	1	4	13	2	15	11	1	12
M.A.	79	84	163	77	72	149	64	53	117	62	64	126
M.S.	12	70	82	19	67	86	9	65	74	24	77	101
M.Ed.	79	241	320	98	299	397	106	309	415	97	230	327
M.A.T.	6	12	18	8	13	21	10	17	27	6	7	13
M.S.T.	11	6	17	10	8	18	2	1	3	9	2	11
J.D.	206	43	249	160	46	206	166	66	232	169	76	245
M.B.A.	84	8	92	82	8	90	73	13	86	66	33	99
M.S.P.	9	15	24	7	10	17	7	8	15	9	18	27
M.S.W.	21	51	72	24	62	86	34	61	94	19	70	89
C.A.E.S.	13	6	19	15	18	33	11	21	32	5	18	23
	<u>—</u>	<u>—</u>	<u>—</u>	<u>—</u>	<u>—</u>	<u>—</u>	<u>—</u>	<u>—</u>	<u>—</u>	<u>—</u>	<u>—</u>	<u>—</u>
Total Graduate Degrees Conferred	572	567	1,139	555	627	1,182	547	639	1,185	530	629	1,159
Total Undergraduate Degrees Conferred	<u>1,075</u>	<u>701</u>	<u>1,776</u>	<u>964</u>	<u>864</u>	<u>1,827</u>	<u>1,129</u>	<u>1,150</u>	<u>2,279</u>	<u>986</u>	<u>1,077</u>	<u>2,063</u>
Total Undergraduate & Graduate Degrees	1,647	1,268	2,915	1,519	1,490	3,009	1,676	1,789	3,464	1,516	1,706	3,222

*Sept.-Jan.-June

**Not available

***See page 63 "Degrees Conferred by Boston College"

Source: Registrar

**Undergraduate and Graduate Financial Aid
1971-77
(Thousands of dollars)**

Type of Aid — Undergraduate.	1971-72	1972-73	1973-74	1974-75	1975-76	1976-77 ^{3/}
University Scholarships and grants	\$1,190	\$1,137	\$1,194	\$1,305	\$1,424	\$1,430
State Scholarships ^{1/}	895	827	868	793	870	800
Basic Educational Opportunity Grant	NA	NA	35	243	717	1,100
Supplemental Educational Opportunity Grant	548	525	505	513	564	510
Work-Study	550	820	1,179	908	1,630	1,210
N.D.S.L.	<u>1,342</u>	<u>1,653</u>	<u>1,603</u>	<u>1,738</u>	<u>2,203</u>	<u>2,320</u>
Subtotal	\$4,525	14,962	\$5,384	\$5,500	\$7,408	\$7,370
Other ^{2/}	<u>996</u>	<u>1,141</u>	<u>1,136</u>	<u>1,167</u>	<u>1,112</u>	<u>1,180</u>
Undergraduate Total	\$5,521	\$6,103	\$6,520	\$6,667	\$8,520	\$8,550
Type of Aid — Graduate						
Work-Study	NA*	—	—	—	470	340
N.D.S.L.	NA	—	—	—	<u>514</u>	<u>670</u>
Total Undergraduate and Graduate	NA	—	—	—	\$9,504	\$9,560

*NA - Not available

¹ State scholarship funds to students from Massachusetts, Vermont, Connecticut, New Jersey, Pennsylvania, Rhode Island.

² Includes Black Talent and athletic programs

³ Estimated

Source: Director of Financial Aid

**Undergraduate and Graduate Financial Aid
1971-77
Number of Students**

Type of Aid — Undergrad.	Number of Students					
	1971-72	1972-73	1973-74	1974-75	1975-76	1976-77 ⁴
University Scholarships and grants ^{1/}	1,068	1,262	1,542	1,563	1,670	1,700
State Scholarships	1,069	960	1,016	941	1,023	950
Basic Educational Opportunity Grant	NA	NA	133	388	773	1,200
Supplemental Educational Opportunity Grant	623	564	535	549	768	680
Work-Study	627	898	1,019	884	1,317	1,170
N.D.S.L.	<u>1,445</u>	<u>1,629</u>	<u>1,638</u>	<u>1,719</u>	<u>2,091</u>	<u>2,250</u>
Subtotal ^{2/}	4,832	5,313	5,883	6,044	7,642	7,950
Other	<u>344</u>	<u>354</u>	<u>386</u>	<u>387</u>	<u>406</u>	<u>410</u>
Undergraduate TOTAL ^{3/}	5,176	5,667	6,269	6,431	8,048	8,360
Type of Aid — Graduate						
Work-Study	NA*	—	—	—	414	370
N.D.S.L.	NA	—	—	—	<u>303</u>	<u>380</u>
Total Undergraduate ^{3/} and Graduate	NA	—	—	—	8,765	9,110

NA - Not Available

1/ State scholarship funds to students from Massachusetts, Vermont, Connecticut, New Jersey, Pennsylvania, Rhode Island.

2/ Includes Black Talent and athletic programs

3/ This is not an unduplicated total since some students receive more than one type of aid

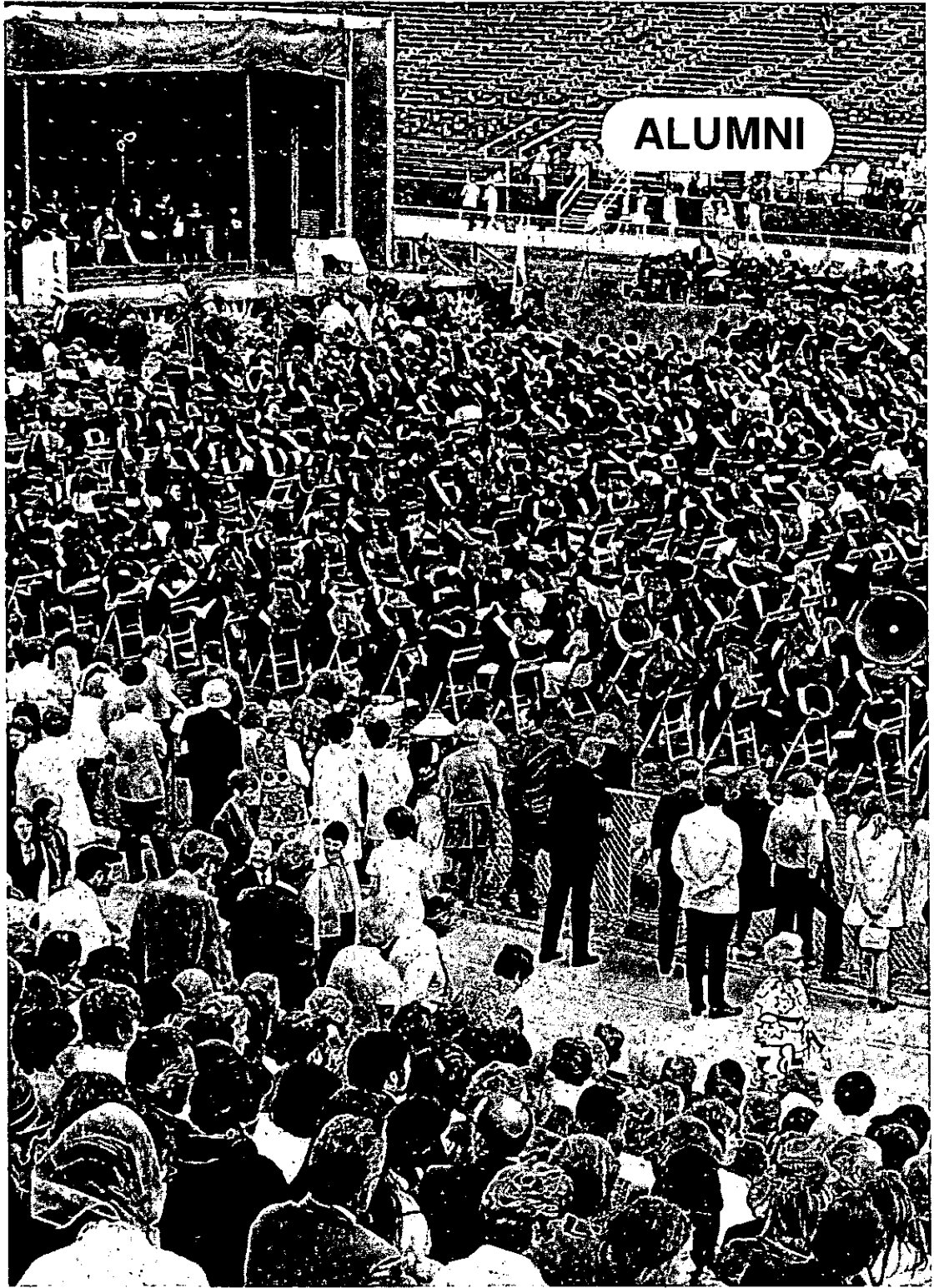
4/ Estimated

Source: Director of Financial Aid

Health Services

Number of Students Served					
Grand Totals	1972-73	1973-74	1974-75	1975-76	1976-77
Total Visits to M.D.	16,490	18,299	19,488	19,123	18,718
Total Visits to R.N.	<u>9,645</u>	<u>7,763</u>	<u>9,879</u>	<u>10,671</u>	<u>10,143</u>
Totals	26,135	26,062	29,367	29,794	28,861
Men				(14,639)	(13,830)
Women				(15,155)	(15,031)
Infirmery*					
Total Admissions	567	485	637	604	633
Men	(335)	(255)	(226)	(266)	(280)
Women	(232)	(230)	(411)	(338)	(353)
Total Patient Days	1,370	1,130	1,329	1,367	1,382
Average Daily Census	5.5	5.4	6.1	6.2	6.5
Average Length of Stay (days)	2.3	2.3	2.1	2.2	2.2
Number of Days in Full Operation	237	209	216	219	211

*Included in Grand Totals
Source: Health Services Office



Alumni in New England

Metropolitan Boston	
Postal Areas 01701-02009	7,902
02101-02215	<u>17,011</u>
	24,913
Massachusetts outside	
Metropolitan Boston	<u>9,935</u>
Total Massachusetts Alumni	<u>34,848</u>
New England	
Connecticut	3,121
Maine	676
New Hampshire	1,187
Rhode Island	1,370
Vermont	<u>258</u>
Total New England outside Massachusetts	6,612
Massachusetts	<u>34,848</u>
Total New England	41,460
Total outside New England	<u>16,259</u>
TOTAL ACTIVE ALUMNI	57,719

Source: Boston College Alumni Association

Alumni Geographic Analysis by State

Alabama	60	New Hampshire	1,186
Alaska	22	New Jersey	1,973
Arizona	114	New Mexico	41
Arkansas	8	New York	4,217
California	1,224	North Carolina	164
Colorado	153	North Dakota	9
Connecticut	3,121	Ohio	622
Delaware	94	Oklahoma	40
District of Columbia	382	Oregon	52
Florida	641	Pennsylvania	917
Georgia	165	Puerto Rico	103
Hawaii	43	Rhode Island	1,370
Idaho	12	South Carolina	60
Illinois	653	South Dakota	17
Indiana	136	Tennessee	83
Iowa	43	Texas	260
Kansas	51	Utah	18
Kentucky	89	Vermont	258
Louisiana	80	Virginia	834
Maine	676	Virgin Islands	19
Maryland	960	Washington	128
Massachusetts	34,848	West Virginia	36
Michigan	360	Wisconsin	179
Minnesota	138	Wyoming	8
Mississippi	14	Total U.S.	56,924
Missouri	176	Inactive	3,358
Montana	21	Lost	6,014
Nebraska	28	Total Active Alumni	57,729
Nevada	18	Total Alumni	67,091

Source: Boston College Alumni Association

Boston College Alumni Clubs

Boston	New Hampshire
Buffalo	New Jersey
Cape Cod	New Orleans
Central New York	Northern California (San Francisco)
Chicago	Pittsburgh
Cincinnati	Philadelphia
Cleveland	Rhode Island
Denver	Rochester
Detroit	St. Louis
Fairfield County	San Diego
Florida	Seattle
Hartford	Southeastern United States (Georgia)
Long Island	Toledo
North Shore	Washington, D.C.
Maine	Western Massachusetts (Springfield)
Manhattan Business Group	Wisconsin
Merrimack Valley	Worcester
Mid-Hudson	
Minnesota	
New Bedford	

Source: Boston College Alumni Association

Boston College Alumni Activities

Alumni Admissions	Anniversary Class Gift Program
Counselling	Regional Telethons
Alumni Resources for Current	Fides
Students:	Businessmen for Boston College
Career Counselling	Estate Planning Council
Guest Lecturing	Parents' Committee
Student Internships	Foundations
Summer Employment for Students	Nominations and Elections
Women's Resources	Placement Services
The Alumni Seminar Series	Publications & Communications:
Awards:	Class Notes for bridge
Nominations-McKenney Award	Social Activities:
Nominations-Alumni Awards of Excellence	Family Day
The Boston College Clubs	Homecoming
Class Organizations & Activities	Fall Football Tour
Continuing Education	Holy Cross Pre-Game Brunch
Development:	Laetare Sunday Communion
New Heights Capital Campaign	Breakfast
The Annual Fund	Alumni Golf Tournament
National Telethon	Spring European Tour
	Alumni Weekend

Source: Boston College Alumni Association

New Heights Campaign Leadership

General Chairman

James P. O'Neill, '42
Executive Vice President
Xerox Corporation

Alumni Chairman

Robert J. O'Keefe, '51
Senior Vice President
Chase Manhattan Bank

Special Gifts Chairman

Samuel T. Church, '43
Executive Vice President
Hospital Laundry Associates

Annual Gifts and Telethon Chairman

Edward A. Zmijewski, '54
C.P.A.
General Accounting Office

Foundations Chairman

John Lowell
Partner
Welch and Forbes

Corporations Chairman-New England

Thomas A. Sampson, '50
Executive Vice President
R. J. Reynolds Industries, Inc.

Theater Chairman

John M. Cataldo, '41
President
National Freight Traffic Services

Blue Chips Chairman

Alfred W. Branca, M.D., '39

Doctors' Committee Chairman

James F. McDonough, M.D., '35, D.Sc. '77 (Hon.)

Corporations Chairman-National

Joseph F. Abely, Jr., '50
Executive Vice President
R. J. Reynolds Industries, Inc.

Bequests and Planned Giving Chairman

John G. McElwee, '43, J.D. '50
Executive Vice President and Secretary
John Hancock Mutual Life Insurance Co.

Law School National Chairman

Thomas M. Joyce, J.D. '41
Attorney
Joyce, Capeless, Kilroy, McNulty & Roddy

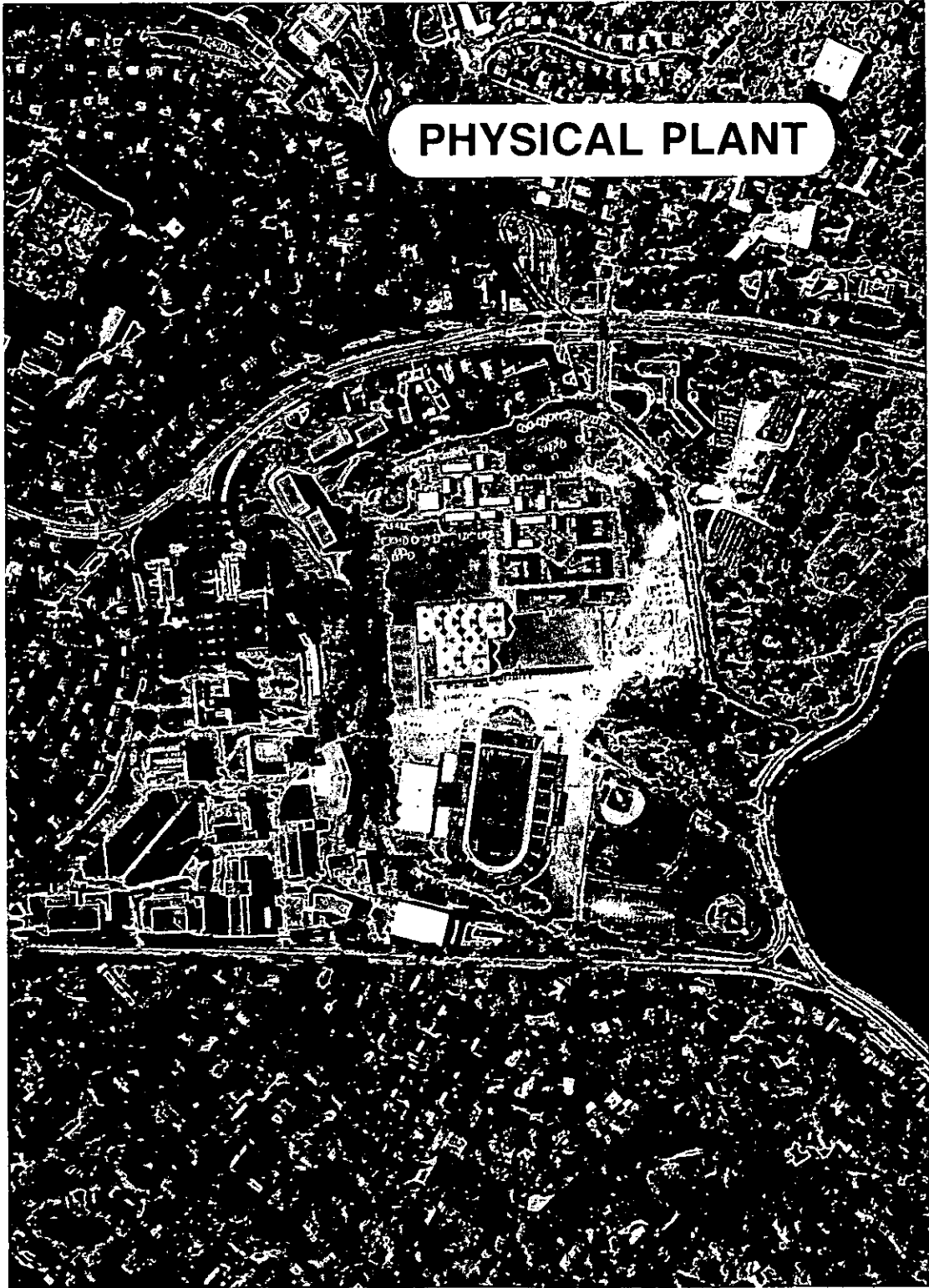
Executive Vice Chairman

Robert T. Capeless, J.D. '41
Attorney
Joyce, Capeless, Kilroy, McNulty & Roddy

Communications Chairman

John M. Connors, Jr., '63
President
Hill, Holliday, Connors & Cosmopolous

PHYSICAL PLANT

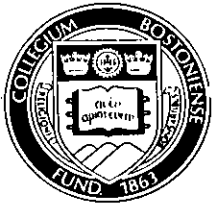


Boston College Properties

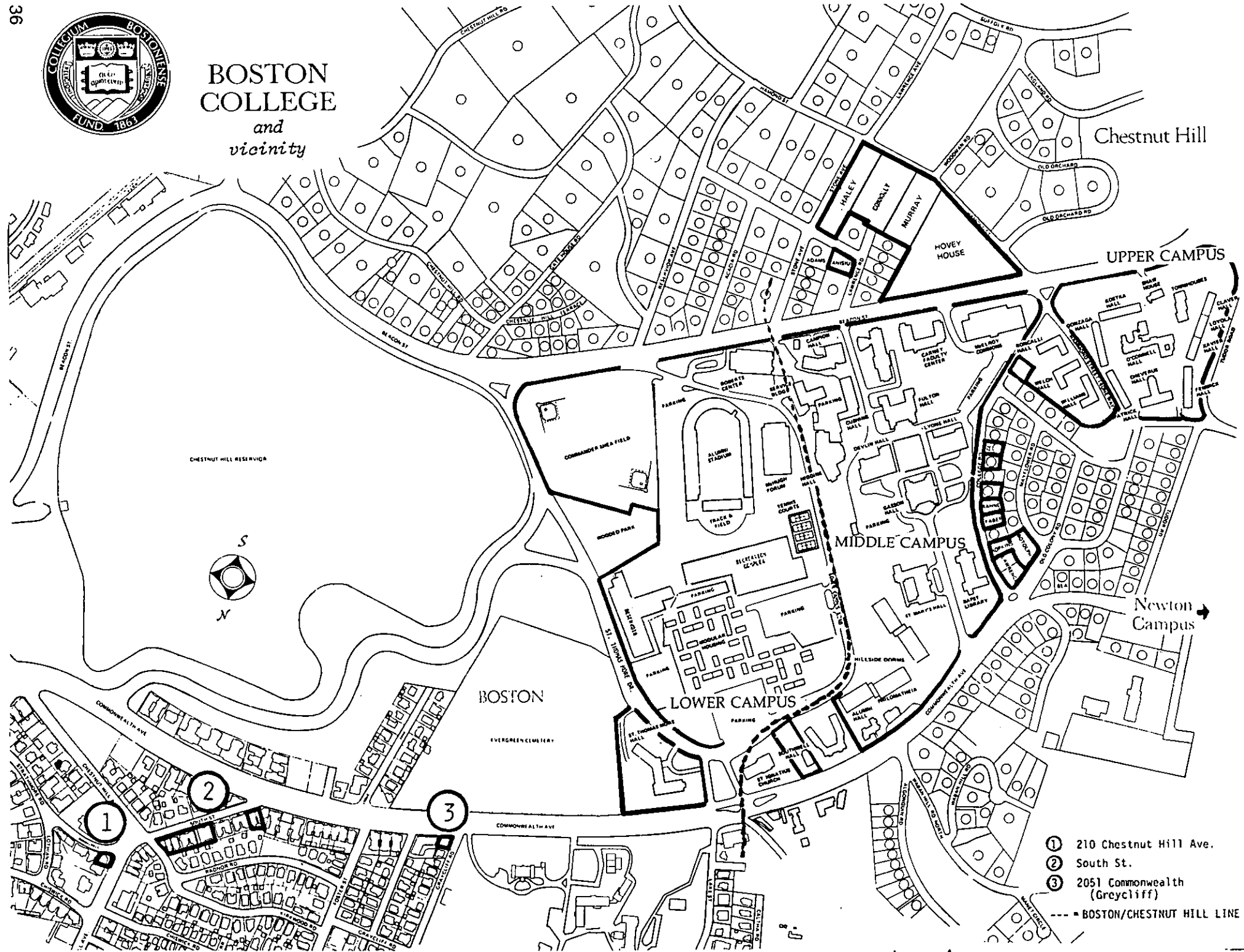
	Square Feet	Acres	
UPPER CAMPUS			
Roncalli-Welch-Williams	137,446	3.1	
O'Connell & Upper Dorms	472,838	10.9	
Total Upper Campus	610,284		14.0
MIDDLE CAMPUS			
Area bounded by Beacon St., Lower Campus Rd., College Rd., Commonwealth Avenue - including Hillside, Alumni, Philomatheia, Southwell			
18 Old Colony Rd. (Botolph)	1,677,845	38.5	
122 College Rd. (Lawrence)*	17,346	.4	
116 College Rd. (Hopkins)	18,333	.4	
102 College Rd. (Faber)	7,349	.2	
96 College Rd. (Rahner)	7,191	.2	
90 College Rd.	7,191	.2	
78 College Rd. (Brock)	6,463	.1	
72 College Rd.	7,960	.2	
36 College Rd.	6,308	.1	
176 Commonwealth (Bea)	7,100	.2	
Total Middle Campus	8,598	.2	
	1,773,619		40.7
LOWER CAMPUS			
Area bounded by Lower Campus Rd., Beacon St., & St. Thos. More Dr. (excluding MDC property)			
2150 Commonwealth Ave. (St. Thomas More Hall)	2,279,266	52.3	
Total Lower Campus	156,575	3.6	
Total Upper, Middle & Lower Campuses	2,435,841		55.9
	4,819,744	110.6	
NEWTON CAMPUS			
Total Chestnut Hill & Newton Campuses	1,751,112	40.2	
	6,570,856		150.8
OUTLYING PROPERTIES			
Newton:			
258 Beacon St. (Hovey)	178,390	4.1	
292 Hammond St. (Murray)	50,554	1.2	
300 Hammond St. (Connolly)	70,767	1.6	
314 Hammond St. (Haley)	55,710	1.3	
67 Lee Rd. (Canisius)	10,436	.2	
	365,857		8.4
Boston:			
210 Chestnut Hill Ave. (Chestnut)	4,833	.1	
2051 Commonwealth (Greycliff)	8,734	.2	
5 South St. (Linden)	2,407	.1	
9 South St. (Radnor)	3,164	.1	
15 South St. (Pine)	3,759	.1	
19 South St. (Kirkwood)	9,365	.2	
25 South St. (Phelps)	9,288	.2	
39-41 South St. (South)	7,760	.2	
	49,310		1.2
TOTAL PROPERTIES OWNED BY BOSTON COLLEGE	6,986,023	160.4	

*Two plots

Sources: *Engineering Dept., City of Newton*
Assessing Engineering Dept., City of Boston



BOSTON COLLEGE and vicinity



Chestnut Hill

UPPER CAMPUS

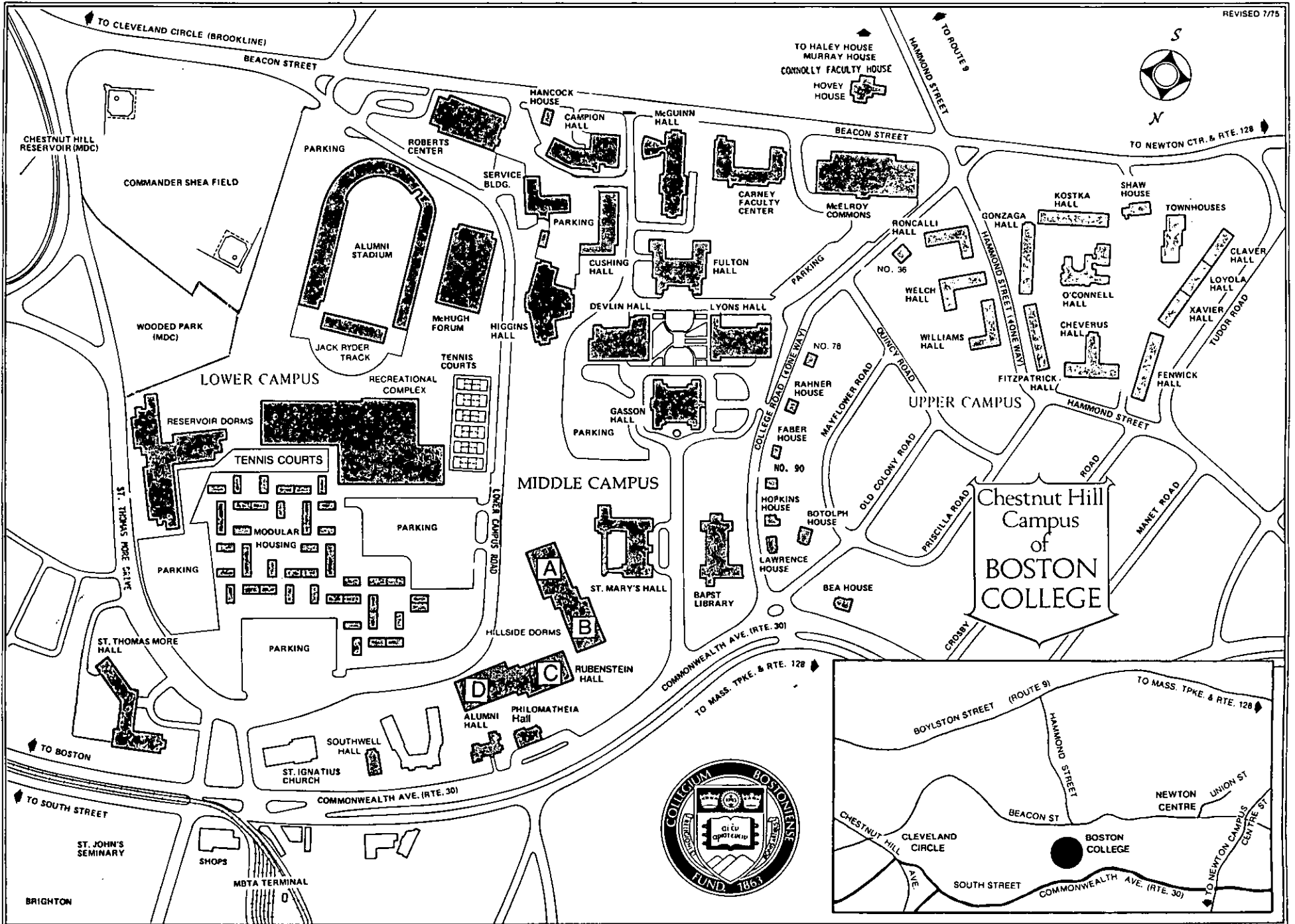
MIDDLE CAMPUS

Newton Campus

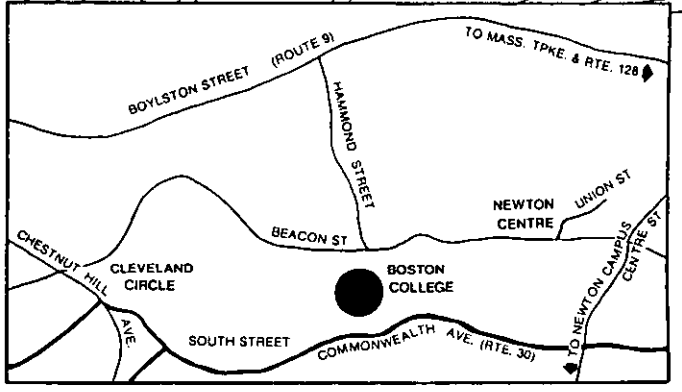
LOWER CAMPUS

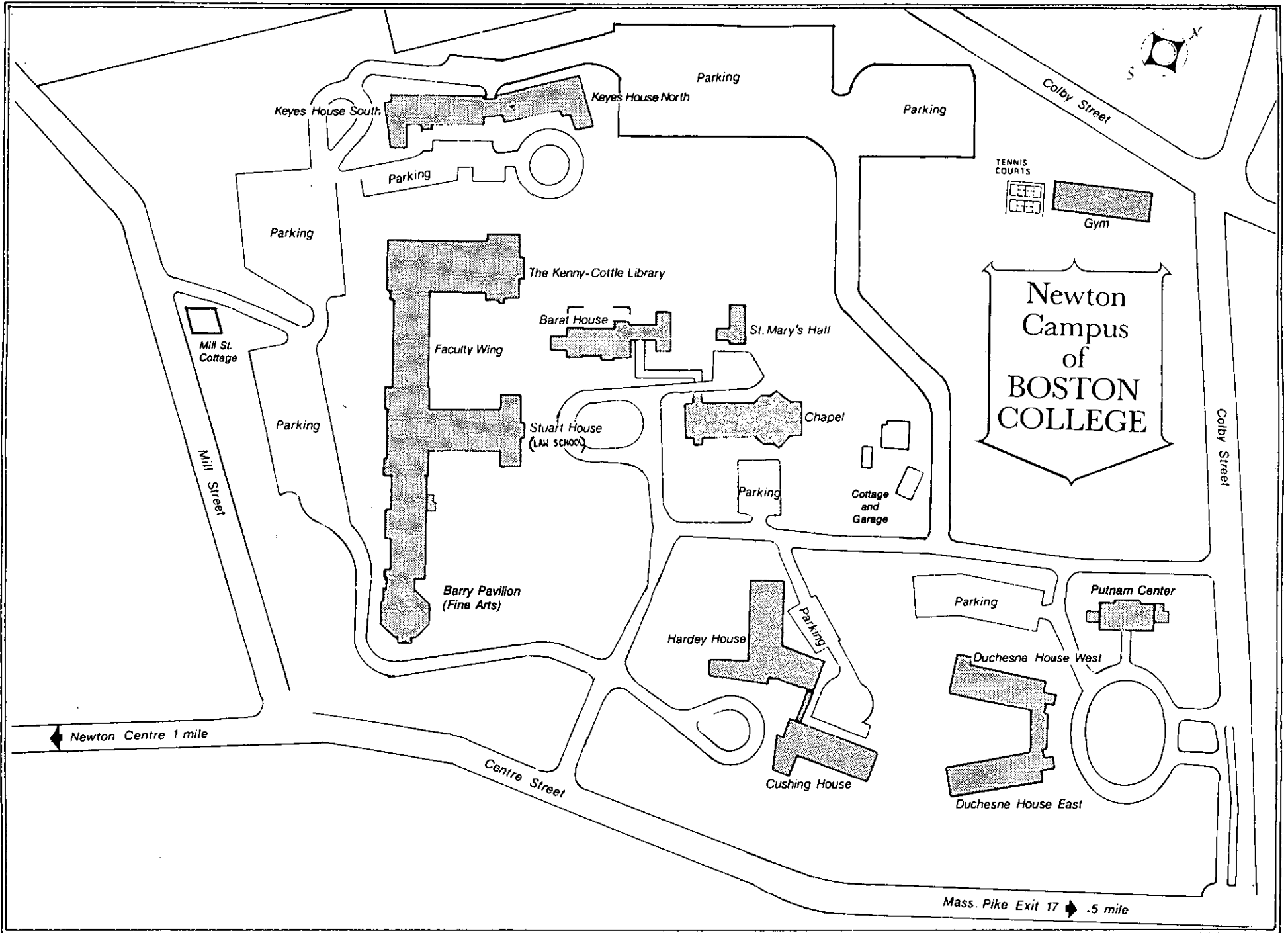
BOSTON

- ① 210 Chestnut Hill Ave.
- ② South St.
- ③ 2051 Commonwealth (Greycliff)
- BOSTON/CHESTNUT HILL LINE



Chestnut Hill
Campus
of
BOSTON COLLEGE





Newton
Campus
of
BOSTON
COLLEGE

TENNIS
COURTS

Gym

Newton
Campus
of
BOSTON
COLLEGE

Cottage
and
Garage

Putnam Center

Parking

Duchesne House West

Duchesne House East

Hardey House

Cushing House

Stuart House
(LAW SCHOOL)

Chapel

Parking

Parking

Barat House

St. Mary's Hall

Faculty Wing

The Kenny-Cottle Library

Parking

Mill St.
Cottage

Parking

Barry Pavilion
(Fine Arts)

Parking

Keyes House North

Keyes House South

Parking

Parking

Colby Street

Mill Street

Colby Street

Centre Street

Mass. Pike Exit 17 .5 mile

Newton Centre 1 mile

Summary of Building Use

Building Use	Number of Buildings	Percent of Total
Student Residences	31	40%
Administrative ¹	11	14
Administrative & Academic ²	14	18
Jesuit Residences	7	10
Miscellaneous use ³	14	18
TOTAL	77	100%

1 Keyes North & South = 1
 Duchesne East & West = 1
 Hillside A & B = 1
 Hillside C & D = 1
 Modulars = 1

2 Administrative and Academic = offices and classrooms

3 Includes gymnasiums, libraries, student union, etc.

Source: Director of Space Management

BUILDINGS Location and Primary Use

Name	Location	Primary Use	Date Constructed or Acquired
Alumni Hall	74 Commonwealth Ave.	Administrative	1948
Alumni Stadium	Beacon St.	Sports	1957
Bapst Library	Main Campus	Library	1928
Barat House	Newton Campus	Jesuit Res. & Admin.	1974
Barry Pavilion	885 Centre St.	Academic	1974
Bea House	176 Commonwealth Ave.	Jesuit Residence	1965
Botolph House	18 Old Colony Road	Administrative	1967
Brock House	78 College Road	Administrative	1972
Campion Hall	Main Campus	Academic & Admin.	1955
Canisius House	67 Lee Road	Jesuit Residence	1966
Caretaker's Cottage	885 Centre St.	Residence	1974
Carney Hall	Main Campus	Academic & Admin.	1962
Chapel (Newton)	885 Centre St.	Chapel	1974
Chestnut Hall	210 Chestnut Hill Ave.	Student Residence	1969
Cheverus Hall	127 Hammond St.	Student Residence	1960
Claver Hall	40 Tudor Road	Student Residence	1956
-----	36 College Rd.	Admin.	1974
-----	72 College Rd.	Jesuit Residence	1970
-----	90 College Rd.	Administrative	1975
Connolly House	300 Hammond St.	Academic	1975
Cushing Hall	Main Campus	Academic & Admin.	1960
Cushing House	885 Centre St.	Student Residence	1974
Devlin Hall	Main Campus	Academic & Admin.	1924
Duchesne East	885 Centre St.	Student Residence	1974
Duchesne West	885 Centre St.	Student Residence	1974
Faber House	102 College Road	Jesuit Residence	1938
Faculty Wing	885 Centre St.	Academic & Admin.	1974
Fenwick Hall	46 Tudor Road	Student Residence	1960
Fitzpatrick Hall	137 Hammond St.	Student Residence	1960
Fulton Hall	Main Campus	Academic & Admin.	1948
Gasson Hall	Main Campus	Academic & Admin.	1913

Name	Location	Primary Use	Date Constructed or Acquired
Gonzaga Hall	149 Hammond St.	Student Residence	1958
Greycliff Hall	2051 Commonwealth Ave.	Student Residence	1969
Haley House	314 Hammond St.	Residence	1969
Hancock House	223 Beacon St.	Residence	1907
Hardey House	885 Centre St.	Student Residence	1974
Higgins Hall	Main Campus	Academic & Admin.*	1966
Hillside A	100 Commonwealth Ave.	Student Residence	1973
Hillside B	100 Commonwealth Ave.	Student Residence	1973
Hillside C (Renamed Rubenstein Hall)			
Hillside D	90 Commonwealth Ave.	Student Residence	1973
Hopkins House	116 College Road	Administrative	1968
Hovey House	258 Beacon St.	Residence	1971
Kenny-Cottle Lib.	885 Centre St.	Library	1974
Keyes North	885 Centre St.	Student Residence	1974
Keyes South	885 Centre St.	Student Residence	1974
Kirkwood Hall	19 South St.	Student Residence	1969
Kostka Hall	149 Hammond St.	Student Residence	1958
Lawrence House	122 College Rd.	Administrative	1968
Linden Hall	5 South St.	Student Residence	1969
Loyola Hall	42 Tudor Rd.	Student Residence	1956
Lyons Hall	Main Campus	Academic & Admin.	1951
McElroy Commons	Main Campus	Student Services** & Admin.	1955
McGuinn Hall	Main Campus	Academic & Admin.	1968
McHugh Forum	Lower Campus	Ice Skating rink	1958
Mill St. Cottage	Newton Campus	Residence	1974
Modulars	Lower Campus	Student Residence	1971
Murray House	292 Hammond St.	Commuter Center	1967
O'Connell Hall	185 Hammond St.	Student Union	1938
Phelps Hall	25 South St.	Student Residence	1969
Philomatheia Hall	86 Commonwealth Ave.	Administrative	1920
Pine Hall	15 South St.	Student Residence	1969
Putnam Center	885 Centre St.	Academic	1974
Quonset Hut	885 Centre St.	Gymnasium	1974
Radnor Hall	9 South St.	Student Residence	1969
Rahner House	96 College Road	Jesuit Residence	1952
Recreation Complex	Lower Campus	Sports	1972
Reservoir Dorm	200 St. Thos. More Dr.	Student Residence	1975
Roberts Center	Main Campus	Academic & Admin. & Gym.	1958
Roncalli Hall	182 Hammond St.	Student Residence	1965
Rubenstein Hall	90 Commonwealth Ave.	Student Residence	1973
Service Building	Main Campus	Admin. & Trade Shops	1948
Shaw House	377 Beacon St.	Student Residence	1962
Shea Field	Beacon St.	Baseball Diamond	1960
South Hall	39-41 South St.	Student Residence	1969
Southwell Hall	38 Commonwealth Ave.	Administrative	1937
St. Mary's Hall	Main Campus	Jesuit Residence	1917
St. Mary's Hall	885 Centre St.	Academic & Admin.	1974
St. Thomas More Hall	St. Thos. More Drive	Administrative	1955
Stuart House (Law School)	885 Centre St.	Academic & Admin.	1974
Townhouse	60 Tudor Rd.	Student Residence	1971
Welch Hall	200 Hammond St.	Student Residence	1965
Williams Hall	143 Hammond St.	Student Residence	1965
Xavier Hall	44 Tudor Rd.	Student Residence	1956

*Academic & Admin. = classrooms and offices

**Student services in McElroy Commons include bookstore, dining halls, mail room

Source: Director of Space Management

Dormitories

CHESTNUT HILL:		Living Units	Students	Staff	Total
Upper Campus:					
Cheverus	127 Hammond St.	67	132	3	135
Claver	40 Tudor Rd.	39	73	3	76
Fenwick	46 Tudor Rd.	74	136	4	140
Fitzpatrick	137 Hammond St.	73	141	3	144
Gonzaga	149 Hammond St.	78	151	3	154
Kostka	149 Hammond St.	78	150	3	153
Loyola	42 Tudor Rd.	52	98	3	101
Roncalli	182 Hammond St.	70	134	3	137
Shaw	377 Beacon St.	10	18	1	19
Townhouse	60 Tudor Rd.	51	98	3	101
Welch	200 Hammond St.	77	146	3	149
Williams	142 Hammond St.	72	138	3	141
Xavier	44 Tudor Rd.	38	76	1	77
		<u>779</u>	<u>1,491</u>	<u>36</u>	<u>1,527</u>
Lower Campus					
Hillside A	100 Commonwealth Ave.	108	210	3	213
Hillside B	100 Commonwealth Ave.	80	152	2	154
Hillside D	90 Commonwealth Ave.	96	188	2	190
Modulars	St. Thomas More Drive	258	498	9	507
Reservoir	200 St. Thos. More Dr.	408	792	10	802
Rubenstein	90 Commonwealth Ave.	90	174	2	177
		<u>1,040</u>	<u>2,014</u>	<u>28</u>	<u>2,043</u>
NEWTON CAMPUS:					
Cushing	885 Centre Street	64	121	2	123
Duchesne East	885 Centre Street	64	128	3	131
Duchesne West	885 Centre Street	73	127	2	129
Hardey	885 Centre Street	97	176	4	180
Keyes North	885 Centre Street	75	140	4	144
Keyes South	885 Centre Street	57	105	3	108
Stuart House	885 Centre Street	8	16	1	17
		<u>438</u>	<u>813</u>	<u>19</u>	<u>832</u>
OFF-CAMPUS:					
Chestnut Hall	210 Chestnut Hill Ave.	19	34	2	36
Greycliff	2051 Commonwealth Ave.	29	40	2	42
Kirkwood	19 South St.	23	57	2	59
Linden	5 South St.	11	17	1	18
Phelps	25 South St.	7	13	2	15
Pine	15 South St.	11	22	1	23
Radnor	9 South St.	11	18	1	19
South	39-41 South St.	26	46	2	48
		<u>147</u>	<u>247</u>	<u>13</u>	<u>260</u>
TOTALS		2,404	4,565	97	4,662

Source: Housing Office

Classrooms

Building	Number of Classrooms.	Stations
Barry Pavilion	5	490
Campion	15	823
Carney	25	1,042
Cushing	13	878
Devlin	2	298
Fulton	16	1,204
Gasson	18	1,033
Higgins	9	603
Kenny-Cottle Lib.	1	125
Lyons	10	555
McGuinn	17	597
St. Thomas More	4	160
Stuart	9	704
Totals	144	8,512

Source: Director of Space Management

Dining Facilities

Name	Location	Capacity
Eagle's Nest Snack Bar	McElroy Commons	500
Faculty Dining Room	McElroy Commons	175
Kirkwood Cafeteria	Kirkwood Hall	125
Lyons Cafeteria	Lyons Hall	550
McElroy Dining Hall	McElroy Commons	1,000
Newton Campus Cafeteria	Stuart House	300
Newton Campus Snack Bar	Stuart House	200
Snake 'n' Apple	Lower Campus	90
Trustees' Room	McElroy Commons	40
Total Capacity		2,980

Source: Dining Department

Offices

Chestnut Hill:			Newton Campus:		
Building	No. of Offices	Building	No. of Offices	Building	No. of Offices
Alumni Hall	8	Lawrence House	10	Barat House	9
Bapst Library	8	36 College Rd.	9	Barry Wing	25
Botolph House	12	Lyons Hall	75	Faculty Wing	21
Brock House	7	McElroy Commons	32	Kenny-Cottle Library	8
Campion Hall	56	McGuinn Hall	184	Putnam Center	3
Carney Hall	222	Philomatheia Hall	12	Stuart House	61
Cushing Hall	43	Roberts Center	24	St. Mary's Hall	8
Devlin Hall	40	Rubenstein Hall	12		
Fulton Hall	56	Service Building	17	Subtotal	135
Gasson Hall	36	Southwell Hall	26	Total Offices	1,153
Higgins Hall	53	St. Thomas More Hall	65		
Hopkins House	11	Subtotal	1,018		

Source: Director of Space Management

FINANCE



**Revenues and Expenditures
(thousands of dollars)**

Revenues	1973-74	1974-75	1975-76
Tuition and Fees	\$27,398	\$30,201	\$33,238
Contracts and Grants	7,082	7,650	8,681
Organized Activities	1,148	1,327	2,125
General:			
Gifts, investments and other income	1,786	2,034	2,104
Auxiliary Enterprises	5,718	7,778	8,685
Total Revenues	<u>\$43,132</u>	<u>\$48,990</u>	<u>\$54,833</u>
 Expenditures			
Educational and General:			
Instructional	\$13,651	\$15,420	\$16,746
Organized Activities	1,926	2,158	2,544
Sponsored Research	5,721	5,709	6,435
Other	11,601	13,429	16,446
Mandatory transfers: interest, principal, loan funds, plant loans	<u>944</u>	<u>432</u>	<u>499</u>
	<u>\$33,843</u>	<u>\$37,148</u>	<u>\$42,670</u>
Auxiliary Enterprises:			
Expenditures	5,504	7,071	7,284
Principal and Interest	990	1,272	1,649
Other Transfers:			
Plant replacement, construction and loan funds	<u>2,683</u>	<u>3,221</u>	<u>2,881</u>
Total Expenditures	<u>\$43,020</u>	<u>\$48,712</u>	<u>\$54,484</u>

Source: Office of the Financial Vice President

**Tuition and Fees
1966/67 Through 1977/78**

	1977/78	1976/77	1975/76	1974/75	1973/74	1972/73	1971/72	1970/71	1969/70	1968/69	1967/68	1966/67
UNDERGRADUATE SCHOOLS	7.7% *	7.6%	5.4%	5.7%	1.9%	4%	11.6%	12%	25%	—	14.3%	—
Arts & Sciences	\$3,420	\$3,175	\$2,950	\$2,800	\$2,650	\$2,600	\$2,500	\$2,240	\$2,000	\$1,600	\$1,600	\$1,400
Summer Session (per hour)	75	75	70	70	70	70	70	60	50	45	45	40
Evening College (per course)	220	210	200	190	45	45	45	45	45	35	35	30
Management	3,420	3,175	2,950	2,800	2,650	2,600	2,500	2,240	2,000	1,600	1,600	1,400
Nursing	3,420	3,175	2,950	2,800	2,650	2,600	2,500	2,240	2,000	1,600	1,600	1,400
Education	3,420	3,175	2,950	2,800	2,650	2,600	2,500	2,240	2,000	1,600	1,600	1,400
GRADUATE SCHOOLS												
Arts & Sciences (per hour)	105	100	95	90	85	75	70	70	60	50	50	45
Law School	3,500	3,200	2,950	2,750	2,550	2,450	2,350	2,240	2,000	1,700	1,600	1,500
Social Work	3,380	3,125	2,900	2,750	2,600	2,500	2,350	2,240	2,000	1,700	1,500	1,500
Management (per course)	100	86	80	225	70	60	60	60	60	55	55	50
ROOM												
Reservoir	1,100	1,025	1,000	—	—	—	650	680	380	380	380	350
Kilsyth	—	—	850	—	—	—	650	680	380	380	380	350
Upper Campus, South Street	850	775	750	750	650	650	—	—	—	—	—	—
Cleveland Circle	—	775	750	750	650	650	—	—	—	—	—	—
Modulars	1,050	950	900	850	750	750	—	—	—	—	—	—
Hillside - 3 bedroom	1,050	975	950	950	800	—	—	—	—	—	—	—
Hillside - 2 bedroom	1,100	1,025	1,000	1,000	850	—	—	—	—	—	—	—
Newton	850	775	750	—	—	—	—	—	—	—	—	—
BOARD FEES	825	750	700	650	600	600	600	600	600	600	600	600
Laboratory	100	100	100	100	100	100	50	50	50	50	50	50
Undergraduate Government	24	24	20	20	20	20	20	20	18	10	5	—
Grad. Student Assoc.	5	5	5	5	5	5	—	—	—	—	—	—
Health	70	70	60	60	60	130	115	70	70	70	70	—
Recreation	32	32	25	25	25	25	10	—	—	—	—	—

* Arts & Sciences Percentage Increase per year.
Source: Controller's Office

**Boston College
Tuition Restated in 1967 Dollars**

Fiscal Year	Consumer Price Index*	Tuition In Absolute Dollars	Tuition In 1967 Dollars
1967	98.6	\$1,400	\$1,420
1968	101.9	1,600	1,570
1969	107.0	1,600	1,495
1970	113.1	2,000	1,768
1971	119.0	2,240	1,882
1972	123.3	2,500	2,028
1973	128.2	2,600	2,028
1974	139.7	2,650	1,897
1975	155.2	2,800	1,804
1976	166.2	2,950	1,775
1977	176.0	3,175	1,804
1978	186.0**	3,420	1,839

*Fiscal Year Average

**Estimate

Source: Controller's Office

**Contracts and Grants
by Source of Funding
(thousands of dollars)**

REVENUES	1970-71	1971-72	1972-73	1973-74	1974-75	1975-76
Sponsored Research	\$3,044	\$3,071	\$2,988	\$2,885	\$3,409	\$3,355
Other Programs Sponsored	<u>2,612</u>	<u>3,037</u>	<u>3,763</u>	<u>4,197</u>	<u>4,241</u>	<u>5,326</u>
TOTALS	\$5,656	\$6,108	16,751	\$7,082	\$7,650	\$8,681
SOURCES OF FUNDING						
Federal Government	\$5,078	\$5,062	\$6,072	\$6,087	\$6,413	\$7,524
State Government	115	312	229	252	418	366
Local Government	153	210	91	147	137	134
Non-Government	<u>310</u>	<u>524</u>	<u>359</u>	<u>596</u>	<u>682</u>	<u>657</u>
TOTALS	\$5,656	\$6,108	\$6,751	\$7,082	\$7,650	\$8,681

Source: Controller's Office

**Contract and Grant Awards
July 1, 1976 through March 31, 1977***

Biology Department

Source of Funding	Title	Project Director	Start Date	Time Period	Award	Type**
Hoffman-LaRoche Inc.	C.E.A. Studies	Dr. A. Rule	10/1/76	1 yr.	\$ 5,000	R
U.S. Public Health Service	Protein Methylation in Posterior Pituitary Function	Dr. Maurice Liss	12/1/76	1 yr.	28,493	R
U.S. Public Health Service	Genetics and Biochemistry of Neurological Mutants	Dr. Chai Yoon	1/1/77	1 yr.	41,252	R
U.S. Public Health Service	Biochemistry of Insect Cuticle	Dr. Maria Bade	3/1/77	1 yr.	53,000	R

Chemistry Department

Boston University	Molecular Mechanisms of Platinum and Ruthenium Drugs Duration	Dr. M. Clarke	11/1/76	1 yr.	14,000	R
U.S. Public Health Service	Synthesis of the Anti-Tumor Agent Harringtonine	Dr. T.R. Kelly	12/1/76	1 yr.	28,855	R
Office of Naval Research	Chemical Kinetics of Excited States: Novel Application of Gas Phase EPR	Dr. D. McFadden	3/1/77	1 yr.	43,000	R

School of Education

U.S. Department of Labor	Rearranged Work Schedule in the Private Sector	Dr. R. Nuttall	12/6/76	9 mos.	\$ 21,274	R
City of Boston	Chap. 636 Phase II District III Collaborative Project	Dr. L. Przewlocki Dr. G. Ladd	9/1/76	1 yr.	108,670	T
U.S. Air Force	Civilian Utilization of Women in Industrial Career Fields	Dr. R. Nuttall D. Polite	3/14/77	14 mos.	45,892	R
National Institute of Education	Irish Study (continuation)	Dr. R. Airasian Dr. G. Madaus	11/1/76	1 yr.	75,000	R
State of California	Special Education Intern Program	Dr. L. Campbell	2/28/77	4 mos.	17,132	T
City of Boston	Evaluate ESAA Project	Dr. R. Nuttall J. Hunter	3/1/77	5 mos.	5,002	T

Nursing School

U.S. Public Health Service	Capitation Grants	Dr. M. Dineen	10/1/76	1 yr.	\$165,000	T
----------------------------	-------------------	---------------	---------	-------	-----------	---

Physics Department

National Science Foundation	Spectral Diagnostics for Turbulent Electric Fields	Dr. P. Bakshi Dr. G. Kalman	11/15/76	1 yr.	32,752	R
U.S. Air Force	Magnetic Indicators of Substorm Activity	Dr. R. Carovillano	12/3/76	3 yrs.	225,000	R
U.S. Air Force	Equation of State and Conductivity of Laser-Compressed Electron-Iron Plasma	Dr. G. Kalman	1/1/77	12 mos.	25,000	R

Psychology Department

Source of Funding	Title	Project Director	Start Date	Time Period	Award	Type
Department of Labor	Function of Psychological Testing in Police Selection	Mr. J. Gannon	4/1/77	1 yr.	8,783	T
U.S. Public Health Service	Maternal Behavior: Neural Site of Progesterone Action	Dr. M. Numan	1/1/77	1 yr.	15,656	R

School of Social Work

Hanscom AFB Taunton Chamber of Commerce Federal Executive Board	Training for Industrial Alcoholism Programs	Dr. D. Masi	8/1/76	1 yr.	\$ 6,000	T
---	---	-------------	--------	-------	----------	---

Sociology

U.S. Public Health Service	Mental Health Volunteers Bibliography	Dr. D. Smith	2/1/77	1 yr.	7,038	R
----------------------------	---------------------------------------	--------------	--------	-------	-------	---

Space Data Analysis Lab

U.S. Air Force	Auroral Backscatter Cross-section Model	Dr. R. Hegblom	12/3/76	1 yr.	63,177	R
U.S. Air Force	Mathematics and Physics Studies	Mr. N. Grossbard	11/5/76	1 yr.	150,000	R
U.S. Air Force	Satellite Data Analysis	Mr. D. Delorey	12/3/76	1 yr.	239,861	R
U.S. Air Force	Density Models	Dr. J. Forbes	12/1/76	1 yr.	89,981	R
University of Lowell	DAASM Computer Model Consulting	Mr. L. Power	2/1/77	6 mos.	11,988	R
U.S. Air Force	Structure of the Upper Atmosphere	Dr. J. Forbes	1/1/77	1 yr.	20,462	R

Theology

Kennedy Foundation	Faith Development and Religious Education	Rev. J. Fowler	12/1/76	1 yr.	13,579	R
--------------------	---	----------------	---------	-------	--------	---

Weston Observatory

U.S. Geological Survey	Seismic Net Contract	Rev. J. Skehan	10/1/76	1 yr.	\$ 5,000	R
Nuclear Regulatory Commission	A Study of Seismicity and Tectonics in New England	Dr. Chiboris Mr. R. Ahner	11/1/76	1 yr.	80,000	R
Northrop Corp.	Air Pollution Courses	Mr. T. Rider	1/1/77		10,255	T
National Science Foundation	Narragansett Coal Basin Project	Rev. J. Skehan	3/1/77	1 yr.	109,300	R

Miscellaneous

U.S. Public Health Service	Biomedical Research Support Grant	Rev. D. Plocke S.J.	3/1/77	1 yr.	35,000	T
					\$1,800,402	

*Listing contains approximately 90% of all grant awards for one year.

**T = Training
R = Research
O = Other

Source: Office of Research Administration

LIBRARIES



Boston College Libraries

Bapst Library	Main Library, Middle Campus
School of Nursing Library	Cushing Hall, 4th Floor
Science Library	Devlin Hall, Rooms 103-108
School of Social Work Library	McGuinn Hall Basement
School of Management Library	Fulton Hall, 2nd Floor
Law School Library	Kenny-Cottle Library, Newton Campus
Resource Center	Kenny-Cottle Library, (Undergraduate) Newton Campus
Geophysics Library	Weston Observatory, Weston, Mass.

Library Hours

	Mon.-Fri.		Saturday		Sunday	Summer	
	am	pm	am	pm	pm	am	pm
Bapst	8:30-11:00		11:00-11:00		11:00am-11:00	8:30-9:00 ³	
Science	8:30-11:00 ¹		9:00- 5:00		1:00pm-10:00	9:00-5:00	
Management	8:30-10:00 ¹		9:00- 5:00		2:00-10:00	9:00-9:00	
Social Work	9:00-11:00 ²		9:00- 5:00		1:00pm-10:00	9:00-5:00	
Law	8:00-12M		9:00-12M		10:00am-12M	Closed	
Resource Ctr.	8:00-12M		9:00-12M		10:00am-12M	9:00-5:00	
Geophysics	9:00- 5:00		Closed		Closed	9:00-5:00	
Nursing	9:00-11:00 ²		9:00- 5:00		1:00pm-11:00	9:00-5:00	

¹ Friday - 8:30am-9:00pm

² Friday - 9:00am-7:00pm

³ Saturday - 8:30am-12 noon

Source: University Librarian

Holdings by Individual Libraries

1977

Library	Books	Periodicals	Microfilm
Bapst	627,322	2,045	187,046
Law	117,790	698	70,292
School of Mgmt.	62,221	745	11,001
School of Nursing	29,830	590	2,611
Science	54,508	518	8,594
Weston	10,231	57	1,340
Social Work	17,122	252	112
Resource Center	29,500	0	0
TOTALS	948,524	4,905	280,996

Source: University Librarian

**Expenditures for Books
1977**

Library	1973-74	1974-75	1975-76	1976-77
Bapst	\$324,884	\$315,246	\$350,150	\$371,927
Law	74,000	85,000	92,704	108,801
Management	21,110	28,850	29,757	30,710
Nursing	9,300	19,900	19,500	25,090
Science	50,390	58,000	68,080	81,010
Social Work	4,500	5,500	6,300	7,650
TOTALS	\$484,184	\$512,496	\$566,491	\$625,188

Source: University Librarian

**Volume Acquisitions
(all libraries)**

Year	Number
1969-70	34,206
1970-71	36,262
1971-72	34,758
1972-73	40,835
1973-74	29,945
1974-75	25,770*
1975-76	31,091
1976-77	29,095
TOTAL	261,962*

Circulation Statistics

Year	Student	Faculty	Inter-library loans	Reserve	Total
1971-72	132,368	14,307	1,520	17,848	166,043
1972-73	141,230	10,199	951	19,688	172,068
1973-74	171,321	11,052	2,451	38,137	222,961
1974-75	114,688	10,030	2,576	36,976	164,270
1975-76	113,395	11,577	2,887	96,906	224,765
1976-77	108,364	11,453	3,646	98,118	221,581

*Excluding addition of 67,500 from Newton Library.

Source: University Librarian.

Boston College Libraries Special Collections

Many rare and valuable materials are included in Special Collections, ranging from medieval manuscripts to modern limited editions, fine bindings, autographed copies, and letters of established authors. Because of their scarcity, value, or fragile nature, access is limited. Below are brief notes on some of the more outstanding collections.

FRANCIS THOMPSON COLLECTION

This, the most complete collection of Thompsoniana in existence, includes first and rare editions, manuscripts, notebooks, letters, and other material relating to the poet, his times, and his work.

MEYNELL COLLECTION

The most extensive collection in the Western Hemisphere of the works of Wilfrid and Alice Meynell and three of their children — Everard, Viola, and Sir Francis — providing a well-rounded view of this remarkable family of poets, biographers, novelists, essayists, editors and publishers.

PATMORE COLLECTION

Coventry Patmore, poet, essayist, critic, contemporary and close friend of Francis Thompson, is represented here by numerous first editions, manuscripts, articles, book reviews and letters. Among the correspondents are Arnold, Browning, Carlyle, Emerson, Hawthorne, Rossetti, Tennyson and Thackeray.

SPECIAL IRISH COLLECTION

Nearly every aspect of Irish history and literature is covered in this collection. Of special interest are the many papers of Patrick Andrew Collins, president of the Irish Land League, and letters of Jeremiah O'Donovan Rossa, poet, editor and leader of the Fenian and related organizations. Included also is a facsimile, in color, of the famous *Book of Kells*, and complete editions of Malton's *Views of Dublin, 1792-1799*; *The Ordinance Surveys*, *The Irish Bulletin*, and the *Acta Sanctorum Hiberniae*.

JESUITANA

A collection of early and rare works by and about Jesuits. It includes *Lettere e Relazione Orientale*, a series of annual letters from Jesuit missionaries in Indo-China, Tibet, Japan, etc., published in Italy between 1590 and 1661. Most treasured is an original letter of St. Francis Xavier to John III, King of Portugal, dated January 31, 1552.

MERTON COLLECTION

The original typescript and galleys of *The Seven Storey Mountain* are gifts of the author, along with galleys of *The Waters of Siloe*, and his own copy of *The Poetry and Prose of William Blake*. There is an autographed copy of each book published by Merton, and numerous periodicals containing the first printing of poems and essays, many of them uncollected.

WILLIAMS COLLECTION

Approximately 10,000 books and pamphlets are contained in this collection, which provides valuable source material on the ethnology, social and natural history of the West Indies, with special emphasis on Jamaica. Some unusual items of Africana and Judaica are also included.

MORRISSEY COLLECTION OF JAPANESE PRINTS

Of particular value to those interested in the history of Japanese art, this collection contains over 100 prints, paintings and reproductions, Japanese artifacts, and several books. Especially noteworthy are landscape designs of Hiroshige (1797-1858) and Hokusai (1760-1849).

THE BOSTON COLLEGE GUILD OF ST. LUKE OF BOSTON HEALTH ETHICS COLLECTION

Initiated in 1974, this contains books, pamphlets, periodicals, reprints and tapes which concern the ethics of medicine and health care.

RITA P. KELLEHER COLLECTION

In recognition of her twenty-five years of service to the School of Nursing, including twenty years as Dean, this collection contains archival, historical, research, and other significant materials in nursing.

Source: *University Librarian*

**Boston College Libraries
Data Bases Available**

SOCIAL SCIENCES AND HUMANITIES

ASI (American Statistics Index)
America: History and Life
Art Bibliographies Modern
CIS (Congressional Information Service)
CRECORD (Congressional Record Index)
Child Abuse and Neglect
ERIC (RIE, CIJE, AIM/ARM, ECEA)
Historical Abstracts
Language and Language Behavior Abstracts
PAIS (Public Affairs Information Service)
Psychological Abstracts
SOCIAL SCISEARCH
(Social Sciences Citation Index)
Sociological Abstracts

BUSINESS, ECONOMICS

CIN (Chemical Industry Notes)
Federal Index
INFORM (Abstracted Business Information)
MANAGEMENT
PREDICASTS (Bibliographic)
(Market Abstracts, F & S Index, Domestic and
International Statistics, EIS Plants)
PREDICASTS (Computational)

BIOMEDICINE

MEDLINE (AVLINE, CANCERLINE,
CANCERPROJ, CATLINE, CHEMLINE,
CLINPROT, EPILEPSY, MEDLINE and
BACKFILES, TOXLINE)
PNI (Pharmaceutical News Index)

SCIENCES

AGRICOLA (Bibliography of Agriculture)
ASFA (Aquatic Sciences & Fisheries Abstracts)
BIOSIS (Biological Abstracts)
CAB (Commonwealth Agricultural Bureau)
CA Condensates (Chemical Abstracts)
CA Patent Concordance

CHEMNAME

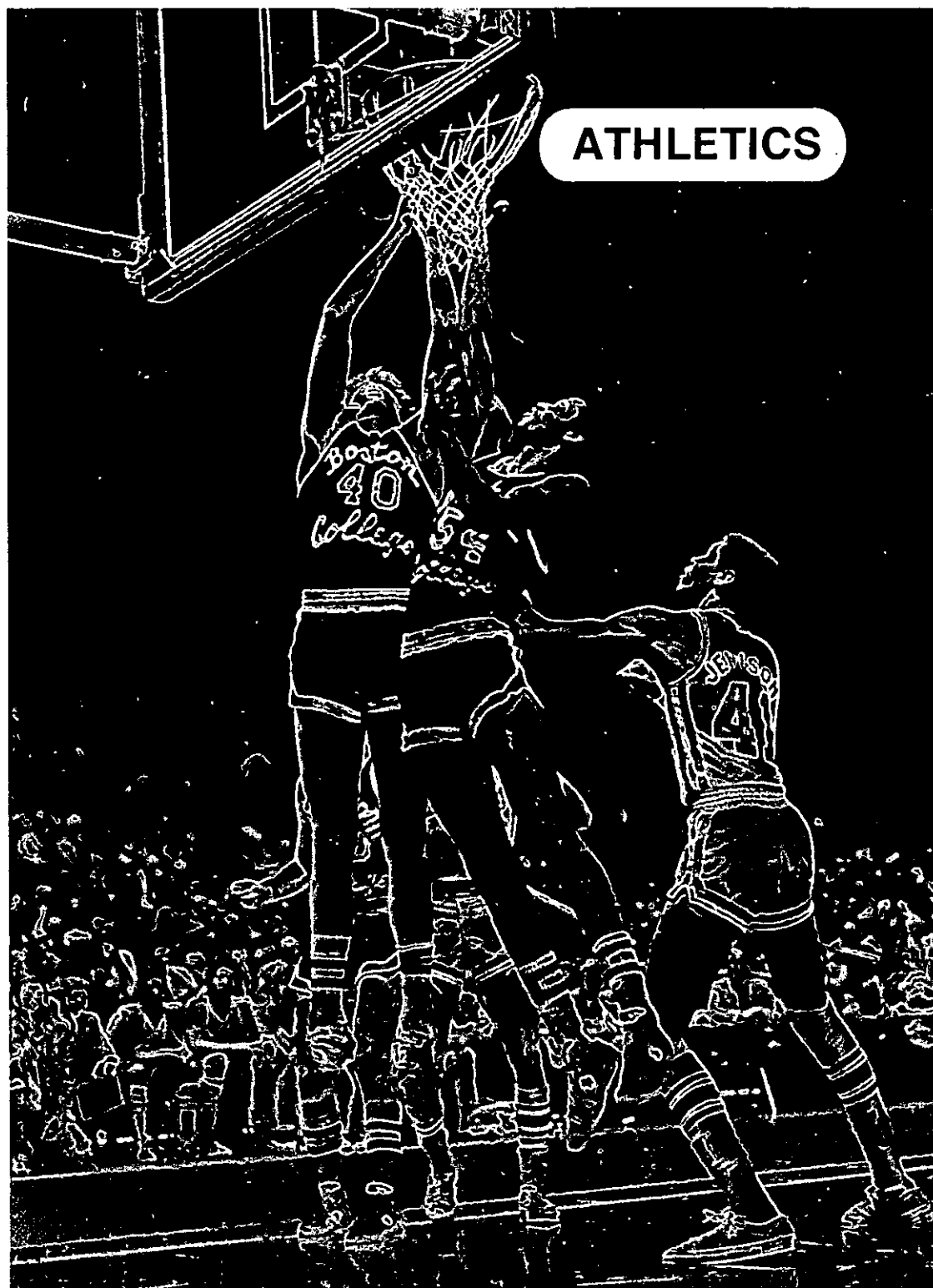
CRIS (Current Research Information Service —
USDA)
GEOREF (Bibliography and Index of Geology)
INSPEC — PHYSICS (Physics Abstracts)
MGA (Meteorological and Geostrophysical
Abstracts)
Oceanic Abstracts
Pollution Abstracts
SCISEARCH (Science Citation Index)
SPIN (Searchable Physics Information Notices)

TECHNOLOGY, ENGINEERING

APTIC (Air Pollution Technical Information
Center)
COMPENDEX (Engineering Index)
ENERGYLINE (Energy Information Abstracts)
ENVIROBIB (Environmental Periodicals
Bibliography)
ENVIROLINE (Environment Abstracts)
Food Science and Technology Abstracts
INSPEC - ELEC/COMP (Electrical and
Electronics Abstracts, Computer and Control
Abstracts)
ISMEC (Mechanical Engineering)
METADEX (Metals Abstracts, Alloys Index)
PAPERCHEM (Institute of Paper Chemistry)
World Aluminum Abstracts

MULTIDISCIPLINARY

CDI (Comprehensive Dissertation Index)
Foundation Directory
Foundation Grants Index
GRANTS
INFORMATION BANK (N.Y. Times)
LISA (Library and Information Science
Abstracts)
NTIS (National Technical Information Service)
SSIE (Smithsonian Science Information)



Sports at Boston College

Men's Varsity

Football
Ice Hockey
Basketball
Baseball
Track
Soccer
Lacrosse
Golf
Tennis
Wrestling
Skiing
Sailing
Swimming

Men's Intramurals

Touch Football
Tennis Doubles
Tennis Singles
Racquetball Doubles
Racquetball Singles
Handball
Ice Hockey
Volleyball
Cross Country
Basketball
Squash
Water Basketball
Track
Swimming

Women's Varsity

Volleyball
Basketball
Field Hockey
Swimming
Tennis
Fencing
Golf
Track
Sailing
Skiing

Women's Intramurals

Tennis Singles
Tennis Doubles
Basketball
Racquetball Doubles
Racquetball Singles
Table Tennis
Squash Doubles
Squash Singles
Volleyball

Coed Intramurals

Volleyball
Swimming
Track
Softball
Racquetball Doubles
Squash Doubles
Tennis Doubles

Lessons

Tennis
Fencing
Figure Skating
Gymnastics
Modern Dance
Exercise
Golf
Squash
Swimming

Clubs

Men's Water Polo
Women's Water Polo
Women's Ice Hockey
Women's Lacrosse
Women's Soccer

Varsity Sports Records

	1973-1974	1974-1975	1975-1976	1976-1977
	W-L-T*	W-L-T	W-L-T	W-L-T
Men's Records				
Football	7-4	8-3	7-4	8-3
Basketball	11-14	21-9	9-17	8-18
Ice Hockey	22-7-1	16-12	15-13-1	18-11-2
Wrestling	2-6	8-8	5-5	3-7
Soccer	3-9-1	6-8-1	4-11-1	
Lacrosse	10-1	8-2	7-4	7-4
Tennis	17-1	4-1	10-5	12-2
Baseball	17-9-1	13-12	10-13	14-8
Swimming	4-6	8-0	11-0	
Golf	8-6	7-7	10-4	5-7
Women's Records				
Basketball	4-6	9-2	7-5	
Field Hockey	2-2	4-0	7-1	6-3-1
Swimming	8-3	6-2	11-0	12-0
Tennis	3-3	4-2	11-2	5-1
Volleyball	0-8	2-8	6-5	

*Win-Loss-Tie

Boston College Football Schedules

1977		
Sept. 10	at Texas	4:00 p.m. C.D.T.
Sept. 17	at Tennessee	7:30 p.m. C.D.T.
Sept. 24	Army	1:30 p.m. E.D.T.
Oct. 1	Pittsburgh	1:30 p.m. E.D.T.
Oct. 8	Tulane	7:30 p.m. E.D.T.
Oct. 15	at West Virginia	1:30 p.m. E.D.T.
Oct. 22	Villanova	1:30 p.m. E.D.T.
Oct. 29	at Air Force	1:30 p.m. M.S.T.
Nov. 12	at Syracuse	1:30 p.m. E.S.T.
Nov. 19	Massachusetts	1:30 p.m. E.S.T.
Nov. 26	at Holy Cross	1:30 p.m. E.S.T.

1978		1979		1980	
Sept. 16	Air Force	Sept. 15	Tennessee	Sept. 13	at Pittsburgh
Sept. 23	Texas A & M	Sept. 22	Villanova	Sept. 20	Stanford
Sept. 30	Navy	Sept. 29	at Stanford	Sept. 27	at Villanova
Oct. 7	Pittsburgh	Oct. 6	at Pittsburgh	Oct. 4	at Navy
Oct. 14	at Tulane	Oct. 13	West Virginia	Oct. 18	at Florida State
Oct. 28	at Temple	Oct. 20	at Miami	Oct. 25	Army
Nov. 4	at Villanova	Oct. 27	at Army	Nov. 1	at Air Force
Nov. 11	at Army	Nov. 3	Tulane	Nov. 15	Syracuse
Nov. 18	Syracuse	Nov. 17	at Syracuse	Nov. 22	at Mass.
Nov. 25	at Mass.	Nov. 24	Mass.	Nov. 29	Holy Cross
Dec. 2	Holy Cross	Dec. 1	at Holy Cross		

Source: Director of Sports Information

1977-78 Varsity Hockey Schedule

November			January		
20	Sunday	at Pennsylvania	21	Saturday	at Boston University
22	Tuesday	St. Anselm's	24	Tuesday	at Yale
29	Tuesday	Brown	29	Sunday	R.P.I.
December			31	Tuesday	Providence
2	Friday	at St. Lawrence	February		
3	Saturday	at Clarkson	2	Thursday	at Dartmouth
6	Tuesday	at Northeastern	6	Monday	Beanpot
9	Friday	Princeton	Tournament (BU)		
12	Monday	at Harvard	9	Thursday	New Hampshire
23	Friday	Notre Dame	13	Monday	Beanpot
28	Wednesday	Air Force	Tournament Finals		
January			17	Friday	Boston University
3	Tuesday	at New Hampshire	21	Tuesday	at Bowdoin
6	Friday	Colgate	24	Friday	Army
10	Tuesday	Harvard	28	Tuesday	Vermont
14	Saturday	at Cornell	March		
17	Tuesday	Dartmouth	3	Friday	at Providence

1977-78 Basketball Schedule

Sunday	November 27	LeMoyne
Wednesday	November 30	at New Hampshire
Saturday	December 3	at Harvard
Tuesday	December 6	Fairfield
Friday & Sat.	December 9, 10	First Union Invitational at Charlotte, N.C. (East Carolina, LaSalle, North Carolina)
Tuesday	December 13	Stonehill
Tuesday-Friday	December 27-30	All College Tournament at Oklahoma City (Arizona State, Austin-Peay, Miami of Ohio, Oklahoma City Univ., Oral Roberts, San Francisco, Texas A&M)
Saturday	January 7	at Villanova
Saturday	January 14	St. John's
Wednesday	January 18	at Northeastern
Saturday	January 21	at Dartmouth
Tuesday	January 24	at Holy Cross
Friday & Sat.	January 27 & 28	Colonial Classic at Boston Garden (BC vs Massachusetts) Holy Cross vs U Conn.)
Wednesday	February 1	Georgetown University
Saturday	February 4	at Fordham
Wednesday	February 8	at Providence
Saturday	February 11	Holy Cross
Tuesday	February 14	Rhode Island
Thursday	February 16	St. Joseph's
Wednesday	February 22	at U Connecticut
Saturday	February 25	at Syracuse

Source: Director of Sports Information

Community Use Of Boston College Recreational Facilities

Roberts Center

CYO and Parochial League basketball tournaments
State high school cheerleading championships
Concerts and lectures sponsored by Boston College student groups
Locker room facilities for schoolboy football teams

Jack Ryder Track

"Home" facility for St. Sebastian track team
Practice track used almost daily by Boston State College
"Home" facility for the Greater Boston Track Club

Open for general public use at any time not conflicting with
Boston College team practices

Commander Shea Field

Eastern Massachusetts school boy baseball championships

Open for general public use at any time not conflicting with
Boston College team practices

McHugh Forum

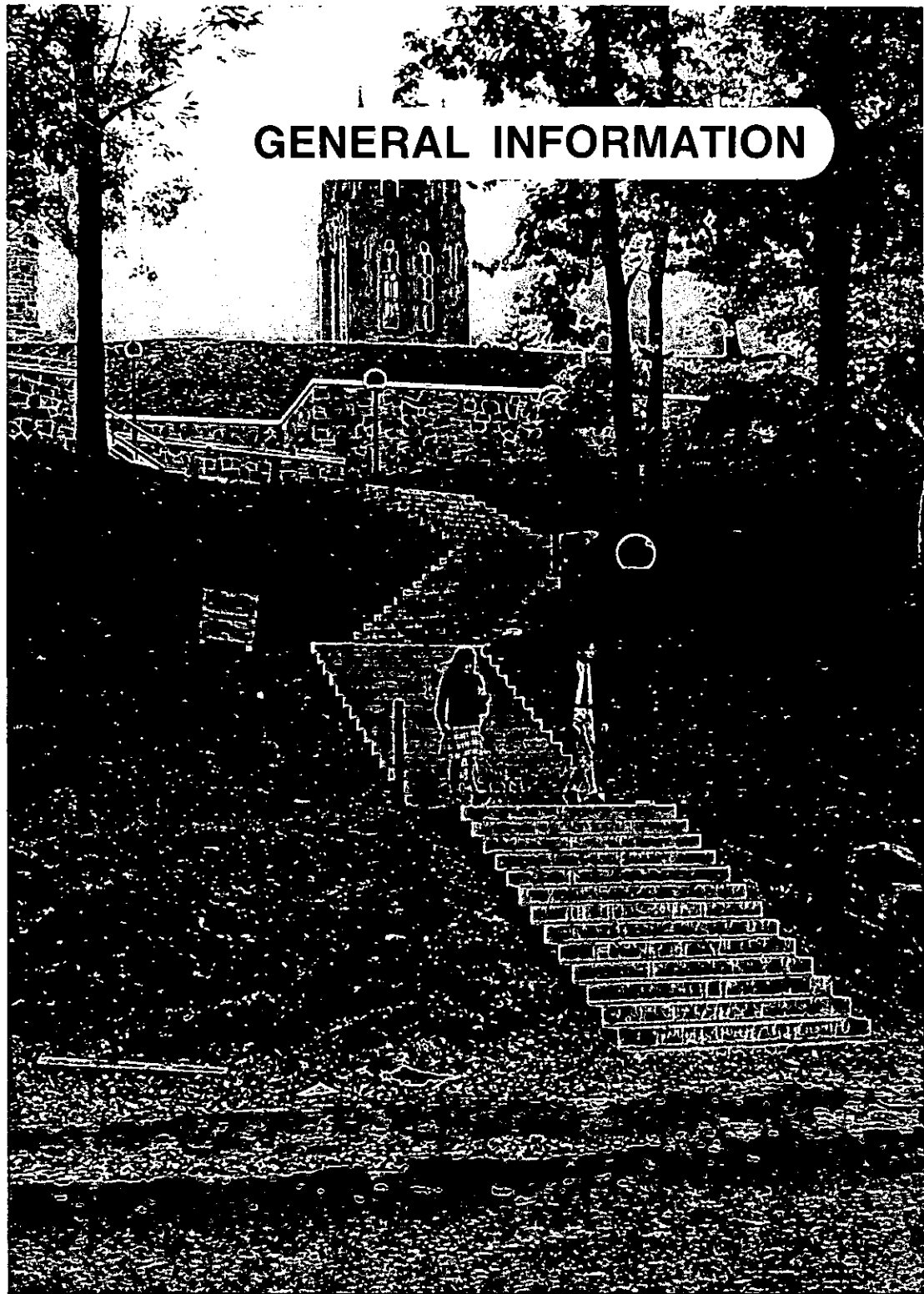
CYO League hockey games
"Home" facility for all Newton and Brookline high and junior
high hockey teams
Greater Boston Bantam League games
Site of 1974 New England PeeWee championships
Chestnut Hill Figure Skating Club meets twice weekly
CYO Color Guard annual competition
Site of a weekend-long antique show and flea market run by local
group each fall

Open ice time daily from 12:00 to 6:00 a.m. Rented to area leagues.
General ice skating five nights per week. Open to students and the
public. Season memberships available at \$30 per person, \$75 per
family, \$25 per family with a 50¢ fee for each use, or a straight fee
collected from those not holding a membership.

Alumni Stadium

Boston College High School Memorial Thanksgiving game
Eastern Massachusetts Schoolboy Superbowl
CYO Drum and Bugle Corps annual competition
Open for general public use at any time not conflicting with
Boston College team practices.

GENERAL INFORMATION



Types of Degrees Conferred at Boston College

Bachelor of Arts (A.B.)

Bachelor of Sciences (B.S.)

Master of Arts (A.M.)

Master of Arts in Teaching (M.A.T.)

Master of Business Administration (M.B.A.)

Master of Education (M.Ed.)

Master of Science (M.S.)

Master of Science in Teaching (M.S.T.)

Master of Social Planning (M.S.P.)

Master of Social Work (M.S.W.)

Master of Theology (Th.M.)

Certificate of Advanced Educational Specialization (C.A.E.S.)

Doctor of Philosophy, (Ph.D.)

Doctor of Law (J.D.)

Doctor of Education (D.Ed.)

Source: Boston College Bulletin

Accreditation and Memberships of the University

ACCREDITING AGENCIES

American Assembly of Collegiate Schools of Business
American Bar Association
American Chemical Society
Association of American Law Schools
Board of Regents of the University of New York
Council on Social Work Education
National Council of Accrediting in Teacher Education
National League for Nursing
New England Association of Colleges and Secondary Schools

ASSOCIATION MEMBERSHIPS

American Association of Colleges for Teacher Education
American Association of University Women
American Council on Education
Association of American Colleges
Association of Jesuit Colleges and Universities
Association for Continuing Higher Education
Association of Urban Universities
College Entrance Examination Board
Council of Graduate Schools
International Association of Universities
International Association of Catholic Universities
National Association of College and University Business Officers
National Catholic Education Association
National Commission on Accrediting
National League for Nursing
Phi Beta Kappa

Source: Deans' Offices

Founder of Boston College

Rev. John McElroy, S.J. Pastor,
Immaculate Conception Parish, Boston
1861-1863

Presidents of Boston College

1. John Bapst, S.J.	1863-1869	13. Thomas I. Gasson, S.J.	1907-1914
2. Robert W. Brady, S.J.	1869-1870	14. Charles W. Lyons, S.J.	1914-1919
3. Robert Fulton, S.J.	1870-1880	15. William Devlin, S.J.	1919-1925
4. Jeremiah O'Conner, S.J.	1880-1884	16. James H. Dolan, S.J.	1925-1932
5. Edward V. Boursaud, S.J.	1884-1887	17. Louis J. Gallagher, S.J.	1932-1937
6. Thomas H. Stack, S.J.	1887	18. William J. McGarry, S.J.	1937-1939
7. Nicholas Russo, S.J.	1887-1888	19. William J. Murphy, S.J.	1939-1945
8. Robert Fulton, S.J.	1888-1891	20. William L. Keleher, S.J.	1945-1951
9. Edward I. Devitt, S.J.	1891-1894	21. Joseph R. N. Maxwell, S.J.	1951-1957
10. Timothy Brosnahan, S.J.	1894-1898	22. Michael P. Walsh, S.J.	1957-1968
11. W. G. Read Mullan, S.J.	1898-1903	23. W. Seavey Joyce, S.J.	1968-1972
12. William F. Gannon, S.J.	1903-1907	24. J. Donald Monan, S.J.	1972-

Honorary Degrees Awarded by Boston College 1952-1977

1952

Gregory Peter XV Cardinal Agagianian, LL.D. (January 14, 1952)
James B. Connolly, Litt.D.
James M. O'Neill, LL.D.
Most Rev. Thomas F. Markham, LL.D. *
Rt. Rev. Thomas J. Riley, LL.D.
James J. Ronan, LL.D.

1953

Dorothy L. Book, LL.D.
Most Rev. James L. Connolly, LL.D.
Clifford J. Laube, Litt.D.
Francis J. O'Halloran, A.M.
Most Rev. Leonard J. Raymond, L.L.D. *
Alex Ross, A.M.
John C. H. Wu, LL.D.

1954

Edward H. Chamberlin, L.L.D.
John J. Hearne, L.L.D. *
James W. Manary, Sc.D.
Thomas A. Printon, L.L.D.
Ven. Bro. William Sheehan, C.F.X., LL.D.
Most Rev. Christopher J. Weldon, LL.D.
Louis de Wohl, Litt.D.
William J. O'Keefe, LL.D. (November 21, 1954)

1955

Fred J. Driscoll, LL.D.
Christian A. Herter, LL.D.
Edward A. Hogan, Jr., LL.D. *
Rear Adm. Bartholomew W. Hagan, Sc.D.
John B. Haynes, LL.D.
His Beatitude Maximos IV, LL.D. (August 23, 1955)
Valerian Cardinal Gracias, LL.D.
Russel Kirk, Litt.D.
Edward A. Sullivan, LL.D.

1956

Bartholomew A. Brickley, LL.D.
Peter J. W. Debye, Sc.D.
Most Rev. Frederick A. Donaghy, LL.D.
The Hon. John F. Kennedy, LL.D. *
John W. King, LL.D.
Charles Munch, D.Mus.
Edward F. Williams, LL.D.

1957

Wallace E. Carroll, LL.D.
Arthur J. Kelly, LL.D.
Augustus C. Long, LL.D. *
Adrian O'Keefe, LL.D.
Very Rev. Msgr. Patrick W. Skehan, LL.D.
Nils Y. Wessell, LL.D.

* Commencement Speaker

1958

Most Rev. Amleto G. Cicognani, D.D., LL.D. (April 21, 1958)
 Carl J. Gilbert, LL.D.
 Paul Horgan, Litt.D.
 Barnaby C. Keeney, LL.D.*
 Henry M. Leen, LL.D.
 Jacques Maritain, LL.D.
 Raissa Maritain, LL.D.
 Harold Marston Morse, D.Sc.
 Rev. John B. Sheerin, C.S.P., LL.D.
 His Eminence Francis Cardinal Spellman, LL.D.
 (December 8, 1958)

1959

His Excellency Sean T. O'Kelly, LL.D. (March 22, 1959)
 Ernest Henderson, LL.D.
 Rev. John LaFarge, S.J., LL.D.
 Henry Cabot Lodge, LL.D.
 George Meany, LL.D.
 Carlos P. Romulo, LL.D.*
 Helen C. White, Litt.D.

1960

Marian Anderson, S.Mus.
 J. Peter Grace, LL.D.
 Caryl P. Haskins, LL.D.
 Robert F. Kennedy, LL.D.
 Charles Malik, LL.D.*
 Most. Rev. Russell J. McVinney, D.D., LL.D.
 Samuel Eliot Morison, LL.D.
 Rt. Rev. Matthew P. Stapleton, LL.D.
 Rev. Henry M. Brock, S.J., D.Sc. (October 12, 1960)

1961

Allen W. Dulles, LL.D.
 Anthony Julian, LL.D.
 Robert D. Murphy, LL.D.*
 Louis R. Perini, LL.D.
 Abraham Ribicoff, LL.D.
 Rt. Rev. Robert J. Sennott, LL.D.
 Edward Teller, LL.D.

1962

Detlev W. Bronk, D.Sc.*
 Ralph J. Bunche, LL.D.
 Christopher J. Duncan, M.D., LL.D.
 Sir Alec Guinness, D.F.A.
 Rt. Rev. Francis J. Lally, Litt.D.
 Ralph Lowell, LL.D.
 Phyllis McGinley, Litt.D.
 Perry G. Miller, Litt.D.

1963

Augustin Cardinal Bea, S.J., J.U.D. (March 26, 1963)
 Very Rev. Edward B. Bunn, S.J., LL.D.
 Lady Barbara Ward Jackson, Litt.D.

* *Commencement Speaker*

Nathan Marsh Pusey, L.H.D.
 Bruce Catton, Litt.D.
 Anthony Joseph Celebrezze, LL.D.*
 Arthur Joseph Goldberg, LL.D.
 John Jay McCloy, LL.D.
 James Barrett Reston, LL.D.
 Rt. Rev. John Joseph Ryan, L.H.D.
 Jose Luis Sert, Litt.D.
 Joseph Leo Sweeney, LL.D.
 Robert Clifton Weaver, LL.D.
 James Edwin Webb, D.Sc.

1964

John Coleman Bennett, LL.D.
 Henri Maurice Peyre, LL.D.
 Most Rev. Ernest John Primeau, LL.D.
 Sidney R. Rabb, L.H.D.
 Paul Anthony Samuelson, LL.D.
 Very Rev. Joseph L. Shea, S.J., LL.D.
 Robert Sargent Shriver, Jr., LL.D.*
 Mrs. Mary Sullivan Stanton, LL.D.

1965

John P. Birmingham, LL.D.
 Robert McAfee Brown, LL.D.
 J. N. Douglas Bush, Litt.D.
 Victor L. Butterfield, L.H.D.
 John T. Connor, LL.D.
 Edith Green, LL.D.
 Rev. John Courtney Murray, S.J., L.H.D.*
 Rt. Rev. Lawrence J. Riley, LL.D.
 Alan T. Waterman, D.Sc.

1966

Most Rev. John W. Comber, MM, D.D., L.H.D.
 Edward F. Gilday, L.H.D.
 Edward M. Kennedy, LL.D.
 Francis Keppel, LL.D.*
 Mother Eleanor M. O'Byrne, R.S.C.J., LL.D.
 Stephen P. Mugar, LL.D.
 Abram L. Sachar, L.H.D.
 Rene Wellek, Litt.D.
 George Wells Beadle, D.Sc.
 William Bosworth Castle, M.D., L.H.D.
 Donald Frederick Hornig, LL.D.
 James Alfred Van Allen, D.Sc.

1967

Sarah Caldwell, Litt.D.
 Richard Palmer Chapman, LL.D.
 Very Rev. John Francis Fitzgerald, C.S.P., L.H.D.
 John Kenneth Galbraith, LL.D.
 John William Gardner, LL.D.*
 Everett Cherrington Hughes, LL.D.
 John Anthony Volpe, LL.D.

1968

Kingman Brewster, LL.D.*
 Rev. Henri de Lubac, S.J., L.H.D.
 Erwin N. Griswold, LL.D.
 Rita P. Kelleher, D.Sc.
 Most Rev. John J. McEleney, S.J., LL.D.
 Cornelius W. Owens, LL.D.
 James J. Shea, LL.D.
 Roger J. Traynor, LL.D.

1969

R. Buckminster Fuller, D.F.A.*
 Katharine Graham, D.Journ.
 Philip J. McNiff, L.H.D.
 Talcott Parsons, D.S.S.
 A. Philip Randolph, J.D.
 Henry Lee Shattuck, D.C.S.
 Terence Cardinal Cooke, J.D.

1970

James Edward Allen, Jr., D.Sc.Ed.
 Rt. Rev. John Melville Burgess, LL.D.
 Joan Ganz Cooney, D.Sc.Ed.
 Sterling Dow, L.H.D.
 Hartford Nelson Gunn, Jr., L.H.D.
 Rev. Bernard Joseph Francis Lonergan, S.J.,
 Hist.Phil.D.
 Elliot Norton, L.H.D.
 Perry Townsend Rathbone, D.F.A.
 The Hon. Earl Warren, D.Sc.L.*

1971

Walter Jackson Bate, H.D.
 Andrew Felton Brimmer, S.S.D.
 Rev. Msgr. George William Casey, Litt.D.
 Mircea Eliade, R.D.
 Eli Goldston, L.L.D.
 Elma Lewis, D.F.A.
 The Hon. Michael Joseph Mansfield, LL.D.*
 William James McGill, S.S.D.
 Most Rev. Humberto Sousa Medeiros, S.T.D.
 Walter George Muelder, D.Sc.T.
 The Hon. Leverett Saltonstall, LL.D.

1972

Mary Ingraham Bunting, D.Sc.
 Arthur Fiedler, D.Mus.
 Northrop Frye, L.H.D.
 John James Griffin, D.C.S.
 Sir William Arthur Lewis, L.H.D.
 Louis Martin Lyons, D.Journ.
 Rev. John Anthony McCarthy, S.J., Litt.D.
 Hildegard Elizabeth Peplau, D.N.S.
 The Hon. Adlai Ewing Stevenson, III, LL.D.*
 The Hon. Walter Edward Washington, LL.D.

1973

A. J. Antoon, L.H.D.
 Harold Bloom, L.H.D.
 Fred J. Borch, S.B.A.
 Vernon E. Jordan, Jr., LL.D.
 John George Kemeny, D.Sc.*
 Daniel Linehan, S.J., D.Sc.
 Thomas Philip O'Neill, Jr., LL.D.

1974

Soia Mentschikoff, LL.D.*
 Thomas L. Phillips, D.B.A.
 The Honorable Carl Thomas Rowan, A.H.D.
 The Honorable Thomas Paul Salmon, LL.D.
 Sir Ronald Syme, L.H.D.
 Henry Bradford Washburn, Jr., L.H.D.

1975

Malnea A. Cass, L.H.D.
 The Honorable Silvio O. Conte, LL.D.
 Rev. Francis J. Gilday, S.J., L.H.D.
 Edward Lewis Hirsh, L.H.D.
 Paul Ricoeur, L.H.D.*
 Vincent Charles Ziegler, D.B.A.

Bicentennial Convocation
Sept. 28, 1975

Thomas Joseph Galligan, Jr., D.B.A.
 Oscar Handlin, L.H.D.
 William J. Harrington, M.D., D.Sc.
 The Honorable Edward Hirsch Levi, LL.D.
 The Reverend Michael Patrick Walsh, S.J., L.H.D.
 Mary Lou Williams, D.A.

1976

Abram Thurlow Collier, D.B.A.
 John Hope Franklin, L.H.D.
 Rev. Martin Patrick Harney, S.J., H.D.
 Mildred Fay Jefferson, D.Sc.
 Asa Smallidge Knowles, D.Sc.Ed.
 Joseph Francis Maguire, LL.D.
 Daniel Patrick Moynihan, LL.D.*

1977

Rev. Raymond Edward Brown, Litt.D.*
 Gerhard D. Bleicken, LL.D.
 Alice Bourneuf, D.Sc.
 James F. McDonough, M.D., D.Sc.
 Maria Tallchief Paschen, D.A.
 Michael Joseph Walsh, Litt.D.

Academic Department Locations

Accounting Department	Fulton 100
Administrative Sciences Department	Fulton 213
Arts and Sciences	Gasson 103
Biology Department	Higgins 321
Center for East Europe, Russia & Asia	Carney 201
Chemistry Department	Devlin 223B
Classical Studies Department	Carney 155
Computer Sciences Department	Fulton 406
Counselor Education and Counseling Psychology Program	McGuinn 314
Counselors:	
Arts and Sciences	Gasson 108
Education	Campion 301
Management	Fulton 205
Nursing	Cushing 103
Curriculum and Instruction Program:	
Director	Campion 219
Early Childhood	Campion 200A
Elementary	Campion 307
Media Specialist	Campion 10
Reading Specialist	Campion 312
Science Education	Campion 219
Secondary Education	Campion 115
Economics Department	Carney 132
Education	Campion 100-104B
Educational Administration and Supervision Program	McGuinn 604
Educational Research, Measurement and Evaluation Program	Campion 319
English Department	Carney 442
Evening College	Fulton 317
Film Study Program	Lyons 407
Finance Department	Fulton 310
Fine Arts Department	Barry Pavilion, Newton Campus
General Business Program	Fulton 215
Geology and Geophysics Department	Devlin 209
Germanic Studies Department	Carney 325
Graduate Arts and Sciences	McGuinn 221
Higher Education Program	Campion 214
History Department	Carney 115
History and Philosophy of Education Program	Campion 313
Honor Programs:	
Arts and Sciences	Gasson 111
Education	Campion 104B
Management	Fulton 100
Law School	Stuart, Newton Campus
Law Department	Fulton 403
Management	Fulton 405
Marketing Department	Fulton 303
Mathematics Department	Carney 317
Music Program	St. Mary's Hall, Newton Campus
Nursing	Cushing 203
Organizational Studies Program	Fulton 217
Philosophy Department	Carney 272
Physics Department	Higgins 355
Political Science Department	McGuinn 200
Psychology Department	McGuinn 349
Religious Education Program	Lyons 215
Romance Languages and Literatures Department	Carney 334

Slavic and Eastern Languages Department
Social Work Graduate School
Sociology Department
Special Education and Rehabilitation Program
Speech Communication and Theatre
Summer Session
Theology Department

Carney 235
McGuinn 132
McGuinn 416
McGuinn B15
McGuinn 500
McGuinn 401
Carney 404

Source: *Boston College Bulletin*

Sources

Admissions Office
Alumni Association
Assessing Engineering Department, City of Boston
Buildings and Grounds Department
Controller's Office
Dean of Faculties
Deans' Offices
Development Office
Dining Department
Director of Space Management
Director of Sports Information
Engineering Department, City of Newton
Financial Aid Office
Health Services Office
Housing Office
Office of Research Administration
Office of Student Activities
Payroll Office
Personnel Office
President's Office
Registrar
Summer Session Office
University Academic Senate
University Librarian
Vice President, Financial and Business Affairs

Bibliography

AAUP Bulletin
"A Guide to the Campus"
Boston College Alumni Directory-1974
Boston College Bulletin-Undergraduate Admissions Information, 1977-78
Boston College Bulletin-University General Catalog, 1977-78
Boston College Information for New Students, 1977-78
Boston College Libraries Handbook
Boston College Physical Facilities
Economic Impact of Colleges & Universities in the Boston Area
Facts about New England Colleges, Universities, and Institutes 1976-77

N.B. Sources are responsible for the accuracy and completeness of data submitted for publication

ACADEMIC CALENDAR

First Semester

1977-78		1978-79
Sept. 4-6	Freshman Orientation	Sept. 3-5
Sept. 6-7	Registration for students not pre-registered	Sept. 5-6
Sept. 7	Classes begin	Sept. 7
Sept. 9	Faculty Convocation	Sept. 8
Oct. 10	Columbus Day - No Classes	Oct. 9
Nov. 11	Veteran's Day - No Classes	
Nov. 23	Thanksgiving Holidays begin at noon	Nov. 22
Dec. 12-13	Study Days - No Classes	Dec. 11-12
Dec. 14-20	Term Examinations	Dec. 13-19
Dec. 21-		Dec. 20-
Jan. 16	Holidays	Jan. 15

Second Semester

Jan. 17	Classes Begin	Jan. 16
Feb. 20-24	Winter Vacation	Feb. 19-23
Mar. 23-27	Holy Thursday - Easter Monday: Easter Recess	April 12-16
April 17	Patriots' Day - No Classes	April 16
May 2-3	Study Days - No Classes	April 30- May 1
May 4-10	Term Examinations	May 2-8
May 22	Monday: Commencement	May 21