

Boston College

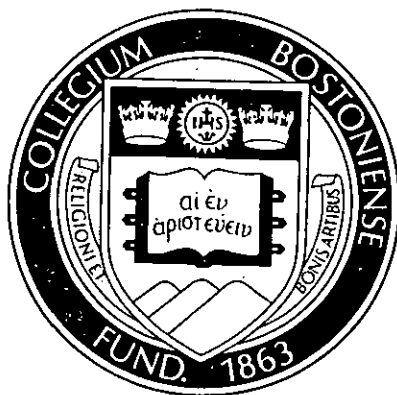
Fact Book

1975



Boston College Fact Book

1975



PREFACE

Although the format has been revised to make it easier to read, and new data added, the 1975 edition of the Boston College Fact Book presents essentially the same information contained in previous issues, with all tables updated to show most recent available statistics. The numbers reflect as accurately as possible the status of the University as of the 1974-75 academic year.

We wish to thank contributors for supplying current data, and typists Janis O'Connell, Ellen Folkard and Shirley Rice for their cooperation and assistance.

Judith Jack, Editor
Office of the Vice President
Financial and Business Affairs

June 17, 1975

BOSTON COLLEGE FACT BOOK

Table of Contents

	<u>Page</u>
Preface	i
Organization Chart.	v
Introduction	vi
Fact Sheet	vii
Campus Maps	viii
Types of Degrees Conferred	x
I. ADMINISTRATION	
Officers of the University	1
Board of Trustees	2
Accreditation of the University	5
Founder and Presidents	6
Honorary Degrees Awarded	9
II. PERSONNEL	
Faculty:	
Full Time Equivalent, by School.	15
Average Compensation by Rank	16
By School and Rank	17
By Highest Earned Degree and Rank	18
By Highest Earned Degree and Sex	19
By Rank and Sex	20
By School and Sex	21
By School and Tenure Status.	22
Non-faculty Personnel:	
By Classification and Sex	23
By Category and Sex.	24
University Academic Senate	
Membership Classification	25
Membership List 1974-75	26

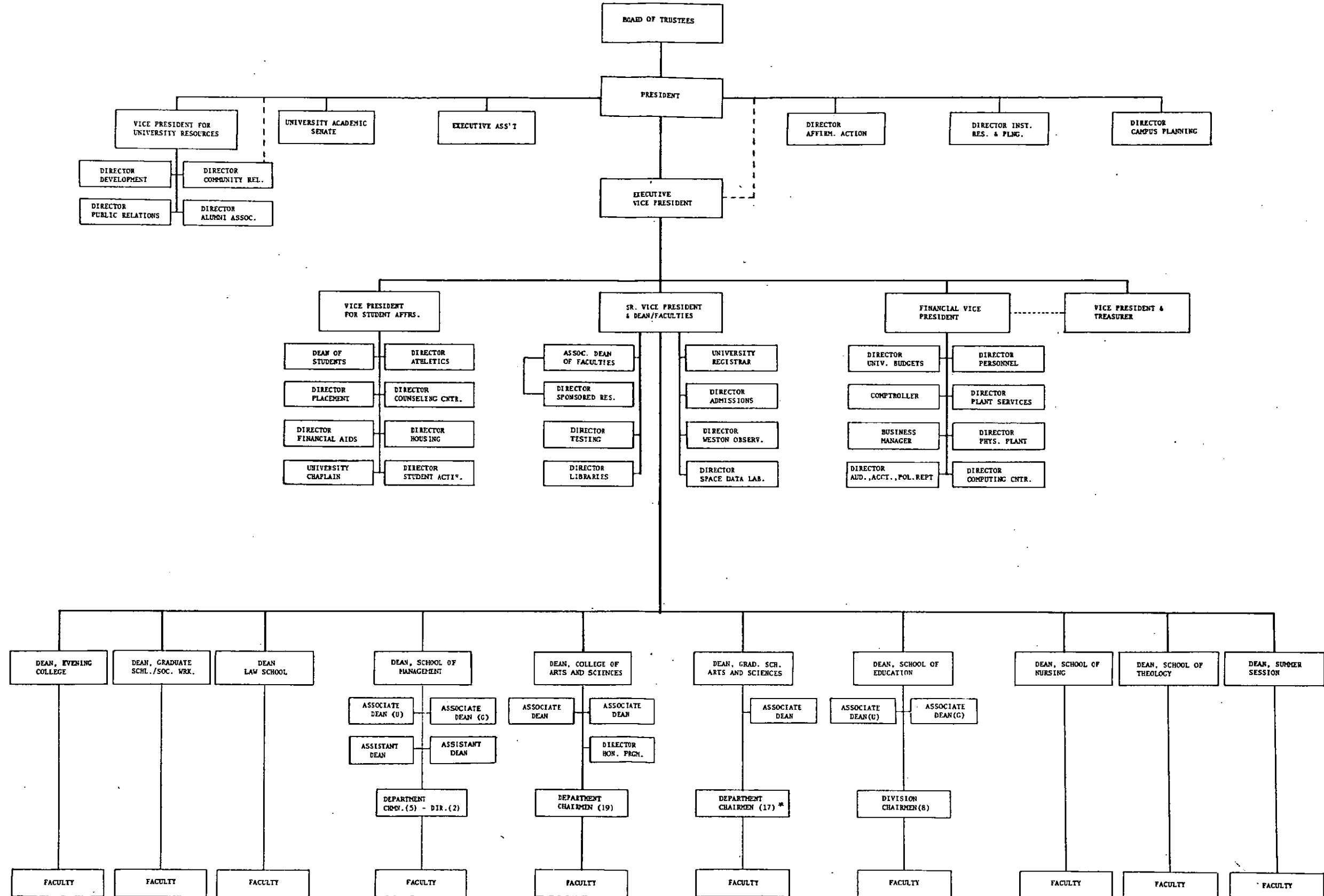
	<u>Page</u>
III. FINANCE	
Revenues and Expenditures	29
Contracts and Grants	30
IV. PHYSICAL PLANT	
Facilities Inventory	31
Building Acquisition	32
Building Acquisition - Newton Campus	34
Classroom Use	35
V. STUDENTS	
Freshman Applications and Enrollment	36
SAT Averages by Class	37
Geographic Distribution: Class of '78	38
Undergraduate Transfer Students:	
by Year and Sex	39
by Types of Previous Institution.	40
Academic Year Enrollment:	
1969-70 through 1974-75	41
Full Time Equivalent	42
Undergraduate, by School	43
Graduate, by School	44
By Sex	45
Summer School Enrollment	47
International Student Enrollment.	48
Degrees Conferred:	
Undergraduate by Major	49
Graduate and Professional	51
Financial Aid:	
Undergraduate, Dollars	52
Undergraduate, Number of Students	53
Athletics:	
Sports at Boston College	54
Varsity Sports Records	55
Boston College Health Service	56

	<u>Page</u>
VI. LIBRARIES	
Holdings by Individual Libraries	57
Expenditures for Books	58
Volume Acquisitions	59
Circulation Statistics	59
VII. ALUMNI	
Geographic Analysis by State	60
New England	61



BOSTON COLLEGE

Organizational Structure



*Excl. Ed. & Nur.

INTRODUCTION

Boston College was founded in 1863 by Rev. John McElroy, S.J. It is the third largest Catholic university in America, and is comprised of thirteen schools, colleges and institutes offering fifteen degree programs and one certification program. In 1975 Boston College was accredited by or a member of twenty-two professional organizations and accrediting agencies. Rev. J. Donald Monan, S.J. became the twenty-fourth president of Boston College in September 1972. Two campuses, located in Newton and Boston, span 157 acres and include more than 100 buildings.

BOSTON COLLEGE FACT SHEET

	<u>1973-74</u>	<u>1974-75</u>
ADMISSIONS		
Applicants	8,358	8,377
Acceptances:		
Men	913	1,144
Women	874	1,008
Total freshman class	<u>1,787</u>	<u>2,152</u>
ENROLLMENT		
Undergraduate:		
Men	4,700	4,745
Women	4,041	4,473
Total	<u>8,741</u>	<u>9,218</u>
Graduate:		
Men	2,022	1,831
Women	1,618	1,700
Total	<u>3,640</u>	<u>3,531</u>
Total enrollment	12,381	12,749
DEGREES CONFERRED		
Undergraduate	1,759	NA
Graduate and professional	1,120	NA
Total	<u>2,879</u>	
FACULTY		
Full time:		
Men	398	395
Women	125	125
Total	<u>523</u>	<u>520</u>
Percent tenured	54%	58%
Percent doctorate	64%	68%
Part time	176	211
Teaching Fellows	91	110
ADMINISTRATIVE STAFF		
Men	494	551
Women	467	496
Total	<u>961</u>	<u>1,047</u>
LIBRARIES (total holdings)	902,013	901,427
FINANCE		
Revenues (thousands)	\$43,132	\$48,311*
Expenditures (thousands)	\$43,020	\$48,213*
CONTRACTS AND GRANTS	\$ 6,537	\$ 7,375*
ALUMNI	54,847	55,443

*Estimated

Types of Degrees Conferred
at Boston College

Bachelor of Arts (A.B.)
Bachelor of Science (B.S.)
Master of Arts (A.M.)
Master of Arts in Teaching (M.A.T.)
Master of Business Administration (M.B.A.)
Master of Education (M.Ed.)
Master of Science (M.S.)
Master of Science in Teaching (M.S.T.)
Master of Social Planning (M.S.P.)
Master of Social Work (M.S.W.)
Master of Theology (Th.M.)
Certificate of Advanced Educational
Specialization (C.A.E.S.)
Bachelor of Divinity (B.D.)
Doctor of Law (J.D.)
Doctor of Education (D.Ed.)
Doctor of Philosophy (Ph.D.)

Source: Secretary of the University

ADMINISTRATION

OFFICERS OF THE UNIVERSITY

President	J. Donald Monan, S.J.
Executive Vice President	Francis B. Campanella
Senior Vice President and Dean of Faculties	Charles F. Donovan, S.J.
Vice President for University Resources	Robert J. Desmond
Vice President and Treasurer	Thomas Fleming, S.J.
Vice President of Student Affairs	James P. McIntyre
Secretary of the University	Francis B. McManus, S.J.
Vice President, Financial and Business Affairs	John R. Smith
Vice President, Assistant to the President	Margaret A. Dwyer

Source: Secretary of the University

BOARD OF TRUSTEES

1974-75

William L Brown
President and Director
The First National Bank of Boston

James Cleary
President and Chief Executive Officer
Blyth Eastman Dillon and Company

William F. Connell
President and Director
Ogden Leisure, Inc.

Joseph F. Cotter*
Senior Vice President and Controller
ITT-Sheraton Corporation

Rev. James H. Coughlin, S.J. ('40)
Academic Vice President
Fairfield University

Rev. Joseph R. Fahey, S.J. ('60)
Academic Dean
College of the Holy Cross

John T. Fallon
President
R. M. Bradley, Inc.

Maureen Foley ('71)
Boston Children's Hospital

Sister Jean Ford, R.S.C.J.
Provincial
Society of the Sacred Heart

Thomas J. Galligan* ('41)
President
Boston Edison Company

Avram Goldberg
President
The Stop and Shop Companies

Dr. Patricia A. Goler
Chairman, Department of History
Lowell State College

Mary Lai
Treasurer
Long Island University

T. Vincent Learson
Chairman of the Board (retired)
International Business Machines

S. Joseph Loscocco ('43)
330 Dartmouth Street
Boston, Massachusetts

John Lowell*
Welch & Forbes

Rev. Joseph F. MacDonnell, S.J. ('50)
Fairfield University

Rev. Francis C. Mackin, S.J. ('51)
Provost
Fordham University at Lincoln Center

Rev. Leo J. McGovern, S.J.
Vice Provincial of Communities
Society of Jesus of New England

Rev. Robert A. Mitchell, S.J.
President
U.S. Jesuit Conference

Rev. J. Donald Monan, S.J.*
President
Boston College

Giles E. Mosher, Jr. ('55)
Chairman of the Board
Newton-Waltham Bank & Trust Company

The Honorable David S. Nelson ('57)
Magistrate
Superior Court of Massachusetts

Rev. Francis J. Nicholson, S.J. ('42)
Rector of the Jesuit Community
Boston College

Rev. William J. O'Halloran, S.J.* ('51)
Chairman, Department of Psychology
College of the Holy Cross

Rev. Joseph A. O'Hare, S.J.
Associate Editor
America Magazine

Robert J. O'Keefe
Senior Vice President
Chase Manhattan Bank

James P. O'Neill ('42)
Senior Vice President
Xerox Corporation

The Honorable Thomas P. O'Neill, Jr. ('36)
Member of Congress
House Majority Leader

Cornelius W. Owens* ('36)
Executive Vice President
American Telephone and Telegraph Company

Rev. John P. Reboli, S.J.
College of the Holy Cross

Rev. Joseph L. Shea, S.J. ('40)
President
Cheverus High School
Portland, Maine

Rev. Michael P. Walsh, S.J.* ('34)
Chairman of the Board
Boston College High School

Thomas J. Watson, III
Attorney
Gaston Snow & Ely Bartlett

Thomas J. White
President and Treasurer
J. F. White Contracting Company

Vincent Ziegler
Chairman of the Board
The Gillette Company, Inc.

*Member of Executive Committee

Source: President's Office

ACCREDITATION OF THE UNIVERSITY

The American Association of Colleges for Teacher Education
The American Assembly of Collegiate Schools of Business
The American Association of Theological Schools
The American Association of University Women
The American Bar Association
The American Chemical Society
The American Council on Education
The Association of American Colleges
The Association of American Law Schools
The Association of University Evening Colleges
The Association of Urban Universities
The Board of Regents of the University of New York
The College Entrance Examination Board
The Council of Graduate Schools
The Council on Social Work Education
The Jesuit Educational Association
The International Association of Universities
The International Association of Catholic Universities
The National Catholic Education Association
The National Commission on Accrediting
The National League for Nursing
The England Association of Colleges and Secondary Schools

Source: Boston College Bulletin

FOUNDER OF BOSTON COLLEGE

Rev. John McElroy, S.J. Pastor, Immaculate Conception Parish,
Boston 1861-1863

PRESIDENTS OF BOSTON COLLEGE

1. Rev. John Bapst, S.J. 1863-1869

Incorporation of the Jesuit Scholasticate at
Boston as Boston College (1863). Admission
of lay students (September, 1864).
2. Rev. Robert W. Brady, S.J. 1869-1870
3. Rev. Robert Fulton, S.J. 1870-1880
4. Rev. Jeremiah O'Conner, S.J. 1880-1884

Establishment of Athletic Association (1883).
5. Rev. Edward V. Boursaud, S.J. 1884-1887

Alumni Association founded (1886).
6. Rev. Thomas H. Stack, S.J. 1887
7. Rev. Nicholas Russo, S.J. 1887-1888
8. Rev. Robert Fulton, S.J. 1888-1891
9. Rev. Edward I. Devitt, S.J. 1891-1894
10. Rev. Timothy Brosnahan, S.J. 1894-1898
11. Rev. W. G. Read Mullan, S.J. 1898-1903

Separation of preparatory courses leading to
the establishment of Boston College High
School (1902).

PRESIDENTS OF BOSTON COLLEGE
(cont.)

12. Rev. William F. Gannon, S.J. 1903-1907

13. Rev. Thomas I. Gasson, S.J. 1907-1914

Purchase of Chestnut Hill campus (1907).
First classes held in the Tower Building
(March, 1913).

14. Rev. Charles W. Lyons, S.J. 1914-1919

15. Rev. William Devlin, S.J. 1919-1925

Graduate program in education inaugurated
(1919). Summer School established, which
included the enrolling of women students
for the first time, under the direction
of Rev. James F. Mellyn, S.J. (1924).

16. Rev. James H. Dolan, S.J. 1925-1932

Expansion of the University to include the
Graduate School of Arts and Sciences with
Rev. John B. Creeden, S.J. as dean (1926);
the School of Philosophy with Rev. Arthur
J. Sheehan, S.J. as dean (1927); and the
Law School with Dennis A. Dooley as dean
(1929).

17. Rev. Louis J. Gallagher, S.J. 1932-1937

Establishment of the School of Social Work
under the deanship of Rev. Walter McGuinn, S.J.
(1936).

PRESIDENTS OF BOSTON COLLEGE
(cont.)

18. Rev. William J. McGarry, S.J. 1937-1939
Founding of the College of Business Administration with Rev. James J. Kelley, S.J. as dean.
19. Rev. William J. Murphy, S.J. 1939-1945
20. Rev. William L. Keleher, S.J. 1945-1951
Establishment of the School of Nursing with Mary A. Maher as dean (1947).
21. Rev. Joseph R. N. Maxwell, S.J. 1951-1957
Establishment of the School of Education with Rev. Charles Donovan, S.J. as dean (1952).
22. Rev. Michael P. Walsh, S.J. 1957-1968
23. Rev. W. Seavey Joyce, S.J. 1968-1972
24. Rev. J. Donald Monan, S.J. 1972-

HONORARY DEGREES AWARDED BY BOSTON COLLEGE
1952-1973

1952

Gregory Peter XV Cardinal Agagianian, LL.D. (January 14, 1952)
James B. Connolly, Litt.D.
James M. O'Neill, LL.D.
Most Rev. Thomas F. Markham, LL.D., Commencement Speaker
Rt. Rev. Thomas J. Riley, LL.D.
James J. Ronan, LL.D.

1953

Dorothy L. Book, LL.D.
Most Rev. James L. Connolly, LL.D.
Clifford J. Laube, Litt.D.
Francis J. O'Halloran, A.M.
Most Rev. Leonard J. Raymond, LL.D., Commencement Speaker
Alex Ross, A.M.
John C. H. Wu, LL.D.

1954

Edward H. Chamberlin, LL.D.
John J. Hearne, LL.D., Commencement Speaker
James W. Manary, Sc.D.
Thomas A. Printon, LL.D.
Ven. Bro. William Sheehan, C.F.X., LL.D.
Most Rev. Christopher J. Weldon, LL.D.
Louis de Wohl, Litt.D.
William J. O'Keefe, LL.D. (November 21, 1954)

1955

Fred J. Driscoll, LL.D.
Christian A. Herter, LL.D.
Edward A. Hogan, Jr., LL.D., Commencement Speaker
Rear Adm. Bartholomew W. Hagan, Sc.D.
John B. Hynes, LL.D.
His Beatitude Maximus IV, LL.D. (August 23, 1955)
Valerian Cardinal Gracias, LL.D.
Russel Kirk, Litt.D.
Edward A. Sullivan, LL.D.

HONORARY DEGREES AWARDED BY BOSTON COLLEGE
(cont.)

1956

Bartholomew A. Brickley, LL.D.
Peter J. W. Debye, Sc.D.
Most Rev. Frederick A. Donaghy, LL.D.
The Hon. John F. Kennedy, LL.D., Commencement Speaker
John W. King, LL.D.
Charles Munch, D.Mus.
Edward F. Williams, LL.D.

1957

Wallace E. Carroll, LL.D.
Arthur J. Kelly, LL.D.
Augustus C. Long, LL.D., Commencement Speaker
Adrian O'Keefe, LL.D.
Very Rev. Msgr. Patrick W. Skehan, LL.D.
Nils Y. Wessell, LL.D.

1958

Most Rev. Amleto G. Cicognani, D.D., LL.D. (April 21, 1958)
Carl J. Gilbert, LL.D.
Paul Horgan, Litt.D.
Barnaby C. Keeney, LL.D., Commencement Speaker
Henry M. Leen, LL.D.
Jacques Maritain, LL.D.
Raissa Maritain, LL.D.
Harold Marston Morse, D.Sc.
Rev. John B. Sheerin, C.S.P., LL.D.
His Eminence Francis Cardinal Spellman, LL.D. (December 8, 1958)

1959

His Excellency Sean T. O'Kelly, LL.D. (March 22, 1959)
Ernest Henderson, LL.D.
Rev. John LaFarge, S.J., LL.D.
Henry Cabot Lodge, LL.D.
George Meany, LL.D.
Carlos P. Romulo, LL.D., Commencement Speaker
Helen C. White, Litt.D.

HONORARY DEGREES AWARDED BY BOSTON COLLEGE
(cont.)

1960

Marian Anderson, S.Mus.
J. Peter Grace, LL.D.
Caryl P. Haskins, LL.D.
Robert F. Kennedy, LL.D.
Charles Malik, LL.D., Commencement Speaker
Most. Rev. Russell J. McVinney, D.D., LL.D.
Samuel Eliot Morison, LL.D.
Rt. Rev. Matthew P. Stapleton, LL.D.
Rev. Henry M. Brock, S.J., D.Sc. (October 12, 1960)

1961

Allen W. Dulles, LL.D.
Anthony Julian, LL.D.
Robert D. Murphy, LL.D., Commencement Speaker
Louis R. Perini, LL.D.
Abraham Ribicoff, LL.D.
Rt. Rev. Robert J. Sennott, LL.D.
Edward Teller, LL.D.

1962

Detlev W. Bronk, D.Sc., Commencement Speaker
Ralph J. Bunche, LL.D.
Christopher J. Duncan, M.D., LL.D.
Sir Alec Guinness, D.F.A.
Rt. Rev. Francis J. Lally, Litt.D.
Ralph Lowell, LL.D.
Phyllis McGinley, Litt.D.
Perry G. Miller, Litt.D.

1963

Augustin Cardinal Bea, S.J., J.U.D. (March 26, 1963)
Very Rev. Edward B. Bunn, S.J., LL.D.
Lady Barbara Ward Jackson, Litt.D.
Nathan Marsh Pusey, L.H.D.
Bruce Catton, Litt.D.
Anthony Joseph Celebrezze, LL.D., Commencement Speaker
Arthur Joseph Goldberg, LL.D.
John Jay McCloy, LL.D.

HONORARY DEGREES AWARDED BY BOSTON COLLEGE
(cont.)

1963 (cont.)

James Barrett Reston, LL.D.
Rt. Rev. John Joseph Ryan, L.H.D.
Jose Luis Sert, Litt.D.
Joseph Leo Sweeney, LL.D.
Robert Clifton Weaver, LL.D.
James Edwin Webb, D.Sc.

1964

John Coleman Bennett, LL.D.
Henri Maurice Peyre, LL.D.
Most Rev. Ernest John Primeau, LL.D.
Sidney R. Rabb, L.H.D.
Paul Anthony Samuelson, LL.D.
Very Rev. Joseph L. Shea, S.J., LL.D.
Robert Sargent Shriver, Jr., LL.D., Commencement Speaker
Mrs. Mary Sullivan Stanton, LL.D.

1965

John P. Birmingham, LL.D.
Robert McAfee Brown, LL.D.
J. N. Douglas Bush, Litt.D.
Victor L. Butterfield, L.H.D.
John T. Connor, LL.D.
Edith Green, LL.D.
Rev. John Courtney Murray, S.J., L.H.D., Commencement Speaker
Rt. Rev. Lawrence J. Riley, LL.D.
Alan T. Waterman, D.Sc.

1966

Most Rev. John W. Comber, MM, D.D., L.H.D.
Edward F. Gilday, L.H.D.
Edward M. Kennedy, LL.D.
Francis Keppel, LL.D., Commencement Speaker
Mother Eleanor M. O'Byrne, R.S.C.J., LL.D.
Stephen P. Mugar, LL.D.
Abram L. Sachar, L.H.D.
Rene Wellek, Litt.D.
George Wells Beadle, D.Sc.

HONORARY DEGREES AWARDED BY BOSTON COLLEGE
(cont.)

1966 (cont.)

William Bosworth Castle, M.D., L.H.D.
Donald Frederick Hornig, LL.D.
James Alfred Van Allen, D.Sc.

1967

Sarah Caldwell, Litt.D.
Richard Palmer Chapman, LL.D.
Very Rev. John Francis Fitzgerald, C.S.P., L.H.D.
John Kenneth Galbraith, LL.D.
John William Gardner, LL.D., Commencement Speaker
Everett Cherrington Hughes, LL.D.
John Anthony Volpe, LL.D.

1968

Kingman Brewster, LL.D., Commencement Speaker
Rev. Henri de Lubac, S.J., L.H.D.
Erwin N. Griswold, LL.D.
Rita P. Kelleher, D.Sc.
Most Rev. John J. McEleney, S.J., LL.D.
Cornelius W. Owens, LL.D.
James J. Shea, LL.D.
Roger J. Traynor, LL.D.

1969

R. Buckminster Fuller, D.F.A., Commencement Speaker
Katharine Graham, D.Journ.
Philip J. McNiff, L.H.D.
Talcott Parsons, D.S.S.
A. Philip Randolph, J.D.
Henry Lee Shattuck, D.C.S.
Terence Cardinal Cooke, J.D.

1970

James Edward Allen, Jr., D.Sc.Ed.
Rt. Rev. John Melville Burgess, LL.D.
Joan Ganz Cooney, D.Sc.Ed.

HONORARY DEGREES AWARDED BY BOSTON COLLEGE
(cont.)

1970

Sterling Dow, L.H.D.
Hartford Nelson Gunn, Jr., L.H.D.
Rev. Bernard Joseph Francis Lonergan, S.J., Hist.Phil.D.
Elliot Norton, L.H.D.
Perry Townsend Rathbone, D.F.A.
The Hon. Earl Warren, D.Sc.L., Commencement Speaker

1971

Walter Jackson Bare, H.D.
Andrew Felton Brimmer, S.S.D.
Rev. Msgr. George William Casey, Litt.D.
Mircea Eliade, R.D.
Eli Goldston, L.L.D.
Elma Lewis, D.F.A.
The Hon. Michael Joseph Mansfield, LL.D., Commencement Speaker
William James McGill, S.S.D.
Most Rev. Humberto Sousa Medeiros, S.T.D.
Walter George Muelder, D.Sc.T.
The Hon. Leverett Saltonstall, LL.D.

1972

Mary Ingraham Bunting, D.Sc.
Arthur Fiedler, D.Mus.
Northrop Frye, L.H.D.
John James Griffin, D.C.S.
Sir William Arthur Lewis, L.H.D.
Louis Martin Lyons, D.Journ.
Rev. John Anthony McCarthy, S.J., Litt.D.
Hildegarde Elizabeth Peplau, D.N.S.
The Hon. Adlai Ewing Stevenson, III, LL.D., Commencement Speaker
The Hon. Walter Edward Washington, LL.D.

1973

A. J. Antoon, L.H.D.
Harold Bloom, L.H.D.
Fred J. Borch, S.B.A.
Vernon E. Jordan, Jr., LL.D.
John George Kemeny, D.Sc. Commencement Speaker
Daniel Linehan, S.J., D.Sc.
Thomas Philip O'Neill, Jr., LL.D.

1974

Soia Mentschikoff, LL.D. (Commencement Speaker)
Thomas L. Phillips, D.B.A.
The Honorable Carl Thomas Rowan, A.H.D.
The Honorable Thomas Paul Salmon, LL.D.
Sir Ronald Syme, L.H.D.
Henry Bradford Wasburn, Jr., L.H.D.

PERSONNEL

Full-Time Equivalent Faculty
by School
1974-75

	<u>Full Time</u>	<u>FTE of Part Time</u>	<u>Total FTE Faculty</u>
Arts and Sciences	313	56.35	369.35
Education**	59	17.33	76.33
School of Management	50	8.00	58.00
Nursing*	56	11.17	67.17
Law	25	7.50	32.50
Social Work	<u>17</u>	<u>4.83</u>	<u>21.83</u>
Total**	<u>520</u>	<u>105.18</u>	<u>625.18</u>

*Graduate faculty of the departments of Education and Nursing of the Graduate School of Arts and Sciences are included in this table with their respective schools.

**Does not include 23 full time academic administrators and 21 full time academic directors.

Source: Office of the Dean of Faculties

FACULTY

Average Compensation by Rank*
 AAUP Category I
 (1973-74 9-month equivalent)

<u>Rank</u>	<u>Boston College</u>	<u>All Combined Category</u>	<u>Church- Related</u>
Professor	\$23,600	\$24,961	\$22,498
Associate	18,700	18,325	17,558
Assistant	15,500	15,020	14,306
Instructor	12,900	11,638	11,495

*Includes salary and fringe benefits.

Source: AAUP Bulletin, Summer 1974

Faculty by School and Rank
1974-75

	Professor		Associate		Assistant		Instructor		Total	
	No.	%	No.	%	No.	%	No.	%	No.	%
A&S	66	21%	102	32%	122	40%	23	7%	313	60%
Education	16	27	11	19	18	30	14	24	59	11
SOM	9	18	18	36	13	26	10	20	50	10
Nursing	-	-	14	25	15	27	27	48	56	11
Law	16	64	3	12	3	12	3	12	25	5
Social Work	<u>1</u>	6	<u>11</u>	65	<u>5</u>	29	<u>-</u>	-	<u>17</u>	3
Total*	<u>108</u>	20%	<u>159</u>	31%	<u>176</u>	34%	<u>77</u>	15%	<u>520</u>	100%

**Excluding part time lecturers, special contracts, and academic administrators

Source: Office of the Dean of Faculties

Faculty by Highest Earned Degree and Rank
1974-75

Degree	Professor		Associate		Assistant		Instructor		Total	
	No.	%	No.	%	No.	%	No.	%	No.	%
Doctorate	98	28%	138	39%	118	33%	-	-	354	69%
First professional*	8	24	5	15	15	46	5	15	33	6
Masters	2	2	15	12	42	33	68	53	127	24
Bachelors	-	-	-	-	1	17	5	83	6	1
Total**	<u>108</u>	21%	<u>158</u>	30%	<u>176</u>	34%	<u>78</u>	15%	<u>520</u>	100%

*Including LLB, JD, STB, PhL, and STL

**Excluding part time lecturers, special contracts and academic administrators.

Source: Office of the Dean of Faculties

Faculty By Highest Earned Degree and Sex

1974-75

<u>Degree</u>	<u>Women</u>		<u>Men</u>		<u>Total</u>	
	<u>No.</u>	<u>%</u>	<u>No.</u>	<u>%</u>	<u>No.</u>	<u>%</u>
Doctorate	56	44.8%	301	76.2%	357	68.7%
First Professional*	3	2.4	17	4.3	20	3.8
Masters	65	52.0	73	18.5	138	26.5
Bachelors	<u>1</u>	.8	<u>4</u>	1.0	<u>5</u>	1.0
Total	<u>125</u>		<u>395</u>		<u>520</u>	

*Including LLB, JD, PhL, and STL.

**Excluding part time lecturers, special contracts and academic administrators.

Source: Office of the Dean of Faculties

Faculty by Rank and Sex
1974-75

	Women		Men		Total	
	<u>No.</u>	<u>%</u>	<u>No.</u>	<u>%</u>	<u>No.</u>	<u>%</u>
Professor	7	6%	101	26%	108	21%
Associate	33	26	126	32	159	31
Assistant	48	38	128	32	176	33
Instructor	<u>37</u>	30	<u>40</u>	10	<u>77</u>	15
Total*	<u>125</u>		<u>395</u>		<u>520</u>	

*Excluding special contracts and academic administrators.

Source: Office of the Dean of Faculties

Faculty by School and Sex

1974-75

	Women		Men		Total	
	<u>No.</u>	<u>%</u>	<u>No.</u>	<u>%</u>	<u>No.</u>	<u>%</u>
A&S	45	32.2%	272	69.0%	313	60.2%
Education*	17	14.0	42	10.7	59	11.3
SOM	1	.8	49	12.0	50	9.6
Nursing*	56	45.0	-	-	56	10.8
Law	2	1.6	23	6.0	25	4.8
Social Work	<u>8</u>	6.4	<u>9</u>	2.3	<u>17</u>	3.3
Total**	<u>125</u>		<u>395</u>		<u>520</u>	

*Graduate faculty in the departments of Education and Nursing of the Graduate School of Arts and Sciences are included in this table with their respective undergraduate schools.

**Totals in distribution do not include part time staff, or academic administrators.

Source: Office of Dean of Faculties

Faculty by School and Tenure Status

1974-75

School	Tenured		Non-tenured		Total	
	No.	%	No.	%	No.	%
A&S	207	66%	106	34%	313	60%
Education*	29	49	30	51	59	11
SOM	20	40	30	60	50	10
Nursing*	17	30	39	70	56	11
Law	16	64	9	36	25	5
Social Work	<u>11</u>	65	<u>6</u>	35	<u>17</u>	3
Total**	<u>300</u>	58%	<u>220</u>	42%	<u>520</u>	100%

*Graduate faculty in the departments of Education and Nursing of the Graduate School of Arts and Sciences are included in this table with their respective undergraduate schools.

**Totals in distribution do not include part time staff or academic administrators.

Source: Office of the Dean of Faculties

NON-FACULTY PERSONNEL
By Classification and Sex

CLASSIFICATION	1974			1975		
	Men	Women	Total	Men	Women	Total
<u>Administrative</u>						
Directors	35	8	43	35	8	43
Assistant or associate director	26	10	36	26	10	36
Professional/administra- tive staff	92	66	158	92	66	158
Sponsored program staff	35	24	59	38	25	63
Total	188	108	296	191	109	300
<u>Secretarial/Clerical</u>						
Level 9	-	7	7	-	7	7
Level 11	11	61	72	12	65	77
Level 13	1	100	101	98	3	95
Level 15	8	87	95	3	95	98
Level 17	1	51	52	1	50	51
Level 19	3	10	13	3	11	14
Total	24	316	340	26	310	336
<u>Physical Plant</u>						
Maintenance	118	12	130	119	12	131
Tradesmen	46	1	47	47	1	48
Supervisor	18	-	18	18	-	18
Total	182	13	195	184	13	197
<u>Other*</u>						
Nurses	-	11	11	-	11	11
Research ass't-para- professional	3	1	4	3	2	5
Service employees	15	2	17	15	2	17
Weston Observatory	3	-	3	3	-	3
St. Mary's	42	2	44	42	2	44
Computer Center	3	-	3	3	-	3
Security	30	-	30	30	-	30
Switchboard	4	15	19	50	33	83
Food service	-	-	-	4	14	18
Total	100	31	130	150	64	214
TOTAL NON-FACULTY PERSONNEL	494	467	961	551	496	1,047

*Employees not classifiable in any of the preceding categories.

Source: Director of Personnel

NON-FACULTY PERSONNEL

By Category and Sex

	1974					
	Men		Women		Total	
	No.	%T*	No.	%T*	No.	%T*
Administrative	188	19.6%	108	11.2%	296	30.8%
Secretarial/Clerical	24	2.5	316	32.9	340	35.4
Physical Plant	182	18.9	13	1.4	195	20.3
Other	<u>100</u>	10.4	<u>30</u>	3.1	<u>130</u>	13.5
Total	<u>494</u>	51.4%	<u>467</u>	48.6%	<u>961</u>	100.0%

	1975					
	Men		Women		Total	
	No.	%T	No.	%T	No.	%T
Administrative	191	18.2%	109	10.4%	300	28.7%
Secretarial/Clerical	26	2.5	310	29.6	336	32.1
Physical Plant	184	17.6	13	1.2	197	18.8
Other	<u>150</u>	14.3	<u>64</u>	6.1	<u>214</u>	20.4
Total	<u>551</u>	52.6%	<u>496</u>	47.4%	<u>1,047</u>	100.0%
% increase from 1974		<u>11.5%</u>		<u>6.2%</u>		<u>8.9%</u>

*%T = percent of total non-faculty personnel.

Source: Director of Personnel

UNIVERSITY ACADEMIC SENATE

Membership Classification

(1974-75)

Classification		Total
Faculty		30
Arts and Sciences	17	
Education	3	
Management	3	
Nursing	3	
Law	2	
Social Work	2	
Administration		18
Undergraduate Students		16
Arts and Sciences	10	
Education	1	
Management	2	
Nursing	2	
Evening College	1	
Graduate Students		3
Law	1	
Management	1	
Social Work	1	
TOTAL		67

Source: Corresponding Secretary, U.A.S.

UNIVERSITY ACADEMIC SENATE

MEMBERSHIP LIST - 1974-75

ELECTED FACULTY SENATORS

College of Arts and Sciences

Prof. George Brown - Geology - Devlin '75
Rev. Edward Callahan, S.J. - Theology - Cushing '75
Rev. David Carroll, S.J. - Theology - Roberts '76
Prof. Leonard Casper - English - Carney '76
Rev. Robert Cheney, S.J. - Economics - Carney '76
Rev. Charles J. Healey, S.J. - Theology - Carney '76
Prof. Diana Hyman - Romance Languages - Carney '75
Prof. David A. Karp - Sociology - McGuinn '77
Prof. Antonio C. Mastrobuono - Romance Languages - Carney '76
Prof. Kristin Morrison - English - Carney '75
Rev. Gerard O'Brien, S.J. - Philosophy - Carney '76
Prof. Thomas Owens - Philosophy - Carney '76
Prof. David Rasmussen - Philosophy - Carney '75
Rev. Daniel Shine, S.J. - Philosophy - Carney '76
Prof. Dennis D. Taylor - English - Carney '77
Prof. Richard Tresch - Economics - Carney '76
Dr. Patrick Wreath - Library - Bapst '77

School of Management

Prof. Louis S. Corsini - Accounting - Fulton '76
Prof. Kenneth E. Frantz - Finance - Fulton '75
Prof. John J. Neuhauser - Computer Science Program - Fulton '77

School of Education

Prof. Michael Anello - Education - Champion '76
Prof. John Jensen - Education - Champion '75
Prof. Ronald Nuttall - Education - McGuinn '76

School of Nursing

Prof. Marjorie Gordon - Nursing - Cushing '75
Prof. Elizabeth Koundakjian - Nursing - Cushing '77
Prof. Nancy McCarthy - Nursing - Cushing '76

Law School

Prof. John M. Flackett - Law - More '77
Prof. Paul R. McDaniel - Law - More '77

MEMBERSHIP LIST - 1974-75

Graduate School of Social Work

Prof. Dwight S. Adams - Social Work - McGuinn '77
Prof. Carolyn Thomas - Social Work - McGuinn '76

Non-Teaching Faculty

Rev. Edward J. Hanrahan, S.J. - Dean of Students - McElroy '75
Ms. Patricia Hurley - Financial Aid - Gasson '77

Ex-Officio Members

Miss Jeanne Aber - Acting Director of Libraries - Bapst
Dr. Edmund Burke - Dean, Graduate School of Social Work - McGuinn
Dr. Mary Dineen - Dean, School of Nursing - Cushing
Rev. Charles F. Donovan, S.J. - Dean of Faculties - Hopkins
Prof. Richard Huber - Dean, Law School - More
Dr. Albert Kelley - Dean, School of Management - Fulton
Dr. James P. McIntyre - Vice President for Student Affairs - Brock
Rev. J. Donald Monan, S.J. - President - Botolph
Rev. Thomas P. O'Malley, S.J. - Dean, College of A & S - Gasson
Dr. Lester Przewlocki - Dean, School of Education - Champion
Mr. John Smith - Financial Vice President - Gasson
Dr. Donald J. White - Dean, Graduate School of A & S - McGuinn
Rev. James Woods, S.J. - Dean of Evening College and Registrar - Lyons

Appointed Administrators

Dr. Alice Jeghelian - Director of Affirmative Action - McGuinn
Dr. John Maguire - Dean of Admissions - Gasson
Rev. Paul Nash, S.J. - Assistant to Dean of Faculties - Hopkins

Undergraduate Senators

Linda Bucci, A & S
Hugh Burns, A & A
Mary Cormican, Ed.
Wayne Davies, SOM
Raymond Delgado, A & S
Duane Deskins, A & S
Joseph D'Onofrio, A & S
Jeffrey Graeber,
William Grieco, A & S
Carol Hamill, Nur.
Michael Hugo, SOM
Josephine Paradiso, Evening
Robert Peterkin, A & S
Diane Ring, Nur.
Susan Santos, A & S
Dwight Thompson, A & S

Graduate Senators

Paul Faircloth, Social Work
Steven Hays, SOM
Joseph Pignatelli, Jr., Law

MEMBERSHIP LIST - 1974-75

Officers

Augustus Fabens - Moderator
John Jensen - Vice Moderator
William Grieco - Secretary

Executive Committee

Linda Bucci
Duane Deskins
Rev. Charles F. Donovan, S.J.
Carol Hamill
Elizabeth Koundakjian
John Neuhauser
Rev. Daniel Shine, S.J.
Dennis Taylor

Rev. J. Donald Monan, S.J. - ex officio

Source: Corresponding Secretary, U.A.S.

FINANCE

REVENUES AND EXPENDITURES

(in thousands)

Revenues

	<u>1972-73</u>	<u>1973-74</u>
Tuition and fees	\$25,204	\$27,398
Contracts and grants	6,751	7,082
Organized activities	1,164	1,148
General:		
Gifts, investments and other income	1,552	1,786
Auxiliary enterprises	<u>5,138</u>	<u>5,718</u>
Total revenues	<u>\$39,809</u>	<u>\$43,132</u>

Expenditures

Educational and General

Instructional	13,744	13,651
Organized activities	1,912	1,926
Sponsored research	5,330	5,721
Other	11,593	11,601
Mandatory transfers: interest, principal, loan funds, plant loans	<u>812</u>	<u>944</u>
	33,391	33,843
Auxiliary enterprises:		
Expenditures	5,187	5,504
Principal and interest	641	990
Other transfers:		
Plant replacement, construction and loan funds	<u>538</u>	<u>2,683</u>
Total expenditures	<u>\$39,757</u>	<u>\$43,020</u>

Source: Office of the Financial Vice President

CONTRACTS AND GRANTS
Revenues by Type and
by Source of Funding
(1969-74)

	<u>1969-70</u>	<u>1970-71</u>	<u>1971-72</u>	<u>1972-73</u>	<u>1973-74</u>
<u>Revenues</u>					
Sponsored research	\$1,956,087	\$3,044,364	\$3,070,765	\$2,988,059	\$2,885,288
Other programs sponsored	<u>3,274,320</u>	<u>2,612,487</u>	<u>3,037,526</u>	<u>3,175,695</u>	<u>3,651,800</u>
	<u>5,230,407</u>	<u>5,656,851</u>	<u>6,108,291</u>	<u>6,163,754</u>	<u>6,537,088</u>
<u>Sources of Funding</u>					
Federal gov't	4,828,672	5,078,349	5,061,657	5,484,719	5,542,035
State gov't	73,100	115,021	311,573	228,885	251,602
Local gov't	46,185	153,481	210,534	90,658	147,282
Non-government	<u>282,450</u>	<u>310,000</u>	<u>524,527</u>	<u>359,492</u>	<u>596,169</u>
TOTAL	<u>\$5,230,407</u>	<u>\$5,656,851</u>	<u>\$6,108,291</u>	<u>\$6,163,754</u>	<u>\$6,537,088</u>

Source: Office of Financial Vice President

PHYSICAL PLANT

PHYSICAL PLANT
Facilities Inventory

<u>Room Use Categories</u>	<u>Total Assignable Sq. Ft.</u>	<u>Instruction Program</u>	<u>Public Service</u>	<u>Academic Support</u>	<u>Student Services</u>	<u>Institutional Support</u>
Classroom facilities	106,957	106,957	-	-	-	-
Class laboratory	38,073	38,073	-	-	-	-
Special class laboratory	16,539	16,539	-	-	-	-
Individual study laboratory	2,097	2,097	-	-	-	-
Non-class laboratory	37,010	37,010	-	-	-	-
Office facilities	207,552	125,276	9,755	15,754	25,064	31,703
Study facilities	80,594	15,141	-	60,629	4,824	-
Special use facilities	129,369	2,934	-	-	126,435	-
General use facilities	158,357	13,799	-	2,879	136,139	5,540
Supporting facilities	58,266	11,883	-	705	34,167	11,031
Health care facilities	1,358	-	-	-	1,358	-
Residential facilities	<u>527,197</u>	<u>-</u>	<u>-</u>	<u>-</u>	<u>527,197</u>	<u>-</u>
Total facilities in use	1,363,369	369,709	9,755	79,967	855,184	48,274
Unclassified facilities	<u>4,666</u>					
Total assignable area	1,368,035					

Source: Office of Campus Planner

PHYSICAL PLANT
Building Acquisition

<u>Building</u>	<u>Purpose</u>	<u>Date Constructed or Acquired</u>
Gasson	Administration Building	1913
St. Mary's Hall	Jesuit Residence	1917
Philomatheia Hall	Development Office	1920
Devlin Hall	Science Building	1924
Bapst Library	Main Library	1928
Southwell Hall	Consumer Law Center	1937
Faber House	Jesuit Residence	1938
O'Connell Hall	Student Housing	1938
Alumni Hall	Alumni and Placement Offices	1948
Fulton Hall	School of Management	1948
Service Building	Maintenance Shop	1948
Lawrence	Public Relations	1949
Lyons Hall	Arts and Sciences Classrooms	1951
Campion Hall	School of Education	1955
St. Thomas More Hall	The Law School	1955
Claver	Student Housing	1956
Loyola	Student Housing	1956
Xavier	Student Housing	1956
Gonzaga Hall	Student Housing	1958
Kostka Hall	Student Housing	1958
McHugh Forum	Hockey Rink	1958
Roberts Center	Gymnasium	1958
Cheverus	Student Housing	1960
Cushing Hall	School of Nursing	1960
Fenwick	Student Housing	1960
Fitzpatrick	Student Housing	1960
McElroy Commons	Student Union	1961
Rahner House	Jesuit Residence	1962
Shaw House	Student Housing	1962
Carney Hall	Arts & Sciences Faculty Center	1962
Bea House	Jesuit Residence	1965
Roncalli House	Student Housing	1965
Welsh Hall	Student Housing	1965
Williams Hall	Student Housing	1965
Higgins Hall	Science Building	1966
Canisius House	Jesuit Residence	1966
Botolph House	Office of the President	1967
Murray House	Commuter Center	1967
McGuinn Hall	Social Sciences Building	1968
Hopkins House	Office of the Dean of Faculties	1968
210 Chestnut Hill Ave.	Student Apartments	1969
2051 Commonwealth Ave.	Student Apartments	1969
314 Hammond St.	Student Housing	1969
39-41 South Street	Student Apartments	1969
5 South Street	Student Apartments	1969
9 South Street	Student Apartments	1969

Building Acquisition
(cont.)

<u>Building</u>	<u>Purpose</u>	<u>Date Constructed or Acquired</u>
15 South Street	Student Apartments	1969
19 South Street	Student Apartments	1969
25 South Street	Student Apartments	1969
Haley House	Campus Ministry Facility	1969
Bellarmino	Environment Center	1969
Modulars	Student Apartments	1971
Town House Dormitories	Student Apartments	1971
Hovey Estate	Department of Fine Arts	1971
Athletic Complex		1972
Brock House	Offices	1972
Hillside Dormitories	Student Apartments	1973

Source: Office of Campus Planner

PHYSICAL PLANT
Building Acquisition
Newton Campus
(1974)

<u>Building</u>	<u>Purpose</u>
Barat House	Administrative
Stuart House	Law School
Putnam Center	Studio Art
Cushing House	Dormitory
Hardey House	Dormitory
Duchesne	Dormitory
Keyes	Dormitory/Infirmary
Kenny-Cottle Library	Library
Barry Science Pavilion	Classroom
St. Mary's Hall	Administrative
Quonset Hut	Gymnasium
Chapel of the Most Blessed Trinity	Chapel

Source: Office of Campus Planner

PHYSICAL PLANT

Classroom Use

<u>Building</u>	<u>Number of Classrooms</u>	<u>% Space Usage 9:00 am - 5:00 pm</u>
Campion	15	87%
Carney	25	89
Cushing	13	82
Devlin	2	79
Fulton	16	84
Gasson	12	47
Higgins	8	74
Lyons	13	71
McGuinn	16	67
St. Thomas More	6	50

Note: Average space usage is 76%.

Source: Office of the Registrar

STUDENTS

Freshman Applications and Enrollment

<u>Year</u>	<u>Applications</u> ^a	<u>Enrollment</u> ^b		
		<u>Men</u>	<u>Women</u>	<u>Total</u>
1964	5,258	1,309	309	1,618
1969	5,242	1,232	364	1,596
1970	6,605	1,402	685	2,087
1971	6,712	1,024	725	1,749
1972	7,286	1,253	976	2,229
1973	8,358	913	874	1,787
1974	8,377 ^c	1,144	1,008	2,152

Sources: ^aAdmissions Office

^bSecretary of the University

^cIncludes applicants to Newton College who maintained their applications to Boston College after the announced merger.

SAT Averages by Class

<u>Class</u>	<u>Verbal</u>	<u>Mathematical</u>
1964	521	522
1965	504	539
1966	535	544
1967	544	549
1968	559	574
1969	565	576
1970	556	570
1971	546	567
1972	556	578
1973	549	574
1974	533	554
1975	530	554
1976	528	552
1977	518	554
1978	515	548

Source: Admissions Office

Class of 1978
Geographic Distribution

Outside New England

Alabama	1	Missouri	2
California	8	New Jersey	181
Delaware	2	New York	299
Florida	15	North Carolina	2
Illinois	25	Ohio	21
Indiana	2	Pennsylvania	59
Iowa	1	Tennessee	1
Kentucky	1	Texas	2
Louisiana	1	Virginia	5
Maryland	37	Washington, D.C.	7
Michigan	14	Washington	5
Minnesota	2	West Virginia	1
Missouri	2	Wisconsin	<u>2</u>
			696

Massachusetts	1,140
Other New England	292
Other United States	696
International	<u>24</u>
Total	2,152

Source: Office of the Registrar

Undergraduate Transfer Students
by Year and Sex

<u>Year</u>	<u>Men</u>	<u>Women</u>	<u>Total</u>
1969	NA	NA	58
1970	60	36	96
1971	88	115	203
1972	177	283	460
1973	146	267	413
1974	251	300	551

NA = breakdown not available

Source: Admissions Office

Undergraduate Transfer Students
by Type of Previous Institution

	<u>2-year Public</u>	<u>2-year Private</u>	<u>4-year Public</u>	<u>4-year Private</u>	<u>Total</u>
1973-74	56	70	71	216	413
1974-75	77	77	82	315	551

Source: Admissions Office

Academic Year Enrollment
1969-70 through 1974-75

<u>Year</u>	<u>Undergraduate</u>			<u>Graduate/ Professional</u>	<u>Total</u>
	<u>Day</u>	<u>Evening</u>	<u>Total</u>		
1969-70	6,231	984	7,115	3,099	10,214
1970-71	6,663	1,076	7,739	3,217	10,956
1971-72	6,640	1,101	7,741	3,370	11,111
1972-73	7,313	1,173	8,486	3,301	11,787
1973-74	7,543	1,198	8,741	3,640	12,381
1974-75	8,024	1,194	9,218	3,531	12,749

Source: Secretary of the University

Academic Year Enrollment
Full Time Equivalent

<u>Year</u>	<u>Undergraduate</u>			<u>Graduate/ Professional</u>	<u>Total</u>
	<u>Day</u>	<u>Evening</u>	<u>Total</u>		
1969-70	6,170	480	6,650	2,324	8,974
1970-71	6,589	491	7,080	2,464	9,544
1971-72	6,611	638	7,249	2,545	9,794
1972-73	7,296	637	7,933	2,378	10,311
1973-74	7,518	578	8,096	2,550	10,646
1974-75	8,008	614	8,622	2,418	11,040

Source: Secretary of the University

Academic Year Undergraduate Enrollment
by School

<u>Year</u>	<u>A&S</u>	<u>SOM</u>	<u>Education</u>	<u>Nursing</u>	<u>Evening</u>	<u>Total</u>
1970	3,032	1,774	1,268	589	1,076	7,739
1971	3,145	1,641	1,284	570	1,101	7,741
1972	3,589	1,663	1,344	717	1,173	8,486
1973	3,864	1,657	1,266	756	1,198	8,741
1974	4,284	1,724	1,263	753	1,194	9,218

Source: Secretary of the University

Academic Year Graduate Enrollment
by School

<u>Year</u>	<u>A&S*</u>	<u>SOM</u>	<u>Social Work</u>	<u>Law</u>	<u>Total</u>
1970	2,019	351	206	641	3,217
1971	2,107	288	244	731	3,370
1972	2,048	317	228	708	3,301
1973	2,388	320	244	688	3,640
1974	2,245	319	257	710	3,531

*Includes Graduate Education and Nursing

Source: Secretary of the University

Academic Year Enrollment

By Sex

<u>Fall</u>	<u>Undergraduate</u>		<u>Graduate/ Professional</u>		<u>Total</u>	
	<u>Men</u>	<u>Women</u>	<u>Men</u>	<u>Women</u>	<u>Men</u>	<u>Women</u>
1967	5,191	1,784	1,856	898	7,047	2,682
1968	5,129	1,879	1,880	1,084	7,009	2,963
1969	5,205	1,910	1,974	1,125	7,179	3,035
1970	5,311	2,428	1,983	1,234	7,294	3,662
1971	5,019	2,722	2,029	1,341	7,048	4,063
1972	4,945	3,541	1,975	1,326	6,920	4,867
1973	4,700	4,041	2,022	1,618	6,722	5,659
1974	4,745	4,473	1,831	1,700	6,576	6,173

Source: Secretary of the University

Summer School Enrollment

<u>Fall</u>	<u>Regular Session</u>			<u>Workshops and Institutes</u>	
	<u>Undergraduate</u>	<u>Graduate/ Professional</u>	<u>Total</u>		<u>Total</u>
1967	1,270	1,113	2,383	870	3,253
1968	1,251	1,161	2,412	1,033	3,445
1969	1,028	1,592	2,620	1,451	4,071
1970	691	1,434	2,125	679	2,804
1971	676	1,149	1,825	508	2,333
1972	607	1,077	1,684	446	2,130
1973	622	1,155	1,777	623	2,400
1974	692	1,116	1,808	714	2,522

Note: Figures for 1973 and 1974 are from the Boston College Summer Session Annual Reports.

Source: Summer School Office

International Student Enrollment
1974-75

	<u>Men</u>	<u>Women</u>	<u>Total</u>		<u>Men</u>	<u>Women</u>	<u>Total</u>
Australia	1	0	1	Italy	3	0	3
Belgium	2	1	3	Jamaica	1	1	2
Bangladesh	1	0	1	Japan	7	3	10
Bahamas	0	1	1	Kenya	1	0	1
Bermuda	2	0	2	Korea	2	2	4
Brazil	1	3	4	Lebanon	1	0	1
Canada	8	8	16	Macao	0	1	1
Chile	1	0	1	Malaysia	1	0	1
Colombia	2	0	2	Mexico	2	0	2
Cyprus	1	0	1	Morocco	1	0	1
Dominican Republic	3	0	3	New Zealand	0	1	1
Ecuador	1	1	2	Nicaragua	0	1	1
El Salvador	1	0	1	Nigeria	2	0	2
England	1	1	2	Norway	1	0	1
Ethiopia	5	0	5	Panama	2	0	2
France	1	1	2	Peru	0	2	2
Germany	2	0	2	Phillipines	1	4	5
Ghana	2	0	2	Portugal	2	0	2
Greece	3	2	5	Somalia	1	0	1
Honduras	1	0	1	South Vietnam	2	0	2
Hong Kong	4	3	7	Spain	0	3	3
India	8	3	11	Taiwan	11	2	13
Iran	3	4	7	Thailand	6	1	7
Ireland	6	2	8	Turkey	1	0	1
Israel	0	2	2	Venezuela	4	0	4
				TOTAL	112	53	165*

*This figure does not include two currently enrolled students from the Soviet Union who have refugee visas. Students with permanent residency visas are also not included.

Source: Office of Student Activities

Degrees Conferred
Undergraduate by Major
1970-74

<u>School/Major</u>	<u>1970</u>	<u>1971</u>	<u>1972</u>	<u>1973</u>	<u>1974</u>
Arts & Sciences					
American Studies	-	1	2	-	-
Biology	65	54	71	60	112
Chemistry	22	14	18	12	18
Classics	7	6	8	5	2
Economics	96	42	61	46	72
English	169	155	211	128	152
Fine Arts	-	1	2	5	9
Geology	8	4	8	9	11
German	-	4	1	2	3
History	100	126	83	64	70
Liberal Arts	-	3	2	5	-
Linguistics	-	-	-	2	1
Mathematics	80	78	81	47	47
Philosophy	25	42	9	29	55
Physics	10	4	9	5	6
Political Science	54	49	67	59	126
Psychology	37	53	85	55	116
Romance Languages	27	19	23	17	8
Russian, Slavic	3	5	13	2	2
Sociology	18	38	34	32	79
Social Sciences	-	5	13	2	-
Speech Communication and Theater	10	17	13	12	12
Theology	1	1	2	7	7
Urban Studies	-	1	2	-	5
Total	<u>735</u>	<u>727</u>	<u>821</u>	<u>602</u>	<u>917</u>
Education					
General	3	39	-	-	11
Deaf/Blind	-	-	-	-	6
Elementary	85	104	105	96	85
Secondary	-	-	-	-	101
Special	<u>26</u>	<u>-</u>	<u>40</u>	<u>65</u>	<u>104</u>
Total	<u>114</u>	<u>143</u>	<u>145</u>	<u>161</u>	<u>308</u>

<u>School/Major</u>	<u>1970</u>	<u>1971</u>	<u>1972</u>	<u>1973</u>	<u>1974</u>
Management					
Accounting	128	107	126	71	109
Business - General	26	21	26	16	23
Business Management and Administration	46	51	85	48	33
Business Economics	-	28	41	44	33
Computer Science	-	-	-	17	8
Finance	88	71	42	86	70
Marketing	<u>94</u>	<u>117</u>	<u>110</u>	<u>56</u>	<u>91</u>
Total	<u>382</u>	<u>395</u>	<u>430</u>	<u>340</u>	<u>369</u>
Nursing					
Basic	156	163	142	143	97
R.N.	<u>-</u>	<u>-</u>	<u>-</u>	<u>-</u>	<u>67</u>
Total	<u>156</u>	<u>163</u>	<u>142</u>	<u>143</u>	<u>164</u>
TOTAL UNDERGRADUATE DEGREES CONFERRED	<u>1,387</u>	<u>1,428</u>	<u>1,539</u>	<u>1,246</u>	<u>1,759</u>

source: Office of the Registrar

Degrees Conferred
Graduate and Professional

<u>School</u>	<u>1968</u>	<u>1969</u>	<u>1970</u>	<u>1971</u>	<u>1972</u>	<u>1973</u>	<u>1974</u>
A&S							
Masters ^a 1st prof.	298	446	636	569	575	644	624 ^a
Doctorate ^b	19	28	55	56	52	60	83 ^b
SOM	75	69	165	122	102	78	92
Social Work	60	55	78	90	94	89	72
Law	146	166	138	169	206	247	249
Weston ^c	<u>32</u>	<u>20</u>	<u>31</u>	<u>16</u>	<u>20</u>	<u>1</u>	<u>-^c</u>
Total	<u>630</u>	<u>794</u>	<u>1,103</u>	<u>1,022</u>	<u>1,049</u>	<u>1,119</u>	<u>1,120</u>

^aOf 624 MA's, 337 were from Education and 62 from Nursing.

^bOf 83 PhD's, 30 were from Education.

^cNo longer included in statistics.

Source: Secretary of the University :

FINANCIAL AID

Undergraduate
1970-75

Dollars

<u>Types of Aid</u>	<u>Amount</u>				<u>Estimated 1974-75</u>
	<u>1970-71</u>	<u>1971-72</u>	<u>1972-73</u>	<u>1973-74</u>	
University scholarships and grants	\$1,247,094	\$1,189,754	\$1,136,529	\$1,194,115	\$1,300,000
State scholarship*	601,875	895,808	827,320	868,475	800,000
Educational Opportunity Grant	536,500	548,170	524,720	540,478	730,000
Work-Study	NA	549,706	820,172	1,179,104	900,000
National Direct Student Loan	NA	<u>1,341,908</u>	<u>1,653,676</u>	<u>1,602,920</u>	<u>1,750,000</u>
Subtotal		<u>4,525,346</u>	<u>4,962,417</u>	<u>5,385,092</u>	<u>5,480,000</u>
Other**	NA	<u>995,580</u>	<u>1,140,983</u>	<u>1,135,556</u>	<u>1,185,000</u>
Total		<u>\$5,520,926</u>	<u>\$6,103,400</u>	<u>\$6,520,648</u>	<u>\$6,665,000</u>

*State scholarship funds to students from Massachusetts, Connecticut, New Jersey, Pennsylvania, Rhode Island, and Vermont.

**Other includes Black Talent and Athletic programs.

Source: Director of Financial Aid

FINANCIAL AID

Undergraduate
(1970-71)

Number of Students

	Number of Students				
	<u>1970-71</u>	<u>1971-72</u>	<u>1972-73</u>	<u>1973-74</u>	<u>1974-75</u>
University scholarships and grants	1,184	1,068	1,262	1,542	1,540
State scholarship*	762	1,069	960	1,016	875
Educational Opportunity Grant	643	623	564	502	650
Work-Study	683	627	898	1,019	770
National Direct Student Loan	<u>1,574</u>	<u>1,445</u>	<u>1,629</u>	<u>1,638</u>	<u>1,760</u>
Subtotal	<u>4,846</u>	<u>4,832</u>	<u>5,313</u>	<u>5,817</u>	<u>5,595</u>
Other**	<u>NA</u>	<u>344</u>	<u>354</u>	<u>386</u>	<u>380</u>
Total	<u> </u>	<u>5,176</u>	<u>5,667</u>	<u>6,203</u>	<u>5,975</u>

*State scholarship funds to students from Massachusetts, Connecticut, New Jersey, Pennsylvania, Rhode Island, and Vermont.

**Other includes Black Talent and athletic programs.

Source: Director of Financial Aid

ATHLETICS

Sports at Boston College

Men's Varsity

Football
Basketball
Hockey
Baseball
Track
Soccer
Lacrosse
Golf
Tennis
Wrestling
Skiing
Sailing

Women's Varsity

Volleyball
Basketball
Field Hockey
Swimming
Tennis
Fencing
Golf

Men's Intramurals

Flag Football
Tennis Doubles
Tennis Singles
Racketball Singles
Racketball Doubles
Handball
Ice Hockey
Volleyball
Cross Country Meet
Basketball
Squash
Water Basketball

Women's Intramurals

Tennis Singles
Paddleball
Basketball

Coed Intramurals

Ping Pong
Volleyball
Swimming
Track

Lessons

Tennis
Fencing
Figure Skating
Gymnastics
Modern Dance
Exercise
Golf
Squash
Swimming

Clubs

Men's Swimming
Men's Water Polo
Women's Water Polo

Source: Director of Sports Information

ATHLETICS
Varsity Sports Records
1972-74

<u>MEN'S RECORDS</u>	<u>1972</u>	<u>1973</u>	<u>1974</u>
Football	4-7	7-4	8-3
Basketball	13-13	11-14	21-9
Hockey	14-16	22-7 (T-1)	16-12
Wrestling	1-4 (T-1)	2-6	8-8
Soccer	6-8	3-9 (T-1)	6-8 (T-2)
Lacrosse	7-4	10-1	8-2
Tennis	8-4	10-3	10-2
Baseball	9-13 (T-1)	5-16	15-9 (T-1)
Swimming	not avail.	4-6	8-0

<u>WOMEN'S RECORDS</u>	<u>1972</u>	<u>1973</u>	<u>1974</u>
Tennis	NOT AVAILABLE	3-3	4-2
Basketball		4-6	9-2
Volleyball		0-8	2-8
Swimming		8-3	6-2
Field Hockey		2-2	4-0

SOURCE: Director of Sports Information.

BOSTON COLLEGE HEALTH SERVICE

<u>Number of Students Served</u>					
	<u>1970-71</u>	<u>1971-72</u>	<u>1972-73</u>	<u>1973-74</u>	<u>1974-75</u>
<u>Clinic</u>					
Total visits to M.D.	7,609	10,551	16,490	18,299	19,488
Total visits to R.N.	<u>5,923</u>	<u>6,092</u>	<u>9,645</u>	<u>7,763</u>	<u>9,879</u>
Total	<u>13,532</u>	<u>16,643</u>	<u>26,135</u>	<u>26,062</u>	<u>29,367</u>
<u>Infirmary</u>					
Total admissions*	385	463	567	485	637
Men		(265)	(335)	(255)	(266)
Women		(128)	(232)	(230)	(411)
Total patient days	1,417	1,280	1,370	1,130	1,329
Average daily census	6.2	5.4	5.5	5.4	6.1
Average length of stay (days)	3.7	2.7	2.3	2.3	2.1
Number of days in full operation	229	234	237	209	216

*Number of admissions includes total visits to M.D.

Source: Counseling Office

LIBRARIES

LIBRARIES

Holdings by Individual Libraries

1975

<u>Library</u>	<u>Books</u>	<u>Periodicals</u>	<u>Microfilm</u>
Bapst	527,335	2,062	158,287
Law	110,222	635	58,891
SOM	66,120	736	32,422
Nursing	28,506	565	1,160
Science	50,897	502	7,560
Weston Observatory	8,083	56	14
Social Work	15,264	229	-
Newton College	<u>95,000</u>	<u>-</u>	<u>-</u>
Total	<u>901,427*</u>	<u>4,785</u>	<u>258,334</u>

*Total reflects deduction of holdings of Weston Theology and Shadowbrook, no longer part of Boston College.

Source: Director of Libraries

LIBRARIES

Expenditures for Books
1975

<u>Library</u>	<u>1971-72</u>	<u>1972-73</u>	<u>1973-74</u>	<u>1974-75</u>
Bapst	\$318,000	\$354,650	\$324,884	\$315,246
Law	60,000	66,000	74,000	85,000
SOM	19,700	21,670	21,110	28,850
Nursing	9,300	10,230	9,300	19,900
Science	38,500	42,500	50,390	58,000
Social Work	<u>4,500</u>	<u>4,950</u>	<u>4,500</u>	<u>5,500</u>
Total	<u>\$450,000</u>	<u>\$500,000</u>	<u>\$484,184</u>	<u>\$512,496</u>

Source: Director of Libraries

LIBRARIES

Volume Acquisitions (all libraries)	
<u>Year</u>	<u>Number</u>
1968-69	33,963
1969-70	34,206
1970-71	36,262
1971-72	34,758
1972-73	40,835
1973-74	29,945
1974-75	<u>25,770</u>
Total	<u>235,739</u>

Circulation Statistics					
<u>Year</u>	<u>Student</u>	<u>Faculty</u>	<u>Inter- library loans</u>	<u>Reserve</u>	<u>Total</u>
1970-71	130,148	13,123	1,516	10,237	155,024
1971-72	132,368	14,307	1,520	17,848	166,043
1972-73	141,230	10,199	951	19,688	172,068
1973-74	171,321	11,052	2,451	38,137	222,961
1974-75	114,688	10,030	2,576	36,976	164,270

Source: Director of Libraries

ALUMNI

ALUMNI

Geographic Analysis by State

Alabama	42	New Hampshire	944
Alaska	21	New Jersey	1,472
Arizona	86	New Mexico	40
Arkansas	11	New York	3,450
California	1,115	North Carolina	137
Colorado	124	North Dakota	10
Connecticut	2,487	Ohio	503
Delaware	94	Oklahoma	33
District of Columbia	296	Oregon	44
Florida	487	Pennsylvania	689
Georgia	147	Puerto Rico	54
Hawaii	41	Rhode Island	1,135
Idaho	7	South Carolina	41
Illinois	469	South Dakota	13
Indiana	127	Tennessee	63
Iowa	36	Texas	216
Kansas	51	Utah	17
Kentucky	79	Vermont	225
Louisiana	67	Virginia	678
Maine	604	Virgin Islands	7
Maryland	870	Washington	122
Massachusetts	32,186	West Virginia	23
Michigan	300	Wisconsin	147
Minnesota	109	Wyoming	6
Mississippi	17	Foreign nations	827
Missouri	144	Inactive	1,210
Montana	14	Lost	3,267
Nebraska	26		
Nevada	13		

Source: Boston College Alumni Association

ALUMNI

New England

Metropolitan Boston	
Postal areas 01701-02009	7,366
02101-02215	<u>16,534</u>
	23,900
Massachusetts outside Metropolitan Boston	<u>8,286</u>
Total Massachusetts	32,186
New England	
Connecticut	2,487
Maine	604
New Hampshire	944
Rhode Island	1,135
Vermont	<u>225</u>
Total New England outside Mass.	5,395
Massachusetts	<u>32,186</u>
Total New England	37,581
Total outside New England	<u>17,862</u>
<u>TOTAL ALUMNI</u>	<u>55,443</u>

Source: Boston College Alumni Association

